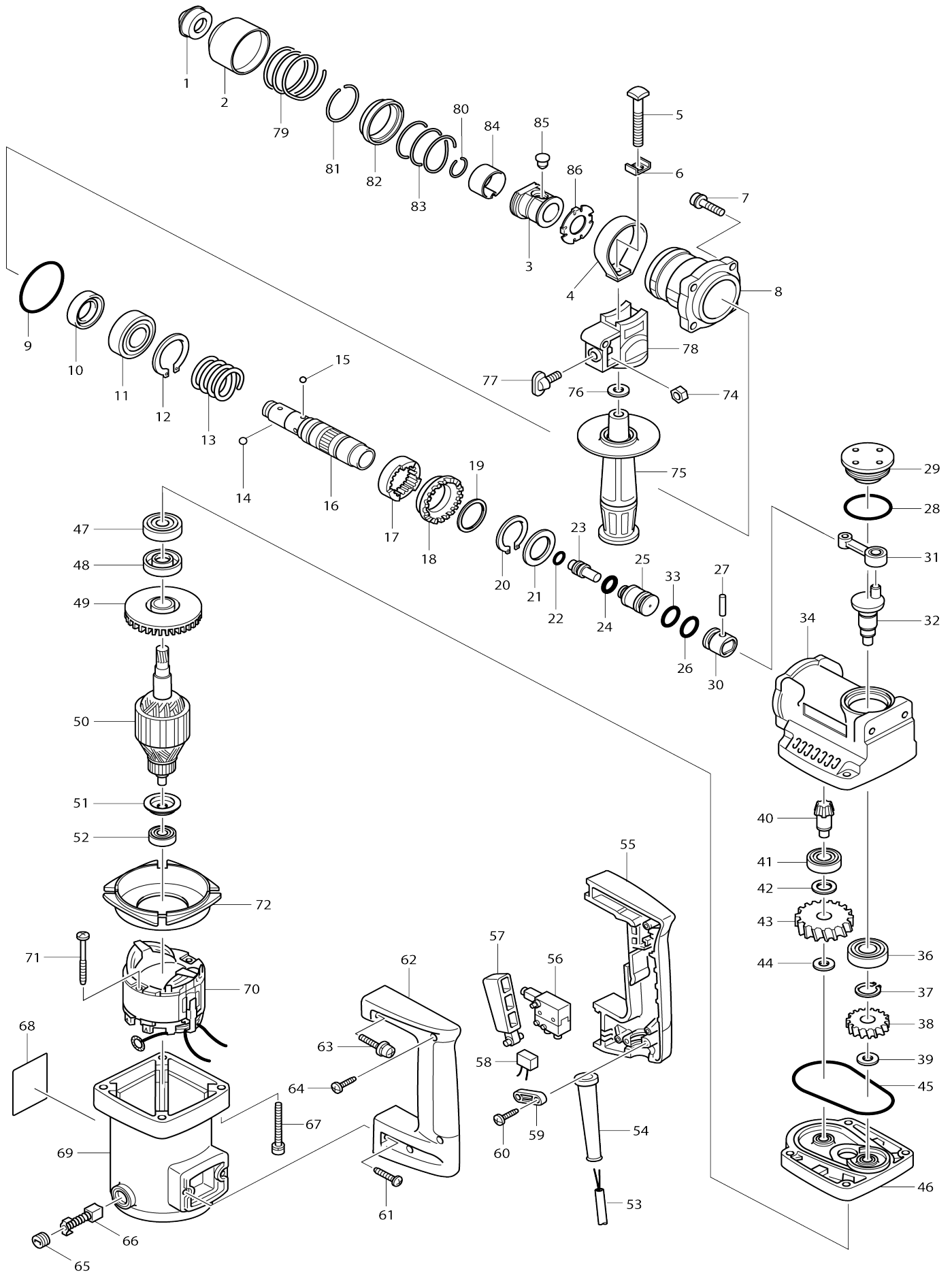


Model No.HR2010 ROTARY HAMMER 20MM



Model No.HR2010 ROTARY HAMMER 20MM

Item No.	Parts No.	Description	Interchangability	Q'ty	New/Old	Note1	Note2
001-1	286251-1	CAP 37		1	*		
001-2	286248-0	CAP 31	X	1	*		
001-3	286265-0	CAP 31	X	1			
002	415076-8	CHANGE RING COVER		1	*		
002-1	416410-5	CHUCK COVER	X	1			
003	152470-0	CHANGE RING COMPLETE		1	*		
C10	232122-0	LEAF SPRING		1	*		
C20	258022-6	SPRING PIN 4-6		1	*		
003-1	323820-8	CHUCK RING	X	1			
004	344205-5	BELT		1			
005	266092-1	SQUARE BOLT M8X60		1			
006	267719-6	SQUARE WASHER 9		1			
007	922231-0	HEX. SOCKET HEAD BOLT M5X20		4			
008	316781-9	BARREL		1	*		
008-1	317102-8	BARREL	X	1			
009	213604-1	O RING 50		1			
010	213313-2	OIL SEAL 20		1			
011	211304-7	BALL BEARING 6004		1			
012	961110-7	RETAINING RING S-30		1			
013	233145-1	COMPRESSION SPRING 31		1			
014	216009-4	STEEL BALL 7.1		1	*		
014-1	216022-2	STEEL BALL 7.0	O	1			
015	216011-7	STEEL BALL 5.6		4			
016	322843-3	TOOL HOLDER		1	*		
016-1	323821-6	TOOL HOLDER	X	1			
017-1	223112-4	CLUTCH CAM		1			
018-1	226732-3	SPIRAL BEVEL GEAR 33		1			
019	267127-1	FLAT WASHER 26		1			
020	961106-8	RETAINING RING S-26		1			
021	267148-3	FLAT WASHER 23		1			
022	213063-9	O RING 10		1			
023	322739-8	IMPACT BOLT		1	*		
023-1	323818-5	IMPACT BOLT	X	1			
024	213117-2	O RING 11		1			
025	322864-5	STRIKER		1			
026	213172-4	O RING 15		1			
027	256123-4	PIN 5		1			
028	213510-0	O RING 36		1			
029	415902-1	CRANK CAP		1			
030	316819-0	PISTON		1			
031	152504-9	CONNECTING ROD COMPLETE		1			
C10	212043-2	NEEDLE BEARING 810		1			
032	322842-5	CRANK SHAFT		1			
033	213172-4	O RING 15		1			
034	159847-0	CRANK HOUSING COMPLETE		1			
036	211204-1	BALL BEARING 6002		1			
037	961055-9	RETAINING RING S-15		1			

038	226458-7	HELICAL GEAR 29		1		
039	253865-1	FLAT WASHER 8		1		
040	226731-5	SPIRAL BEVEL GEAR 9		1		
041	211104-5	BALL BEARING 6001		1		
042	253744-3	FLAT WASHER 12		1		
043	226459-5	HELICAL GEAR 43		1		
044	253865-1	FLAT WASHER 8		1		
045	213760-7	O RING 78		1		
046	159846-2	GEAR HOUSING COMPLETE		1		
047	211064-1	BALL BEARING 6000		1		
048	213112-2	OIL SEAL 12		1		
049	241879-2	FAN 60		1		
050C_	516269-1	ARMATURE ASS'Y 240V		1		
D10		INC. 49,51,52				
051	681625-5	INSULATION WASHER		1		
052	211033-2	BALL BEARING 608LB		1		
053F_	665890-4	POWER SUPPLY CORD 1.0-2-4.0		1		
054	682505-8	CORD GUARD 10-90		1	*	
054-1	682568-4	CORD GUARD 10	<	1		
055	182816-6	HANDLE SET		1		
D10		INC. 62				
056A_	651919-2	SWITCH SGE106CV-1P		1		
057	415903-9	SWITCH LEVER		1		
058B_	645253-0	NOISE SUPPRESSOR		1		
059A_	687063-9	CORD CLAMP		1	*	
059A1	687052-4	STRAIN RELIEF	X	1		
060	265995-6	TAPPING SCREW 4X18		2		
061	266041-8	TAPPING SCREW 5X25		2		
062	182816-6	HANDLE SET		1		
D10		INC. 55				
063	911243-8	PAN HEAD SCREW M5X25		2		
064	265995-6	TAPPING SCREW 4X18		3		
065	643600-9	BRUSH HOLDER CAP 6-10		2		
066	181038-5	A.C. CARBON BRUSH CB-105		1		
067	922910-0	HEX. SOCKET HEAD BOLT M5X45		4		
068	858055-7	NAME PLATE HR2010		1		
069	159889-4	MOTOR HOUSING COMPLETE		1		
C20	643603-3	BRUSH HOLDER 6-10		2		
070C_	594254-4	FIELD ASS'Y 240V		1		
C10	654019-7	RING TERMINAL		2		
C20	654501-6	CONNECTOR P-1.25		2		
071	266046-8	TAPPING SCREW 5X50		2		
072	415904-7	BAFFLE PLATE		1		
074	931202-6	HEX. NUT M5		1		
075	152521-9	GRIP 36 COMPLETE		1		
076	253865-1	FLAT WASHER 8		1		
077	265720-5	THUMB SCREW M5X14		1		
078	415658-6	GRIP BASE		1		
079	233203-3	COMPRESSION SPRING 38		1		
080	231979-6	RING SPRING 17		1		
081	231936-4	RING SPRING 30.5		1		
082	323819-3	SPRING GUIDE		1		

083	233234-2	COMPRESSION SPRING 35		1			
084	232190-3	LEAF SPRING 26		1	*		
084-1	232190-3	LEAF SPRING 26	O	1			
085	256447-8	PIN 8		1			
086	344690-2	GUIDE WASHER		1			
A01	321144-6	DEPTH GAUGE		1			
A02	824464-2	PLASTIC CARRYING CASE		1			
C10	186347-7	SLIDE LATCH SET		1	*		
C11	417059-4	LATCH	X	2			
A03	421342-3	DUST CUP 5		1			

Please state Parts No. when your order.

Print Date 01/29/2024