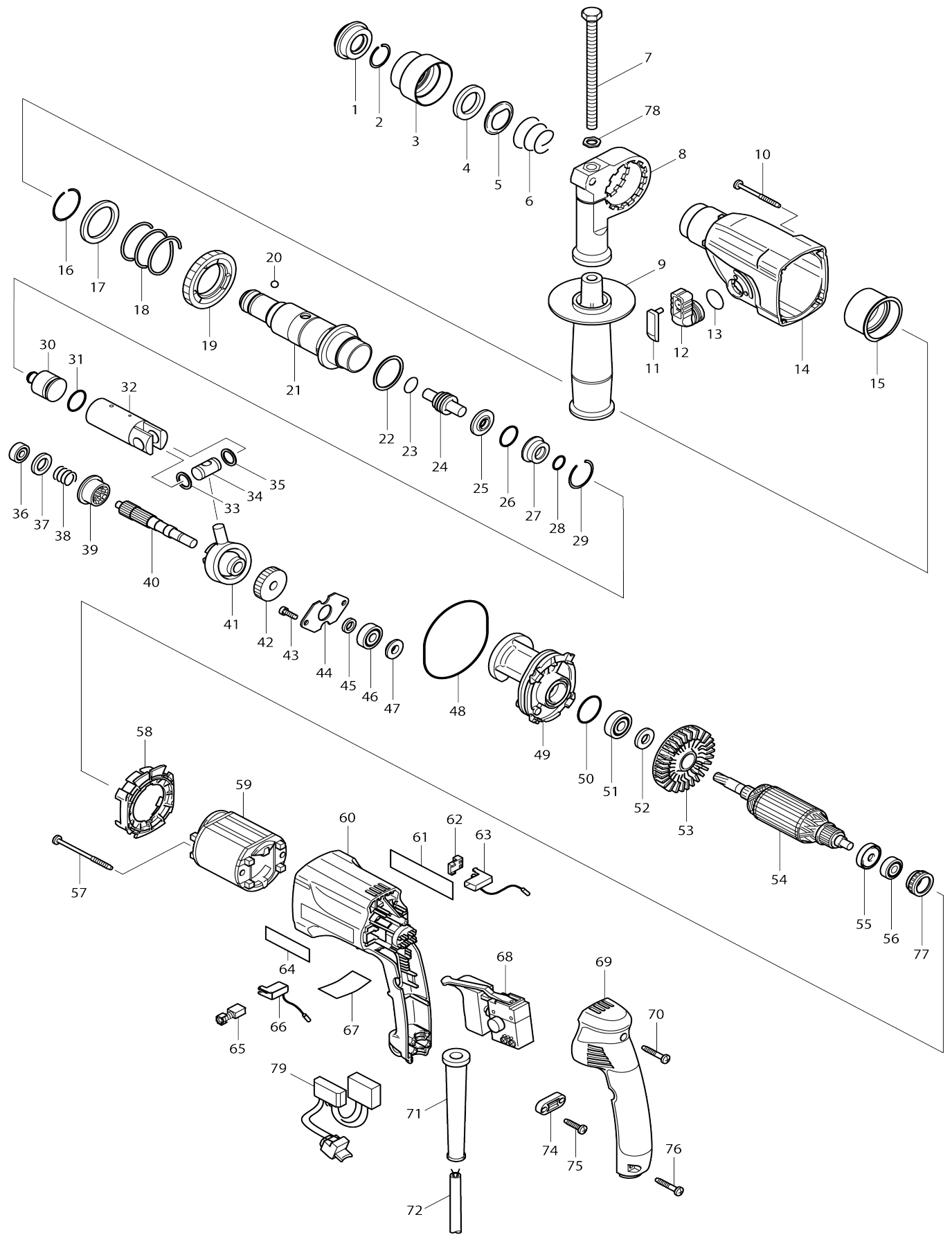


# Model No.HR2440F 24MM ROTARY HAMMER



Model No.HR2440F 24MM ROTARY HAMMER

Item No.	Parts No.	Description	Interchangability	Q'ty	New/Old	Note1	Note2
001	286263-4	CAP 35		1			
002	233915-8	RING SPRING 19		1	*		
002-1	233940-9	RING SPRING 19	O	1			
003	417629-9	CHUCK COVER		1			
004	257241-1	RING 21		1			
005	345187-4	GUIDE WASHER		1			
006	233916-6	CONICAL COMP. SPRING 21-29		1			
007	921923-8	HEX. BOLT M8X120		1			
008	417630-4	GRIP BASE		1			
009	134943-5	GRIP 36 ASS'Y		1	*		
C10	152521-9	GRIP 36 COMPLETE		1	*		
D10		INC. 7,8,78					
009-1	135302-6	GRIP 36 ASS'Y	O	1			
C10	153503-4	GRIP 36 COMPLETE		1			
D10		INC. 7,8,78					
010	266069-6	TAPPING SCREW 4X45		4	*		
010-1	266425-0	TAPPING SCREW 4X45	O	4			
011	417628-1	CAP		1			
012	153289-0	CHANGE LEVER COMPLETE		1	*		
012-1	184678-8	CHANGE LEVER ASS'Y	<	1			
C10	153289-0	CHANGE LEVER COMPLETE		1			
D10		INC. 11,39					
013	213278-8	O RING 17		1			
014	183442-4	GEAR HOUSING SET		1			
C10	213535-4	OIL SEAL 25		1			
D10		INC. 15					
015	153290-5	NEEDLE BEARING COMPLETE		1			
016	233918-2	RING SPRING 28		1			
017	267228-5	WASHER 30		1			
018	233328-3	COMPRESSION SPRING 31		1			
019	227019-6	SPUR GEAR 51		1			
020	216022-2	STEEL BALL 7.0		1			
021	153288-2	TOOL HOLDER COMPLETE		1			
022	267229-3	FLAT WASHER 28		1			
023	213128-7	O RING 12		1			
024	324278-4	IMPACT BOLT		1			
025	324218-2	RING 9		1			
026	213232-2	O RING 15		1			
027	324216-6	O RING CASE		1			
028	213073-6	O RING 9		1			
029	233917-4	RING SPRING 28		1			
030	324214-0	STRIKER		1			
031	213227-5	O RING 16		1			
032	317517-9	PISTON CYLINDER		1			
033	267104-3	FLAT WASHER 12		1			
034	324215-8	PISTON JOINT		1			
035	267104-3	FLAT WASHER 12		1			

036	211012-0	BALL BEARING 606ZZ		1	*		
036-1	210028-2	BALL BEARING 606ZZ	O	1			
037	253744-3	FLAT WASHER 12		1			
038	233347-9	COMPRESSION SPRING 12		1			
039	324152-6	CLUTCH CAM		1	*		
039-1	324469-7	CLUTCH CAM	<	1			
040	227029-3	SPUR GEAR 10		1			
041	219014-0	SWASH BEARING 10		1			
042	226550-9	HELICAL GEAR 26		1			
043	266273-7	HEX. SOCKET HEAD BOLT M4X12		2			
044	345179-3	BEARING RETAINER		1			
045	267234-0	FLAT WASHER 8		1			
046	211032-4	BALL BEARING 608ZZ		1	*		
046-1	210029-0	BALL BEARING 608ZZ	O	1			
047	324212-4	RING 8		1			
048	213725-9	O RING 68		1			
049	153287-4	INNER HOUSING COMPLETE		1	*		
049-1	153611-1	INNER HOUSING COMPLETE	<	1	*		
049-2	153686-0	INNER HOUSING COMPLETE	<	1			
050	213380-7	O RING 24		1			
051	210060-6	BALL BEARING 609LLU		1			
052	267231-6	FLAT WASHER 9		1			
053	240047-4	FAN 60		1	*		
053-1	240084-8	FAN 60	O	1			
054	517378-9	ARMATURE ASS'Y 220-240V		1	*		
D10		INC. 51,52,53,55,56					
054-1	515668-4	ARMATURE ASS'Y 220-240V	O	1			
D10		INC. 51,52,53,55,56					
055	681636-0	INSULATION WASHER		1			
056	211021-9	BALL BEARING 607LLB		1			
057	266052-3	TAPPING SCREW 4X60		2	*		
057-1	266334-3	TAPPING SCREW 4X60	O	2			
058	417631-2	BAFFLE PLATE		1	*		
058-1	419201-3	BAFFLE PLATE	O	1			
059	633488-5	FIELD 220-240V		1			
060	183495-3	MOTER HOUSING		1	*		
D10		INC. 64					
060-1	417973-4	MOTOR HOUSING	O	1			
061	850093-5	NAME PLATE HR2440F		1			
062	689111-0	SPACER		2			
063	643988-7	BRUSH HOLDER		1			
064	819063-3	MAKITA LABEL		1	*		
065	191962-4	CARBON BRUSH CB-419		1	*		
065-1	195015-1	CARBON BRUSH SET CB-419	O	1			
066	643989-5	BRUSH HOLDER		1			
067	815943-1	HR2440F SERIAL NO. LABEL		1	*		
067-1	815968-5	HR2440F SERIAL NUMBER LABEL	X	1			
068	650508-0	SWITCH TG813TLB-1		1			
069	153284-0	HANDLE COVER COMPLETE		1			
C10	263002-9	RUBBER PIN 4		2			
070	265999-8	TAPPING SCREW 4X25		1	*		
070-1	266374-1	TAPPING SCREW 4X25	O	1			

071	682566-8	CORD GUARD 10		1		
072	665890-4	POWER SUPPLY CORD 1.0-2-4.0		1		
074	687052-4	STRAIN RELIEF		1	*	
074-1	687124-5	STRAIN RELIEF	O	1		
075	265995-6	TAPPING SCREW 4X18		2	*	
075-1	266326-2	TAPPING SCREW 4X18	O	2		
076	265999-8	TAPPING SCREW 4X25		2	*	
076-1	266374-1	TAPPING SCREW 4X25	O	2		
077	421494-0	RUBBER RING 19		1		
078	345280-4	HEX. WASHER		1		
079	631471-6	LIGHT CIRCUIT		1		
080	267271-4	FLAT WASHER 9		1		
081	345362-2	STOPPER PLATE		1	*	
081-1	345519-5	STOPPER PLATE	<	1		
082	233388-5	COMPRESSION SPRING 5		1		
083	961011-9	STOP RING E-4		1		
A01	324219-0	DEPTH GAUGE		1		
A02	824650-5	PLASTIC CARRYING CASE		1	*	
C10	417724-5	LATCH		2	*	
C20	819144-3	MAKITA LOGO LABEL		1	*	
A02-1	821896-4	PLASTIC CASE	O	1		
C10	417724-5	LATCH		2		
C20	819144-3	MAKITA LOGO LABEL		1		

Please state Parts No. when your order.

Print Date 01/29/2024