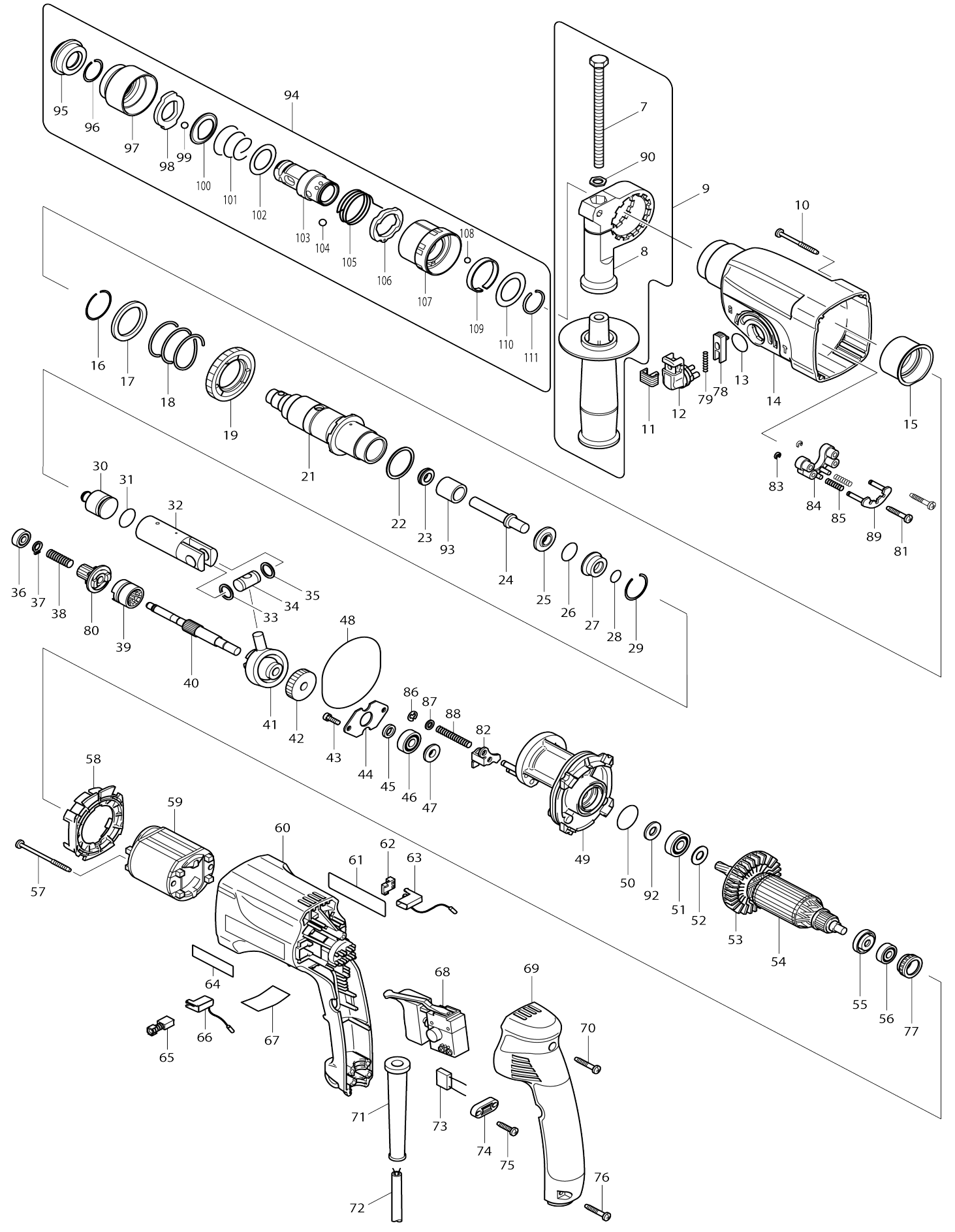


Model No.HR2450T ROTARY HAMMER 24MM



Model No.HR2450T ROTARY HAMMER 24MM

Item No.	Parts No.	Description	Interchangability	Q'ty	New/Old	Note1	Note2
F01	199140-0	GUIDE RAIL 1000 SET		1			
F02	199141-8	GUIDE RAIL 1500 SET		1			
F03	194368-5	GUIDE RAIL 1400 SET		1			
F04	194925-9	GUIDE RAIL 1900 SET		1			
F05	194367-7	GUIDE RAIL 3000 SET		1			
F06	194416-0	SHEET 10000 SET		1			
F07	194417-8	RUBBER SHEET 10000 SET		1			
F08	194418-6	POSITION SHEET 1400 SET		1			
F09	194910-2	POSITION SHEET 1900 SET		1			
007	921923-8	HEX. BOLT M8X120		1			
008	417630-4	GRIP BASE		1			
009	134943-5	GRIP 36 ASS'Y		1	*		
C10	152521-9	GRIP 36 COMPLETE		1	*		
D10		INC. 7,8,90					
009-1	135302-6	GRIP 36 ASS'Y	O	1			
C10	153503-4	GRIP 36 COMPLETE		1			
D10		INC. 7,8,90					
010	266069-6	TAPPING SCREW 4X45		4	*		
010-1	266425-0	TAPPING SCREW 4X45	O	4			
011	417794-4	CAP		1			
012	162229-7	CHANGE LEVER COMPLETE		1			
013	213278-8	O RING 17		1			
014	183441-6	GEAR HOUSING SET		1			
D10		INC. 15					
015	153290-5	NEEDLE BEARING COMPLETE		1			
016	233929-7	RING SPRING 29		1			
017	267782-9	WASHER 31		1			
018	233401-9	COMPRESSION SPRING 32		1			
019	227109-5	SPUR GEAR 51		1			
021	153696-7	TOOL HOLDER GUIDE COMPLETE		1			
022	267229-3	FLAT WASHER 28		1			
023	213074-4	X RING 9		1			
024	324400-3	IMPACT BOLT		1			
025	324402-9	RING 10		1			
026	213232-2	O RING 15		1			
027	324216-6	O RING CASE		1			
028	213073-6	O RING 9		1			
029	233917-4	RING SPRING 28		1			
030	324214-0	STRIKER		1			
031	213227-5	O RING 16		1			
032	331632-5	PISTON CYLINDER		1			
033	267104-3	FLAT WASHER 12		1			
034	324215-8	PISTON JOINT		1			
035	267104-3	FLAT WASHER 12		1			
036	211012-0	BALL BEARING 606ZZ		1	*		
036-1	210028-2	BALL BEARING 606ZZ	O	1			
037	961003-8	RETAINING RING S-7		1			

038	233343-7	COMPRESSION SPRING 7		1			
039	331634-1	CLUTCH CAM		1	*		
039-1	331993-3	CLUTCH CAM	<	1			
040	324248-3	CAM SHAFT		1			
041	219014-0	SWASH BEARING 10		1			
042	226550-9	HELICAL GEAR 26		1			
043	266273-7	HEX. SOCKET HEAD BOLT M4X12		2			
044	345179-3	BEARING RETAINER		1			
045	267234-0	FLAT WASHER 8		1			
046	211032-4	BALL BEARING 608ZZ		1	*		
046-1	210029-0	BALL BEARING 608ZZ	O	1			
047	324212-4	RING 8		1			
048	213725-9	O RING 68		1			
049	153610-3	INNER HOUSING COMPLETE		1	*		
049-1	153687-8	INNER HOUSING COMPLETE	<	1			
050	213380-7	O RING 24		1			
051	210060-6	BALL BEARING 609LLU		1			
052	267231-6	FLAT WASHER 9		1			
053	240047-4	FAN 60		1	*		
053-1	240084-8	FAN 60	O	1			
054	517378-9	ARMATURE ASS'Y 220-240V		1	*		
D10		INC. 51-53,55,56					
054-1	515668-4	ARMATURE ASS'Y 220-240V	O	1			
D10		INC. 51-53,55,56					
055	681636-0	INSULATION WASHER		1			
056	211021-9	BALL BEARING 607LLB		1			
057	266052-3	TAPPING SCREW 4X60		2	*		
057-1	266334-3	TAPPING SCREW 4X60	O	2			
058	417631-2	BAFFLE PLATE		1	*		
058-1	419201-3	BAFFLE PLATE	O	1			
059	633488-5	FIELD 220-240V		1			
060	183409-2	MOTOR HOUSING		1	*		
D10		INC. 64					
060-1	183951-3	MOTOR HOUSING SET	O	1	*		
D10		INC. 64					
060-2	418084-8	MOTOR HOUSING	O	1			
061	850817-9	NAME PLATE HR2450T		1			
062	689111-0	SPACER		2			
063	643988-7	BRUSH HOLDER		1			
064	819063-3	MAKITA LABEL		1	*		
065	191962-4	CARBON BRUSH CB-419		1	*		
065-1	195015-1	CARBON BRUSH SET CB-419	O	1			
066	643989-5	BRUSH HOLDER		1			
067	815953-8	HR2450T SERIAL NO. LABEL		1	*		
067-1	815985-5	HR2450T SERIAL NUMBER LABEL	X	1			
068	650508-0	SWITCH TG813TLB-1		1			
069	153284-0	HANDLE COVER COMPLETE		1			
C10	263002-9	RUBBER PIN 4		2			
070	265999-8	TAPPING SCREW 4X25		1	*		
070-1	266374-1	TAPPING SCREW 4X25	O	1			
071	682566-8	CORD GUARD 10		1			

072	665890-4	POWER SUPPLY CORD 1.0-2-4.0		1		
073	645253-0	NOISE SUPPRESSOR		1		
074	687052-4	STRAIN RELIEF		1	*	
074-1	687124-5	STRAIN RELIEF	O	1		
075	265995-6	TAPPING SCREW 4X18		2	*	
075-1	266326-2	TAPPING SCREW 4X18	O	2		
076	265999-8	TAPPING SCREW 4X25		2	*	
076-1	266374-1	TAPPING SCREW 4X25	O	2		
077	421494-0	RUBBER RING 19		1		
078	417795-2	LOCK BUTTON		1		
079	233341-1	COMPRESSION SPRING 3		1		
080	226399-7	SPUR GEAR 10		1		
081	265999-8	TAPPING SCREW 4X25		2	*	
081-1	266374-1	TAPPING SCREW 4X25	O	2		
082	345220-2	CHANGE PLATE		1	*	
082-1	345363-0	CHANGE PLATE	S	1		
083	961017-7	STOP RING E-3		2		
084	417796-0	GUIDE BASE		1		
085	233344-5	COMPRESSION SPRING 4		2		
086	961011-9	STOP RING E-4		1		
087	941102-2	FLAT WASHER 5		1		
088	233342-9	COMPRESSION SPRING 6		1		
089	163430-7	LOCK PLATE COMPLETE		1		
090	345280-4	HEX. WASHER		1		
092	267271-4	FLAT WASHER 9		1		
093	324401-1	SLEEVE 9		1		
094	193886-0	QUICK CHANGE CHUCK		1	*	
D10		INC. 95-111				
094-1	194080-7	TOOL HOLDER SET	O	1		
D10		INC. 95-111				
095	286263-4	CAP 35		1		
096	233915-8	RING SPRING 19		1	*	
096-1	233940-9	RING SPRING 19	O	1		
097	418217-5	CHUCK COVER		1		
098	345333-9	STOPPER		1		
099	216022-2	STEEL BALL 7.0		1		
100	345187-4	GUIDE WASHER		1		
101	233916-6	CONICAL COMP. SPRING 21-29		1		
102	267279-8	FLAT WASHER 21		1		
103	324355-2	TOOL HOLDER		1		
104	216013-3	STEEL BALL 6		2		
105	231669-1	TORSION SPRING 31		1		
106	345334-7	CHANGE RING		1		
107	418218-3	CHANGE COVER		1		
108	216018-3	STEEL BALL 5.0		1		
109	345335-5	LEAF SPRING		1		
110	267270-6	FLAT WASHER 24		1		
111	233924-7	RING SPRING 21		1		
A01	324219-0	DEPTH GAUGE		1		
A02	824650-5	PLASTIC CARRYING CASE		1	*	
C10	417724-5	LATCH		2	*	
C20	819144-3	MAKITA LOGO LABEL		1	*	

A02-1	824695-3	PLASTIC CARRYING CASE	O	1	*		
C10	417724-5	LATCH		2	*		
C20	819144-3	MAKITA LOGO LABEL		1	*		
A02-2	821843-5	PLASTIC CASE	<	1			
C10	417724-5	LATCH		2			
A03	193885-2	QUICK CHANGE DRILL CHUCK		1	*		
A03-1	194079-2	DRILL CHUCK SET	O	1	*		
C10	251425-3	- FLAT HEAD SCREW M6X22		1	*		
C20	324353-6	CHUCK HOLDER		1	*		
C30	418216-7	SPACER		1	*		
A03-2	194079-2	DRILL CHUCK SET	<	1			
C20	324353-6	CHUCK HOLDER		1			
C30	418216-7	SPACER		1			
F06	192349-3	JOINT 25		1			

Please state Parts No. when your order.

Print Date 03/01/2024