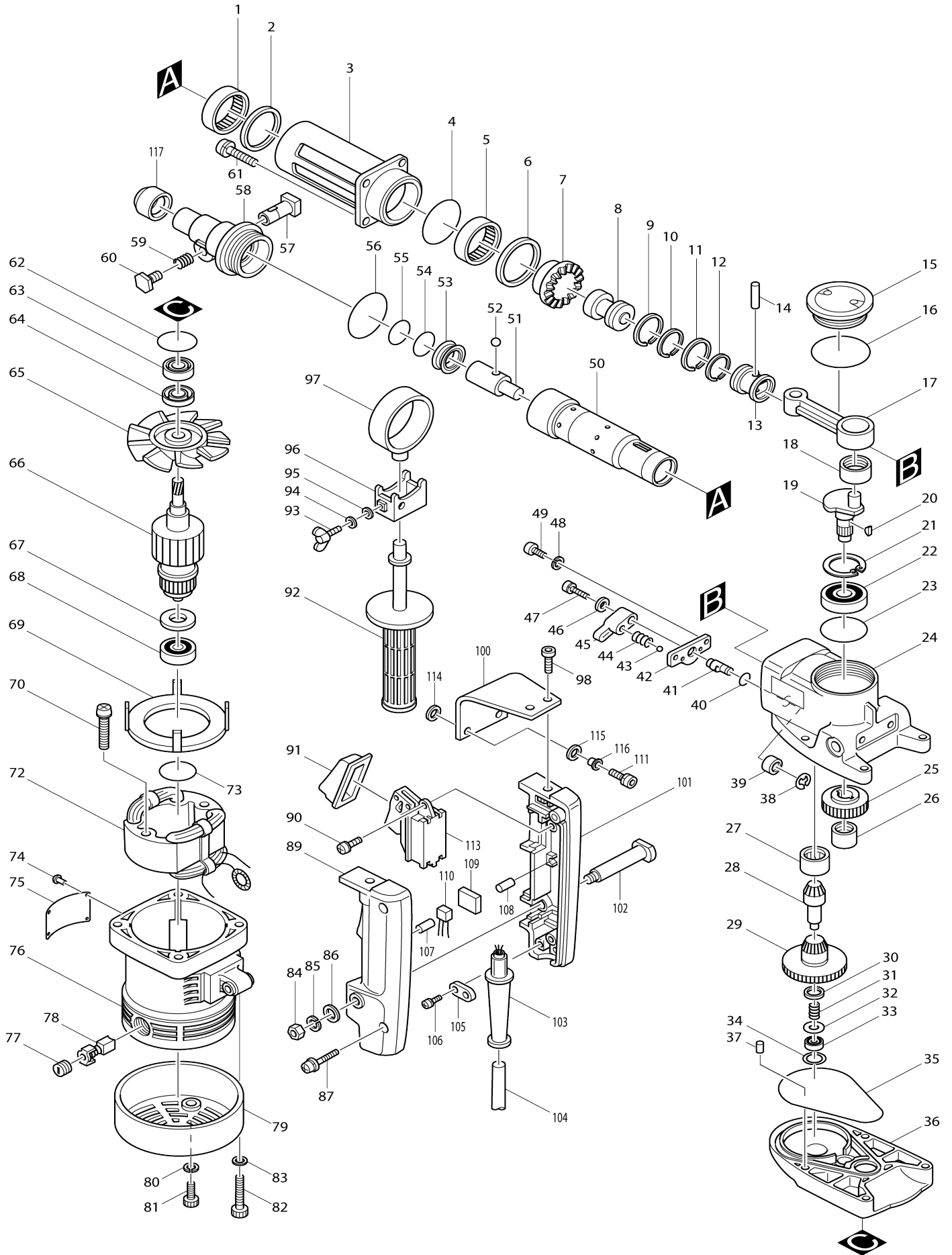


Model No.HR3850B ROTARY HAMMER 38MM



Model No.HR3850B ROTARY HAMMER 38MM

Item No.	Parts No.	Description	Interchangeability	Q'ty	New/Old	Note1	Note2
001	212551-3	NEEDLE BEARING 4516		1			
002	267057-6	FLAT WASHER 40		1			
003	311674-5	BARREL		1			
004	213655-4	O RING 56		1			
005	212551-3	NEEDLE BEARING 4516		1			
006	253832-6	FLAT WASHER 45		1			
007	221347-1	SPIRAL BEVEL GEAR 36		1			
008	321369-2	STRIKER		1	*		
008-1	321369-2	STRIKER	O	1			
009	412038-7	PISTON RING 34		1			
010	412041-8	INNER RING 30		1			
011	412038-7	PISTON RING 34		1			
012	341743-8	INNER RING 30		1			
013	321370-7	PISTON		1			
014	256029-6	PIN 8		1			
015-2	150641-3	CRANK CAP COMPLETE		1	*		
C10	810712-5	CAUTION LABEL		1	*		
015-3	416136-9	CRANK CAP	O	1			
016	213654-6	O RING 60		1			
017	312956-8	ROD		1			
018	212108-0	NEEDLE BEARING 1212		1			
019	321726-4	CRANK SHAFT		1			
020	254001-2	WOODRUFF KEY 4		2			
021	962203-3	RETAINING RING R-47		1			
022	211309-7	BALL BEARING 6204		1	*		
022-1	211324-1	BALL BEARING 6204LLU	O	1			
023	213606-7	O RING 48		1			
024	157307-6	CRANK HOUSING COMPLETE		1			
D10		INC. 23					
025	221689-3	HELICAL GEAR 33		1			
026	212102-2	NEEDLE BEARING 1210		1			
027	212359-5	NEEDLE BEARING 2216		1			
028	153150-1	GEAR COMPLETE		1			
029	134527-9	TORQUE LIMITER ASS'Y		1			
C10	150055-6	TORQUE LIMITER COMPLETE		1			
D10		INC. 28,30-33					
030	253310-6	THIN WASHER 10		1			
031	231430-6	COMPRESSION SPRING 11		1			
032	253865-1	FLAT WASHER 8		1			
033	211034-0	BALL BEARING 608		1			
034	253314-8	THIN WASHER 15		1			
035	213853-0	O RING 100		1	*		
035-1	421689-5	SEAL RING	X	1			
036	157306-8	GEAR HOUSING		1	*		
D10		INC. 37,62					
036-1	157306-8	GEAR HOUSING	<	1			
D10		INC. 37,62					

037	263005-3	RUBBER PIN 6		1		
038	961011-9	STOP RING E-4		1		
039	212011-5	NEEDLE BEARING 609		1		
040	213055-8	O RING 10		1		
041	321727-2	CHANGE SHAFT		1		
042	342786-3	PLATE		1		
043	216002-8	STEEL BALL 4.8		1		
044	231317-2	COMPRESSION SPRING 3		1		
045	410331-3	CHANGE LEVER		1		
046	941052-1	FLAT WASHER 4		1		
047	922126-7	HEX. SOCKET HEAD BOLT M4X16		1		
048	942101-7	SPRING WASHER 5		2		
049	922212-4	HEX. SOCKET HEAD BOLT M5X12		2		
050	152335-6	CYLINDER LINER COMPLETE		1		
C10	254231-5	KEY 4		2		
051	322218-6	IMPACT BOLT		1	*	
051-1	323718-9	IMPACT BOLT	X	1		
052	216004-4	STEEL BALL 7.9		3		
053	213420-1	X RING 28		1	*	
053-1	213428-5	X RING 28	X	1		
054	213411-2	O RING 27		1		
055	213411-2	O RING 27		1		
056	213604-1	O RING 50		1		
057	331301-8	TOOL RETAINER		1		
058	322221-7	TOOL HOLDER		1	*	
058-1	323717-1	TOOL HOLDER	X	1		
059	231375-8	COMPRESSION SPRING 15		1		
060	265321-9	HEX. BOLT M8X12		1		
061	922341-3	HEX. SOCKET HEAD BOLT M6X25		4		
062	213459-4	O RING 32		1		
063	211109-5	BALL BEARING 6201		1		
064	213160-1	OIL SEAL 14		1		
065	241634-2	FAN 94		1		
066C_	514773-4	ARMATURE ASS'Y 220V		1		
D11		INC. 65,67,68				
067	681624-7	INSULATION WASHER		1	*	
067-1	681635-2	INSULATION WASHER	O	1		
068-1	211066-7	BALL BEARING 6200LLB		1	*	
068-2	211087-9	BALL BEARING 6200DDW	X	1		
069	410163-8	BAFFLE PLATE		1		
070-1	265347-1	+ HEX. BOLT M5X45		2		
072H 1	528910-4	FIELD ASS'Y 220V		1		
C10	654020-2	RING TERMINAL		2		
C20	654502-4	CONNECTOR P-2		2		
073	213406-5	O RING 30		1		
074	953106-2	RIVET 0-5		4		
075	856221-0	NAME PLATE HR3850B		1		
076-2	159034-1	MOTOR HOUSING		1	*	
C10	643653-8	BRUSH HOLDER 6.5-13.5		2	*	
C20	913206-0	SET SCREW M5X8		2	*	
D10		INC. 73				

076-3	159034-1	MOTOR HOUSING	O	1		
C10	643653-8	BRUSH HOLDER 6.5-13.5		2		
C20	913206-0	SET SCREW M5X8		2		
D10		INC. 73				
077	643650-4	BRUSH HOLDER CAP 6.5-13.5		2	*	
077-1	643650-4	BRUSH HOLDER CAP 6.5-13.5	O	2		
078	181048-2	A.C. CARBON BRUSH CB-155		1	*	
078-1	194987-7	CARBON BRUSH SET CB-155	O	1		
079	284055-5	REAR COVER		1		
080	942101-7	SPRING WASHER 5		2	*	
081	922222-1	HEX. SOCKET HEAD BOLT M5X16		2	*	
081-1	922221-3	HEX. SOCKET HEAD BOLT M5X16	O	2		
082	922376-4	HEX. SOCKET HEAD BOLT M6X55		4		
083	941151-9	FLAT WASHER 6		4		
084	931302-2	HEX. NUT M6		1		
085	942151-2	SPRING WASHER 6		1		
086	941151-9	FLAT WASHER 6		1		
087	911243-8	PAN HEAD SCREW M5X25		2		
089-1	182077-8	HANDLE SET		1		
D10		INC. 101,107,108				
090	911129-6	PAN HEAD SCREW M4X16		2		
091	421265-5	DUST COVER		1		
092	273472-4	GRIP 32		1		
093	924321-5	WING BOLT M6X18		1		
094	261049-7	RUBBER WASHER 5.5		1		
095	261049-7	RUBBER WASHER 5.5		1		
096	164543-7	GRIP BASE		1		
097	164572-0	GRIP HOLDER		1		
098-1	922316-2	HEX. SOCKET HEAD BOLT M6X14		2		
100-1	343754-9	CUSHION PLATE		2		
101-1	182077-8	HANDLE SET		1		
D10		INC. 89,107,108				
102	321210-9	HANDLE SHAFT		1		
103B_	682540-6	CORD GUARD 9.3-90		1	*	
103B1	682505-8	CORD GUARD 10-90	O	1		
104K1	665883-1	POWER SUPPLY CORD 1.0-2-5.0		1		
105C_	687031-2	STRAIN RELIEF		1		
106	911133-5	PAN HEAD SCREW M4X18		2		
107	263002-9	RUBBER PIN 4		1		
108	263002-9	RUBBER PIN 4		1		
109	685700-9	SPONGE SHEET		1		
110C_	645253-0	NOISE SUPPRESSOR		1		
111-2	265914-2	HEX. SOCKET HEAD BOLT M6X25		2		
113-1	651145-3	SWITCH C3D-H-MS		1		
114	262051-3	RUBBER RING 9		2		
115	262052-1	RUBBER RING 9		2		
116	257636-8	SLEEVE 6		2		
117	421596-2	CAP		1		
118	819063-3	MAKITA LABEL		2		
400A_	150589-9	PLASTIC CARRYING CASE COMP.		1		
C10	817222-3	CAUTION LABEL		1	*	
C20	817812-2	CAUTION LABEL		1	*	

C21	817536-0	CAUTION LABEL	<	1			
C30	416401-6	LATCH		2	*		
C31	163467-4	LATCH	X	2			
C40	819145-1	MAKITA LOGO LABEL		1			
401	321248-4	DEPTH GAUGE		1			
403	783202-0	HEX. WRENCH 4		1			

Please state Parts No. when your order.

Print Date 24.10.2023