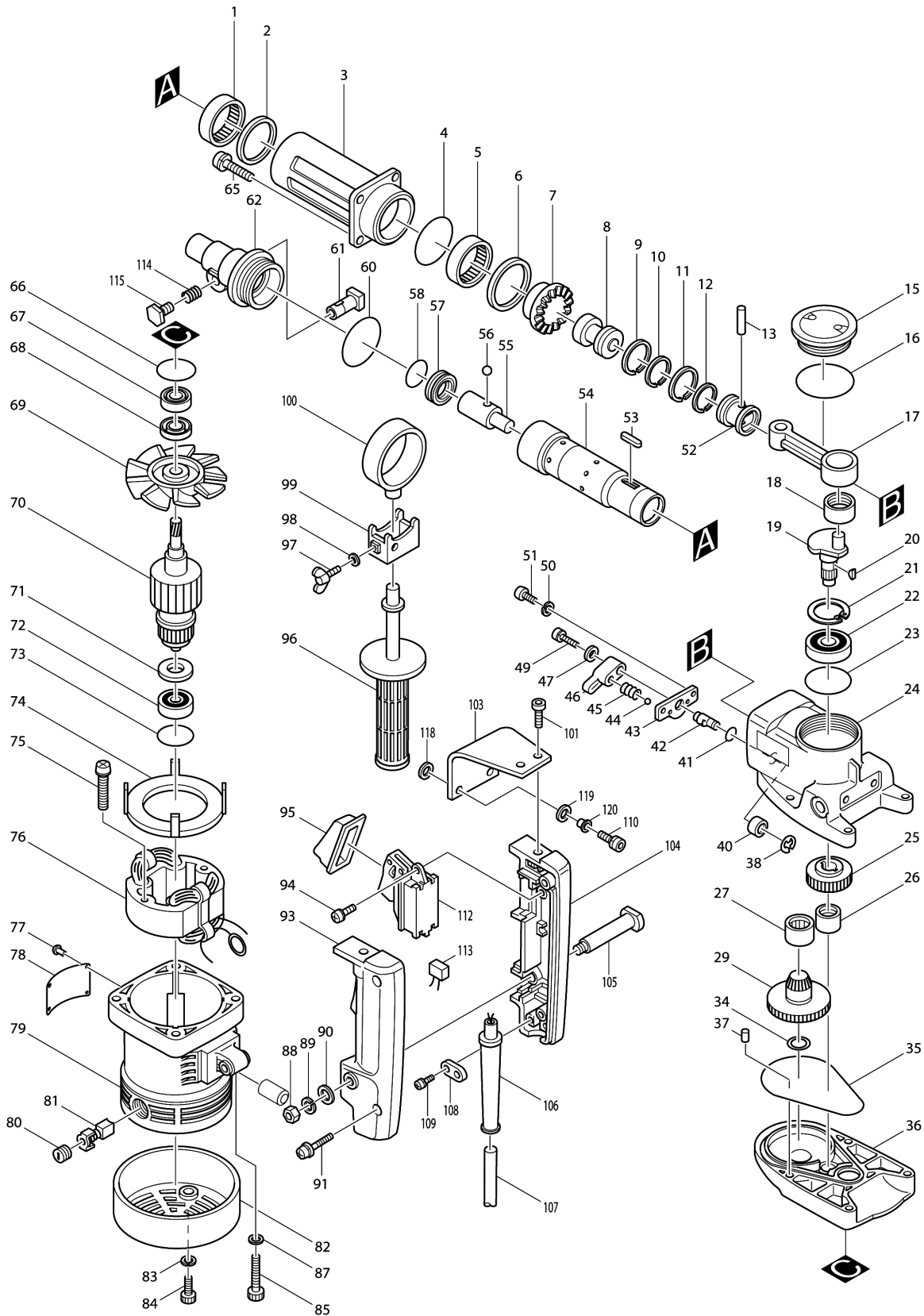


Model No.HR3850K ROTARY HAMMER 38MM



Model No.HR3850K ROTARY HAMMER 38MM

Item	Parts No.	Description	I/C	Qty	New/Old	Opt. 1	Opt. 2	Note
001	212551-3	NEEDLE BEARING 4516		1				
002-1	267057-6	FLAT WASHER 40		1				
003	311674-5	BARREL		1				
004	213655-4	O RING 56		1				
005	212551-3	NEEDLE BEARING 4516		1				
006	253832-6	FLAT WASHER 45		1				
007	221347-1	SPIRAL BEVEL GEAR 36		1				
008	321369-2	STRIKER		1	*			
008-1	321369-2	STRIKER	O	1				
009	412038-7	PISTON RING 34		1				
010	412041-8	INNER RING 30		1				
011	412038-7	PISTON RING 34		1				
012	341743-8	INNER RING 30		1				
013	256029-6	PIN 8		1				
015-3	150641-3	CRANK CAP COMPLETE		1	*			
C10	810712-5	CAUTION LABEL		1	*			
015-4	416136-9	CRANK CAP	O	1				
016	213654-6	O RING 60		1				
017	312956-8	ROD		1				
018	212108-0	NEEDLE BEARING 1212		1				
019	321726-4	CRANK SHAFT		1				
020	254001-2	WOODRUFF KEY 4		2				
021	962203-3	RETAINING RING R-47		1				
022	211309-7	BALL BEARING 6204		1	*			
022-1	211324-1	BALL BEARING 6204LLU	O	1				
023	213606-7	O RING 48		1				
024-1	157307-6	CRANK HOUSING COMPLETE		1				
D10		INC. 23						
025	221689-3	HELICAL GEAR 33		1				
026	212102-2	NEEDLE BEARING 1210		1				
027	212359-5	NEEDLE BEARING 2216		1				
029-2	134527-9	TORQUE LIMITER ASS'Y		1				
034	253314-8	THIN WASHER 15		1				
035	213853-0	O RING 100		1	*			
035-1	421689-5	SEAL RING	X	1				
036	157306-8	GEAR HOUSING		1	*			
D10		INC. 37,66			*			
036-1	157306-8	GEAR HOUSING	<	1				
D10		INC. 37,66						
037	263005-3	RUBBER PIN 6		1				
038	961011-9	STOP RING E-4		1				
040	212011-5	NEEDLE BEARING 609		1				
041	213055-8	O RING 10		1				
042	321727-2	CHANGE SHAFT		1				
043	342786-3	PLATE		1				

Please order the parts with part number.

Print Date 25/10/2023

Model No.HR3850K ROTARY HAMMER 38MM

Item	Parts No.	Description	I/C	Qty	New/Old	Opt. 1	Opt. 2	Note
044	216002-8	STEEL BALL 4.8		1				
045	231317-2	COMPRESSION SPRING 3		1				
046	410331-3	CHANGE LEVER		1				
047	941052-1	FLAT WASHER 4		1				
049-1	922126-7	HEX. SOCKET HEAD BOLT M4X16		1				
050-1	942101-7	SPRING WASHER 5		2				
051-2	922212-4	HEX. SOCKET HEAD BOLT M5X12		2				
052	321370-7	PISTON		1				
053-1	254231-5	KEY 4		2				
054-1	152335-6	CYLINDER LINER COMPLETE		1				
D10		INC. 53						
055	321934-7	IMPACT BOLT		1				
056	216004-4	STEEL BALL 7.9		3				
057-1	213471-4	X RING 31.5		1				
058	213419-6	O RING 30		1				
060	213604-1	O RING 50		1				
061-1	331301-8	TOOL RETAINER		1				
062-3	322860-3	TOOL HOLDER	O	1				
065-1	922341-3	HEX. SOCKET HEAD BOLT M6X25		4				
066	213459-4	O RING 32		1				
067	211109-5	BALL BEARING 6201		1				
068	213160-1	OIL SEAL 14		1				
069	241634-2	FAN 94		1				
070C_	514773-4	ARMATURE ASS'Y 220V		1				
D11		INC. 69,71,72						
071	681624-7	INSULATION WASHER		1	*			
071-1	681635-2	INSULATION WASHER	O	1				
072-2	211066-7	BALL BEARING 6200LLB		1	*			
072-3	211087-9	BALL BEARING 6200DDW	X	1				
073	213406-5	O RING 30		1				
074	410163-8	BAFFLE PLATE		1				
075-2	265347-1	+ HEX. BOLT M5X45		2				
076K1	528910-4	FIELD ASS'Y 220V		1				
C10	654020-2	RING TERMINAL		2				
C20	654502-4	CONNECTOR P-2		2				
077	953106-2	RIVET 0-5		4				
078	855545-1	NAME PLATE HR3850K		1				
079-1	159034-1	MOTOR HOUSING		1	*			
C10	643653-8	BRUSH HOLDER 6.5-13.5		2	*			
C20	913206-0	SET SCREW M5X8		2	*			
D10		INC. 73			*			
079-2	159034-1	MOTOR HOUSING	O	1				
C10	643653-8	BRUSH HOLDER 6.5-13.5		2				
C20	913206-0	SET SCREW M5X8		2				

Please order the parts with part number.

Print Date 25/10/2023

Model No.HR3850K ROTARY HAMMER 38MM

Item	Parts No.	Description	I/C	Qty	New/Old	Opt. 1	Opt. 2	Note
D10		INC. 73						
080	643650-4	BRUSH HOLDER CAP 6.5-13.5		2	*			
080-1	643650-4	BRUSH HOLDER CAP 6.5-13.5	O	2				
081	181048-2	A.C. CARBON BRUSH CB-155		1	*			
081-1	194987-7	CARBON BRUSH SET CB-155	O	1				
082	284055-5	REAR COVER		1				
083-1	942101-7	SPRING WASHER 5		2	*			
084-2	922222-1	HEX. SOCKET HEAD BOLT M5X16		2	*			
084-3	922221-3	HEX. SOCKET HEAD BOLT M5X16	O	2				
085-1	922376-4	HEX. SOCKET HEAD BOLT M6X55		4				
087	941151-9	FLAT WASHER 6		4				
088	931302-2	HEX. NUT M6		1				
089	942151-2	SPRING WASHER 6		1				
090	941151-9	FLAT WASHER 6		1				
091	911243-8	PAN HEAD SCREW M5X25		2				
093-1	182077-8	HANDLE SET		1				
C10	263002-9	RUBBER PIN 4		2				
D10		INC. 104						
094-1	911129-6	PAN HEAD SCREW M4X16		1				
095	421265-5	DUST COVER		1				
096	273472-4	GRIP 32		1				
097	924321-5	WING BOLT M6X18		1				
098	261049-7	RUBBER WASHER 5.5		2				
099	164543-7	GRIP BASE		1				
100	164572-0	GRIP HOLDER		1				
101-3	922316-2	HEX. SOCKET HEAD BOLT M6X14		2				
103-1	343754-9	CUSHION PLATE		2				
104-1	182077-8	HANDLE SET		1				
C10	263002-9	RUBBER PIN 4		2				
D10		INC. 93						
105	321210-9	HANDLE SHAFT		1				
106B_	682540-6	CORD GUARD 9.3-90		1	*			
106B1	682505-8	CORD GUARD 10-90	O	1				
107E1	665883-1	POWER SUPPLY CORD 1.0-2-5.0		1				
108C_	687031-2	STRAIN RELIEF		1				
109-1	911133-5	PAN HEAD SCREW M4X18		2				
110-4	265914-2	HEX. SOCKET HEAD BOLT M6X25		2				
112-1	651145-3	SWITCH C3D-H-MS		1				
113D1	645253-0	NOISE SUPPRESSOR		1				
114	231375-8	COMPRESSION SPRING 15		1				
115-2	265321-9	HEX. BOLT M8X12		1				
118	262051-3	RUBBER RING 9		2				
119	262052-1	RUBBER RING 9		2				

Please order the parts with part number.

Print Date 25/10/2023

Model No.HR3850K ROTARY HAMMER 38MM

Item	Parts No.	Description	I/C	Qty	New/Old	Opt. 1	Opt. 2	Note
120	257636-8	SLEEVE 6		2				
121	819063-3	MAKITA LABEL		2				
400A_	150582-3	PLASTIC CARRYING CASE COMP.		1				
C10	817812-2	CAUTION LABEL		1				
C20	416401-6	LATCH		2	*			
C21	163467-4	LATCH	X	2				
C30	819145-1	MAKITA LOGO LABEL		1				
401	321248-4	DEPTH GAUGE		1				
403	783202-0	HEX. WRENCH 4		1				
405	835258-0	INNER CASE		1				

Please order the parts with part number.

Print Date 25/10/2023