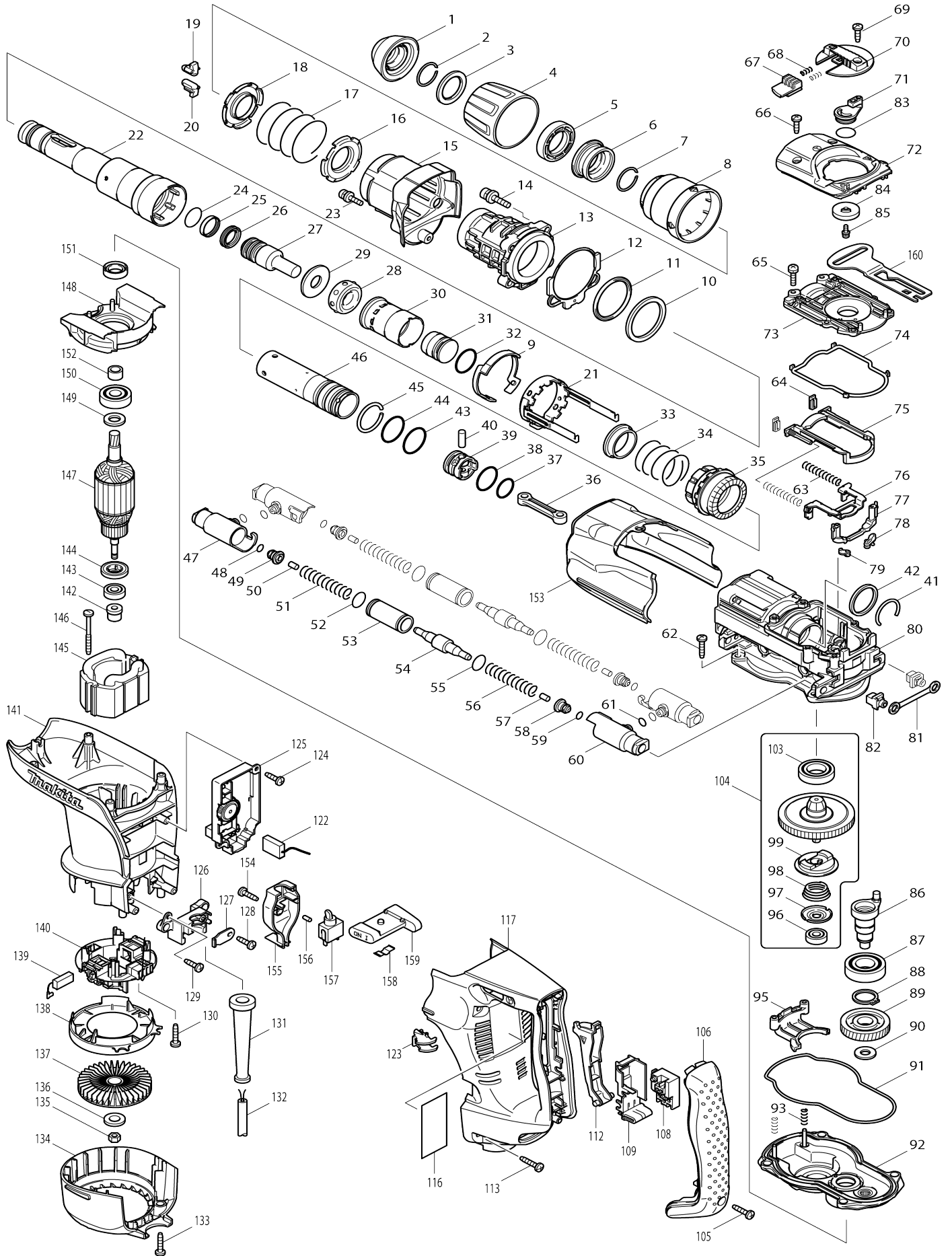


Model No.HR4010C ROTARY HAMMER 40MM



Model No.HR4010C ROTARY HAMMER 40MM

Item No.	Parts No.	Description	Interchangability	Q'ty	New/Old	Note1	Note2
001	286272-3	TOOL HOLDER CAP		1	*		
001-1	286285-4	TOOL HOLDER CAP	<	1			
002	231984-3	RING SPRING 25		1			
003	267272-2	FLAT WASHER 28		1			
004	419015-0	CHUCK COVER		1			
005	419002-9	SPACER		1			
006	324548-1	CHUCK RING		1			
007	231984-3	RING SPRING 25		1			
008	419016-8	RELEASE COVER		1			
009	419017-6	LOCK SLEEVE GUIDE		1	*		
009-1	419760-7	LOCK SLEEVE GUIDE	S	1			
010	267298-4	FLAT WASHER 45		1	*		
010-1	267336-2	FLAT WASHER 45	S	1			
011	262116-1	URETHAN RING 45		1			
012	421911-0	SEAL SHEET		1			
013	154621-1	BARREL COMPLETE		1			
014	922353-6	HEX.SOCKET HEAD BOLT M6X30		4			
015	154624-5	BARREL COVER COMPLETE		1			
C10	810100-6	CAUTION LABEL		1			
016	345579-7	SPRING GUIDE		1			
017	233431-0	COMPRESSION SPRING 48		1			
018	345579-7	SPRING GUIDE		1			
019	310161-1	TOOL RETAINER		1			
020	310161-1	TOOL RETAINER		1			
021	165407-8	LOCK SLEEVE		1	*		
021-1	165446-8	LOCK SLEEVE	<	1	*		
021-2	165633-9	LOCK SLEEVE	<	1			
022	324542-3	TOOL HOLDER		1			
023	922128-3	HEX. SOCKET HEAD BOLT M4X16		1	*		
023-1	266437-3	HEX. SOCKET HEAD BOLT M4X16	<	1			
024	213317-4	O RING 20		1			
025	213392-0	FLUORIDE RING 25		1			
026	213281-9	X-RING 18		1			
027	324569-3	IMPACT BOLT		1			
028	421901-3	RUBBER RING 17		1			
029	324573-2	RING 17		1			
030	419003-7	SLIDE SLEEVE		1			
031	324571-6	STRIKER		1			
032	213962-5	O RING 22		1			
033	331709-6	RING 33		1			
034	233448-3	COMPRESSION SPRING 37		1			
035	227486-5	STRAIGHT BEVEL GEAR 25		1	*		
035-1	227509-9	STRAIGHT BEVEL GEAR 25	<	1			
036	419005-3	CONNECTING ROD		1			
037	213379-2	O RING 21		1			
038	213962-5	O RING 22		1			
039	419004-5	PISTON		1			

040	256197-5	PIN 7		1		
041	233937-8	RING SPRING 31		1		
042	257268-1	RING 33		1		
043	213406-5	O RING 30		1		
044	213406-5	O RING 30		1		
045	233935-2	RING SPRING 32		1		
046	324570-8	CYLINDER 28.5		1		
047	317923-8	PIPE HOLDER		2		
048	213030-4	O RING 8		2		
049	419011-8	SPRING GUIDE		2		
050	263005-3	RUBBER PIN 6		2		
051	233435-2	COMPRESSION SPRING 11		2		
052	213275-4	O RING 18		2		
053	324572-4	PIPE 16		2		
054	324574-0	COUNTER WEIGHT		2	*	
054-1	324574-0	COUNTER WEIGHT	O	2		
055	213275-4	O RING 18		2		
056	233435-2	COMPRESSION SPRING 11		2		
057	263005-3	RUBBER PIN 6		2		
058	419011-8	SPRING GUIDE		2		
059	213030-4	O RING 8		2		
060	317923-8	PIPE HOLDER		2		
061	213030-4	O RING 8		4		
062	266041-8	TAPPING SCREW 5X25		4		
063	233432-8	COMPRESSION SPRING 7		2		
064	421910-2	SEAL PLATE		2		
065	911133-5	PAN HEAD SCREW M4X18		6		
066	266192-7	TAPPING SCREW 4X14		2		
067	419009-5	LOCK BUTTON		1		
068	233436-0	COMPRESSION SPRING 3		2		
069	266192-7	TAPPING SCREW 4X14		1		
070	419020-7	CHANGE LEVER		1		
071	419007-9	CRANK LEVER		1		
072	317925-4	CRANK CAP COVER		1		
073	419030-4	CRANK CAP		1		
074	421908-9	SEAL RING		1		
075	419019-2	LINK PLATE GUIDE		1		
076	345582-8	LINK PLATE		1		
077	419012-6	AIR PIPE		1		
078	421909-7	AIR PIPE SEAL		1		
079	421909-7	AIR PIPE SEAL		1		
080	154622-9	CRANKHOUSING COMPLETE		1		
C10	214656-5	PLANE BEARING 51		1		
C20	324568-5	RING 40		1		
081	423345-3	CUSHION PLATE		1		
082	419008-7	FIX GUIDE		2		
083	213262-3	O RING 18		1		
084	419006-1	LINK LEVER		1		
085	911511-9	PAN HEAD SCREW M4X10		1		
086	324550-4	CRANK SHAFT		1		
087	211332-2	BALL BEARING 6004LLU		1		
088	961060-6	RETAINING RING S-20		1		

089	226605-0	HELICAL GEAR 38		1		
090	253180-3	FLAT WASHER 10		1		
091	421907-1	SEAL RING		1		
092	154623-7	GEAR HOUSING COMPLETE		1		
C10	212075-9	NEEDLE ROLLER BEARING 1010		1		
C20	268136-3	PIN 4		2		
093	233433-6	COMPRESSION SPRING 5		2		
095	419018-4	CHANGE PLATE		1		
096	210005-4	BALL BEARING 608DDW		1		
097	345581-0	CUP WASHER 8		1		
098	233936-0	CONICAL COMPRESSIONSPRING 19-27		1		
099	324549-9	DRIVING FLANGE		1		
103	211323-3	BALL BEARING 6904LLU		1		
104	135086-6	TORQUE LIMITER ASS'Y		1	*	
D10		INC. 96-103				
104-1	135508-6	TORQUE LIMITER ASS'Y	<	1		
C10	267456-2	THIN WASHER 38		1		
D10		INC. 96-103				
105	265995-6	TAPPING SCREW 4X18		1		
106	419036-2	HANDLE COVER		1		
108	650567-4	SWITCH TG73B-1		1	*	
108-1	650676-9	SWITCH C3PA-1111	<	1		
109	154626-1	SWITCH HOLDER COMPLETE		1		
C10	423344-5	SPONGE SEAT		1		
112	419028-1	SWITCH LEVER		1		
113	266041-8	TAPPING SCREW 5X25		4		
116	861492-6	HR4010C NAME PLATE		1		
117	419040-1	HANDLE		1		
122	638407-6	LEAD UNIT		1		
123	419010-0	LENS		1		
124	266192-7	TAPPING SCREW 4X14		1	*	
124-1	266901-4	TAPPING SCREW 4X14	<	1		
125	631657-2	CONTROLLER		1		
126	419024-9	CORD CLAMP BASE		1		
127	687169-3	STRAIN RELIEF		1		
128	266192-7	TAPPING SCREW 4X14		1		
129	266192-7	TAPPING SCREW 4X14		1	*	
129-1	266901-4	TAPPING SCREW 4X14	<	1		
130	265995-6	TAPPING SCREW 4X18		4		
131	682560-0	CORD GUARD 10		1		
132	695123-3	POWER SUPPLY CORD 1.5-2-4.0		1	*	
132-1	665638-4	POWER SUPPLY CORD 1.5-2-4.0	O	1	*	
132-2	695123-3	POWER SUPPLY CORD 1.5-2-4.0	O	1		
133	265995-6	TAPPING SCREW 4X18		2		
134	419032-0	REAR COVER		1		
135	931303-0	HEX. NUT M6		1		
136	253047-5	FLAT WASHER 6		1		
137	241876-8	FAN 76		1		
138	419022-3	FAN GUIDE		1		
139	194160-9	CARBON BRUSH CB-350		1	*	
139-1	195004-6	CARBON BRUSH SET CB-350	O	1		

140	638393-1	BRUSH HOLDER UNIT		1	*		
C10	643816-6	BRUSH HOLDER		2	*		
C20	266007-8	TAPPING SCREW BIND PT 3X10		4	*		
140-1	638715-5	BRUSH HOLDER UNIT	<	1			
141	154619-8	MOTOR HOUSING COMPLETE		1			
C10	345650-7	WASHER PLATE		1			
142	324390-0	SHOULDER SLEEVE 6		1			
143	210005-4	BALL BEARING 608DDW		1			
144	681650-6	INSULATION WASHER		1			
145	625738-2	FIELD 220-240V		1	*		
145-1	625758-6	FIELD 220-240V	<	1			
146	266095-5	TAPPING SCREW 5X55		2			
147	513633-7	ARMATURE ASS'Y 220-240V		1			
D10		INC. 143,144					
148	419021-5	BAFFLE PLATE		1			
149	253084-9	FLAT WASHER 12		1			
150	211137-0	BALL BEARING 6201LLU		1			
151	213231-4	OIL SEAL 15		1			
152	331596-3	SLEEVE 12		1			
153	419033-8	CRANK HOUSING COVER		1			
154	266192-7	TAPPING SCREW 4X14		1			
155	419026-5	SWITCH BOX		1			
156	263027-3	RUBBER PIN 4		1			
157	651418-4	SWITCH ST115A-40		1	*		
157-1	651418-4	SWITCH ST115A-40	O	1			
158	232209-8	LEAF SPRING		1			
159	154635-0	SLIDE LEVER COMPLETE		1			
C10	257754-2	SLEEVE 4		1			
C20	268138-9	FLAT FILLISTER HD.PIN 4		1			
160	419027-3	CONTROL PLATE		1			
161	421939-8	SPONGE SHEET		1			
162	819361-5	CLEAR LABEL		1			
A01	134890-0	SIDE HANDLE 68 ASS'Y		1			
C10	151769-0	SIDE HANDLE 68 COMPLETE		1			
C20	252640-2	WING NUT M8		1			
C30	265439-6	HEX. BOLT M8X150		1			
C40	417002-3	SIDE HANDLE CAM		2			
C50	417003-1	SIDE HANDLE		1			
A02	134803-1	GRIP 36 ASS'Y		1	*		
C10	152554-4	GRIP 36 COMPLETE		1	*		
C20	265701-9	THUMB SCREW M6X14		1	*		
C30	266163-4	CUP SQUARE NECK BOLT M8X80		1	*		
C40	321248-4	DEPTH GAUGE		1	*		
C50	344491-8	GRIP SPRING 68		1	*		
C60	344492-6	PLATE		1	*		
C70	416299-1	SIDE GRIP BASE 68		1	*		
C80	931302-2	HEX. NUT M6		1	*		
A02-1	135209-6	GRIP 36 ASS'Y	O	1			
C10	158131-0	GRIP 36 COMPLETE		1			
C20	265701-9	THUMB SCREW M6X14		1			
C30	266163-4	CUP SQUARE NECK BOLT M8X80		1			

C40	321248-4	DEPTH GAUGE		1		
C50	344491-8	GRIP SPRING 68		1		
C60	344492-6	PLATE		1		
C70	416299-1	SIDE GRIP BASE 68		1		
C80	931302-2	HEX. NUT M6		1		
A03	154677-4	PLASTIC CARRYING CASE COMPL ETE		1	*	
C10	416401-6	LATCH		2	*	
C11	163467-4	LATCH	X	2	*	
C20	816841-2	INDICATION LABEL		1	*	
A03-1	158691-2	PLASTIC CARRYING CASE COMPL ETE	O	1	*	
C10	816841-2	INDICATION LABEL		1	*	
A03-2	140761-1	PLASTIC CARRYING CASE COMPL ETE	O	1	*	
C10	816841-2	INDICATION LABEL		1	*	
C11	892398-7	INDICATION LABEL	O	1	*	
A03-3	196184-1	PLASTIC CASE SET	O	1	*	
C11	892398-7	INDICATION LABEL	O	1	*	
A03-4	196183-3	PLASTIC CASE SET	O	1		
C11	892398-7	INDICATION LABEL	O	1		
A04	181573-3	GREASE VESSEL 93G		1	*	
C10	817105-7	CAUTION LABEL		1	*	
A04-1	194683-7	GREASE VESSEL SET	O	1	*	
A04-2	198993-4	GREASE VESSEL SET	<	1		
A05	443122-7	CLOTH		1		
A06	892058-1	HR4010C PLASTIC CASE LABEL		2		
B01	195195-3	HAMMER SERVICE KIT		1		
C10	181490-7	HAMMER GREASE 30G		2		
D10		INC. 1,24-26,32,38,139				
F17	196074-8	DUST EXTRACTOR ATTACHMENT SET		1		
F19-1	199143-4	DUST EXTRACTOR ATT SET(EU)	<	1		
F20-1	199143-4	DUST EXTRACTOR ATT SET(EU)	<	1		
F22-1	199144-2	DUST EXTRACTOR ATT SET(EU)	<	1		
C10	417765-1	FRONT CUFF 22		1		
C20	417766-9	FRONT CUFF 38		1		
C30	415021-3	HOSE JOINT		1		
F23-1	199144-2	DUST EXTRACTOR ATT SET(EU)	<	1		
C10	417765-1	FRONT CUFF 22		1		
C20	417766-9	FRONT CUFF 38		1		
C30	415021-3	HOSE JOINT		1		

Please state Parts No. when your order.

Print Date 01/11/2024