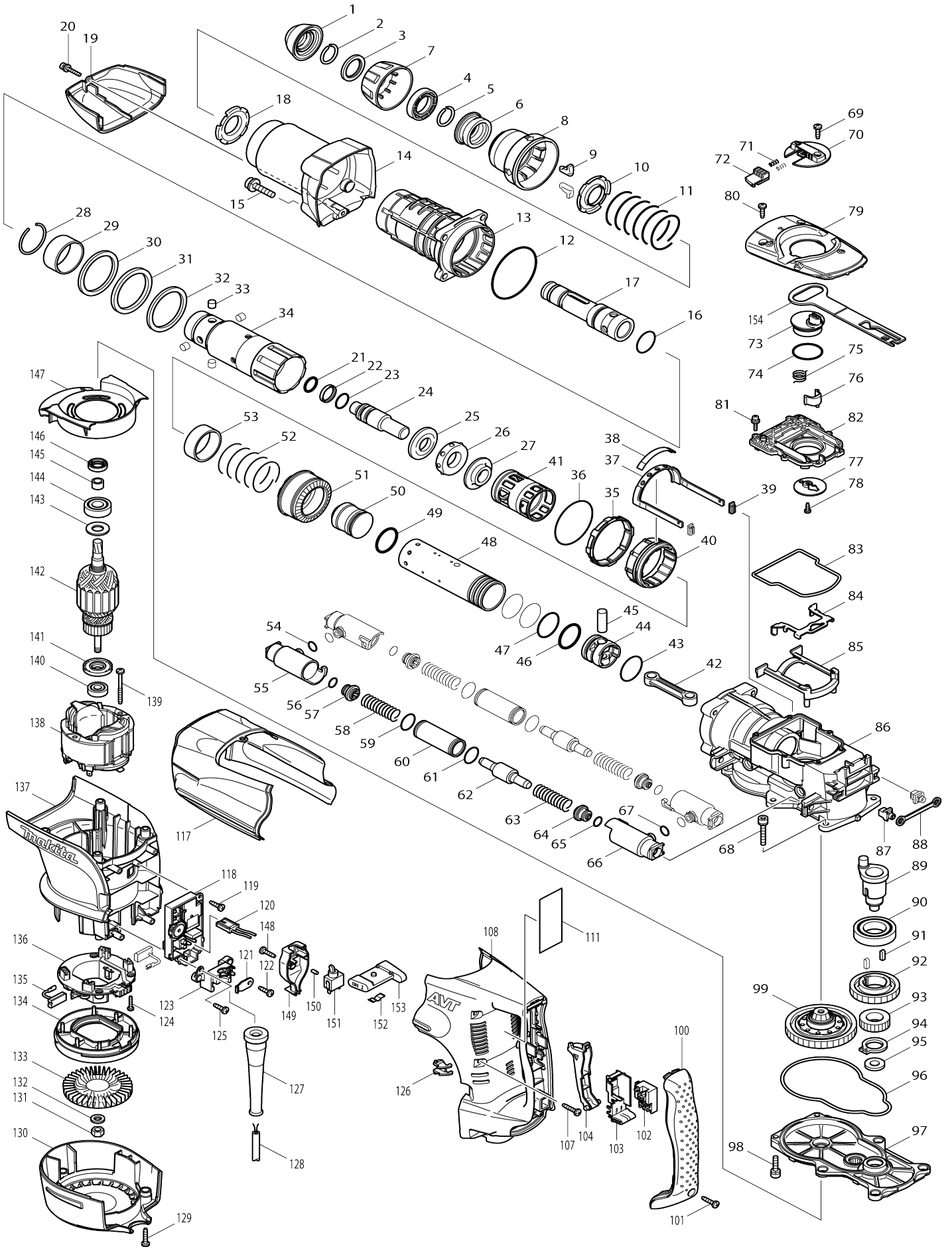


# Model No.HR5210C ROTARY HAMMER 52MM



Model No.HR5210C ROTARY HAMMER 52MM

Item No.	Parts No.	Description	Interchangability	Q'ty	New/Old	Note1	Note2
001	286272-3	TOOL HOLDER CAP		1	*		
001-1	286285-4	TOOL HOLDER CAP	<	1			
002	233948-3	RING SPRING 25		1			
003	257280-1	RING 28		1			
004	419002-9	SPACER		1			
005	233948-3	RING SPRING 25		1			
006	324752-2	CHUCK RING		1			
007	419778-8	CHUCK COVER		1			
008	419779-6	RELEASE COVER		1			
009	310178-4	TOOL RETAINER		2			
010	345804-6	SPRING GUIDE		1			
011	233496-2	COMPRESSION SPRING 49		1			
012	213766-5	O-RING 78		1			
013	158175-0	BARREL COMPLETE		1			
C10	213576-0	OIL SEAL 45		1			
C20	214657-3	PLANE BEARING 52		1			
C30	214658-1	PLANE BEARING 57		1			
014	158179-2	BARREL COVER COMPLETE		1			
015	922456-6	HEX. SOCKET HEAD BOLT M8X35		4			
016	213492-6	O-RING 32		1			
017	324740-9	TOOL HOLDER A		1			
018	345804-6	SPRING GUIDE		1			
019	419791-6	GEAR HOUSING COVER		1			
020	922148-7	HEX. SOCKET HEAD BOLT M4X25		1			
021	213274-6	O RING 18		1			
022	213392-0	FLUORIDE RING 25		1			
023	213317-4	O RING 20		1			
024	324753-0	IMPACT BOLT		1			
025	324756-4	RING 20		1			
026	424000-0	RUBBUR RING 24		1			
027	324757-2	COLLAR SLEEVE 20		1			
028	233949-1	RING SPRING 44		1			
029	257282-7	RING 47		1			
030	267287-9	FLAT WASHER 57		1			
031	262122-6	URETAHNE RING 57		1			
032	267287-9	FLAT WASHER 57		1			
033	256265-4	PIN 10		4			
034	324741-7	TOOL HOLDER B		1			
035	419776-2	LOCK SLEEVE		1			
036	213654-6	O RING 60		1			
037	165459-9	RINK ARM		1			
038	419775-4	LINK ARM GUIDE		1			
039	424024-6	SEAL PLATE		2			
040	313138-5	DRIVING SLEEVE		1			
041	419780-1	SLIDE SLEEVE		1	*		
041-1	419780-1	SLIDE SLEEVE	<	1			
042	419772-0	CONECTING ROD		1	*		

042-1	451516-2	CONECTING ROD	S	1		
043	213460-9	O RING 35		1		
044	419771-2	PISTON		1		
045	268121-6	PIN 12		1		
046	213482-9	O RING 34		1	*	
046-1	213296-6	O-RING 34	S	1		
047	213510-0	O RING 36		3		
048	331748-6	CYLINDER 40		1		
049	213482-9	O RING 34		1	*	
049-1	213296-6	O-RING 34	S	1		
050	324754-8	STRIKER		1		
051	227511-2	STRAIGHT BEVEL GEAR 33		1		
052	233498-8	COMPRESSION SPRING 46		1		
053	257281-9	RING 45		1		
054	213118-0	O RING 12		2		
055	318124-1	PIPE HOLDER		2		
056	213118-0	O RING 12		2		
057	419773-8	SPRING GUIDE		2		
058	233497-0	COMPRESSION SPRING 15		2		
059	213953-6	O RING 24		2		
060	331745-2	PIPE 22		2		
061	213953-6	O RING 24		2		
062	324755-6	COUNTER WEIGHT		2	*	
062-1	324755-6	COUNTER WEIGHT	O	2		
063	233497-0	COMPRESSION SPRING 15		2		
064	419773-8	SPRING GUIDE		2		
065	213118-0	O RING 12		2		
066	318124-1	PIPE HOLDER		2		
067	213118-0	O RING 12		2		
068	922361-7	HEX. SOCKET HEAD BOLT M6X40		4		
069	266192-7	TAPPING SCREW 4X14		1		
070	419020-7	CHANGE LEVER		1		
071	233436-0	COMPRESSION SPRING 3		2		
072	419777-0	LOCK BUTTON		1		
073	419784-3	CRANK LEVER		1	*	
073-1	450687-2	CRANK LEVER	S	1		
074	213515-0	O RING 36		1	*	
074-1	213534-6	O RING 36	<	1		
075	233506-5	TORSION SPRING 16		1		
076	310207-3	LINK LEVER		1		
077	345778-1	RETAINER PLATE		1		
078	266020-6	TAPPING SCREW 4X12		1	*	
078-1	265014-8	+ PAN HEAD SCREW M4X12	S	1		
079	318130-6	CRANK CAP COVER		1		
080	266192-7	TAPPING SCREW 4X14		2		
081	911133-5	PAN HEAD SCREW M4X18		6		
082	419789-3	CRANK CAP		1		
083	421998-2	SEAL RING		1		
084	345779-9	LINK PLATE		1		
085	419781-9	LINK PLATE GUIDE		1		
086	158176-8	CRANK HOUSING COMPLETE		1		
087	419008-7	FIX GUIDE		2		

088	423366-5	CUSHION PLATE		1		
089	324739-4	CRANK SHAFT		1		
090	211418-2	BALL BEARING 6006LLU		1		
091	254229-2	KEY 5		2		
092	226646-6	HELICAL GEAR 47		1		
093	227176-0	SPUR GEAR 24		1		
094	961102-6	RETAINING RING S-22		1		
095	253843-1	FLAT WASHER 12		1		
096	421999-0	SEAL RING		1		
097	158178-4	GEAR HOUSING COMPLETE		1		
098	922341-3	HEX. SOCKET HEAD BOLT M6X25		2		
099	125374-9	TORQUE LIMITER ASS'Y		1		
100	419796-6	HANDLE COVER		1		
101	265995-6	TAPPING SCREW 4X18		1		
102	650567-4	SWITCH TG73B-1		1	*	
102-1	650676-9	SWITCH C3PA-1111	<	1		
103	154626-1	SWITCH HOLDER COMPLETE		1		
104	419028-1	SWITCH LEVER		1		
107	266041-8	TAPPING SCREW 5X25		6		
108	419800-1	HANDLE		1		
111	863365-9	HR5210C NAME PLATE		1		
117	419793-2	CRANK HOUSING COVER		1		
118	631727-7	CONTROLLER		1		
119	266192-7	TAPPING SCREW 4X14		1	*	
119-1	266901-4	TAPPING SCREW 4X14	<	1		
120	638510-3	LEAD UNIT		1		
121	687169-3	STRAIN RELIEF		1		
122	266192-7	TAPPING SCREW 4X14		1		
123	419024-9	CORD CLAMP BASE		1		
124	265995-6	TAPPING SCREW 4X18		4		
125	266192-7	TAPPING SCREW 4X14		1	*	
125-1	266901-4	TAPPING SCREW 4X14	<	1		
126	419774-6	LENS		1		
127	682560-0	CORD GUARD 10		1		
128	695123-3	POWER SUPPLY CORD 1.5-2-4.0		1	*	
128-1	665638-4	POWER SUPPLY CORD 1.5-2-4.0	O	1	*	
128-2	695123-3	POWER SUPPLY CORD 1.5-2-4.0	O	1		
129	266041-8	TAPPING SCREW 5X25		3		
130	419790-8	REAR COVER		1		
131	252178-7	HEX. NUT M8-12		1		
132	253165-9	FLAT WASHER 8		1		
133	240016-5	FAN 90		1		
134	419782-7	FAN GUIDE		1		
135	194412-8	CARBON BRUSH CB-171		1	*	
135-1	195844-2	CARBON BRUSH CB-175	O	1		
136	638447-4	BRUSH HOLDER UNIT		1	*	
136-1	632D00-2	BRUSH HOLDER UNIT	<	1		
137	419795-8	MOTOR HOUSING		1		
138	636303-2	FIELD 220-240V		1		
139	266095-5	TAPPING SCREW 5X55		2		
140	210059-1	BALL BEARING 6000DDW		1		

141	681642-5	INSULATION WASHER		1		
142	516993-6	ARMATURE ASS'Y 220-240V		1		
D10		INC. 140,141,145				
143	267025-9	FLAT WASHER 15		1		
144	211238-4	BALL BEARING 6202LLU		1		
145	331596-3	SLEEVE 12		1		
146	213231-4	OIL SEAL 15		1		
147	419788-5	BAFFLE PLATE		1		
148	266192-7	TAPPING SCREW 4X14		1		
149	419786-9	SWITCH BOX		1		
150	263027-3	RUBBER PIN 4		1		
151	651418-4	SWITCH ST115A-40		1	*	
151-1	651418-4	SWITCH ST115A-40	O	1		
152	232209-8	LEAF SPRING		1		
153	154635-0	SLIDE LEVER COMPLETE		1		
154	419785-1	CONTROL PLATE		1		
155	819362-3	CLEAR LABEL		1	*	
155-1	819362-3	CLEAR LABEL		1		
A01	158131-0	GRIP 36 COMPLETE		1		
A02	158275-6	PLASTIC CARRYING CASE COMPLE TE		1	*	
C10	163467-4	LATCH		2	*	
C20	816880-2	INDICATION LABEL		1	*	
A02-1	140823-5	PLASTIC CARRYING CASE COMPLE TE	O	1	*	
C10	892399-5	INDICATION LABEL		1	*	
A02-2	140767-9	PLASTIC CARRYING CASE COMPLE TE	O	1	*	
C10	892399-5	INDICATION LABEL		1	*	
C20	162271-8	LATCH		2	*	
A02-3	196187-5	PLASTIC CASE SET	O	1	*	
C10	892399-5	INDICATION LABEL		1	*	
C20	162271-8	LATCH		2	*	
A02-4	196186-7	PLASTIC CASE SET	O	1		
C10	892399-5	INDICATION LABEL		1		
C20	162271-8	LATCH		2		
A03	181573-3	GREASE VESSEL 93G		1	*	
C10	817105-7	CAUTION LABEL		1	*	
A03-1	194683-7	GREASE VESSEL SET	O	1		
A04	134885-3	SIDE HANDLE ASS'Y		1	*	
C10	252640-2	WING NUT M8		1	*	
C20	265439-6	HEX. BOLT M8X150		1	*	
C30	317223-6	SIDE HANDLE BASE 82A		1	*	
C40	317224-4	SIDE HANDLE BASE 82B		1	*	
C50	417002-3	SIDE HANDLE CAM		2	*	
C60	417003-1	SIDE HANDLE		1	*	
C70	951166-8	SPRING PIN 5-24		1	*	
A04-1	135269-8	SIDE HANDLE 82 ASS'Y	O	1		
C10	252640-2	WING NUT M8		1		
C20	265439-6	HEX. BOLT M8X150		1		
C30	318505-9	SIDE HANDLE BASE 82A		1		
C40	318506-7	SIDE HANDLE BASE 82B		1		

C50	417002-3	SIDE HANDLE CAM		2		
C60	417003-1	SIDE HANDLE		1		
C70	951166-8	SPRING PIN 5-24		1		
A05	265701-9	THUMB SCREW M6X14		1		
A06	266163-4	CUP SQUARE NECK BOLT M8X80		1		
A07	321248-4	DEPTH GAUGE		1		
A08	344492-6	PLATE		1		
A09	345780-4	GRIP SPRING 82		1		
A10	419792-4	SIDE GRIP BASE 82		1		
A11	443122-7	CLOTH		1		
A12	931302-2	HEX. NUT M6		1		
A13	805250-0	HR5210C MODEL NO.LABEL		1	*	
A13-1	892064-6	HR5210C PLASTIC CASE LABEL	X	2		
A14	135380-6	GRIP 36 ASSY		1		
D10		INC. A01,A05-A10,A12				
F03-1	199143-4	DUST EXTRACTOR ATT SET(EU)	<	1		
F04-1	199143-4	DUST EXTRACTOR ATT SET(EU)	<	1		
F06-1	199144-2	DUST EXTRACTOR ATT SET(EU)	<	1		
C10	417765-1	FRONT CUFF 22		1		
C20	417766-9	FRONT CUFF 38		1		
C30	415021-3	HOSE JOINT		1		
F07-1	199144-2	DUST EXTRACTOR ATT SET(EU)	<	1		
C10	417765-1	FRONT CUFF 22		1		
C20	417766-9	FRONT CUFF 38		1		
C30	415021-3	HOSE JOINT		1		

Please state Parts No. when your order.

Print Date 20.11.2023