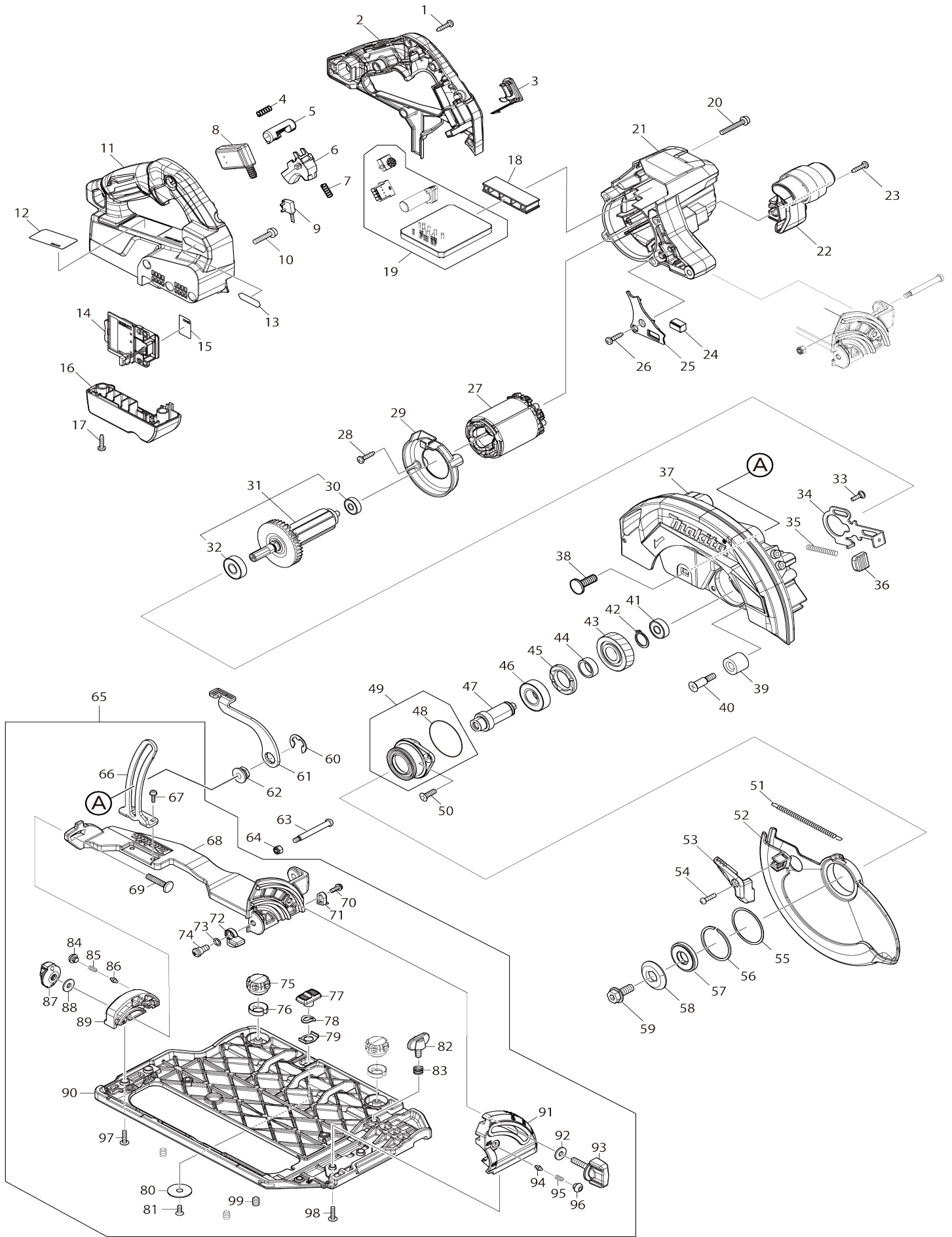


Model No.HS004G 185MM CORDLESS CIRCULAR SAW



Model No.HS004G 185MM CORDLESS CIRCULAR SAW

Item No.	Parts No.	Description	Interchangability	Q'ty	New/Old	Note1	Note2
001	266326-2	TAPPING SCREW 4X18		6			
002	183R15-1	HANDLE SET		1			
C10	263005-3	RUBBER PIN 6		1			
D10		INC. 11					
003	140F99-0	CAP COMPLETE		1			
C10	213218-6	O RING 16		1	*		
C11	213A05-9	O-RING16	O	1			
C20	818H07-8	CAP LABEL		1			
004	231433-0	COMPRESSION SPRING 4		1			
005	419704-7	LOCK OFF BUTTON		1			
006	458594-3	SWITCH LEVER		1			
007	231433-0	COMPRESSION SPRING 4		1			
008	651083-9	SWITCH C3XA-1PSPM		1			
009	632M92-5	SWITCH UNIT		1			
010	911243-8	PAN HEAD SCREW M5X25		3			
011	183R15-1	HANDLE SET		1			
C10	263005-3	RUBBER PIN 6		1			
D10		INC. 2					
012	857E51-2	HS004G NAME PLATE		1			
013	8012U4-2	XGT LOGO LABEL		1			
014	632P65-6	TERMINAL UNIT		1			
015	857E58-8	HS004G SERIAL NO. LABEL		1			
016	140S46-9	TERMINAL HOUSING COMPLETE		1			
C10	263005-3	RUBBER PIN 6		1			
017	266326-2	TAPPING SCREW 4X18		2			
018	412480-2	SPACER		1			
019	620D01-2	CONTROLLER		1	*		
019-1	620L81-6	CONTROLLER	S	1			
020	911258-5	PAN HEAD SCREW M5X35		4			
021	458746-6	MOTOR HOUSING		1			
022	458750-5	FRONT GRIP		1			
023	266326-2	TAPPING SCREW 4X18		1			
024	620936-3	LED CIRCUIT		1			
025	458751-3	LIGHT COVER		1			
026	266326-2	TAPPING SCREW 4X18		1			
027	629479-2	STATOR		1	*		
027-1	629C02-1	STATOR	S	1			
028	266326-2	TAPPING SCREW 4X18		2			
029	458749-0	BAFFLE PLATE		1			
030	210022-4	BALL BEARING 626DDW		1			
031	519534-7	ROTOR ASSY		1			
D10		INC. 30,32					
032	210059-1	BALL BEARING 6000DDW		1			
033	251529-1	+ PAN HEAD SCREW M4X14		1			
034	347676-5	SHAFT LOCK		1			
035	233084-5	COMPRESSION SPRING 6		1			
036	286039-9	CAP		1			

037	140S42-7	BLADE CASE COMPLETE		1		
C10	213434-0	O RING 26		1		
C20	263005-3	RUBBER PIN 6		1		
C30	818C45-0	SCALE LABEL		1		
038	266396-1	FLATHEAD SQUARENECKBOLT M 8X24		1		
039	262185-2	RUBBER SLEEVE8		1		
040	251572-0	+ COUNTERSUNK HEAD SCREW M6X30		1		
041	210029-0	BALL BEARING 608ZZ		1		
042	961057-5	RETAINING RING S-17		1		
043	226838-7	HELICAL GEAR 37		1		
044	257451-0	RING 17		1		
045	285809-3	BEARING RETAINER 23-36		1		
046	210301-0	BALL BEARING 6003DDW		1		
047	327192-3	SPINDLE		1		
048	213565-5	O RING 42		1		
049	136021-7	BEARING BOX ASSY		1		
D10		INC. 48				
050	265034-2	+ COUNTERSUNK HEAD SCREW M5X16		2		
051	232467-6	TENSION SPRING 4		1		
052	319970-5	SAFETY COVER		1		
053	271450-8	LEVER 37		1		
054	265178-8	PAN HEAD SCREW M4X16		1		
055	267337-0	FLAT WASHER 40		1		
056	257452-8	RETAINING RING (EXT) WR-40		1		
057	224593-5	INNER FLANGE 35		1		
058	224409-4	OUTER FLANGE 35		1		
059	266283-4	HEX. SOCKET HEX. BOLT M8X20		1		
060	257953-6	BOW STOP RING E-12		1		
061	271460-5	LEVER 90		1		
062	252262-8	COLLERED HEX. NUT M8		1		
063	265118-6	+ PAN HEAD SCREW M5		1		
064	252103-8	HEX. LOCK NUT M5-8		1		
065	136280-3	BASE ASSY		1		
D10		INC. 66-99				
066	347532-9	DEPTH GUIDE		1		
067	911516-9	PAN HEAD SCREW M4X12		2		
068	319975-5	FRAME		1		
069	251920-3	CAP SQUARE NECK BOLT M6X30		1		
070	911118-1	PAN HEAD SCREW M4X12		1		
071	419632-6	POSITION PLATE		1		
072	319978-9	STOPPER		1		
073	213026-5	O RING 7		1		
074	251267-5	+ PAN HEAD SCREW M6		1		
075	265775-0	THUMB SCREW M4X3		2		
076	419627-9	HOLDER		2		
077	458092-7	SLIDE LEVER		1		
078	253932-2	WAVE WASHER 10		1		
079	345977-5	PLATE		1		
080	345748-0	LOCK WASHER		1		

081	912112-6	COUNTERSUNK HEAD SCREW M4 X10		1		
082	265701-9	THUMB SCREW M6X14		1		
083	233376-2	COMPRESSION SPRING 8		1		
084	266559-9	H.S.BUTTON HEAD BOLT M6X4		1		
085	231234-6	COMPRESSION SPRING 3.5		1		
086	263041-9	SHOULDER PIN 3-5		1		
087	252270-9	THUMB NUT M6		1		
088	253111-2	FLAT WASHER 6		1		
089	319977-1	REAR ANGULAR PLATE		1		
090	319974-7	BASE		1		
091	319976-3	FRONT ANGULAR PLATE		1		
092	253111-2	FLAT WASHER 6		1		
093	265776-8	THUMB SCREW M6X26		1		
094	263041-9	SHOULDER PIN 3-5		1		
095	231234-6	COMPRESSION SPRING 3.5		1		
096	266559-9	H.S.BUTTON HEAD BOLT M6X4		1		
097	265174-6	+ TRUSS HEAD SCREW M4X16		2		
098	265174-6	+ TRUSS HEAD SCREW M4X16		2		
099	266225-8	H.S.SET SCREW(FLAT POINT)M6X 8		3		
100	620K37-3	CONTROLLER B	S	1		
101	652119-7	PAN HEAD SCREW M2X6	S	6		
A01	196520-1	DUST NOZZLE SET		1		
A02	B-64185	TCT BLADE190X24T WOOD EFFIC UT		1		
A03	783204-6	HEX. WRENCH 6		1		
A14	164095-8	GUIDE RULE		1		
F02	194367-7	GUIDE RAIL 3000 SET		1		
F03	194368-5	GUIDE RAIL 1400 SET		1		
F05	194416-0	SHEET 10000 SET		1		
F06	194417-8	RUBBER SHEET 10000 SET		1		
F07	194418-6	POSITION SHEET 1400 SET		1		
F09	194910-2	POSITION SHEET 1900 SET		1		
F11	194925-9	GUIDE RAIL 1900 SET		1		
F13	196664-7	BEVEL GUIDE SET		1		
F14-2	198900-7	WIRELESS UNIT SET	<	1		
F16	199140-0	GUIDE RAIL 1000 SET		1		
F17	199141-8	GUIDE RAIL 1500 SET		1		
F18	199386-8	HOOK SET		1		
F28	1913K7-3	PARALLEL GUIDE SET(MM)		1		
A07	412393-7	BATTERY COVER		2		
A08	191B26-6	BATTERY BL4040 SET		2		
A09	***DC40RA	DC40RA FAST CHARGER		1		
D10		COMPO-PARTS				
A10	821552-6	CONNECTOR PLASTIC CASE (TYP E4)		1		
C10	453974-8	LATCH		4		
A11	8015M0-2	HS004GM201 INDICATION LABEL		1		
A12	8015M1-0	HS004GM201 PLASTIC CASE LABEL		2		
A13	835K82-7	INNER TRAY		1		

Please state Parts No. when your order.

Print Date 10/25/2023