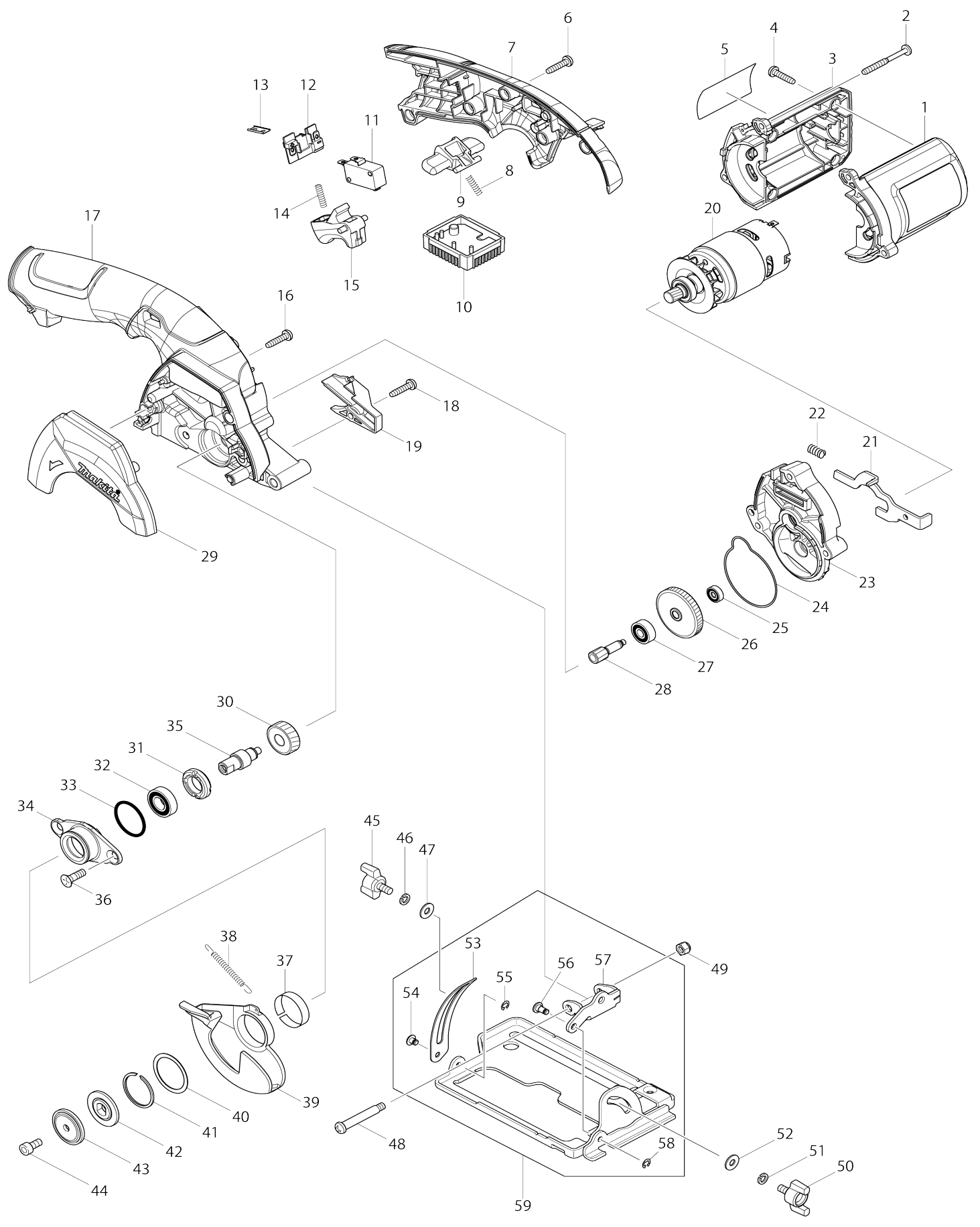


Model No.HS300D 85MM CORDLESS CIRCULAR SAW



Model No.HS300D 85MM CORDLESS CIRCULAR SAW

Item No.	Parts No.	Description	Interchangeability	Q'ty	New/Old	Note1	Note2
001	188941-1	MOTOR HOUSING SET		1			
D10		INC. 3					
002	266560-4	TAPPING SCREW 4X40		3			
003	188941-1	MOTOR HOUSING SET		1			
D10		INC. 1					
004	265995-6	TAPPING SCREW 4X18		4			
005	868568-0	HS300D NAME PLATE		1			
006	265995-6	TAPPING SCREW 4X18		5			
007	188966-5	HANDLE SET		1			
C10	263002-9	RUBBER PIN 4		1			
C20	263005-3	RUBBER PIN 6		1			
D10		INC. 17					
008	231469-9	COMPRESSION SPRING 4		1			
009	419664-3	LOCK OFF LEVER		1			
010	539192-3	CONTROLLER ASSY		1	*		
C10	688161-2	LINE FILTER		1	*		
010-1	638867-2	CONTROLLER UNIT	O	1	*		
C10	688161-2	LINE FILTER		1	*		
010-2	632L88-0	CONTROLLER UNIT	<	1			
C10	688161-2	LINE FILTER		1			
011	651891-8	SWITCH V-15-3A6		1			
012	643830-2	TERMINAL		1			
013	345998-7	SET PLATE		1			
014	231469-9	COMPRESSION SPRING 4		1			
015	419665-1	SWITCH LEVER		1			
016	265995-6	TAPPING SCREW 4X18		2			
017	188966-5	HANDLE SET		1			
C10	263002-9	RUBBER PIN 4		1			
C20	263005-3	RUBBER PIN 6		1			
D10		INC. 7					
018	265995-6	TAPPING SCREW 4X18		1			
019	452234-5	DUCT		1			
020	629885-1	DC MOTOR		1			
021	346337-4	SHAFT LOCK		1			
022	233117-6	COMPRESSION SPRING 6		1			
023	140625-9	GEAR HOUSING COMPLETE		1			
C10	213325-5	O RING 19		1			
024	424358-7	PACKING		1			
025	210036-3	BALL BEARING 604ZZ		1			
026	227737-6	HELICAL GEAR 47		1			
027	210028-2	BALL BEARING 606ZZ		1			
028	227735-0	HELICAL GEAR 9B		1			
029	452243-4	BLADE COVER		1			
030	227736-8	HELICAL GEAR 28		1			
031	285847-5	BEARING RETAINER 14-23		1			
032	210069-8	BALL BEARING 6900DDW		1	*		
032-1	210258-5	BALL BEARING 6900DDW	>	1			

033	213435-8	O RING 26		1		
034	318660-7	BEARING BOX		1		
035	325983-6	SPINDLE		1		
036	265034-2	+ COUNTERSUNK HEAD SCREW M5X16		2		
037	345470-9	THICKNESS RING		1		
038	231867-7	TENSION SPRING 4		1		
039	452236-1	SAFETY COVER		1		
040	267127-1	FLAT WASHER 26		1		
041	257938-2	RETAINING RING(EXT) WR-26		1		
042	224435-3	INNER FLANGE 28		1		
043	224177-9	OUTER FLANGE 28		1		
044	922212-4	HEX. SOCKET HEAD BOLT M5X12		1		
045	265760-3	THUMB SCREW M5X10		1		
046	942101-7	SPRING WASHER 5		1	*	
046-1	253427-5	SPRING WASHER 5	O	1	*	
047	941101-4	FLAT WASHER 5		1		
048	265056-2	+ PAN HEAD SCREW M5		1		
049	252103-8	HEX. LOCK NUT M5-8		1		
050	265760-3	THUMB SCREW M5X10		1		
051	942101-7	SPRING WASHER 5		1	*	
051-1	253427-5	SPRING WASHER 5	O	1	*	
052	941101-4	FLAT WASHER 5		1		
053	346338-2	DEPTH GUIDE		1		
054	268004-0	PIN 4		1		
055	961017-7	STOP RING E-3		1		
056	268028-6	PIN 5		1		
057	346339-0	ANGULAR GUIDE		1		
058	961017-7	STOP RING E-3		1		
059	135416-1	BASE ASSEMBLY		1		
D10		INC. 53-58				
A01	783202-0	HEX. WRENCH 4		1		
A02	B-14607	T.C.T. SAW BLADE 85X15X20T		1		
A03	452237-9	DUST NOZZLE		1		
A04	911128-8	P.H.SCREW M4X16 WITH WR		1		
A03	***DC10WA	DC10WA BATTERY CHARGER		1		
A04	194550-6	BATTERY BL1013 SET		2	*	
A04-1	196066-7	BATTERY BL1013 SET	O	2		
A05	824961-8	PLASTIC CARRYING CASE		1		
C10	163455-1	LATCH		2		
C20	419360-3	HANDLE		1		
A06	891751-4	HS300DWE PLASTIC CASE LABEL		2		
A07	452237-9	DUST NOZZLE		1		
A08	911128-8	P.H.SCREW M4X16 WITH WR		1		
A05	***DC10WA	DC10WA BATTERY CHARGER		1		
A06	194550-6	BATTERY BL1013 SET		2	*	
A06-1	196066-7	BATTERY BL1013 SET	O	2		
A07	821550-0	CONNECTOR PLASTIC CASE (TYP E2)		1	*	
C10	453974-8	LATCH		4	*	
A07-1	821550-0	CONNECTOR PLASTIC CASE (TYP E2)	<	1		

C10	453974-8	LATCH		4			
A08	837662-9	INNER TRAY		1			
A09	800Y00-8	HS300DWJ INDICATION LABEL		1			
A10	800Y01-6	HS300DWJ PLASTIC CASE LABEL		2			

Please state Parts No. when your order.

Print Date 25.10.2023