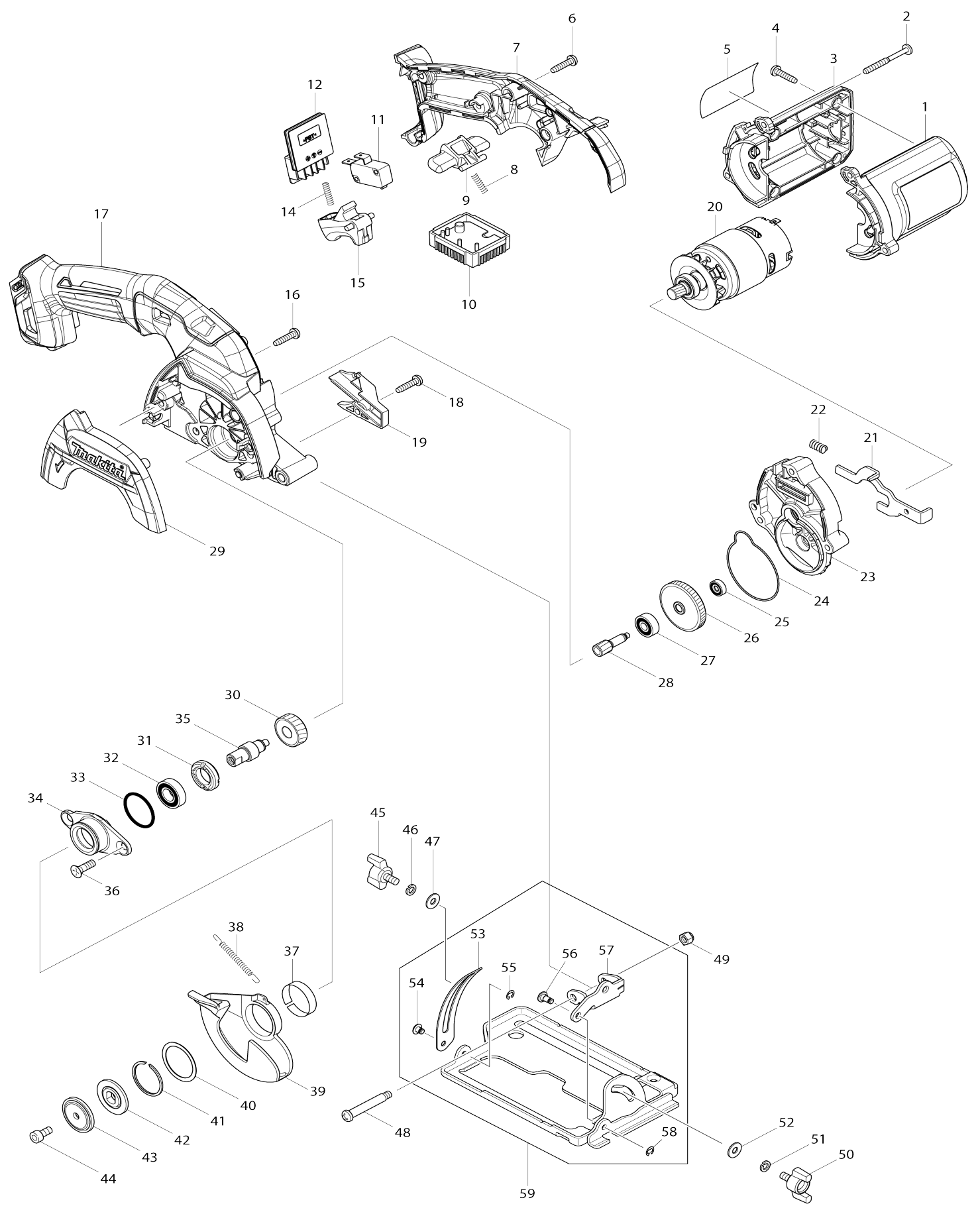


# Model No.HS301D 85MM CORDLESS CIRCULAR SAW



Model No.HS301D 85MM CORDLESS CIRCULAR SAW

Item No.	Parts No.	Description	Interchangeability	Q'ty	New/Old	Note1	Note2
001	188941-1	MOTOR HOUSING SET		1			
D10		INC. 3					
002	266560-4	TAPPING SCREW 4X40		3			
003	188941-1	MOTOR HOUSING SET		1			
D10		INC. 1					
004	265995-6	TAPPING SCREW 4X18		4			
005	851M09-1	HS301D NAME PLATE		1	*		
005-1	851M08-3	HS301D NAME PLATE	<	1			
006	265995-6	TAPPING SCREW 4X18		6			
007	183C54-1	HANDLE SET		1			
C10	263002-9	RUBBER PIN 4		3			
C20	263005-3	RUBBER PIN 6		1			
C30	931102-0	HEX. NUT M4		1			
C40	931202-6	HEX. NUT M5		3			
D10		INC. 17					
008	231469-9	COMPRESSION SPRING 4		1			
009	419664-3	LOCK OFF LEVER		1			
010	632F49-4	CONTROLLER UNIT		1	*		
C10	688161-2	LINE FILTER		1	*		
C20	688165-4	LINE FILTER		1	*		
010-1	632L90-3	CONTROLLER UNIT	<	1			
C10	688161-2	LINE FILTER		1			
C20	688165-4	LINE FILTER		1			
C30	654086-2	RECEPTACLE		2			
011	650577-1	SWITCH SD-006-BB2AA-AA		1			
012	644813-5	TERMINAL		1			
014	231469-9	COMPRESSION SPRING 4		1			
015	419665-1	SWITCH LEVER		1			
016	265995-6	TAPPING SCREW 4X18		2			
017	183C54-1	HANDLE SET		1			
C10	263002-9	RUBBER PIN 4		3			
C20	263005-3	RUBBER PIN 6		1			
C30	931102-0	HEX. NUT M4		1			
C40	931202-6	HEX. NUT M5		3			
D10		INC. 7					
018	265995-6	TAPPING SCREW 4X18		1			
019	452234-5	DUCT		1			
020	629885-1	DC MOTOR		1			
021	346337-4	SHAFT LOCK		1			
022	233117-6	COMPRESSION SPRING 6		1			
023	140625-9	GEAR HOUSING COMPLETE		1			
C10	213325-5	O RING 19		1			
024	424358-7	PACKING		1			
025	210036-3	BALL BEARING 604ZZ		1			
026	227737-6	HELICAL GEAR 47		1			
027	210028-2	BALL BEARING 606ZZ		1			
028	227735-0	HELICAL GEAR 9B		1			

029	456252-5	BLADE COVER		1		
030	227736-8	HELICAL GEAR 28		1		
031	285847-5	BEARING RETAINER 14-23		1		
032	210069-8	BALL BEARING 6900DDW		1	*	
032-1	210258-5	BALL BEARING 6900DDW	>	1		
033	213435-8	O RING 26		1		
034	318660-7	BEARING BOX		1		
035	325983-6	SPINDLE		1		
036	265034-2	+ COUNTERSUNK HEAD SCREW M5X16		2		
037	345470-9	THICKNESS RING		1		
038	231867-7	TENSION SPRING 4		1		
039	452236-1	SAFETY COVER		1		
040	267127-1	FLAT WASHER 26		1		
041	257938-2	RETAINING RING(EXT) WR-26		1		
042	224435-3	INNER FLANGE 28		1		
043	224177-9	OUTER FLANGE 28		1		
044	922212-4	HEX. SOCKET HEAD BOLT M5X12		1		
045	265760-3	THUMB SCREW M5X10		1		
046	942101-7	SPRING WASHER 5		1	*	
046-1	253427-5	SPRING WASHER 5	O	1	*	
047	941101-4	FLAT WASHER 5		1		
048	265056-2	+ PAN HEAD SCREW M5		1		
049	252103-8	HEX. LOCK NUT M5-8		1		
050	265760-3	THUMB SCREW M5X10		1		
051	942101-7	SPRING WASHER 5		1	*	
051-1	253427-5	SPRING WASHER 5	O	1	*	
052	941101-4	FLAT WASHER 5		1		
053	346338-2	DEPTH GUIDE		1		
054	268004-0	PIN 4		1		
055	961017-7	STOP RING E-3		1		
056	268028-6	PIN 5		1		
057	346339-0	ANGULAR GUIDE		1		
058	961017-7	STOP RING E-3		1		
059	135416-1	BASE ASSEMBLY		1		
D10		INC. 53-58				
A01	783202-0	HEX. WRENCH 4		1		
A02	B-14607	T.C.T. SAW BLADE 85X15X20T		1		
A03	452237-9	DUST NOZZLE		1		
A04	911128-8	P.H.SCREW M4X16 WITH WR		1		
F01	197390-1	BATTERY BL1015 SET		1		
F02	197391-9	BATTERY BL1015 SET		1		
F03	197393-5	BATTERY BL1016 SET		1		
F16	198968-3	BATTERY BL1016 SET		1		
F17	198969-1	BATTERY BL1016 SET (2PIECES)		1		
F18-1	198970-6	BATTERY BL1021B SET (2PIECES)	O	1		
F19-1	199002-2	BATTERY BL1041B SET (2PIECES)	O	1		
A05	456128-6	BATTERY COVER		1		
A06	***DC10SA	DC10SA BATTERY CHARGER		1	*	
D10		COMPO-PARTS				
A06-1	***DC10SB	DC10SB BATTERY CHARGER	<	1		
D10		COMPO-PARTS				

A07	197402-0	BATTERY BL1040B SET		2	*		
A07-1	197406-2	BATTERY BL1041B SET	<	2	*		
A07-2	197406-2	BATTERY BL1041B SET	O	2			
A08	821550-0	CONNECTOR PLASTIC CASE (TYPE2)		1			
C10	453974-8	LATCH		4			
A09	838315-3	INNER TRAY		1			
A10	807V42-5	HS301DSMJ INDICATION LABEL		1			
A11	807V43-3	HS301DSMJ PLASTIC CASE LABEL		2			

Please state Parts No. when your order.

Print Date 25.10.2023