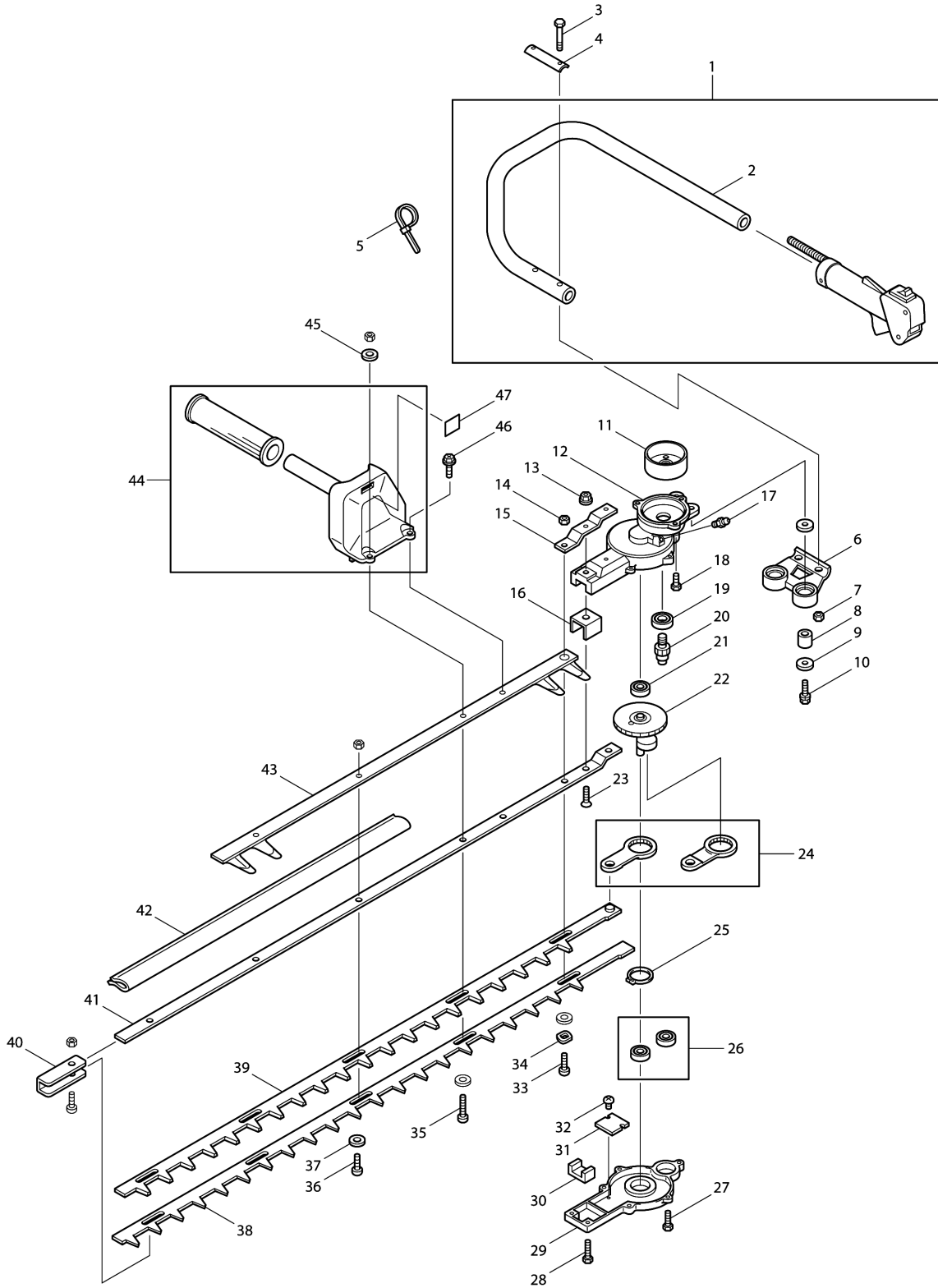
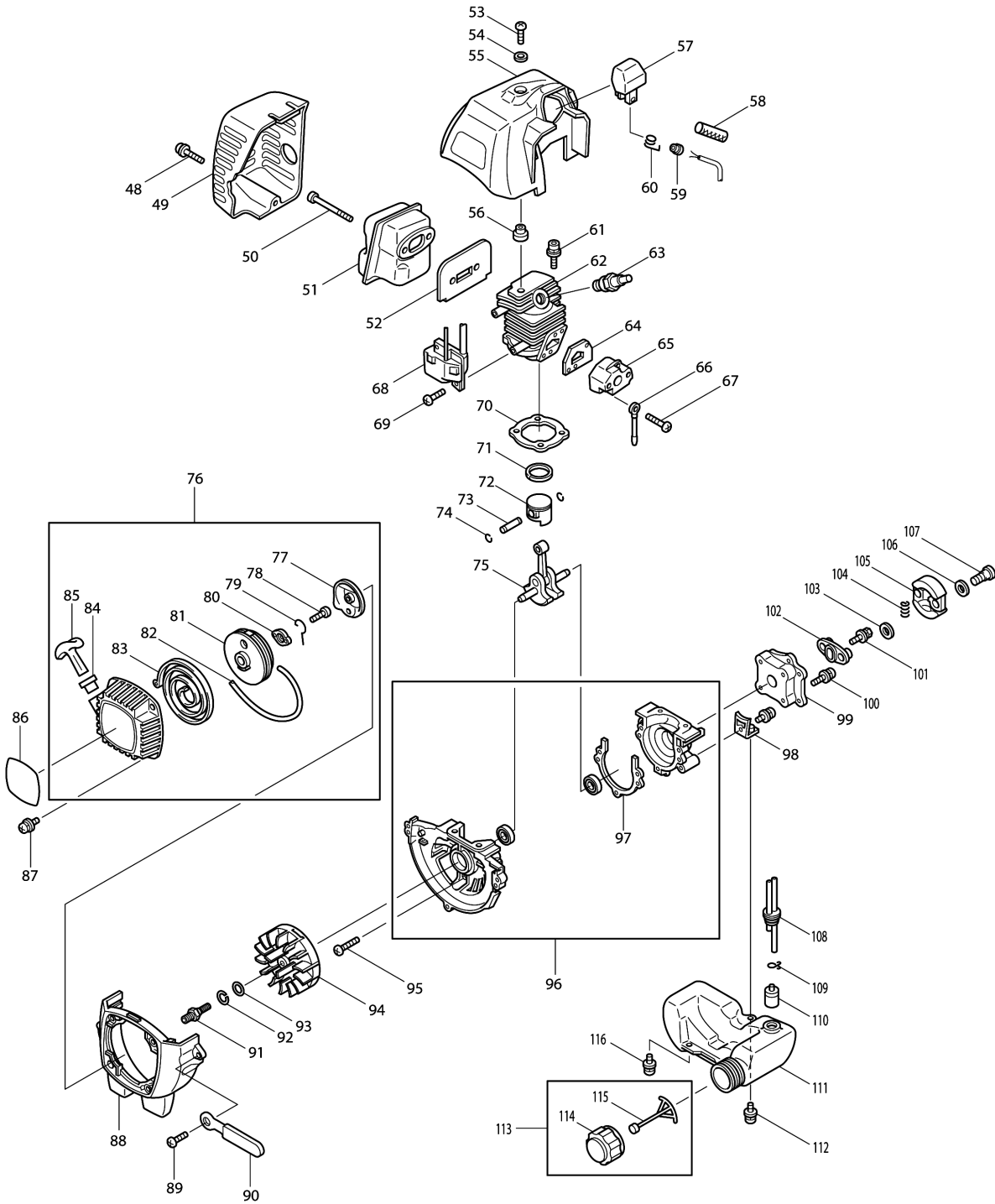


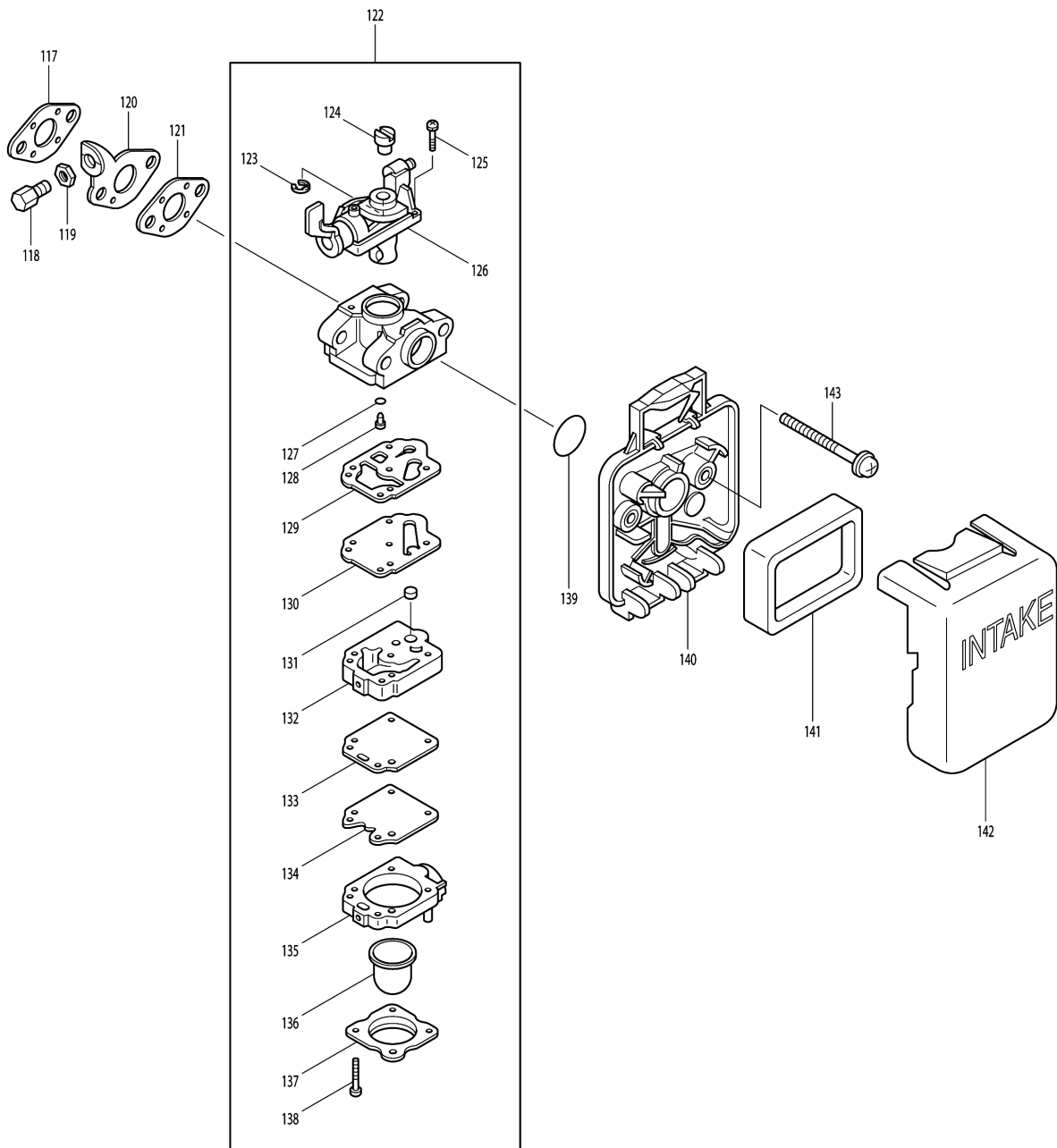
Model No.HTR7610 ENGINE HEDGE TRIMMER



Model No.HTR7610 ENGINE HEDGE TRIMMER



Model No.HTR7610 ENGINE HEDGE TRIMMER



Model No.HTR7610 ENGINE HEDGE TRIMMER

| Item | Parts No. | Description | I/C | Qty | New/Old | Opt. 1 | Opt. 2 | Note |
|-------|------------|--------------------------|-----|-----|---------|--------|--------|------|
| 001 | 0340047000 | CONTROL LEVER ASSY | | 1 | * | | | |
| D10 | | INC. 2 | | | * | | | |
| 001-1 | 034004700R | CONTROL LEVER ASSEMBLY | O | 1 | | | | |
| 002 | 1361490000 | HANDLE (LEFT) | | 1 | | | | |
| 003 | 0040050301 | BOLT M5X30 | | 2 | * | | | |
| 003-1 | L040050283 | BOLT M5X28 | O | 2 | * | | | |
| 003-2 | 040050283L | HEX BOLT M5X28 | O | 2 | | | | |
| 004 | 1361030000 | HANDLE FITTING | | 1 | | | | |
| 005 | 0035002100 | CORD BINDER | | 1 | * | | | |
| 005-1 | 035002100R | CLIP (CV-150) | O | 1 | | | | |
| 006 | 1361000000 | HANDLE HOLDER | | 1 | | | | |
| 007 | 0150050000 | NUT M5 | | 2 | * | | | |
| 007-1 | 150050000K | HEX. NUT M5 | O | 2 | | | | |
| 008 | 1361020000 | ANTI-VIBRATION RUBBER | | 4 | | | | |
| 009 | 1361040000 | FITTING RUBBER | | 2 | | | | |
| 010 | 0054060350 | BOLT M6X35 | | 2 | * | | | |
| 010-1 | 054060350K | BOLT M6X35 (W/SW) | O | 2 | | | | |
| 011 | 1361410000 | DRUM COMPLETE | | 1 | | | | |
| 012 | 0326100002 | UPPER CASE | | 1 | * | | | |
| 012-1 | 326100002A | CRANK CASE (UPPER) | O | 1 | | | | |
| 013 | 0162050000 | FLANGE NUT M5 | | 2 | * | | | |
| 013-1 | 162050000K | FLANGE NUT M5 | O | 2 | | | | |
| 014 | 0164060000 | U-NUT M6 | | 5 | * | | | |
| 014-1 | 164060000K | HEX. U-NUT M6 | O | 5 | | | | |
| 015 | 0325102004 | PLATE | | 1 | * | | | |
| 015-1 | 3251020040 | REINFORCING PLATE | O | 1 | | | | |
| 016 | 0325103004 | PLATE | | 1 | * | | | |
| 016-1 | 3251030040 | SLIGHTLY STOPPER | O | 1 | | | | |
| 017 | 0055000100 | GREASE NIPPLE M6 | | 1 | * | | | |
| 017-1 | 055000100R | GREASING NIPPLE | O | 1 | | | | |
| 018 | 0054060160 | BOLT M6X16 | | 3 | * | | | |
| 018-1 | 054060160K | +HEX. BOLT M6X16 WITH WG | O | 3 | | | | |
| 019 | 0354060010 | BALL BEARING UU 6001 | | 1 | * | | | |
| 019-1 | 354060010K | BALL BEARING 6001 2RS | O | 1 | | | | |
| 020 | 1361420000 | PINION GEAR | | 1 | | | | |
| 021 | 0353006080 | BALL BEARING ZZ 608 | | 1 | * | | | |
| 021-1 | 353006080K | BEARING 608ZZ | O | 1 | | | | |
| 022 | 1360030000 | GEAR CRANK ASS'Y | | 1 | | | | |
| 023 | 0011050205 | SCREW M5X20 | | 2 | * | | | |
| 023-1 | 011050205K | SCREW M5X20 | O | 2 | | | | |
| 024 | 1181000000 | ROD | | 2 | * | | | |
| 024-1 | TE1A044000 | ROD | O | 2 | * | | | |
| 024-2 | 1A044000TE | ROD | O | 2 | * | | | |
| 024-3 | XOC0000018 | ROD | O | 2 | | | | |
| 025 | 0283026000 | SNAP RING | | 1 | * | | | |

Please order the parts with part number.

Print Date 25/10/2023

Model No.HTR7610 ENGINE HEDGE TRIMMER

| Item | Parts No. | Description | I/C | Qty | New/Old | Opt. 1 | Opt. 2 | Note |
|-------|------------|------------------------|-----|-----|---------|--------|--------|------|
| 025-1 | 283026000K | RETAINING RING STW-26 | O | 1 | | | | |
| 026 | 0353006080 | BALL BEARING ZZ 608 | | 2 | * | | | |
| 026-1 | 353006080K | BEARING 608ZZ | O | 2 | | | | |
| 027 | 0054050160 | BOLT M5X16(W,SW) | | 5 | * | | | |
| 027-1 | 054050160K | (+)HEX. BOLT M5X16 | O | 5 | | | | |
| 028 | 0054050160 | BOLT M5X16(W,SW) | | 2 | * | | | |
| 028-1 | 054050160K | (+)HEX. BOLT M5X16 | O | 2 | | | | |
| 029 | 0325101002 | LOWER CASE | | 1 | * | | | |
| 029-1 | 3251010020 | CASE (LOWER) | O | 1 | | | | |
| 030 | 0325104004 | FELT | | 1 | * | | | |
| 030-1 | 3251040040 | FELT | O | 1 | | | | |
| 031 | 0301100000 | ROD SLIDING PLATE | | 1 | | | | |
| 032 | 0010030050 | SCREW M3X5 | | 2 | * | | | |
| 032-1 | 010030050K | (+)PAN HEAD SCREW M3X5 | O | 2 | | | | |
| 033 | 0040003009 | SCREW M6X22 | | 2 | * | | | |
| 033-1 | 040003009A | SCREW M6X22 | O | 2 | | | | |
| 034 | 0229060000 | WAVE WASHER | | 1 | * | | | |
| 034-1 | 229060000K | WAVE WASHER | O | 1 | | | | |
| 035 | 0040004009 | SCREW | | 1 | * | | | |
| 035-1 | 040004009A | BLADE SLIDE SCREW | O | 1 | | | | |
| 036 | 0040002009 | SCREW L=19 | | 2 | * | | | |
| 036-1 | 040002009A | BLADE SLIDE SCREW L19 | O | 2 | | | | |
| 037 | 0082500000 | BLADE SLIDING WASHER | | 4 | | | | |
| 038 | 6018505301 | BLADE (LOWER) | | 1 | | | | |
| 039 | 6018505200 | BLADE (UPPER) | | 1 | | | | |
| 040 | 0271450000 | END REINFORCER | | 1 | | | | |
| 041 | 1361160000 | GUIDE PLATE | | 1 | | | | |
| 042 | 0028109009 | BLADE COVER | | 1 | * | | | |
| 042-1 | 028109009A | BLADE COVER | O | 1 | | | | |
| 043 | 0286115001 | PROTECTOR | | 1 | * | | | |
| 043-1 | 286115001A | BLADE GUARD | O | 1 | * | | | |
| 043-2 | XOC0000031 | BLADE GUARD | < | 1 | | | | |
| 044 | 0024004000 | RIGHT HANDLE | | 1 | * | | | |
| 044-1 | XOC0000023 | RIGHT HANDLE | O | 1 | | | | |
| 045 | 0207060104 | WASHER M6 | | 1 | * | | | |
| 045-1 | 207060104A | WASHER M6 | O | 1 | | | | |
| 046 | 0055060201 | BOLT M5X20(SW,PW) | | 1 | * | | | |
| 046-1 | 055060201K | BOLT M5X20 (SW, PW) | O | 1 | | | | |
| 047 | 0736359980 | CAUTION LABEL | | 1 | | | | |
| 048 | 0140059290 | SCREW ASSY | | 1 | | | | |
| 049 | 5253500500 | MUFFLER COVER | | 1 | | | | |
| 050 | 0119059550 | SOCKET HEAD BOLT | | 2 | * | | | |
| 050-1 | 266754-1 | SOCKET HEAD BOLT | O | 2 | | | | |
| 051 | 5253071000 | EXHAUST MUFFLER | | 1 | | | | |
| 052 | 5253500102 | MUFFLER GASKET | | 1 | | | | |

Please order the parts with part number.

Print Date 25/10/2023

Model No.HTR7610 ENGINE HEDGE TRIMMER

| Item | Parts No. | Description | I/C | Qty | New/Old | Opt. 1 | Opt. 2 | Note |
|-------|------------|-------------------------------|-----|-----|---------|--------|--------|------|
| 053 | 0140059490 | SCREW | | 1 | | | | |
| 054 | 0200070010 | WASHER | | 1 | | | | |
| 055 | 5255500301 | CYLINDER COVER (MAKITA COLOR) | | 1 | | | | |
| 056 | 5503503001 | SPACER | | 1 | | | | |
| 057 | 5237503301 | PLUG CAP | | 1 | | | | |
| 058 | 0851049950 | TUBE | | 1 | | | | |
| 059 | 5257500300 | GROMMET | | 1 | * | | | |
| 059-1 | 424313-9 | GROMMET | O | 1 | | | | |
| 060 | 0654009931 | PLUG CAP SPRING | | 1 | * | | | |
| 060-1 | 324891-8 | PLUG CAP SPRING | O | 1 | | | | |
| 061 | 0119059730 | SOCKET HEAD BOLT M5X20 | | 2 | * | | | |
| 061-1 | 266814-9 | HEX SOCKET HEAD BOLT M5X20 | O | 2 | | | | |
| 062 | 5251500201 | CYLINDER | | 1 | * | | | |
| 062-1 | 5231501804 | CYLINDER | O | 1 | * | | | |
| 062-2 | 318762-9 | CYLINDER | O | 1 | | | | |
| 063 | 0650149721 | SPARK PLUG | | 1 | * | | | |
| 063-1 | 168662-1 | SPARK PLUG(BMR7A) | O | 1 | | | | |
| 064 | 5253500200 | INSULATOR GASKET | | 1 | | | | |
| 065 | 5233014000 | INSULATOR COMPL. | | 1 | * | | | |
| 065-1 | 141056-5 | INSULATOR COMPLETE | O | 1 | | | | |
| 066 | 6165500201 | WIRE | | 1 | * | | | |
| 066-1 | 638784-6 | WIRE | O | 1 | | | | |
| 067 | 0140059500 | SCREW M5X25 | | 2 | * | | | |
| 067-1 | 266700-4 | PAN HEAD SCREW M5X25 | O | 2 | | | | |
| 068 | 5257001021 | COIL | | 1 | | | | |
| 069 | 0140049920 | SCREW ASS'Y M4X20 | | 2 | | | | |
| 070 | 5231502304 | CYLINDER GASKET | | 1 | * | | | |
| 070-1 | 442171-1 | CYLINDER GASKET | O | 1 | | | | |
| 071 | 5242500701 | PISTON RING | | 1 | * | | | |
| 071-1 | 257979-8 | PISTON RING | O | 1 | | | | |
| 072 | 5232501902 | PISTON | | 1 | | | | |
| 073 | 5232502600 | PISTON PIN | | 1 | * | | | |
| 073-1 | 257781-9 | PISTON PIN | O | 1 | | | | |
| 074 | 0565089970 | CLIP | | 2 | * | | | |
| 074-1 | 233976-8 | CLIP | O | 2 | | | | |
| 075 | 5252002001 | CRANKSHAFT COMPLETE | | 1 | * | | | |
| 075-1 | 5252002002 | CRANKSHAFT COMPLETE | O | 1 | * | | | |
| 075-2 | 144403-9 | CRANK SHAFT COMPLETE | S | 1 | | | | |
| 076 | 5255052000 | REWIND STARTER | | 1 | | | | |
| D10 | | INC. 77-85 | | | | | | |
| 077 | 5255505900 | PULLY | | 1 | | | | |
| 078 | 5195002060 | SET SCREW | | 1 | * | | | |
| 078-1 | 266585-8 | TAPPING SCREW 5X12 | O | 1 | | | | |
| 079 | 5195002100 | SWING ARM | | 1 | * | | | |

Please order the parts with part number.

Print Date 25/10/2023

Model No.HTR7610 ENGINE HEDGE TRIMMER

| Item | Parts No. | Description | I/C | Qty | New/Old | Opt. 1 | Opt. 2 | Note |
|-------|------------|-----------------------------|-----|-----|---------|--------|--------|------|
| 079-1 | 325923-4 | SWING ARM | O | 1 | | | | |
| 080 | 5195002110 | COLLAR | | 1 | * | | | |
| 080-1 | 451938-6 | COLLAR | O | 1 | | | | |
| 081 | 5195002030 | REEL | | 1 | * | | | |
| 081-1 | 452972-9 | REEL | O | 1 | | | | |
| 082 | 5255016020 | STARTER ROPE | | 1 | * | | | |
| 082-1 | 444024-0 | STARTER ROPE | O | 1 | | | | |
| 083 | 5195002050 | SPIRAL SPRING | | 1 | * | | | |
| 083-1 | 234220-6 | SPIRAL SPRING | O | 1 | | | | |
| 084 | 5255001040 | DAMPER | | 1 | * | | | |
| 084-1 | 424359-5 | DAMPER | O | 1 | | | | |
| 085 | 5225004020 | HANDLE | | 1 | * | | | |
| 085-1 | 424319-7 | STARTER KNOB | O | 1 | | | | |
| 086 | 6019509100 | MODEL LABEL | | 1 | | | | |
| 087 | 0140049760 | SCREW ASSEMBLY | | 4 | | | | |
| 088 | 5255505700 | BLOWER HOUSING | | 1 | | | | |
| 089 | 0140059350 | SCREW ASS'Y M5X18(W,SW) | | 3 | * | | | |
| 089-1 | 266699-3 | PAN HEAD SCREW M5X18 | O | 3 | | | | |
| 090 | 0566059980 | CLAMP | | 1 | * | | | |
| 090-1 | 345963-6 | CLAMP | O | 1 | | | | |
| 091 | 5257501400 | BOLT | | 1 | | | | |
| 092 | 0032006000 | SPRING WASHER | | 1 | | | | |
| 093 | 0031206000 | WASHER | | 1 | * | | | |
| 093-1 | 253429-1 | FLAT WASHER 7 | O | 1 | | | | |
| 094 | 5257041010 | FLYWHEEL | | 1 | | | | |
| 095 | 0140059520 | SCREW M5X25 | | 3 | * | | | |
| 095-1 | 266701-2 | PAN HEAD SCREW M5X25 | O | 3 | * | | | |
| 095-2 | 922241-7 | HEX. SOCKET HEAD BOLT M5X25 | O | 3 | | | | |
| 096 | 5251003000 | CRANKCASE COMPLETE | | 1 | | | | |
| D10 | | INC. 97 | | | | | | |
| 097 | 5231502202 | CRANKCASE GASKET | | 1 | * | | | |
| 097-1 | 424447-8 | CRANK CASE GASKET | O | 1 | | | | |
| 098 | 5256002000 | TANK PLATE COMPLETE | | 1 | | | | |
| 099 | 1181240000 | SPACER | | 1 | * | | | |
| 099-1 | 318892-6 | SPACER | O | 1 | | | | |
| 100 | 0140059350 | SCREW ASS'Y M5X18(W,SW) | | 4 | * | | | |
| 100-1 | 266699-3 | PAN HEAD SCREW M5X18 | O | 4 | | | | |
| 101 | 6202006000 | BOLT ASS'Y | | 1 | * | | | |
| 101-1 | 5235504700 | BOLT ASS'Y | O | 1 | * | | | |
| 101-2 | 266703-8 | HEX. HEAD BOLT M6X14 | O | 1 | | | | |
| 102 | 6202500000 | HOLDER | | 1 | | | | |
| 103 | 6202500600 | WASHER | | 2 | * | | | |
| 103-1 | 267429-5 | FLAT WASHER 6 | O | 2 | | | | |
| 104 | 5238500500 | CLUTCH SPRING | | 1 | | | | |
| 105 | 6252500801 | CLUTCH SHOE | | 2 | | | | |

Please order the parts with part number.

Print Date 25/10/2023

Model No.HTR7610 ENGINE HEDGE TRIMMER

| Item | Parts No. | Description | I/C | Qty | New/Old | Opt. 1 | Opt. 2 | Note |
|-------|------------|----------------------------|-----|-----|---------|--------|--------|------|
| 106 | 0200089911 | WASHER M8 | | 2 | * | | | |
| 106-1 | 267817-6 | WASHER 8 | O | 2 | | | | |
| 107 | 6252500400 | CLUTCH BOLT | | 2 | * | | | |
| 107-1 | 266457-7 | SHOULDER HEX. BOLT M6X25 | O | 2 | * | | | |
| 107-2 | 266864-4 | SHOULDER HEX. BOLT M6X25 | O | 2 | | | | |
| 108 | 5256012001 | TUBE ASS'Y | | 1 | | | | |
| 109 | 0561059990 | HOSE CLAMP | | 1 | * | | | |
| 109-1 | 345920-4 | HOSE CLAMP | O | 1 | | | | |
| 110 | 5236503900 | FILTER | | 1 | * | | | |
| 110-1 | 163447-0 | FUEL FILTER | O | 1 | * | | | |
| 110-2 | 163447-0 | FUEL FILTER | O | 1 | | | | |
| 111 | 5256025000 | FUEL TANK COMPLETE | | 1 | | | | |
| 112 | 0140059290 | SCREW ASSY | | 2 | | | | |
| 113 | 5256059000 | FUEL TANK CAP COMPLETE | | 1 | * | | | |
| D10 | | INC. 113,114 | | | * | | | |
| D11 | | INC. 114,115 | | | * | | | |
| 113-1 | 168668-9 | FUEL TANK CAP COMPLETE | O | 1 | | | | |
| D11 | | INC. 114,115 | | | | | | |
| 114 | 5256058000 | FUEL TANK CAP | | 1 | * | | | |
| 114-1 | 452920-8 | FUEL TANK CAP | O | 1 | | | | |
| 115 | 5256067000 | STRAP | | 1 | * | | | |
| 115-1 | 140436-2 | STRAP COMPLETE | O | 1 | | | | |
| 116 | 0150059800 | TAPPING SCREW M5X18 | | 2 | | | | |
| 117 | 5103502801 | SPACER GASKET | | 1 | * | | | |
| 117-1 | 442177-9 | GASKET AIR CLEANER | O | 1 | | | | |
| 118 | 5316020020 | CABLE ADJUST SCREW | | 1 | * | | | |
| 118-1 | 326084-3 | CABLE ADJUST SCREW M6X13 | O | 1 | | | | |
| 119 | 0022706000 | NUT M6 | | 1 | | | | |
| 120 | 5256501900 | CABLE BRACKET | | 1 | | | | |
| 121 | 5103502801 | SPACER GASKET | | 1 | * | | | |
| 121-1 | 442177-9 | GASKET AIR CLEANER | O | 1 | | | | |
| 122 | 5256085000 | CARBURETOR | | 1 | | | | |
| D10 | | INC. 123-138 | | | | | | |
| 123 | 5316005120 | RING | | 1 | * | | | |
| 123-1 | 257964-1 | STOP RING E-3 | O | 1 | | | | |
| 124 | 5236018040 | SWIVEL | | 1 | * | | | |
| 124-1 | 325922-6 | SWIVEL | O | 1 | | | | |
| 125 | 5206008030 | PAN HEAD SCREW | | 2 | * | | | |
| 125-1 | 266581-6 | PAN HEAD SCREW M3X8 WITH W | O | 2 | * | | | |
| 125-2 | WJ00096364 | SCREW M3X8 WITH WASHER | O | 2 | | | | |
| 126 | 5196002010 | THROTTLE VALVE ASS'Y | | 1 | | | | |
| 127 | 5246001010 | O RING | | 1 | * | | | |
| 127-1 | 213538-8 | O RING 2 | O | 1 | | | | |
| 128 | 5026004010 | JET | | 1 | * | | | |

Please order the parts with part number.

Print Date 25/10/2023

Model No.HTR7610 ENGINE HEDGE TRIMMER

| Item | Parts No. | Description | I/C | Qty | New/Old | Opt. 1 | Opt. 2 | Note |
|-------|------------|------------------------------|-----|-----|---------|--------|--------|------|
| 128-1 | 326085-1 | JET | O | 1 | | | | |
| 129 | 5246001030 | PUMP GASKET | | 1 | * | | | |
| 129-1 | 442172-9 | PUMP GASKET | O | 1 | | | | |
| 130 | 5246001040 | PUMP DIAPHRAGM | | 1 | * | | | |
| 130-1 | 168575-6 | PUMP DIAPHRAGM | O | 1 | * | | | |
| 130-2 | WJ00009599 | PUMP DIAPHRAGM | O | 1 | | | | |
| 131 | 5016004010 | INLET SCREEN | | 1 | * | | | |
| 131-1 | 352010-6 | INLET SCREEN | O | 1 | * | | | |
| 131-2 | WJ00014070 | INLET SCREEN | O | 1 | | | | |
| 132 | 5256007010 | PUMP BODY ASS'Y | | 1 | | | | |
| 133 | 5236046040 | METERING DIAPHRAGM GASKET | | 1 | * | | | |
| 133-1 | 442154-1 | METERING DIAPHRAGM GASKET | O | 1 | | | | |
| 134 | 5316005250 | METERING DIAPHRAGM ASS'Y | | 1 | * | | | |
| 134-1 | 168767-7 | METALING DIAPHRAGM | O | 1 | | | | |
| 135 | 5236046060 | AIR PURGE BODY ASS'Y | | 1 | * | | | |
| 135-1 | 140988-3 | AIR PURGE BODY ASSEMBLY | O | 1 | | | | |
| 136 | 5246001150 | PRIMER PUMP | | 1 | * | | | |
| 136-1 | 424314-7 | PRIMER PUMP | O | 1 | | | | |
| 137 | 5236046050 | PRIMER PUMP COVER | | 1 | * | | | |
| 137-1 | 346270-0 | PRIMER PUMP COVER | O | 1 | | | | |
| 138 | 5236046010 | PUMP COVER SCREW | | 4 | * | | | |
| 138-1 | 266582-4 | TAPPING SCREW 3X24 | O | 4 | | | | |
| 139 | 5236061000 | O RING | | 1 | | | | |
| 140 | 5253003020 | AIR CLEANER HOUSING COMPLETE | | 1 | | | | |
| 141 | 5203004010 | AIR FILTER | | 1 | | | | |
| 142 | 5253020010 | AIR CLEANER COVER | | 1 | | | | |
| 143 | 0043305650 | SCREW ASS'Y | | 2 | * | | | |
| 143-1 | 265667-3 | PAN HEAD SCREW M5X65 WITH R | O | 2 | | | | |
| 155 | 0610089990 | NEEDLE ROLLER BEARING | S | 1 | | | | |
| A01 | 5019001000 | TOOL | | 1 | | | | |

Please order the parts with part number.

Print Date 25/10/2023