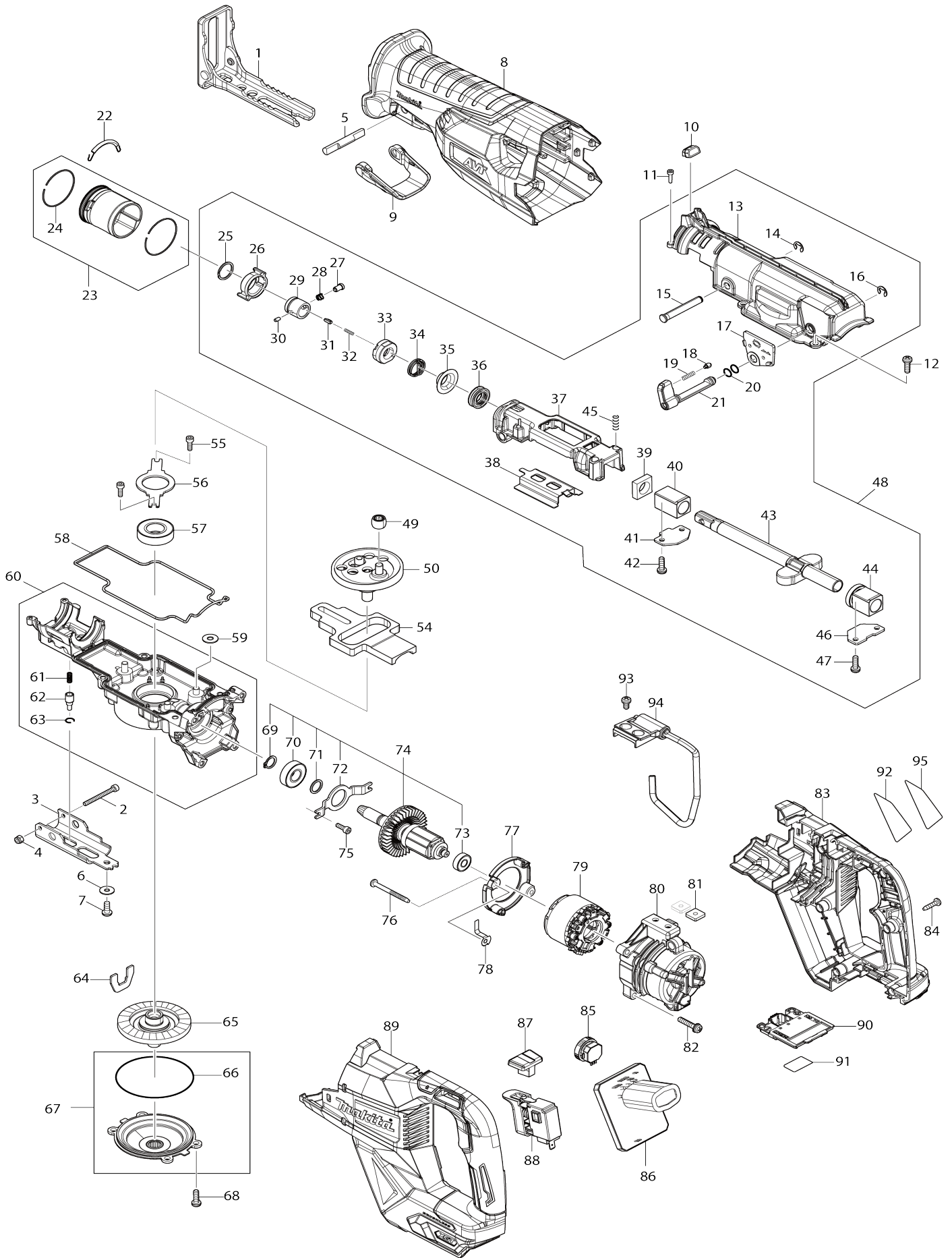


Model No. JR002G CORDLESS RECIPRO SAW



Model No. JR002G CORDLESS RECIPRO SAW

Item No.	Parts No.	Description	Interchangeability	Q'ty	New/Old	Note1	Note2
001	162B43-3	SHOE		1			
002	265A78-8	HEX SOCKET HEAD BOLT M4X40		1			
003	347972-1	SHOE GUIDE PLATE		1			
004	252126-6	HEX. LOCK NUT M4-7		1			
005	326599-0	LOCK PIN		1			
006	253194-2	FLAT WASHER 5		1			
007	266169-2	H.S. BUTTON HEAD BOLT M5X12		1			
008	422869-6	INSULATION COVER		1	*		
008-1	422962-6	INSULATION COVER	O	1			
009	413F39-4	LOCK LEVER		1			
010	620H78-1	LED CIRCUIT		1			
011	265910-0	HEX. SOCKET HEAD BOLT M3X12		2			
012	911225-0	PAN HEAD SCREW M5X16		4			
013	141H98-7	GEAR HOUSING COVER COMPLETE		1	*		
C10	422867-0	SEAL PLATE		1	*		
013-1	1410F6-2	GEAR HOUSING COVER COMPLETE	<	1			
C10	422867-0	SEAL PLATE		1			
014	961012-7	STOP RING E-6		1			
015	268012-1	PIN 7		1			
016	961012-7	STOP RING E-6		1			
017	413F41-7	PLATE C		1			
018	413F45-9	PIN 5		1			
019	232745-4	COMPRESSION SPRING 3		1			
020	213021-5	O RING 5		2			
021	271471-0	LEVER 24		1			
022	232583-4	TENSION SPRING 3		1			
023	136707-3	RELEASE DRUM ASS'Y		1			
D10		INC. 24					
024	232746-2	RING SPRING 39		2			
025	257430-8	RETAINING RING(EXT)18		1			
026	313418-9	DRIVING SLEEVE		1			
027	256569-4	SHOULDER PIN 5		1			
028	234381-2	COMPRESSION SPRING 6		1			
029	327650-9	GUIDE SLEEVE		1			
030	256A11-1	PIN 3		1			
031	310912-2	PUSH PIN		1			
032	232472-3	COMPRESSION SPRING 2		1			
033	413F43-3	CONNECTING SLEEVE		1			
034	233594-2	TORSION SPRING 17		1			
035	257742-9	SHOULDER SLEEVE 14		1			
036	213174-0	X RING 14		1			
037	141H95-3	SLIDER SUPPORT COMPLETE		1			
038	347973-9	SLIDE PLATE		1			
039	423343-7	SEAL PLATE 14		1			
040	214212-1	PLANE BEARING 14A		1			
041	345485-6	PLATE A		1			

042	911225-0	PAN HEAD SCREW M5X16		2		
043	162B44-1	SLIDER		1		
044	141H97-9	BEARING COMPLETE		1		
045	233038-2	COMPRESSION SPRING 5		2		
046	345486-4	PLATE B		1		
047	911225-0	PAN HEAD SCREW M5X16		2		
048	136683-1	GEAR HOUSING COVER ASS'Y		1	*	
D10		INC. 13-21,25-47				
048-1	137136-3	GEAR HOUSING COVER ASS'Y	<	1		
D10		INC. 13-21,25-47				
049	212957-5	NEEDLE BEARING 710		1		
050	136712-0	CRANK CAM ASS'Y		1		
054	313419-7	COUNTER WEIGHT		1		
055	922117-8	HEX. SOCKET HEAD BOLT M4X12		2		
056	285051-6	BEARING RETAINER 80		1		
057	211251-2	BALL BEARING 6003LLB		1		
058	422868-8	SEAL RING		1		
059	253804-1	FLAT WASHER 6		3		
060	136676-8	GEAR HOUSING ASS'Y		1		
D10		INC. 61-63				
061	234084-8	COMPRESSION SPRING 3		1		
062	256A09-8	SHOULDER PIN 8		1		
063	232335-3	RING SPRING 8		1		
064	347974-7	PLATE D		1		
065	141H94-5	TORQUE LIMITER COMPLETE		1		
066	213726-7	O RING 62		1		
067	136708-1	BEARING BOX ASS'Y		1		
D10		INC. 66				
068	911225-0	PAN HEAD SCREW M5X16		4		
069	961052-5	RETAINING RING (EXT) S-12		1		
070	211131-2	BALL BEARING 6001DDW		1		
071	267104-3	FLAT WASHER 12		1		
072	285050-8	BEARING RETAINER 69		1		
073	210062-2	BALL BEARING 607ZZ		1		
074	519728-4	ROTOR ASS'Y		1		
D10		INC. 69-73				
075	922117-8	HEX. SOCKET HEAD BOLT M4X12		2		
076	266425-0	TAPPING SCREW 4X45		2		
077	413F42-5	BAFFLE PLATE		1		
078	347976-3	PLATE E		1	*	
078-1	654890-9	EARTH PLATE	O	1		
079	629470-0	STATOR		1		
080	413F14-0	MOTOR HOUSING		1		
081	264002-2	SQUARE NUT M5		2		
082	911243-8	PAN HEAD SCREW M5X25		4		
083	183V99-3	HANDLE SET		1		
C10	263002-9	RUBBER PIN 4		4		
C20	263005-3	RUBBER PIN 6		4		
C30	8005T5-8	XGT LOGO LABEL		1		
D10		INC. 89				
084	266326-2	TAPPING SCREW 4X18		6		
085	620H79-9	DIAL CIRCUIT		1		

086	620H77-3	CONTROLLER		1		
087	413F44-1	LOCK OFF BUTTON		1		
088	651439-6	SWITCH C3JR-4B-2		1		
089	183V99-3	HANDLE SET		1		
C10	263002-9	RUBBER PIN 4		4		
C20	263005-3	RUBBER PIN 6		4		
C30	8005T5-8	XGT LOGO LABEL		1		
D10		INC. 83				
090	632R99-1	TERMINAL UNIT		1		
091	8116Y8-8	JR002G SERIAL NO. LABEL		1		
092	8116Y1-2	JR002G NAME PLATE		1		
093	911206-4	PAN HEAD SCREW M5X10		2		
094	122B85-9	HOOK ASSEMBLY		1		
095	8048A6-3	CLEAR LABEL		1	*	
A01	194253-2	RECIPRO SAW BLADE SET		1	*	
A08	B-05038	RECIPRO SAW BLADE FOR METAL		1		
A09	B-05044	RECIPRO SAW BLADE FOR PLYW OOD		1		
A10	B-05153	RECIPRO SAW BLADE FOR WOO D		1		
A02	821872-8	PLASTIC CASE		1		
C10	162271-8	LATCH		2		
A04	***DC40RA	DC40RA FAST CHARGER		1		
D10		COMPO-PARTS				
A05	191B26-6	BATTERY BL4040 SET		2		
A06	412393-7	BATTERY COVER		2		

Please state Parts No. when your order.

Print Date 02/23/2024