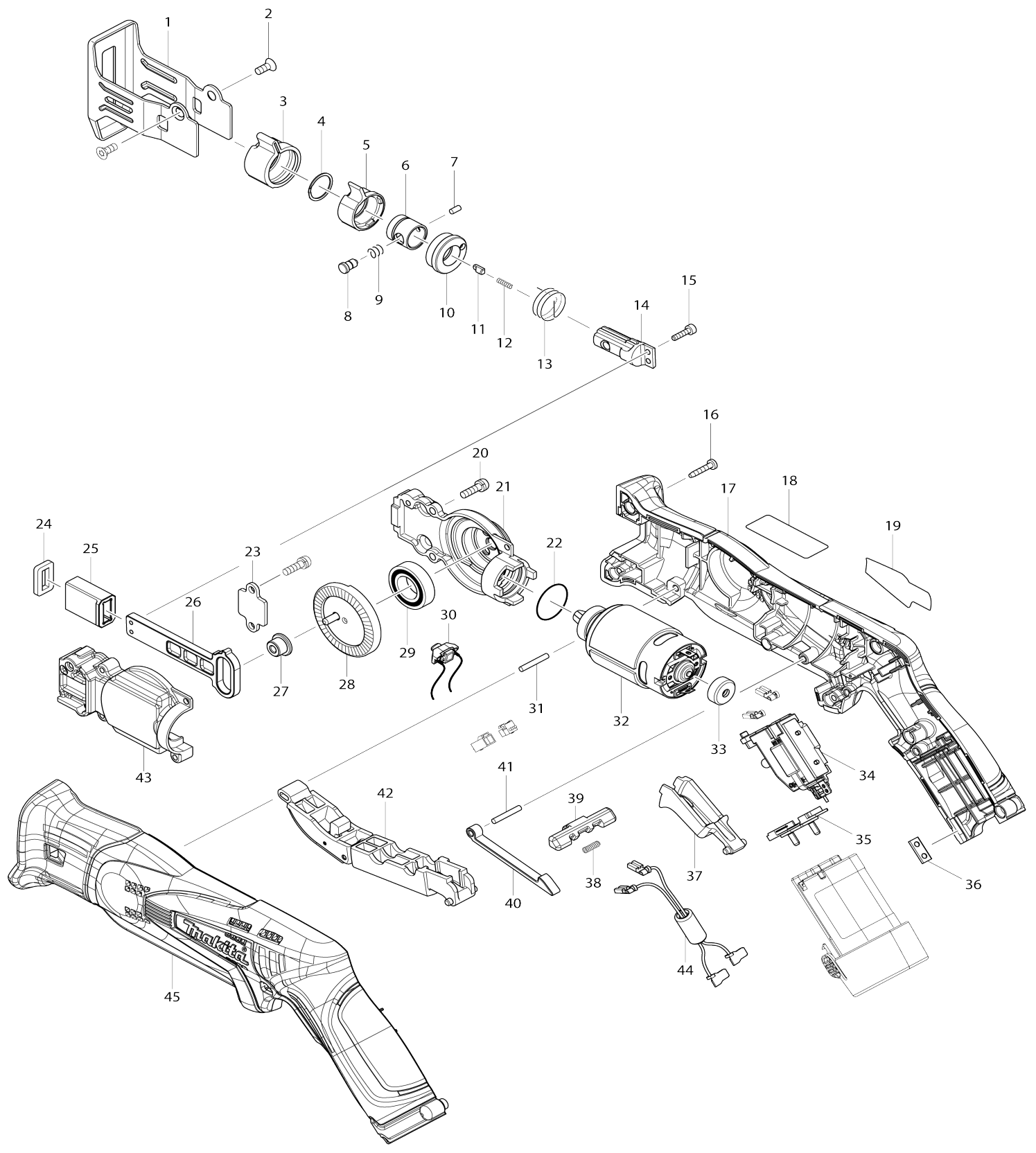


# Model No. JR100D CORDLESS RECIPRO SAW



# Model No. JR100D CORDLESS RECIPRO SAW

Item No.	Parts No.	Description	Interchangeability	Q'ty	New/Old	Note1	Note2
001	346524-5	SHOE		1			
002	265035-0	COUNTERSUNK HEAD SCREW M4 X10		2			
003	424466-4	PROTECTOR		1			
004	257981-1	RETAINING RING (EXT)16		1			
005	310496-0	DRIVING SLEEVE		1			
006	331963-2	GUIDE SLEEVE		1			
007	268094-3	PIN 3		1			
008	256492-3	SHOULDER PIN 5		1			
009	233345-3	COMPRESSION SPRING 6		1			
010	453071-0	CONNECTING SLEEVE		1			
011	310495-2	PUSH PIN		1	*		
011-1	310859-0	PUSH PIN	O	1	*		
011-2	310912-2	PUSH PIN	S	1			
012	233025-1	COMPRESSION SPRING 2		1	*		
012-1	232472-3	COMPRESSION SPRING 2	S	1			
013	233594-2	TORSION SPRING 17		1			
014	326113-2	BLADE GUIDE		1			
015	265910-0	HEX. SOCKET HEAD BOLT M3X12		2	*		
015-1	265D80-9	HEX. SOCKET HEAD BOLT M3X10	<	2			
016	266429-2	TAPPING SCREW 3X16		8			
017	187270-9	HOUSING SET		1			
D10		INC. 45					
019	896377-7	JR100D NAME PLATE		1			
020	266747-8	PAN HEAD SCREW M4X14 WITH WM		5			
021	318805-7	GEAR HOUSING		1			
022	213961-7	O RING 22		1			
023	346525-3	PLATE		1			
024	423424-7	SPONGE SEAL		1			
025	313220-0	SLIDER GUIDE		1			
026	313221-8	SLIDER		1			
027	326112-4	COLLARED SLEEVE 4		1			
028	141127-8	GEAR COMPLETE		1			
029	211242-3	BALL BEARING 6902ZZ		1			
030	620028-8	LED CIRCUIT		1			
031	256158-5	PIN 3		1			
032	629914-0	DC MOTOR		1			
033	424467-2	CAP		1			
034	650666-2	SWITCH C3HW-3A-PEM		1			
035	643830-2	TERMINAL		1			
036	345998-7	SET PLATE		1			
037	453072-8	SWITCH LEVER R		1			
038	233438-6	COMPRESSION SPRING 4		1			
039	453070-2	LOCK OFF LEVER R		1			
040	313219-5	LINK		1			
041	256158-5	PIN 3		1			
042	141128-6	SWITCH LEVER F COMPLETE		1			

043	318806-5	GEAR HOUSING COVER		1		
044	638932-7	LINE FILTER UNIT		1		
C10	654069-2	RECEPTACLE		2		
045	187270-9	HOUSING SET		1		
D10		INC. 17				
046	126201-3	BLADE CLAMP ASSEMBLY		1		
D10		INC. 3-14				
A01	B-20432	RECIPROSAW BLADE 100MM		1		
A02	B-20404	RECIPROSAW BLADE 100MM		1		
A03	***DC10WA	DC10WA BATTERY CHARGER		1		
A04	194550-6	BATTERY BL1013 SET		2	*	
A04-1	196066-7	BATTERY BL1013 SET	O	2		
A05	821549-5	CONNECTOR PLASTIC CASE (TYP E1)		1	*	
C10	453974-8	LATCH		4	*	
A05-1	821549-5	CONNECTOR PLASTIC CASE (TYP E1)	<	1		
C10	453974-8	LATCH		4		
A06	837664-5	INNER TRAY		1		
A07	800Y02-4	JR100DWJ INDICATION LABEL		1		
A08	800Y03-2	JR100DWJ PLASTIC CASE LABEL		2		

Please state Parts No. when your order.

Print Date 02/16/2024