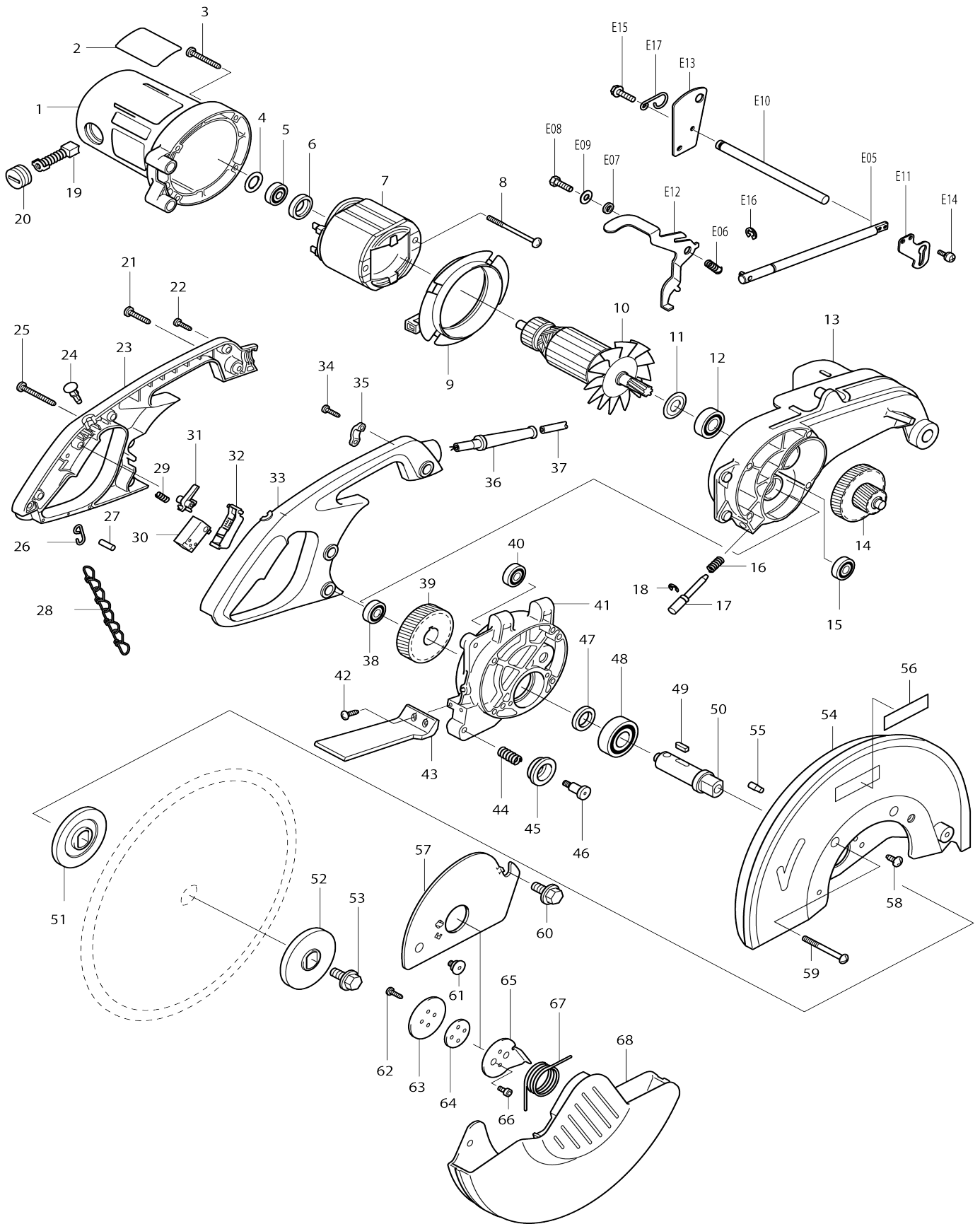
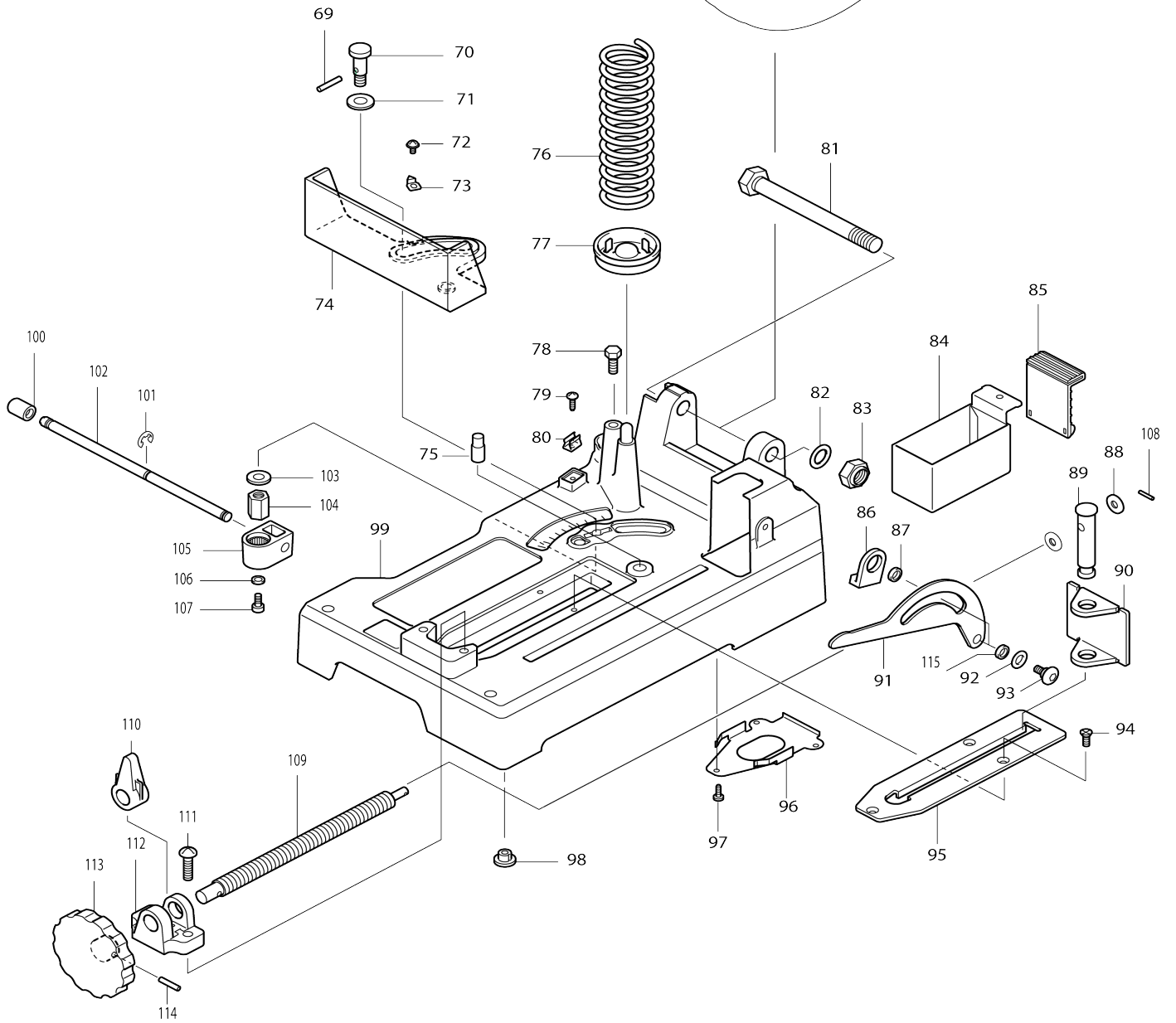
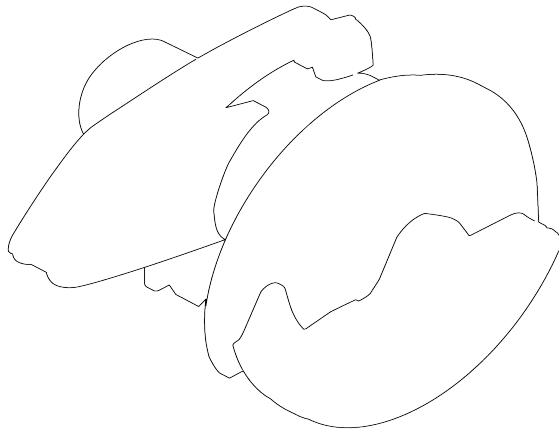


Model No.LC1230 METAL CUTTING SAW 305MM



Model No.LC1230 METAL CUTTING SAW 305MM



Model No.LC1230 METAL CUTTING SAW 305MM

Item No.	Parts No.	Description	Interchangability	Q'ty	New/Old	Note1	Note2
001A_	151641-6	MOTOR HOUSING COMPLETE		1			
C10	632799-5	SUPPORT UNIT		1			
C20	643705-5	BRUSH HOLDER		2	*		
C21	643707-1	BRUSH HOLDER	O	2			
C30	810964-8	CAUTION LABEL		1			
C40	810968-0	CAUTION LABEL		1			
002	851537-8	NAME PLATE LC1230		1			
003	266028-0	TAPPING SCREW BIND CT 5X40		4			
004	253749-3	FLAT WASHER 16		1			
005	210053-3	BALL BEARING 629LLB		1	*		
005-1	211056-0	BALL BEARING 629LLB	O	1	*		
005-2	210042-8	BALL BEARING 629LLB	O	1			
006	681633-6	INSULATION WASHER		1	*		
006-1	681666-1	INSULATION WASHER	O	1			
007A_	636168-2	FIELD 220V		1			
008	266059-9	TAPPING SCREW 5X75		2			
009	415475-4	BAFFLE PLATE		1			
010A_	516573-8	ARMATURE ASS'Y 220V		1	*		
C10	241514-2	FAN 92		1	*		
D10		INC. 5,6					
010A1	510283-9	ARMATURE ASS'Y 220V	O	1			
C10	241514-2	FAN 92		1			
D10		INC. 5,6					
011	267714-6	WASHER 15		1			
012	211206-7	BALL BEARING 6202LLB		1			
013A_	317147-6	GEAR HOUSING L		1			
014	226122-0	GEAR COMPLETE 16-44		1			
015	211064-1	BALL BEARING 6000		1			
016	231418-6	COMPRESSION SPRING 9		1			
017	322678-2	SHAFT LOCK		1			
018	961014-3	STOP RING E-8		1			
019	191953-5	CARBON BRUSH CB-203		1	*		
019-1	194991-6	CARBON BRUSH SET CB203	O	1			
020	643700-5	BRUSH HOLDER CAP 7-18		2			
021	266032-9	TAPPING SCREW BIND CT 5X30		1			
022	265995-6	TAPPING SCREW 4X18		4			
023	182628-7	HANDLE SET		1			
D10		INC. 33					
024	411478-6	SWITCH BUTTON		1			
025	266033-7	TAPPING SCREW BIND CT 5X50		2			
026	281207-9	HANGER		1	*		
026-1	281216-8	HANGER	O	1			
027	256012-3	PIN 6		1	*		
027-1	268101-2	PIN 6	O	1			
028	282010-1	CHAIN		1	*		
028-1	282016-9	CHAIN	<	1	*		
028-2	281022-1	CHAIN	<	1			

029	231397-8	COMPRESSION SPRING 4		1		
030	651922-3	SWITCH TG71B		1		
031	415366-9	SWITCH LOCK		1		
032	152463-7	SWITCH LEVER COMPLETE		1		
033	182628-7	HANDLE SET		1		
D10		INC. 23				
034	265995-6	TAPPING SCREW 4X18		2		
035	687052-4	STRAIN RELIEF		1	*	
035-1	687124-5	STRAIN RELIEF	O	1		
036B_	682540-6	CORD GUARD 9.3-90		1		
037C_	665865-3	POWER SUPPLY CORD 1.0-2-2.5		1		
038	211064-1	BALL BEARING 6000		1		
039	226427-8	HELICAL GEAR 38		1		
040	211061-7	BALL BEARING 6000LLB		1		
041A_	317226-0	GEAR HOUSING R		1		
042	266034-5	TAPPING SCREW CT 4X16		2		
043	416869-6	PROTECTOR		1		
044	231226-5	COMPRESSION SPRING 11		1		
045	415474-6	BLADE GUIDE		1		
046	266030-3	SCREW M6		1		
047	257139-2	RING 20		1	*	
047-1	257139-2	RING 20	O	1		
048	211329-1	BALL BEARING 6204DDW		1		
049	254229-2	KEY 5		1		
050	323828-2	SPINDLE		1		
051	224308-0	INNER FLANGE 69		1		
052	224309-8	OUTER FLANGE 69		1	*	
052-1	224379-7	OUTER FLANGE 69	<	1		
053	265414-2	HEX. FLANGE HEAD BOLT M10X20		1		
054	183089-4	BLADE CASE SET		1		
D10		INC. 56				
055	256405-4	PIN 6-7		2		
056	819064-1	MAKITA MARK		1		
057	344737-2	CENTER COVER		1		
058	266035-3	TAPPING SCREW BIND CT 5X12		2		
059	911383-2	PAN HEAD SCREW M6X60		4		
060	265414-2	HEX. FLANGE HEAD BOLT M10X20		1		
061	265020-3	+ FLAT HEAD SCREW M6		1	*	
061-1	265121-7	+ FLAT HEAD SCREW M6	<	1		
062	266034-5	TAPPING SCREW CT 4X16		2		
063	344735-6	CENTER SUPPORT		1		
064	344734-8	CENTER WASHER		1		
065	344736-4	CENTER PLATE		1		
066	922107-1	HEX. SOCKET HEAD BOLT M4X8		2		
067	231643-9	TORSION SPRING 38		1		
068	317152-3	SAFETY COVER		1		
069	256098-7	PIN 5		1		
070	323882-6	COLLARED SHAFT 12		1		
071	253843-1	FLAT WASHER 12		1		
072	911103-4	PAN HEAD SCREW M4X6		1		

073	816128-2	POINTER		1		
074	310086-9	WISE		1		
075	256453-3	PIN 12		1		
076	233103-7	COMPRESSION SPRING 45		1		
077	165066-8	SPRING HOLDER		1		
078	265412-6	HEX. BOLT M8X20		1		
079	266034-5	TAPPING SCREW CT 4X16		1		
080	232075-3	LEAF SPRING		1		
081	265413-4	HEX. BOLT M16		1		
082	253771-0	FLAT WASHER 16		1		
083	252044-8	HEX. NUT M16-24		1		
084	344740-3	DUST BOX		1		
085	421671-4	RUBBER PAD		1		
086	421670-6	CUSHION		1		
087	257222-5	RING 8		1		
088	253731-2	FLAT WASHER 8		2		
089	268040-6	PIN 16		1		
090	344118-0	VICE PLATE		1		
091	344738-0	LINK PLATE		1	*	
091-1	346633-0	LINK PLATE	S	1		
092	253139-0	FLAT WASHER 8		2	*	
092-1	267236-6	FLAT WASHER 8	S	2		
093	251331-2	+ PAN HEAD SCREW M6		2	*	
093-1	265089-7	+ PAN HEAD SCREW M6	S	2		
094	912212-2	COUNTERSUNK HEAD SCREW M5 X12		3		
095	344119-8	GUIDE PLATE		1		
096	344739-8	UNDER PLATE		1		
097	266026-4	TAPPING SCREW BIND CT 4X12		3		
098	286212-1	CAP 20		5		
099A_	151624-6	BASE COMPLETE		1	*	
C10	810965-6	CAUTION LABEL		1	*	
099A1	151624-6	BASE COMPLETE	O	1		
C10	810965-6	CAUTION LABEL		1		
100	286236-7	CAP 16		1		
101	961014-3	STOP RING E-8		2		
102	323883-4	LEVER ROD 10		1		
103	253024-7	FLAT WASHER 10		1		
104	252161-4	HEX. NUT M10-17		1		
105	151622-0	LEVER HOLDER COMPLETE		1		
106	941152-7	FLAT WASHER 6		1		
107-1	265381-1	HEX. BOLT M6X16		1		
108	951063-8	SPRING PIN 3-16		1		
109	322679-0	VICE SCREW		1		
110	322209-7	VICE NUT		1		
111	911451-1	PAN HEAD SCREW M8X30		2		
112	311949-2	SCREW GUIDE		1		
113	271062-7	HANDLE 100		1	*	
113-1	271072-4	HANDLE 100	O	1		
114	951166-8	SPRING PIN 5-24		1		
115	257157-0	RING 8		1		
A01	782210-8	SOCKET WRENCH 17		1		

A02	192219-6	SAFETY GOGGLE		1	*		
A03B_	A-86723	T.C.T.SAW BLADE 305X60TX25.4		1	*		
A03B 1	B-34132	T.C.T SAW BLADE 305X25.4X60T	<	1			
A04	411478-6	SWITCH BUTTON		2			
E01	645200-1	NOISE SUPPRESSOR		1			
E05	151642-4	ROD 12 COMPLETE		1			
E06	233197-2	COMPRESSION SPRING 7		1			
E07	257078-6	RING 6		1			
E08	265381-1	HEX. BOLT M6X16		1			
E09	267133-6	FLAT WASHER 6		1			
E10	323885-0	LOCK PIN 12		1			
E11	344742-9	LOCK PLATE		1			
E12	344743-7	LOCK LEVER		1			
E13	344744-5	STOPPER PLATE		1	*		
E13-1	344744-5	STOPPER PLATE	X	1	*		
E13-2	346632-2	STOPPER PLATE	S	1			
E14	911118-1	PAN HEAD SCREW M4X12		2			
E15	922331-6	HEX. SOCKET HEAD BOLT M6X20		2			
E16	961014-3	STOP RING E-8		1			
E17	322049-3	HOOK		1	*		
002-1	855P11-4	LC1230 NAME PLATE	<	1			
013A_	316626-1	GEAR HOUSING (L)		1			
041A_	317148-4	GEAR HOUSING R		1			
054	183L43-0	BLADE CASE SET		1	*		
054-1	183L43-0	BLADE CASE SET	O	1			
D10		INC. 56					
086	422347-6	CUSHION		1			
099A_	154764-9	BASE COMPLETE		1	*		
099A1	140M08-1	BASE COMPLETE	<	1			
C20	813L22-1	CAUTION LABEL		2			

Please state Parts No. when your order.

Print Date 12/04/2023