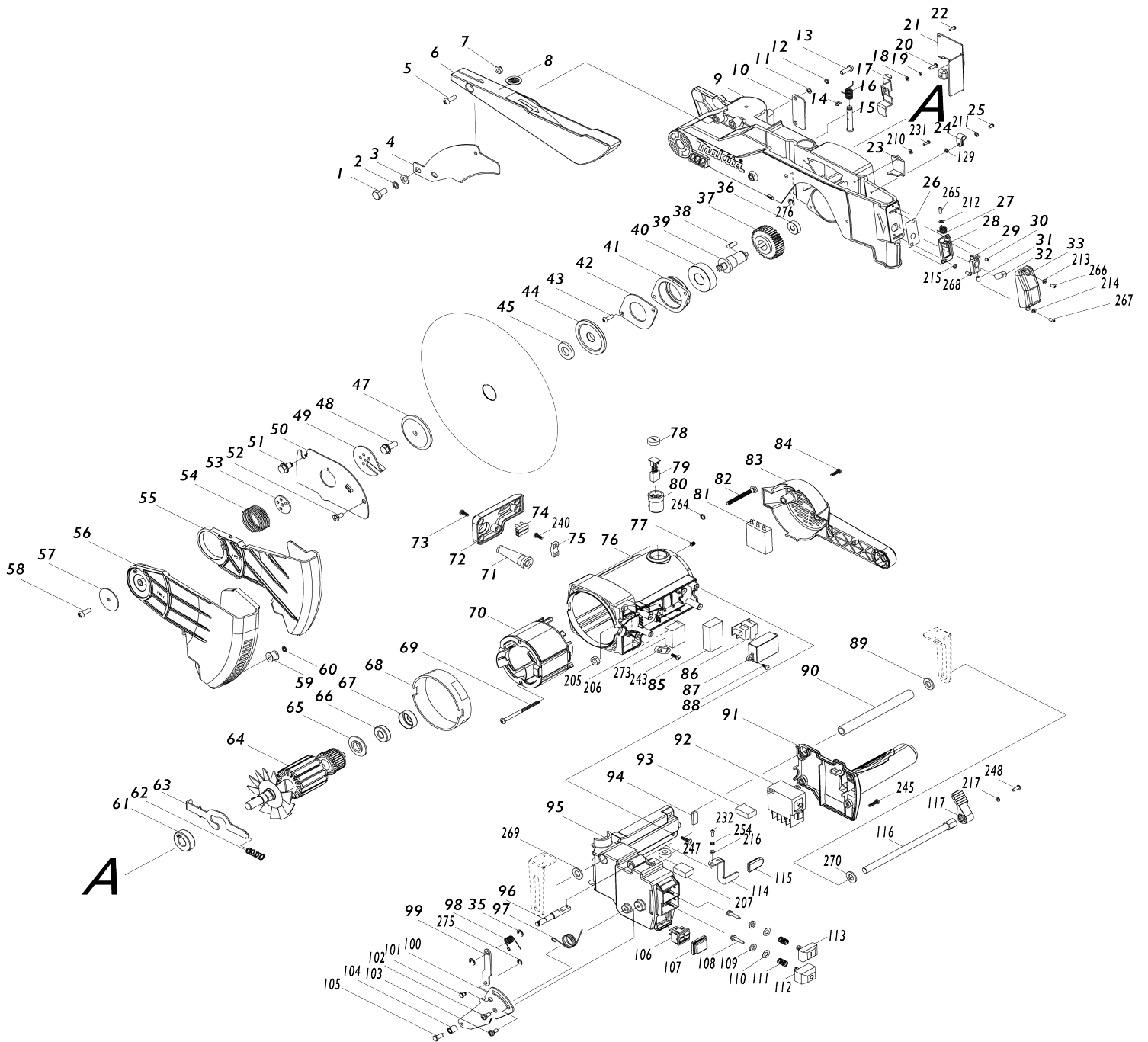


# Model No.LH1201FL 305MM TABLE TOP MITER SAW





Model No.LH1201FL 305MM TABLE TOP MITER SAW

| Item No. | Parts No.  | Description                 | Interchangability | Q'ty | New/Old | Note1 | Note2 |
|----------|------------|-----------------------------|-------------------|------|---------|-------|-------|
| 001      | JM23300009 | HEX BOLT M8X16              |                   | 2    |         |       |       |
| 002      | JM23300010 | SPRING WASHER 8             |                   | 2    |         |       |       |
| 003      | JM23300011 | FLAT WASHER 8               |                   | 2    |         |       |       |
| 004      | JM23300012 | RIVING KNIFE                |                   | 1    |         |       |       |
| 005      | JM23300013 | PAN HEAD SCREW M6X16        |                   | 1    |         |       |       |
| 006      | JM23300300 | UP BLADE GUARD COMPLETE     |                   | 1    |         |       |       |
| D10      |            | INC. 8                      |                   |      |         |       |       |
| 007      | JM23300015 | LOCKNUT M6                  |                   | 1    | *       |       |       |
| 007-1    | JM23300015 | LOCKNUT M6                  | O                 | 1    |         |       |       |
| 008      | JM27080060 | WARNING LABEL               |                   | 1    | *       |       |       |
| 008-1    | JM2708B060 | CAUTION LABEL               | X                 | 1    |         |       |       |
| 009      | JM23300244 | BLADE CASE                  |                   | 1    | *       |       |       |
| 009-1    | JM23300244 | BLADE CASE                  | O                 | 1    |         |       |       |
| D10      |            | INC. 36,143                 |                   |      |         |       |       |
| 010      | JM23300239 | FENCE PRESS PLAT            |                   | 1    |         |       |       |
| 011      | JM23300019 | FLAT WASHER 6               |                   | 2    |         |       |       |
| 012      | JM23300020 | SPRING WASHER 6             |                   | 2    |         |       |       |
| 013      | JM23300248 | PAN HEAD SCREW M6X16        |                   | 2    |         |       |       |
| 014      | JM23300022 | E RING 5                    |                   | 1    | *       |       |       |
| 014-1    | JM23300022 | E RING 5                    | O                 | 1    |         |       |       |
| 015      | JM23300023 | LIFTING LIMITED PLATE SHAFT |                   | 1    |         |       |       |
| 016      | JM23300024 | TORSION SPRING              |                   | 1    |         |       |       |
| 017      | JM23300025 | LIFTING LIMITED PLATE       |                   | 1    |         |       |       |
| 018      | JM23300026 | FLAT WASHER 4               |                   | 2    |         |       |       |
| 019      | JM23300027 | SPRING WASHER 4             |                   | 2    |         |       |       |
| 020      | JM23300028 | PAN HEAD SCREW M4X12        |                   | 2    |         |       |       |
| 021      | JM23300029 | PROTECTION COVER            |                   | 1    |         |       |       |
| 022      | JM23300030 | PAN HEAD SCREW M4X10        |                   | 2    |         |       |       |
| 023      | JM23300031 | LASER TERMINAL BOX COVER    |                   | 1    |         |       |       |
| 024      | JM23300032 | CORD CLAMP                  |                   | 1    |         |       |       |
| 025      | JM23300033 | PAN HEAD SCREW M4X8         |                   | 1    |         |       |       |
| 026      | JM23300034 | LASER DUST-PROOF WASHER     |                   | 1    |         |       |       |
| 027      | JM23300035 | LASER SPRING                |                   | 1    |         |       |       |
| 028      | JM23300036 | LASER BRACKET               |                   | 1    |         |       |       |
| 029      | JM23300037 | LASER TURNING BRACKET       |                   | 1    |         |       |       |
| 030      | JM23300038 | HEX SOCKET SET SCREW M4X6   |                   | 1    |         |       |       |
| 031      | JM23300039 | H.S.SETTING SCREW M5X8      |                   | 1    | *       |       |       |
| 031-1    | JM23300039 | H.S.SETTING SCREW M5X8      | O                 | 1    |         |       |       |
| 032      | JM23300040 | LASER DIODE                 |                   | 1    |         |       |       |
| 033      | JM23300041 | LASER COVER                 |                   | 1    |         |       |       |
| 035      | JM23300042 | E RING 6                    |                   | 2    | *       |       |       |
| 035-1    | JM23300042 | E RING 6                    | O                 | 1    |         |       |       |
| 036      | JM23300043 | BEARING 608                 |                   | 1    |         |       |       |
| 037      | JM23300044 | SPINDLE GEAR                |                   | 1    | *       |       |       |
| 037-1    | JM23300044 | SPINDLE GEAR                | O                 | 1    |         |       |       |
| 038      | JM23300045 | KEY 6X16                    |                   | 1    |         |       |       |
| 039      | JM23300046 | SPINDLE                     |                   | 1    |         |       |       |

|       |            |                        |   |   |   |  |
|-------|------------|------------------------|---|---|---|--|
| 040   | JM23300047 | BEARING 6204           |   | 1 |   |  |
| 041   | JM23300048 | BEARING BRACKET        |   | 1 |   |  |
| 042   | JM23300049 | BEARING COVER          |   | 1 |   |  |
| 043   | JM23300050 | H.S.BOLT M5X16         |   | 2 | * |  |
| 043-1 | JM23300050 | H.S.BOLT M5X16         | O | 2 |   |  |
| 044   | JM23300051 | INNER FLANGE           |   | 1 |   |  |
| 045   | JM23100144 | RING 30                |   | 1 | * |  |
| 047   | JM23300053 | OUTER FLANGE           |   | 1 |   |  |
| 048   | JM23300054 | FLANGE BOLT M8X20      |   | 1 | * |  |
| 048-1 | JM23300054 | FLANGE BOLT M8X20      | O | 1 |   |  |
| 049   | JM23300055 | CENTER PLATE           |   | 1 |   |  |
| 050   | JM23300056 | GUARD FIX PLATE        |   | 1 |   |  |
| 051   | JM23300057 | GUARD SCREW M8X12      |   | 1 |   |  |
| 052   | JM23300058 | GUARD LOCK BOLT        |   | 1 | * |  |
| 052-1 | JM23300058 | GUARD LOCK BOLT        | O | 1 |   |  |
| 053   | JM23300059 | CENTER WASHER          |   | 1 |   |  |
| 054   | JM23300060 | GUARD TORSION SPRING   |   | 1 |   |  |
| 055   | JM23300061 | INNER GUARD            |   | 1 |   |  |
| 056   | JM23300310 | OUTER GUARD COMPLETE   |   | 1 |   |  |
| D10   |            | INC. 59,60             |   |   |   |  |
| 057   | JM23300063 | FIX PLATE              |   | 1 |   |  |
| 058   | JM23300064 | PAN HEAD SCREW M5X25   |   | 1 |   |  |
| 059   | JM23300065 | GUARD ROLLER SLEEVE    |   | 1 |   |  |
| 060   | JM23300066 | INNER STAR WASHER 5    |   | 1 | * |  |
| 060-1 | JM23300066 | INNER STAR WASHER 5    | O | 1 |   |  |
| 061   | JM23300067 | BEARING 6202-RS        |   | 1 |   |  |
| 062   | JM23300068 | COMPRESSION SPRING     |   | 1 |   |  |
| 063   | JM23300069 | SHAFT LOCK PLATE       |   | 1 |   |  |
| 064   | JM23300001 | ARMATURE 230V          |   | 1 |   |  |
| D10   |            | INC. 61, 65, 66        |   |   |   |  |
| 065   | JM23300070 | DUST PROOF COVER       |   | 1 |   |  |
| 066   | JM23300071 | BEARING 6001-RS        |   | 1 |   |  |
| 067   | JM23300072 | BUFFER PAD             |   | 1 |   |  |
| 068   | JM23300073 | BAFFLE PLATE           |   | 1 |   |  |
| 069   | JM23300074 | TAPPING SCREW ST4.8X75 |   | 2 |   |  |
| 070   | JM23300003 | FIELD 230V             |   | 1 |   |  |
| 071   | JM23300075 | PROTECTION TUBE        |   | 1 |   |  |
| 072   | JM23300076 | TERMINAL BOX COVER     |   | 1 |   |  |
| 073   | JM23300077 | TAPPING SCREW ST4.2X12 |   | 5 | * |  |
| 073-1 | JM23300088 | TAPPING SCREW ST4.2X16 | X | 5 |   |  |
| 074   | JM23300078 | CONNECTION TERMINAL    |   | 1 |   |  |
| 075   | JM23300079 | CORD CLAMP             |   | 1 |   |  |
| 076   | JM23300320 | MOTOR HOUSING COMPLETE |   | 1 |   |  |
| D10   |            | INC. 77,80             |   |   |   |  |
| 077   | JM23300081 | H.S.SETTING SCREW M5X8 |   | 2 | * |  |
| 078   | JM23300082 | CARBON BRUSH COVER     |   | 2 |   |  |
| 079   | JM23000123 | CARBON BRUSH 2PCS/SET  |   | 1 |   |  |
| 080   | JM23300084 | CARBON BRUSH HOLDER    |   | 2 | * |  |
| 081   | JM23300085 | SOFT STARTER           |   | 1 | * |  |
| 081-1 | JM23300085 | SOFT STARTER           | O | 1 |   |  |
| 082   | JM23300086 | PAN HEAD SCREW M6X55   |   | 4 |   |  |
| 083   | JM23300087 | REAR COVER             |   | 1 |   |  |

|       |            |                           |   |   |   |  |  |
|-------|------------|---------------------------|---|---|---|--|--|
| 084   | JM23300088 | TAPPING SCREW ST4.2X16    |   | 4 |   |  |  |
| 085   | JM23300089 | SPONGE A                  |   | 1 | * |  |  |
| 085-1 | JM23300089 | SPONGE A                  | O | 1 |   |  |  |
| 086   | JM23300090 | TRANSFORMER B03           |   | 1 | * |  |  |
| 086-1 | JM23300090 | TRANSFORMER B03           | O | 1 |   |  |  |
| 087   | JM23300091 | TRANSFORMER COVER         |   | 1 |   |  |  |
| 088   | JM23300092 | TAPPING SCREW ST4.2X8     |   | 2 | * |  |  |
| 088-1 | JM23300077 | TAPPING SCREW ST4.2X12    | X | 2 |   |  |  |
| 089   | JM23300093 | FLAT WASHER 10            |   | 1 |   |  |  |
| 090   | JM23300094 | TABLE LOCK TUBE           |   | 1 |   |  |  |
| 091   | JM23300095 | HANDLE COVER              |   | 1 |   |  |  |
| 092   | JM23300096 | SWITCH                    |   | 1 | * |  |  |
| 092-1 | JM23300096 | SWITCH                    | O | 1 |   |  |  |
| 093   | JM23300097 | CAPACITOR                 |   | 1 |   |  |  |
| 094   | JM23300098 | SPONGE B                  |   | 1 |   |  |  |
| 095   | JM23300099 | HANDLE                    |   | 1 |   |  |  |
| 096   | JM23300100 | TURNING SHAFT             |   | 1 |   |  |  |
| 097   | JM23300101 | TORSION SPRING            |   | 1 |   |  |  |
| 098   | JM23300102 | TORSION SPRING            |   | 1 |   |  |  |
| 099   | JM23300103 | LOCK LEVER B              |   | 1 |   |  |  |
| 100   | JM23300330 | LOCKING PLATE COMPLETE    |   | 1 |   |  |  |
| D10   |            | INC. 104,105              |   |   |   |  |  |
| 101   | JM23300105 | RIVET                     |   | 1 | * |  |  |
| 101-1 | JM23300105 | RIVET                     | O | 1 |   |  |  |
| 102   | JM23300106 | CONNECTION SCREW          |   | 1 | * |  |  |
| 102-1 | JM23300106 | CONNECTION SCREW          | O | 1 |   |  |  |
| 103   | JM23300107 | PIN                       |   | 1 | * |  |  |
| 103-1 | JM23300107 | PIN                       | O | 1 |   |  |  |
| 104   | JM23300108 | TURNING SLEEVE            |   | 1 | * |  |  |
| 105   | JM23300109 | PIN                       |   | 1 | * |  |  |
| 106   | JM23300110 | SWITCH HY39-2             |   | 1 |   |  |  |
| 107   | JM23300111 | SWITCH COVER HY39-2       |   | 1 |   |  |  |
| 108   | JM23300112 | PRESS BUTTON CAP          |   | 1 | * |  |  |
| 108-1 | JM23300112 | PRESS BUTTON CAP          | O | 1 |   |  |  |
| 109   | JM23300113 | FELT RING                 |   | 2 |   |  |  |
| 110   | JM23300114 | WASHER                    |   | 2 |   |  |  |
| 111   | JM23300115 | SPRING                    |   | 2 |   |  |  |
| 112   | JM23300116 | SWITCH OFF BUTTON         |   | 1 |   |  |  |
| 113   | JM23300117 | SWITCH ON BUTTON          |   | 1 |   |  |  |
| 114   | JM23300118 | LOCK LEVER                |   | 1 |   |  |  |
| 115   | JM23300119 | LEVER CAP                 |   | 1 |   |  |  |
| 116   | JM23300120 | TABLE LOCK BOLT           |   | 1 |   |  |  |
| 117   | JM23300121 | TABLE LOCKING LEVER       |   | 1 |   |  |  |
| 118   | JM23300245 | INTERLOCK PLATE           |   | 1 |   |  |  |
| 119   | JM23300123 | LOCKNUT M5                |   | 2 | * |  |  |
| 119-1 | JM23300123 | LOCKNUT M5                | O | 2 |   |  |  |
| 120   | JM23300124 | COUNTERSUNK SCREW M5X14   |   | 2 | * |  |  |
| 120-1 | JM23300124 | COUNTERSUNK SCREW M5X14   | O | 2 |   |  |  |
| 121   | JM23300125 | TAPPING SCREW ST3.5X14    |   | 4 |   |  |  |
| 122   | JM23300126 | WORKING TABLE             |   | 1 |   |  |  |
| 123   | JM23300236 | TABLE LIFTING SQUARE TUBE |   | 1 |   |  |  |
|       |            |                           |   |   |   |  |  |

|       |            |                         |   |   |   |  |
|-------|------------|-------------------------|---|---|---|--|
| 124   | JM23300128 | PRESS WASHER            |   | 1 |   |  |
| 125   | JM23300129 | LOCK SPRING             |   | 1 |   |  |
| 126   | JM23300130 | TABLE LOCKING BOLT      |   | 1 | * |  |
| 126-1 | JM23300130 | TABLE LOCKING BOLT      | O | 1 |   |  |
| 127   | JM23300131 | TABLE SCALE LABEL       |   | 1 |   |  |
| 128   | JM23300132 | TABLE SUPPORT PLATE     |   | 1 | * |  |
| 128-1 | JM23300132 | TABLE SUPPORT PLATE     | O | 2 |   |  |
| 129   | JM23300133 | OUTER STAR WASHER 4     |   | 1 | * |  |
| 130   | JM23300134 | CORD CLIP               |   | 1 |   |  |
| 131   | JM23300135 | TERMINAL BOX            |   | 1 |   |  |
| 132   | JM23300136 | TERMINAL BOX COVER      |   | 1 |   |  |
| 133   | JM23300137 | PAN HEAD SCREW M4X14    |   | 3 |   |  |
| 134   | JM23300138 | LAMP COVER              |   | 1 |   |  |
| 135   | JM23300139 | LAMP BOX                |   | 1 |   |  |
| 136   | JM23300140 | TAPPING SCREW ST3.5X9   |   | 2 | * |  |
| 136-1 | JM23300140 | TAPPING SCREW ST3.5X9   | O | 2 |   |  |
| 137   | JM23300141 | UNDER GUARD             |   | 1 |   |  |
| 138   | JM23300142 | COMPRESSION SPRING      |   | 1 |   |  |
| 139   | JM23300143 | H.S.SETTING SCREW M6X16 |   | 1 | * |  |
| 139-1 | JM23300143 | H.S.SETTING SCREW M6X16 | O | 1 |   |  |
| 140   | JM23300144 | LINK PLATE SCREW        |   | 1 |   |  |
| 141   | JM23300340 | LINK PLATE COMPLETE     |   | 1 |   |  |
| D10   |            | INC. 146-148            |   |   |   |  |
| 142   | JM23300146 | SLEEVE                  |   | 1 |   |  |
| 143   | JM23300147 | LINK PIN                |   | 1 |   |  |
| 144   | JM23300148 | LINK PIN RING           |   | 1 |   |  |
| 145   | JM23300149 | THIN FLAT WASHER 6      |   | 1 |   |  |
| 146   | JM23300150 | WASHER                  |   | 1 | * |  |
| 147   | JM23300151 | BEARING 619-6-2Z        |   | 1 | * |  |
| 148   | JM23300152 | LINK PIN SHAFT          |   | 1 | * |  |
| 149   | JM23300153 | COMPRESSION SPRING      |   | 1 |   |  |
| 150   | JM23300154 | SPRING COVER            |   | 1 |   |  |
| 151   | JM23300155 | H.S.BOLT M6X12          |   | 1 | * |  |
| 151-1 | JM23300155 | H.S.BOLT M6X12          | O | 1 |   |  |
| 152   | JM23300156 | SPRING BRACKET          |   | 1 |   |  |
| 153   | JM23300157 | SPRING SUPPORT BRACKET  |   | 1 |   |  |
| 154   | JM23300158 | BALL TYPE KNOB          |   | 1 |   |  |
| 155   | JM23300159 | BEVEL BRACKET           |   | 1 | * |  |
| 156   | JM23300160 | O TYPE RING 8.5         |   | 1 | * |  |
| 156-1 | JM23300160 | O TYPE RING 8.5         | O | 1 |   |  |
| 157   | JM23300161 | LOCK PIN                |   | 1 |   |  |
| 158   | JM23300162 | BEVEL LOCK HANDLE       |   | 1 |   |  |
| 159   | JM23300163 | LOCKNUT M12             |   | 1 | * |  |
| 159-1 | JM23300163 | LOCKNUT M12             | O | 1 |   |  |
| 160   | JM23300164 | FLAT WASHER 12          |   | 1 |   |  |
| 161   | JM23300165 | BEVEL LOCK ROD          |   | 1 |   |  |
| 162   | JM23300166 | BEVEL SHAFT             |   | 1 |   |  |
| 163   | JM23300167 | HEX NUT M8              |   | 3 | * |  |
| 163-1 | JM23300167 | HEX NUT M8              | O | 1 |   |  |
| 164   | JM23300168 | BUFFER WASHER           |   | 1 |   |  |
| 165   | JM23300169 | HEX BOLT M8X50          |   | 1 |   |  |
| 166   | JM23300170 | H.S.BOLT M5X8           |   | 4 | * |  |

|       |            |                             |   |   |   |  |  |
|-------|------------|-----------------------------|---|---|---|--|--|
| 166-1 | JM23300170 | H.S.BOLT M5X8               | O | 4 |   |  |  |
| 167   | JM23300171 | SPRING WASHER 5             |   | 4 |   |  |  |
| 168   | JM23300172 | GUARD FIX PLATE             |   | 1 |   |  |  |
| 169   | JM23300173 | GUARD BRACKET               |   | 1 |   |  |  |
| 170   | JM23300174 | SPRING SCREW                |   | 1 |   |  |  |
| 171   | JM23300175 | BEVEL SCALE LABEL           |   | 1 |   |  |  |
| 172   | JM23300176 | ORIENTING SCREW             |   | 1 | * |  |  |
| 172-1 | JM23300176 | ORIENTING SCREW             | O | 1 |   |  |  |
| 173   | JM23300178 | SPRING                      |   | 1 |   |  |  |
| 174   | JM23300177 | CUTTING DEPTH ADJUSTING NUT |   | 1 |   |  |  |
| 175   | JM23300179 | PIVOT                       |   | 1 |   |  |  |
| 176   | JM23300180 | WRENCH CLIP                 |   | 1 |   |  |  |
| 177   | JM23300181 | BACK SUPPORT                |   | 1 |   |  |  |
| 178   | JM23300182 | MITER POINTER               |   | 1 |   |  |  |
| 179   | JM23300183 | DUST PORT                   |   | 1 |   |  |  |
| 180   | JM23300184 | ELASTIC PIN M4X30           |   | 1 | * |  |  |
| 180-1 | JM23300184 | ELASTIC PIN M4X30           | O | 1 |   |  |  |
| 181   | JM23300185 | FRICTION WASHER             |   | 2 | * |  |  |
| 181-1 | JM23300185 | FRICTION WASHER             | O | 2 |   |  |  |
| 182   | JM23300186 | DUST-PROOF COVER            |   | 1 |   |  |  |
| 183   | JM23300187 | WING KNOT                   |   | 2 |   |  |  |
| 184   | JM23300188 | HEX BOLT M8X30              |   | 4 |   |  |  |
| 185   | JM23300189 | BIG FLAT WASHER 8           |   | 5 | * |  |  |
| 185-1 | JM23300189 | BIG FLAT WASHER 8           | O | 4 |   |  |  |
| 186   | JM23300240 | GUIDE FENCE                 |   | 1 |   |  |  |
| 187   | JM23300191 | TABLE KERF RIGHT            |   | 1 |   |  |  |
| 188   | JM23300192 | TABLE KERF LEFT             |   | 1 |   |  |  |
| 189   | JM23300193 | LOCKNUT M8                  |   | 1 | * |  |  |
| 189-1 | JM23300193 | LOCKNUT M8                  | O | 1 |   |  |  |
| 190   | JM23300194 | BEVEL POINTER               |   | 1 |   |  |  |
| 191   | JM23300195 | MITER WORKING TABLE         |   | 1 |   |  |  |
| 192   | JM23300196 | INSERT PLATE                |   | 1 |   |  |  |
| 193   | JM23300197 | WING LOCK KNOB              |   | 2 |   |  |  |
| 194   | JM23300350 | BASE COMPLETE               |   | 1 |   |  |  |
| D10   |            | INC. 196                    |   |   |   |  |  |
| 196   | JM23300199 | MITER SCALE LABEL           |   | 1 |   |  |  |
| 197   | JM23300200 | WORKING TABLE PRESS PLATE A |   | 1 |   |  |  |
| 198   | JM23300201 | MITER LOCK ROD              |   | 1 |   |  |  |
| 199   | JM23300202 | MITER LOCK SPRING           |   | 1 |   |  |  |
| 200   | JM23300203 | MITER LOCK PRESS PLATE      |   | 1 |   |  |  |
| 201   | JM23300204 | TABLE TURNING KNOB          |   | 1 |   |  |  |
| 202   | JM23300205 | WORKING TABLE LOCKING PIN   |   | 1 |   |  |  |
| 203   | JM23300206 | HEX BOLT M8X35              |   | 1 |   |  |  |
| 204   | JM23300207 | BUFFER PAD                  |   | 4 |   |  |  |
| 205   | JM23300208 | STRAIN & RELIEF             |   | 1 |   |  |  |
| 206   | JM23300209 | SPONGE C                    |   | 1 | * |  |  |
| 206-1 | JM23300209 | SPONGE C                    | O | 1 |   |  |  |
| 207   | JM23300210 | SPONGE D                    |   | 1 |   |  |  |
| 208   | JM23300360 | ARM COMPLETE                |   | 1 |   |  |  |
| D10   |            | INC. 171                    |   |   |   |  |  |
| 209   | JM23000156 | POWER SUPPLY CORD ASSY EUR  |   | 1 |   |  |  |

|       |            |                        |   |   |   |  |
|-------|------------|------------------------|---|---|---|--|
|       |            | O                      |   |   |   |  |
| 210   | JM23300026 | FLAT WASHER 4          |   | 1 |   |  |
| 211   | JM23300026 | FLAT WASHER 4          |   | 1 |   |  |
| 212   | JM23300026 | FLAT WASHER 4          |   | 1 |   |  |
| 213   | JM23300026 | FLAT WASHER 4          |   | 1 |   |  |
| 214   | JM23300026 | FLAT WASHER 4          |   | 1 |   |  |
| 215   | JM23300026 | FLAT WASHER 4          |   | 2 |   |  |
| 216   | JM23300026 | FLAT WASHER 4          |   | 2 |   |  |
| 217   | JM23300026 | FLAT WASHER 4          |   | 1 |   |  |
| 218   | JM23300026 | FLAT WASHER 4          |   | 1 |   |  |
| 219   | JM23300026 | FLAT WASHER 4          |   | 1 |   |  |
| 220   | JM23300026 | FLAT WASHER 4          |   | 3 |   |  |
| 221   | JM23300026 | FLAT WASHER 4          |   | 1 |   |  |
| 222   | JM23300026 | FLAT WASHER 4          |   | 3 |   |  |
| 223   | JM23300026 | FLAT WASHER 4          |   | 1 |   |  |
| 224   | JM23300026 | FLAT WASHER 4          |   | 4 | * |  |
| 224-1 | JM23300026 | FLAT WASHER 4          | O | 5 |   |  |
| 225   | JM23300026 | FLAT WASHER 4          |   | 1 |   |  |
| 226   | JM23300026 | FLAT WASHER 4          |   | 2 |   |  |
| 227   | JM23300026 | FLAT WASHER 4          |   | 4 |   |  |
| 228   | JM23300026 | FLAT WASHER 4          |   | 1 | * |  |
| 228-1 | JM23300027 | SPRING WASHER 4        | X | 1 |   |  |
| 229   | JM23300026 | FLAT WASHER 4          |   | 2 |   |  |
| 230   | JM23300026 | FLAT WASHER 4          |   | 1 |   |  |
| 231   | JM23300030 | PAN HEAD SCREW M4X10   |   | 1 |   |  |
| 232   | JM23300030 | PAN HEAD SCREW M4X10   |   | 2 |   |  |
| 233   | JM23300030 | PAN HEAD SCREW M4X10   |   | 1 |   |  |
| 234   | JM23300030 | PAN HEAD SCREW M4X10   |   | 1 |   |  |
| 235   | JM23300030 | PAN HEAD SCREW M4X10   |   | 1 |   |  |
| 236   | JM23300030 | PAN HEAD SCREW M4X10   |   | 4 | * |  |
| 236-1 | JM23300030 | PAN HEAD SCREW M4X10   | O | 5 |   |  |
| 237   | JM23300030 | PAN HEAD SCREW M4X10   |   | 2 |   |  |
| 238   | JM23300030 | PAN HEAD SCREW M4X10   |   | 1 |   |  |
| 239   | JM23300030 | PAN HEAD SCREW M4X10   |   | 2 |   |  |
| 240   | JM23300077 | TAPPING SCREW ST4.2X12 |   | 2 |   |  |
| 241   | JM23300077 | TAPPING SCREW ST4.2X12 |   | 4 |   |  |
| 242   | JM23300077 | TAPPING SCREW ST4.2X12 |   | 2 |   |  |
| 243   | JM23300077 | TAPPING SCREW ST4.2X12 |   | 2 |   |  |
| 244   | JM23300088 | TAPPING SCREW ST4.2X16 |   | 4 | * |  |
| 244-1 | JM23300088 | TAPPING SCREW ST4.2X16 | O | 4 |   |  |
| 245   | JM23300088 | TAPPING SCREW ST4.2X16 |   | 4 |   |  |
| 246   | JM23300133 | OUTER STAR WASHER 4    |   | 1 |   |  |
| 247   | JM23300208 | STRAIN & RELIEF        |   | 1 |   |  |
| 248   | JM23300028 | PAN HEAD SCREW M4X12   |   | 1 |   |  |
| 249   | JM23300028 | PAN HEAD SCREW M4X12   |   | 1 |   |  |
| 250   | JM23300028 | PAN HEAD SCREW M4X12   |   | 1 |   |  |
| 251   | JM23300028 | PAN HEAD SCREW M4X12   |   | 1 |   |  |
| 252   | JM23300028 | PAN HEAD SCREW M4X12   |   | 4 |   |  |
| 253   | JM23300028 | PAN HEAD SCREW M4X12   |   | 3 |   |  |
| 254   | JM23300027 | SPRING WASHER 4        |   | 2 |   |  |
| 255   | JM23300027 | SPRING WASHER 4        |   | 3 |   |  |
| 256   | JM23300027 | SPRING WASHER 4        |   | 1 |   |  |



|       |            |                                 |   |   |   |  |
|-------|------------|---------------------------------|---|---|---|--|
| 257   | JM23300027 | SPRING WASHER 4                 |   | 2 |   |  |
| 258   | JM23300027 | SPRING WASHER 4                 |   | 1 | * |  |
| 258-1 | JM23300026 | FLAT WASHER 4                   | X | 1 |   |  |
| 259   | JM23300027 | SPRING WASHER 4                 |   | 2 |   |  |
| 260   | JM23300124 | COUNTERSUNK SCREW M5X14         |   | 4 | * |  |
| 260-1 | JM23300124 | COUNTERSUNK SCREW M5X14         | O | 4 |   |  |
| 261   | JM23300124 | COUNTERSUNK SCREW M5X14         |   | 2 | * |  |
| 261-1 | JM23300124 | COUNTERSUNK SCREW M5X14         | O | 2 |   |  |
| 262   | JM23300124 | COUNTERSUNK SCREW M5X14         |   | 4 | * |  |
| 262-1 | JM23300124 | COUNTERSUNK SCREW M5X14         | O | 4 |   |  |
| 263   | JM23300010 | SPRING WASHER 8                 |   | 4 |   |  |
| 264   | JM23300019 | FLAT WASHER 6                   |   | 4 |   |  |
| 265   | JM23300033 | PAN HEAD SCREW M4X8             |   | 1 |   |  |
| 266   | JM23300033 | PAN HEAD SCREW M4X8             |   | 1 |   |  |
| 267   | JM23300033 | PAN HEAD SCREW M4X8             |   | 1 |   |  |
| 268   | JM23300033 | PAN HEAD SCREW M4X8             |   | 2 |   |  |
| 269   | JM23300093 | FLAT WASHER 10                  |   | 1 |   |  |
| 270   | JM23300093 | FLAT WASHER 10                  |   | 1 |   |  |
| 271   | JM23300093 | FLAT WASHER 10                  |   | 1 | * |  |
| 272   | JM23300093 | FLAT WASHER 10                  |   | 1 |   |  |
| 273   | JM23300079 | CORD CLAMP                      |   | 1 |   |  |
| 274   | JM23300079 | CORD CLAMP                      |   | 2 |   |  |
| 275   | JM23300022 | E RING 5                        |   | 1 | * |  |
| 275-1 | JM27100079 | E RING 5                        | X | 1 |   |  |
| 276   | JM23300022 | E RING 5                        |   | 1 | * |  |
| 276-1 | JM23300042 | E RING 6                        | X | 1 |   |  |
| 277   | JM23300022 | E RING 5                        |   | 1 | * |  |
| 277-1 | JM23300022 | E RING 5                        | O | 1 |   |  |
| 278   | JM27080060 | WARNING LABEL                   |   | 2 | * |  |
| 278-1 | JM2708B060 | CAUTION LABEL                   | X | 2 |   |  |
| 279   | JM23300121 | TABLE LOCKING LEVER             |   | 1 |   |  |
| 280   | JM23300169 | HEX BOLT M8X50                  |   | 1 |   |  |
| 281   | JM23300226 | RETAINING RING                  |   | 1 | * |  |
| 281-1 | JM23300226 | RETAINING RING                  | O | 1 |   |  |
| 282   | JM23300227 | PRESS BUTTON CAP L              |   | 1 | * |  |
| 282-1 | JM23300227 | PRESS BUTTON CAP L              | O | 1 |   |  |
| 283   | JM23300246 | LIFTING RACK                    |   | 1 |   |  |
| 284   | JM23300124 | COUNTERSUNK SCREW M5X14         |   | 2 | * |  |
| 284-1 | JM23300124 | COUNTERSUNK SCREW M5X14         | O | 2 |   |  |
| 285   | JM23300247 | RING                            |   | 2 | * |  |
| 286   | JM23300241 | LIFTING GEAR                    |   | 1 |   |  |
| 287   | JM23300242 | LIFTING KNOB                    |   | 1 |   |  |
| 288   | JM23300243 | FIX BOLT                        |   | 1 | * |  |
| 288-1 | JM23300243 | FIX BOLT                        | O | 1 |   |  |
| 289   | JM23310001 | SUB FENCE COMPLETE              |   | 1 |   |  |
| D10   |            | INC. 312                        |   |   |   |  |
| 290   | JM23300237 | COUTERSUNK HEAD SCREW M6X<br>35 |   | 1 |   |  |
| 291   | JM23100110 | HEX LOCK NUT M6                 |   | 1 | * |  |
| 291-1 | JM23100110 | HEX LOCK NUT M6                 | O | 1 |   |  |
| 292   | JM23300238 | FIX PLATE                       |   | 1 |   |  |
| 293   | JM23100033 | PAN HEAD SCREW M4X12            |   | 1 | * |  |

|       |            |                                 |   |   |   |  |  |
|-------|------------|---------------------------------|---|---|---|--|--|
| 293-1 | JM23300028 | PAN HEAD SCREW M4X12            | X | 1 |   |  |  |
| 294   | JM23000137 | SPRING WASHER4                  |   | 1 | * |  |  |
| 294-1 | JM23300027 | SPRING WASHER 4                 | X | 1 |   |  |  |
| 295   | JM23100071 | THIN FLAT WASHER 6              |   | 1 | * |  |  |
| 295-1 | JM23300149 | THIN FLAT WASHER 6              | X | 1 |   |  |  |
| 296   | JM27080108 | LABEL(RIVING KNIFE SETTING)     |   | 1 |   |  |  |
| 297   | JM23300093 | FLAT WASHER 10                  |   | 1 |   |  |  |
| 298   | JM23300026 | FLAT WASHER 4                   |   | 1 |   |  |  |
| 299   | JM23300150 | WASHER                          |   | 1 |   |  |  |
| 300   | JM00000362 | INSERT BAR                      |   | 1 |   |  |  |
| 301   | JM2318A058 | CAUTION LABEL                   |   | 1 |   |  |  |
| 302   | JM23180059 | CAUTION LABEL                   |   | 1 |   |  |  |
| 303   | JM23300008 | RIP FENCE ASSY                  |   | 1 |   |  |  |
| D10   |            | INC. 304                        |   |   |   |  |  |
| 304   | 810191-7   | CAUTION LABEL                   |   | 1 |   |  |  |
| 305   | JM23300217 | LOW PROTECTION GUARD            |   | 1 |   |  |  |
| D10   |            | INC. 306                        |   |   |   |  |  |
| 306   | JM23380059 | LOGO LABEL                      |   | 1 |   |  |  |
| 307   | JM23300167 | HEX NUT M8                      |   | 1 |   |  |  |
| 308   | JM23300167 | HEX NUT M8                      |   | 1 |   |  |  |
| 309   | JM23300189 | BIG FLAT WASHER 8               |   | 1 |   |  |  |
| 311   | JM23100502 | WISE ASSEMBLY                   |   | 1 |   |  |  |
| 312   | JM23380067 | CAUTION LABEL                   |   | 1 |   |  |  |
| 313   | JM23100500 | HOLDER                          |   | 2 |   |  |  |
| 314   | JM23180056 | CAUTION LABEL                   |   | 1 |   |  |  |
| 315   | JM23380098 | NAME PLATE                      |   | 1 |   |  |  |
| 316   | JM23300142 | COMPRESSION SPRING              |   | 1 |   |  |  |
| 317   | JM23300042 | E RING 6                        |   | 1 |   |  |  |
| A01   | JM23300006 | SAW BLADE                       |   | 1 | * |  |  |
| A01-1 | JM23300006 | SAW BLADE                       | O | 1 |   |  |  |
| A02   | JM23300008 | RIP FENCE ASSY                  |   | 1 | * |  |  |
| C10   | JM23300228 | FENCE KNOB                      |   | 1 | * |  |  |
| C20   | JM23300229 | FENCE ORIENTAION PIN            |   | 1 | * |  |  |
| C30   | JM23300230 | FENCE BRACKET                   |   | 1 | * |  |  |
| C40   | JM23300231 | FENCE                           |   | 1 | * |  |  |
| C50   | JM23300232 | FENCE LOCK PLATE                |   | 1 | * |  |  |
| C60   | JM23300233 | LOCKING BRACKET                 |   | 1 | * |  |  |
| C70   | JM23300234 | ADJUSTABLE SCREW                |   | 1 | * |  |  |
| C80   | JM23300235 | FENCE LOCK KNOB                 |   | 1 | * |  |  |
| C90   | JM23300019 | FLAT WASHER 6                   |   | 1 | * |  |  |
| A03   | JM23300217 | LOW PROTECTION GUARD            |   | 1 | * |  |  |
| A04   | JM23100197 | BOX WRENCH 13-3                 |   | 1 |   |  |  |
| A05   | JM23100500 | HOLDER                          |   | 2 | * |  |  |
| A06   | JM23100501 | DUST BAG ASSEMBLY               |   | 1 |   |  |  |
| A07   | JM23100502 | WISE ASSEMBLY                   |   | 1 | * |  |  |
| A08   | JM27000086 | PUSH STICK                      |   | 1 |   |  |  |
| A09   | JM27000328 | TRIANGLE PLATE                  |   | 1 |   |  |  |
| A10   | JM23100144 | RING 30                         |   | 1 |   |  |  |
| E01   | JM23310001 | SUB FENCE COMPLETE              |   | 1 | * |  |  |
| E02   | JM23300237 | COUTERSUNK HEAD SCREW M6X<br>35 |   | 1 | * |  |  |
| E03   | JM23100110 | HEX LOCK NUT M6                 |   | 1 | * |  |  |

|     |            |                      |  |   |   |  |  |
|-----|------------|----------------------|--|---|---|--|--|
| E04 | JM23300238 | FIX PLATE            |  | 1 | * |  |  |
| E05 | JM23100033 | PAN HEAD SCREW M4X12 |  | 1 | * |  |  |
| E06 | JM23000137 | SPRING WASHER4       |  | 1 | * |  |  |
| E07 | JM23100071 | THIN FLAT WASHER 6   |  | 1 | * |  |  |

Please state Parts No. when your order.

Print Date 26.10.2023