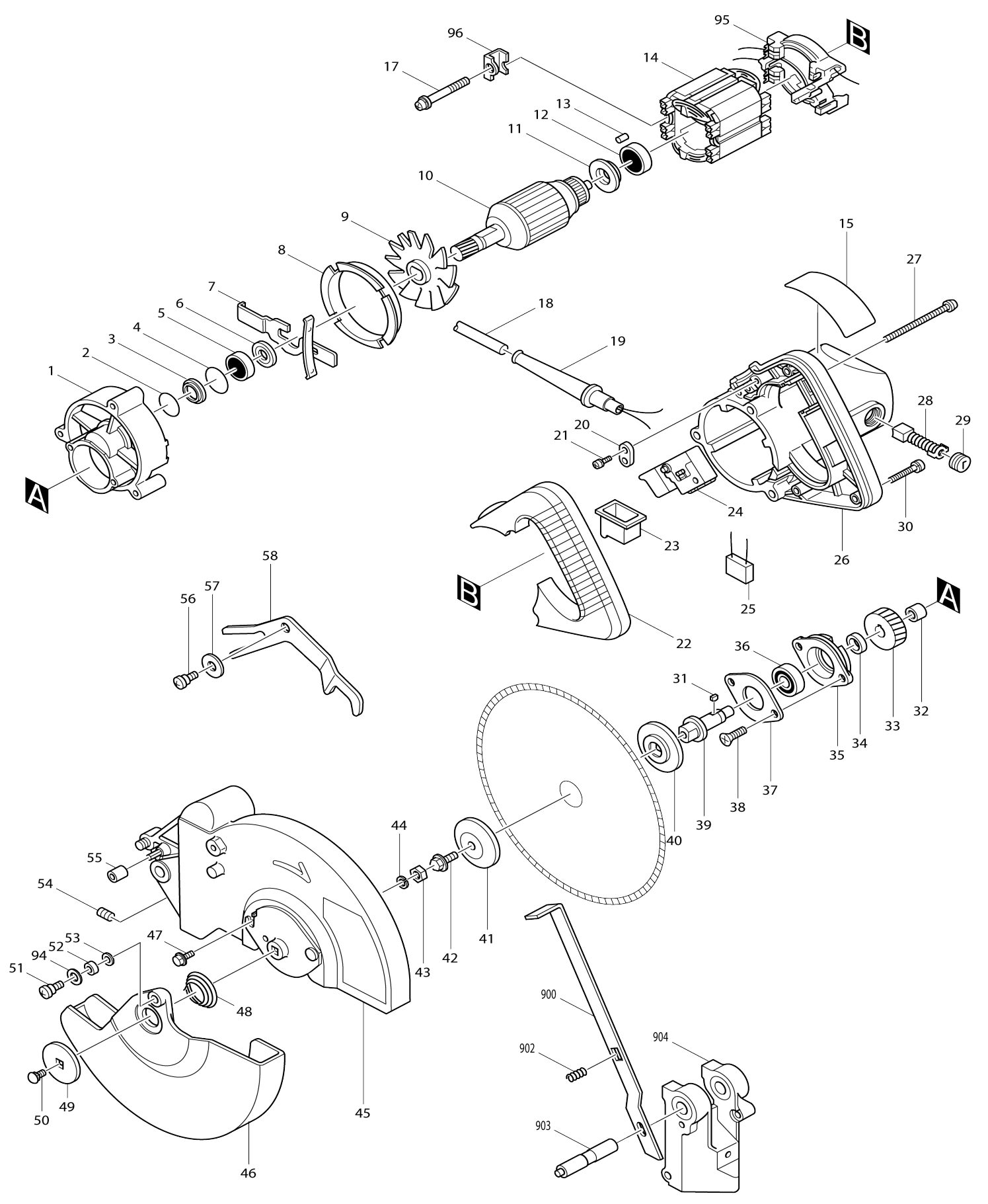
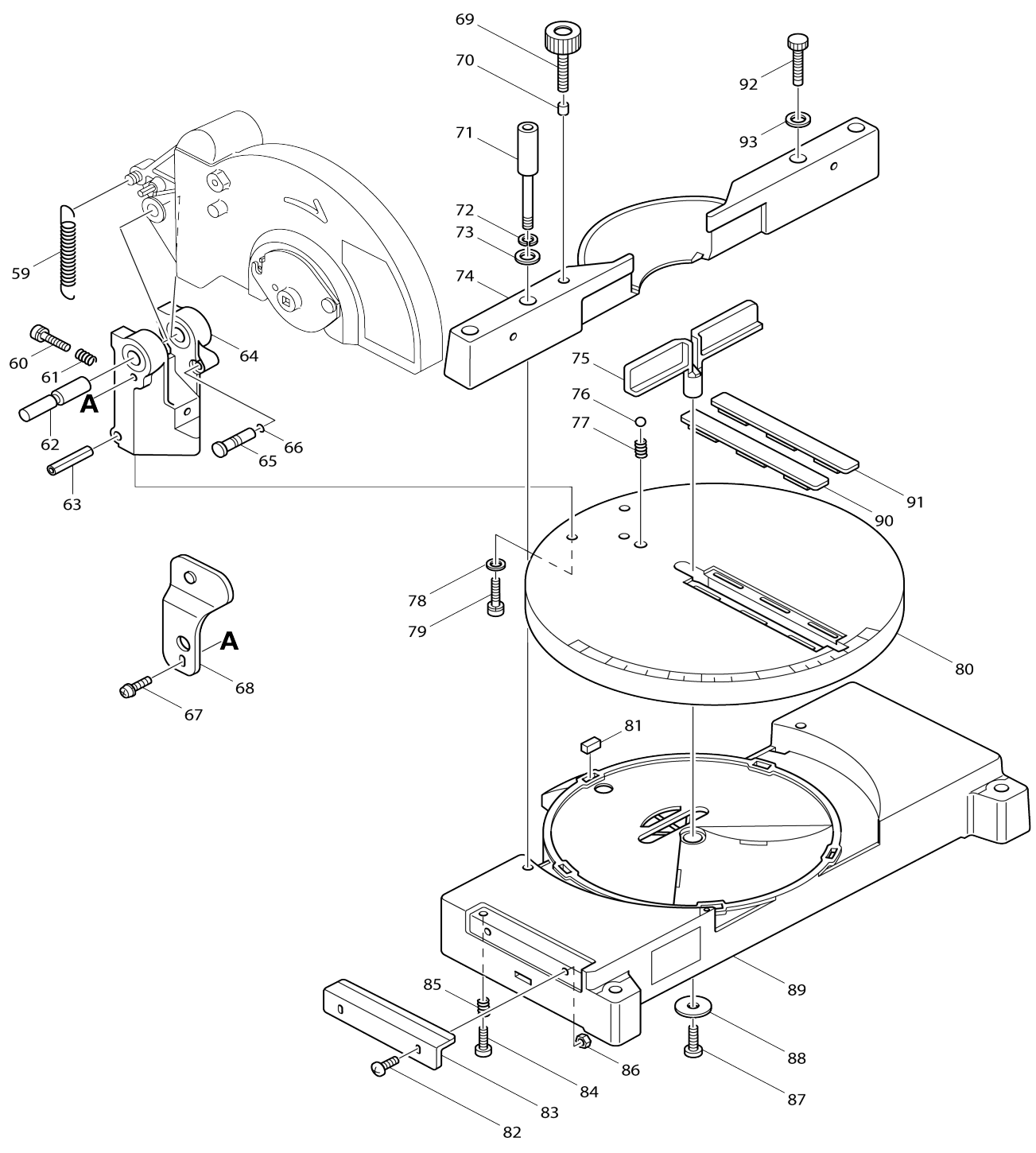


Model No.LS0810 MITER SAW 210MM



Model No. LS0810 MITER SAW 210MM



Model No.LS0810 MITER SAW 210MM

Item No.	Parts No.	Description	Interchangability	Q'ty	New/Old	Note1	Note2
001	157402-2	GEAR HOUSING		1			
D10		INC. 4					
002	213407-3	O RING 26		1			
003	343318-9	WASHER 23		1			
004	213406-5	O RING 30		1			
005	211066-7	BALL BEARING 6200LLB		1			
006	253769-7	FLAT WASHER 10		1			
007	163109-0	SHAFT LOCK		1			
008	343319-7	BAFFLE PLATE		1			
009-2	241838-6	FAN 68		1	*		
009-3	240007-6	FAN 68	O	1			
010A_	512867-9	ARMATURE ASS'Y 200V		1			
D10		INC. 5,6,9,11,12					
011	681625-5	INSULATION WASHER		1			
012	211031-6	BALL BEARING 608LLB		1			
013	263014-2	RUBBER PIN 4		1			
014E_	528776-2	FIELD ASS'Y 220V		1	*		
014E1	634133-5	FIELD 220V	X	1			
015	855942-1	NAME PLATE LS0810		1			
017-1	911285-2	PAN HEAD SCREW M5X60		2			
018Z_	665865-3	POWER SUPPLY CORD 1.0-2-2.5		1			
019B_	682516-3	CORD GUARD 9.3-85		1	*		
019B1	682504-0	CORD GUARD 10-85	O	1			
020C_	687031-2	STRAIN RELIEF		1			
021	911133-5	PAN HEAD SCREW M4X18		2			
022	410650-7	HANDLE COVER		1			
023	421142-1	SWITCH COVER		1			
024	651333-2	SWITCH SGE210R-1		1	*		
024-1	651245-9	SWITCH SGE115F-1	X	1	*		
024-2	651245-9	SWITCH SGE115F-1	O	1			
025D1	645200-1	NOISE SUPPRESSOR		1			
026D_	159839-9	MOTOR HOUSING		1			
C10	643603-3	BRUSH HOLDER 6-10		2	*		
C11	643609-1	BRUSH HOLDER 6-10	O	2			
C20	810811-3	CAUTION LABEL		1			
D10		INC. 13					
027	911293-3	PAN HEAD SCREW M5X70		3			
028B_	181030-1	CARBON BRUSH CB-100		1	*		
028B1	194974-6	CARBON BRUSH SET CB-100	O	1			
029	643600-9	BRUSH HOLDER CAP 6-10		2			
030	911148-2	PAN HEAD SCREW M4X25		4			
031	254011-9	WOODRUFF KEY 4		1			
032	212004-2	NEEDLE BEARING 810		1			
033	221602-1	HELICAL GEAR 44		1			
034	257010-0	RING 12		1			
035	315875-7	BEARING BOX		1			
036	211106-1	BALL BEARING 6201LLB		1	*		

036-1	211144-3	BALL BEARING 6201LLB	O	1	*		
036-2	211106-1	BALL BEARING 6201LLB	O	1			
037	285659-6	BEARING RETAINER 48		1			
038	251316-8	+ COUNTERSUNK HEAD SCREW M4X20		2			
039	321904-6	SPINDLE		1			
040	224233-5	INNER FLANGE 45		1			
041	224234-3	OUTER FLANGE 45		1			
042	265226-3	HEX. FLANGE HEAD BOLT M6X17		1			
043	931202-6	HEX. NUT M5		1			
044	942101-7	SPRING WASHER 5		1			
045D_	151446-4	BLADE CASE		1	*		
C10	810816-3	CAUTION LABEL		1	*		
C20	817667-5	CAUTION LABEL		1	*		
C30	255104-5	RIVET 8		1	*		
C40	343467-2	CENTER COVER		1	*		
C50	256736-1	PIN 8		1	*		
C60	951187-0	SPRING PIN 5-55		1	*		
045D 1	154918-8	BLADE CASE COMPLETE	<	1			
C10	810816-3	CAUTION LABEL		1			
C20	817667-5	CAUTION LABEL		1			
C30	255104-5	RIVET 8		1			
C40	343467-2	CENTER COVER		1			
C50	256736-1	PIN 8		1			
C60	951187-0	SPRING PIN 5-55		1			
046-2	414323-4	SAFETY COVER		1	*		
046-3	419479-8	SAFETY COVER	<	1			
047	265323-5	HEX. FLANGE HEAD BOLT M5X10		1			
048	231934-8	SPIRAL SPRING 26		1			
049	253977-0	FLAT WASHER 6		1			
050	923901-4	CAP SQUARE NECK BOLT M5X8		1			
051	251331-2	+ PAN HEAD SCREW M6		1			
052-1	257157-0	RING 8		1			
053-1	253047-5	FLAT WASHER 6		1			
054	265832-4	H.S.SET SCREW(FLAT POINT)M5X 8		1			
055	262513-1	RUBBER SLEEVE 5		2			
056	251331-2	+ PAN HEAD SCREW M6		1			
057	253022-1	FLAT WASHER 8		1			
058	343466-4	GUIDE ARM		1			
059	231771-0	TENSION SPRING 9		2	*		
059-1	231815-6	TENSION SPRING 10	S	2			
060	251210-4	+ PAN HEAD SCREW M5X25		1			
061	231038-6	COMPRESSION SPRING 6		1			
062A_	322110-6	HINGE PIN 12		1			
063	951234-7	SPRING PIN 6-55		1	*		
063-1	951225-8	SPRING PIN 6-40	X	1			
064A_	152311-0	ARM COMPLETE		1			
C10	951157-9	SPRING PIN 5-16		1			
065	321906-2	STOPPER PIN		1			
066	213021-5	O RING 5		1			

067	911216-1	PAN HEAD SCREW M5X14		1		
068	163272-9	SUPPORTER		1		
069	251872-8	SCREW M6X40		1		
070	263003-7	NYLON PIN 5		1		
071	322051-6	BOLT M6		1		
072	942151-2	SPRING WASHER 6		1		
073-1	941151-9	FLAT WASHER 6		2		
074-1	414232-7	GUIDE FENCE		1		
075-1	414233-5	FENCE PLATE		1		
076	216004-4	STEEL BALL 7.9		1		
077	231038-6	COMPRESSION SPRING 6		1		
078	941101-4	FLAT WASHER 5		3		
079	922241-7	HEX. SOCKET HEAD BOLT M5X25		3		
080	315868-4	TURN BASE		1		
081	443067-9	FELT		5		
082	251314-2	+ SCREW M4X12		2		
083	342948-3	ADJUSTING PLATE		1		
084	911246-2	PAN HEAD SCREW M5X28		2		
085	231038-6	COMPRESSION SPRING 6		2		
086	931102-0	HEX. NUT M4		2		
087	912226-1	COUNTERSUNK HEAD SCREW M5 X18		1		
088	253930-6	FLAT WASHER 7		1		
089E1	151445-6	BASE COMPLETE		1	*	
C10	214154-9	PLANE BEARING 14		1	*	
C20	810812-1	CAUTION LABEL		1	*	
089E2	154913-8	BASE COMPLETE	<	1		
C10	214154-9	PLANE BEARING 14		1		
C20	810812-1	CAUTION LABEL		1		
090	410645-0	KERF BOARD		1		
091	410645-0	KERF BOARD		1		
092-1	922376-4	HEX. SOCKET HEAD BOLT M6X55		2		
093-1	941151-9	FLAT WASHER 6		2		
094	253139-0	FLAT WASHER 8		1		
095	632121-6	SUPPORT COMPLETE		1	*	
095-1	632675-3	SUPPORT COMPLETE	X	1		
096	343657-7	RETAINER		2		
097	344631-8	SPRING HOLDER		1		
400	252628-2	WING NUT M6		1		
401	164806-1	HOLDER		1		
402	271271-8	KNOB 40		1		
404-1	122351-2	DUST BAG ASS'Y		1		
405-1	410985-6	FASTENER		1	*	
405-2	410602-8	FASTENER	O	1		
406	782209-3	SOCKET WRENCH 9		1		
407C_	792345-7	T.C.T. SAW BLADE 210		1		
408	122344-9	VICE ASS'Y		1		
409	192932-6	SUB PLATE ASS'Y		1		
900-1	164837-0	LOCK LEVER		1		
901-1	961018-5	STOP RING E-5		1		
902-1	231223-1	COMPRESSION SPRING 6		1		
903	322110-6	HINGE PIN 12		1		

904	152311-0	ARM COMPLETE		1			
905	911138-5	P.H.SCREW M4X20 WITH WR		1			

Please state Parts No. when your order.

Print Date 10/13/2023