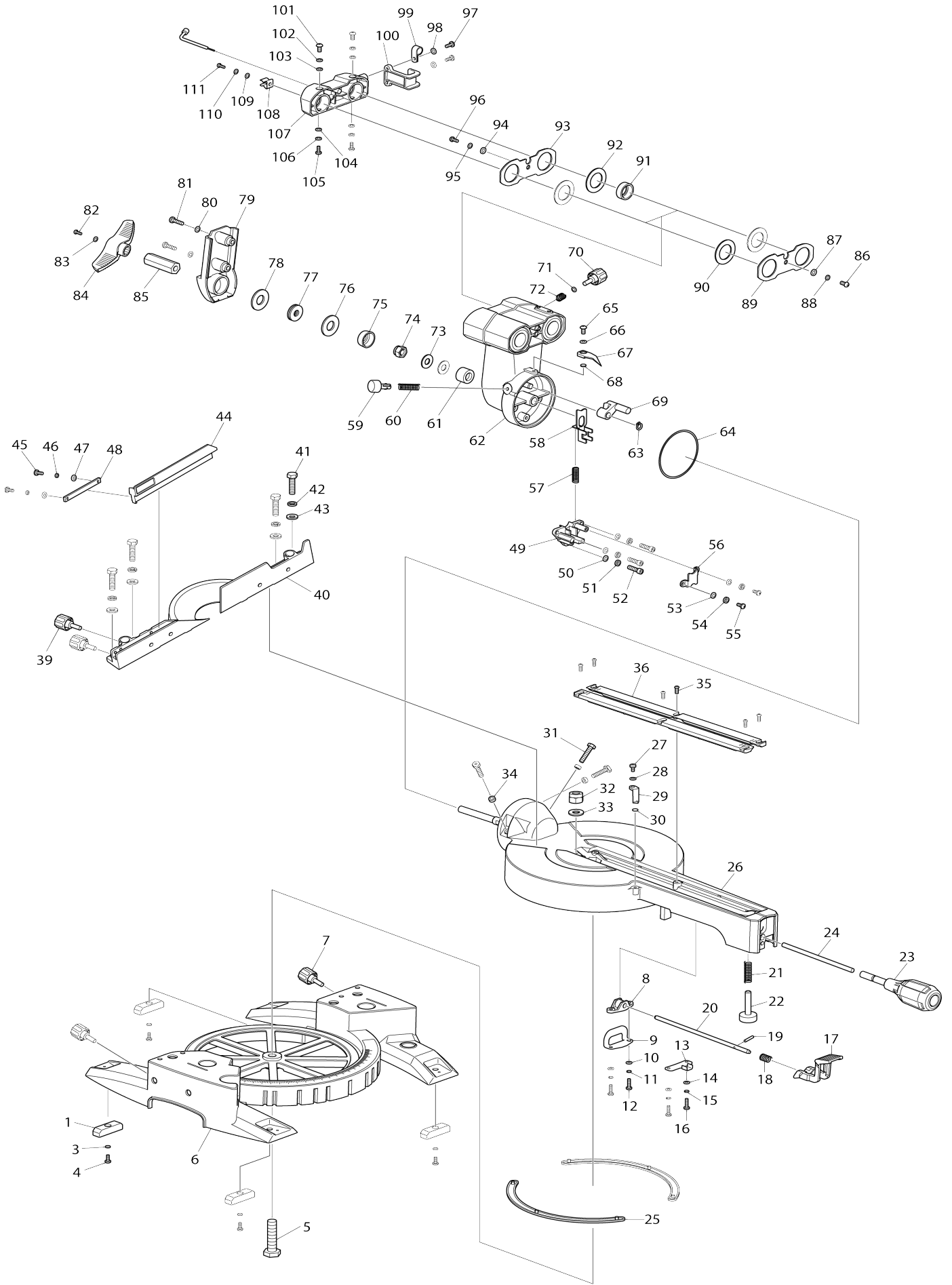
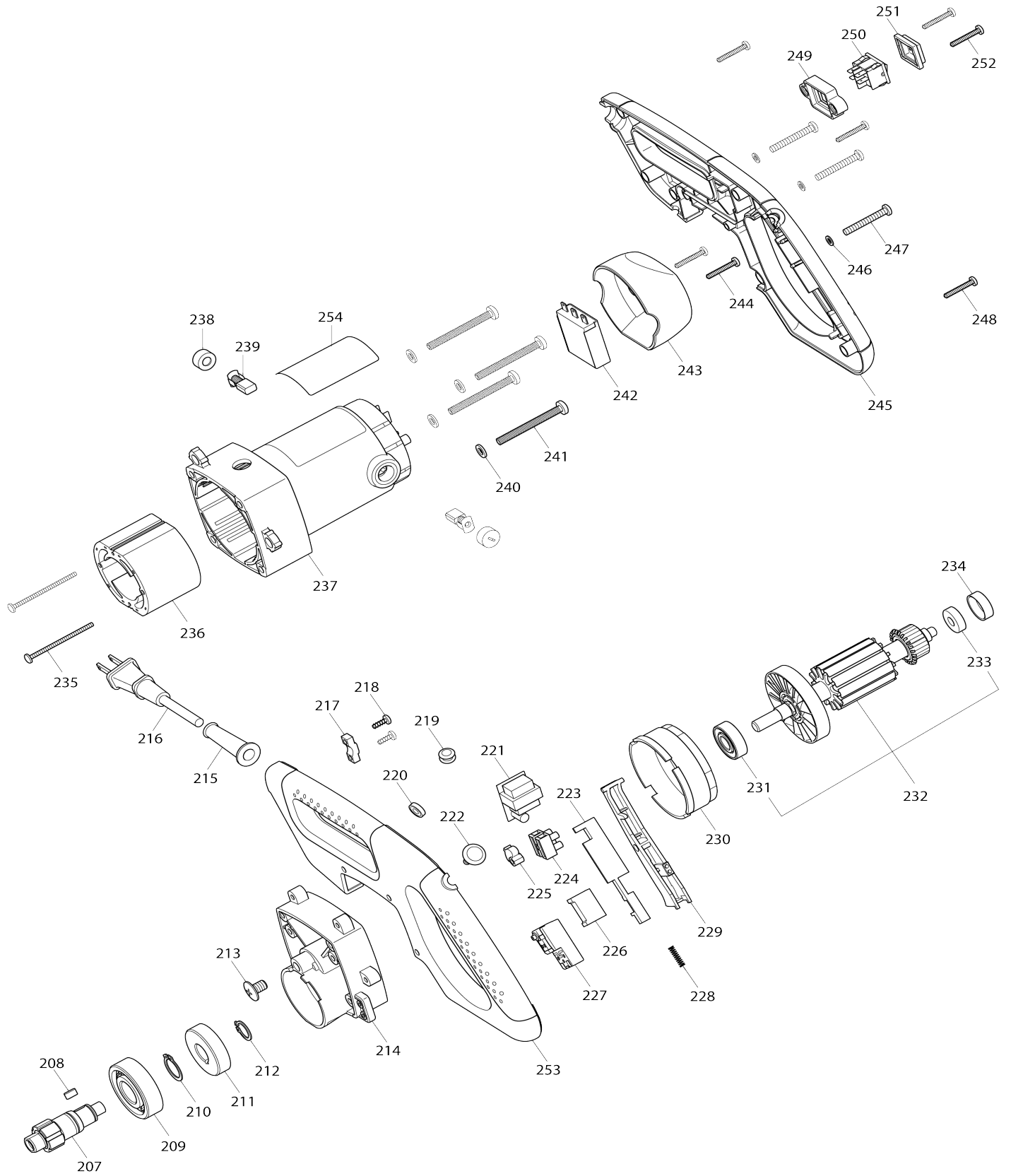


Model No.LS0815FL SLIDE COMPOUND MITER SAW 216MM



Model No.LS0815FL SLIDE COMPOUND MITER SAW 216MM



Model No.LS0815FL SLIDE COMPOUND MITER SAW 216MM

Item No.	Parts No.	Description	Interchangability	Q'ty	New/Old	Note1	Note2
001	JM23500132	BUFFER PAD		4			
002	JM23000127	HOLDER		2			
003	JM23100016	FLAT WASHER 4		4			
004	JM23500008	CROSS HEAD SCREW M4X10		4			
005	JM23500009	PIVOT SHAFT		1			
006	JM23510001	BASE COMPLETE		1			
C10	JM23500010	MITER SCALE LABEL		1	*		
C20	JM2708A060	CAUTION LABEL		2	*		
C30	JM23500011	BASE		1	*		
C40	JM2318A058	CAUTION LABEL		1	*		
007	JM23100013	KNOB FOR EXT.WING		2	*		
007-1	JM00000074	PAN HEAD SCREW M6X20	X	2			
008	JM23100025	WORKING TABLE LOCKING BRACKET		1			
009	JM23100020	LOCK PLATE B		1			
010	JM23100016	FLAT WASHER 4		2			
011	JM23100015	SPRING WASHER 4		2			
012	JM23100014	CROSS HEAD SCREW M4X15		2	*		
012-1	JM23100033	PAN HEAD SCREW M4X12	<	2			
013	JM23100018	LOCK PLATE A		1			
014	JM23100016	FLAT WASHER 4		2			
015	JM23100015	SPRING WASHER 4		2			
016	JM23100014	CROSS HEAD SCREW M4X15		2	*		
016-1	JM23100033	PAN HEAD SCREW M4X12	<	2			
017	JM23100023	PRESS PLATE		1			
018	JM23100021	LOCK SPRING		1			
019	JM23100022	LOCK PIN		1			
020	JM23500015	LOCK SHAFT B		1			
021	JM23500014	SPRING11		1			
022	JM23500013	ADJUSTABLE ROD		1			
023	JM23100027	MITER LOCKING HANDLE		1			
024	JM23500016	LOCK SHAFT A		1			
025	JM23500012	FRICITION PLATE		2			
026	JM23510002	WORKING TABLE COMPLETE		1			
C10	JM23500017	BEVEL SCALE LABEL		1	*		
C20	JM23500018	LOCKING ROD		1	*		
C30	JM23500019	WORKING TABLE		1	*		
C40	JM23500020	ELASTIC PIN 4X30		1			
C50	JM23500021	HEX NUT M10		1			
027	JM23500008	CROSS HEAD SCREW M4X10		1	*		
027-1	JM23100033	PAN HEAD SCREW M4X12	X	1			
028	JM23100016	FLAT WASHER 4		1			
029	JM23100030	MITER POINTER		1			
030	JM23500053	EXTERNAL TOOTHED LOCK WASHER 4		1			
031	JM23100034	HEX BOLT M6X28		3	*		
031-1	JM23100034	HEX BOLT M6X28	O	1			
032	JM23500023	LOCKNUT M8		1			

033	JM23500022	FLAT WASHER 8		1			
034	JM23100035	ANTI-LOOSEN RING		3	*		
034-1	JM23100035	ANTI-LOOSEN RING	O	1			
035	JM23500008	CROSS HEAD SCREW M4X10		6	*		
035-1	JM23100033	PAN HEAD SCREW M4X12	X	6			
036	JM23100029	TABLE INSERT		2	*		
036-1	JM00000430	KERF BOARD	O	2			
039	JM23100013	KNOB FOR EXT.WING		2			
040	JM23500026	RIP FENCE		1	*		
040-1	JM00000081	RIP FENCE	X	1			
041	JM23100062	HEX BOLT M8X30		4			
042	JM23100061	SPRING WASHER 8		4			
043	JM23100060	FLAT WASHER 8		4			
044	JM23510013	SUB FENCE COMPLETE		1	*		
C10	JM23500127	SUB FENCE		1	*		
C20	JM23580063	CAUTION LABEL		1	*		
044-1	JM00000080	SUB FENCE COMPLETE	X	1			
C10	JM23500127	SUB FENCE		1	*		
C20	JM23580063	CAUTION LABEL		1	*		
045	JM23100065	PAN HEAD SCREW M4X8		2			
046	JM23100015	SPRING WASHER 4		2			
047	JM23100016	FLAT WASHER 4		2			
048	JM23500024	KEY		1			
049	JM23500095	45DEGREE LIMIT BRACKET		1			
050	JM23100007	FLAT WASHER 5		3			
051	JM23100149	SPRING WASHER 5		3			
052	JM23500096	H.S.BOLT M5X14		3			
053	JM23100016	FLAT WASHER 4		2			
054	JM23100015	SPRING WASHER 4		2			
055	JM23500008	CROSS HEAD SCREW M4X10		2			
056	JM23500097	45DEGREE COVER		1			
057	JM23500094	SPRING8		1			
058	JM23500093	45DEGREE LIMIT PLATE		1			
059	JM23100051	LIMITED KNOB		1			
060	JM23100049	MITER PRESSION SPRING		1			
061	JM23100052	CLAMP PLATE		1			
062	JM23510008	SUPPORT ARM COMPLTE		1			
C10	JM23100087	HEX SOCKET SET SCREW M6X8		2	*		
C20	JM23500089	LINEAR BEARING		3	*		
C30	JM23100081	BUFFER A		2	*		
C40	JM23500090	SUPPORT ARM		1	*		
C50	JM23500091	ANGLE LIMIT		1	*		
C60	JM23500092	BEARING GASKET		1	*		
D10		INC. 261-266					
063	JM23500079	RETAINING RING 8		1			
064	JM23500078	FRICTION RING		1			
065	JM23100014	CROSS HEAD SCREW M4X15		1	*		
065-1	JM23100033	PAN HEAD SCREW M4X12	<	1			
066	JM23100016	FLAT WASHER 4		1			
067	JM23100048	BEVEL POINTER		1			
068	JM23500053	EXTERNAL TOOTHED LOCK WASHER 4		1			

069	JM23500080	90DEGREE LIMIT BRACKET		1		
070	JM23100086	SLIDING BAR LOCKING KNOB		1		
071	JM23100190	SPECIAL WASHER 6		1		
072	JM23100088	PRESSURE SPRING		1		
073	JM23100010	FLAT WASHER 10		2		
074	JM23100009	HEX LOCK NUT M10		1		
075	JM23100053	BOWL TYPE PLATE		1		
076	JM23100055	BIG FLAT WASHER 10X26X2.5		1		
077	JM23100054	SURFACE BEARING		1		
078	JM23100055	BIG FLAT WASHER 10X26X2.5		1		
079	JM23500086	SUPPORT ARM COVER		1		
080	JM23100007	FLAT WASHER 5		2		
081	JM23100006	CROSS HEAD SCREW M5X20		2		
082	JM23100019	CROSS HEAD SCREW M4X18		1		
083	JM23100016	FLAT WASHER 4		1		
084	JM23500087	BEVEL LOCKING HANDLE		1		
085	JM23500088	HEX NUT		1		
086	JM23500081	CROSS HEAD SCREW M5X		1		
087	JM23100007	FLAT WASHER 5		1		
088	JM23100149	SPRING WASHER 5		1		
089	JM23500082	SUPPORT ARM COVER		1		
090	JM23500083	DUSTPROOF RING		2		
091	JM23500084	BEARING GASKET		1	*	
092	JM23500083	DUSTPROOF RING		2		
093	JM23500082	SUPPORT ARM COVER		1		
094	JM23100007	FLAT WASHER 5		1		
095	JM23100149	SPRING WASHER 5		1		
096	JM23500081	CROSS HEAD SCREW M5X		1		
097	JM23100019	CROSS HEAD SCREW M4X18		2	*	
097-1	JM23100019	CROSS HEAD SCREW M4X18	O	1		
098	JM23100016	FLAT WASHER 4		2	*	
098-1	JM23100016	FLAT WASHER 4	O	1		
099	JM23100072	CORD CLAMP		1		
100	JM23500066	CABLE HOLDER BRACKET		1		
101	JM23500081	CROSS HEAD SCREW M5X		2		
102	JM23100149	SPRING WASHER 5		2		
103	JM23100007	FLAT WASHER 5		2		
104	JM23100007	FLAT WASHER 5		2		
105	JM23500081	CROSS HEAD SCREW M5X		2		
106	JM23100149	SPRING WASHER 5		2		
107	JM23500085	SLIDING BAR BRACKET		1		
108	JM23100091	WRENCH CLIP		1		
109	JM23100016	FLAT WASHER 4		1		
110	JM23100015	SPRING WASHER 4		1		
111	JM23100014	CROSS HEAD SCREW M4X15		1	*	
111-1	JM23100033	PAN HEAD SCREW M4X12	<	1		
113	JM23100103	WHEEL LOCK RING		1		
114	JM23100102	GUARD WHEEL		1		
115	JM23500031	SQUARE NECK BOLT M5X12		1		
116	JM23510004	LOW BLADE GUARD		1	*	
C10	JM23500032	LOW BLADE GUARD		1	*	
C20	JM23500033	LOW GUARD SUPPORT PLATE		1	*	

C30	JM23100104	FLAT WASHER 5		3	*		
C40	JM23100101	GUARD RIVET		3	*		
116-1	JM23510024	LOW BLADE GUARD	<	1			
117	JM23500035	GUARD SPRING		1			
118	JM23500134	HEX BOLT M8X15		1			
119	JM23100113	CROSSHEAD SCREW FOR GUARD		1			
120	JM23500036	LOW GUARD FIX PLATE		1			
121	JM23500037	GUARD LINKAGE CENTER PLATE		1			
122	JM23100007	FLAT WASHER 5		1			
123	JM23100141	HEX LOCK NUT 5		1			
124	JM23500135	BLADE BOLT		1			
125	JM23500038	BLADE FLANGE		2	*		
125-1	JM23500038	BLADE FLANGE	O	1			
126	JM23100144	RING 30		1	*		
128	JM23500039	DUST PORT		1			
129	JM23100193	PIN C		1	*		
129-1	JM23500040	CROSS HEAD SCREW ST4.2X12	X	1			
130	JM23100193	PIN C		1	*		
130-1	JM23500040	CROSS HEAD SCREW ST4.2X12	X	1			
131	JM23500034	CROSS HEAD SCREW		1			
132	JM23510005	UP BLADE GUARD COMPLETE		1			
C10	JM23500046	UP BLADE GUARD		1	*		
C20	JM23100114	LINK PIN		1	*		
C30	JM23100147	BUFFER		1	*		
D10		INC. 271-273					
133	JM23500047	GUARD INSERT		1			
134	JM23100016	FLAT WASHER 4		2			
135	JM23100015	SPRING WASHER 4		2			
136	JM23100014	CROSS HEAD SCREW M4X15		2	*		
136-1	JM23100033	PAN HEAD SCREW M4X12	<	2			
137	JM23500048	LOCK PLATE		1			
138	JM23100138	LOCK COVER		1			
139	JM23500050	LOCK PLATE		1	*		
139-1	JM23500139	LOCK PLATE	<	1			
140	JM23500049	LOCK SPRING5		1			
141	JM23100119	LIMITED KNOB		1			
142	JM23100035	ANTI-LOOSEN RING		1			
143	JM23500051	HEX BOLT M6X25		1			
144	JM23100035	ANTI-LOOSEN RING		1			
145	JM23500052	H.S.SET SCREW		2			
146	JM23100098	LINK SLEEVE		1			
147	JM23510003	LINK COMPLETE		1			
C10	JM23500028	LINK		1			
C20	JM23500029	LINK PIN		1			
C30	JM23500030	BEARING 695Z		1			
148	JM23100071	THIN FLAT WASHER 6		1			
149	JM23100115	RETAINING RING 5		1			
150	JM23500027	LOCK THIN NUT		1			
151	JM23100071	THIN FLAT WASHER 6		1			
152	JM23100098	LINK SLEEVE		1			
153	JM23500055	LINK FIX PLATE		1			

154	JM23500054	SQUARE NECK BOLT M6X14		1		
155	JM23500071	H.S.BOLT M6X12		1		
156	JM23100151	SPRING WASHER 6		1		
157	JM23100190	SPECIAL WASHER 6		1		
158	JM23500056	CROSS HEAD SCREW M4X28		2		
159	JM23100016	FLAT WASHER 4		2		
160	JM23500057	LAMP COVER		1		
161	JM23500058	LAMP LENZ		1		
162	JM23500059	SEALING RING		1		
163	JM23510006	LAMP ASSY		1		
C10	JM23500060	REFLECTOR		1		
C20	JM23500061	LIGHT		1		
164	JM23500128	FLAT WASHER 3		2		
165	JM23500062	S.T.CROSS HEAD SCREW 9X13		2		
166	JM23100019	CROSS HEAD SCREW M4X18		2	*	
166-1	JM23100019	CROSS HEAD SCREW M4X18	O	1		
167	JM23100016	FLAT WASHER 4		2	*	
167-1	JM23100016	FLAT WASHER 4	O	1		
168	JM23100072	CORD CLAMP		1		
169	JM23500066	CABLE HOLDER BRACKET		1		
170	JM23500008	CROSS HEAD SCREW M4X10		1		
171	JM23100016	FLAT WASHER 4		1		
172	JM23500077	BRACKET BACK COVER		1		
173	JM23510007	UP BLADE GUARD BRACKET COM P		1		
C10	JM23500074	SLIDING BAR		2	*	
C20	JM23500075	ELASTIC PIN 5		2	*	
C30	JM23500076	UP BLADE GUARD BRACKET		1	*	
C40	JM23180059	CAUTION LABEL		1	*	
174	JM23500064	CONNECTION SHAFT		1		
175	JM23500072	SPRING32		1		
176	JM23500022	FLAT WASHER 8		1		
177	JM23500071	H.S.BOLT M6X12		1		
178	JM23100097	PIN CAP		1		
179	JM23500065	SPRING BRACKET		1		
180	JM23500063	SPRING SUPPORT PIN		1		
181	JM23500070	LASER		1		
182	JM23500068	H.S.BOLT M4X8		2	*	
182-1	JM23100146	H.S.BOLT M4X10	X	2		
183	JM23500069	H.S.SET SCREW		1		
184	JM23100016	FLAT WASHER 4		2		
185	JM23500067	LASER BRACKET		1		
186	JM23100016	FLAT WASHER 4		1		
187	JM23100067	H.S.BOLT M4X12		1	*	
187-1	JM23100146	H.S.BOLT M4X10	X	1		
188	JM23500073	LASER MOVING PLATE		1		
189	JM23100093	PIN C		1	*	
189-1	JM23100193	PIN C	<	1		
190	JM23100150	SEALING RING		1		
191	JM23100096	DEPTH ADJUSTABLE PLATE BOLT		1		
192	JM23100060	FLAT WASHER 8		1		
193	JM23100094	WAVE WASHER 8		1		

194	JM23100092	CUTTING DEPTH ADJUSTABLE PLATE		1		
195	JM23500041	H.S.BOLT M6X40		4		
196	JM23100151	SPRING WASHER 6		4		
197	JM23100190	SPECIAL WASHER 6		4		
198	JM23100014	CROSS HEAD SCREW M4X15		2	*	
198-1	JM23100033	PAN HEAD SCREW M4X12	<	2	*	
199	JM23100015	SPRING WASHER 4		2	*	
200	JM23100016	FLAT WASHER 4		2	*	
201	JM23100141	HEX LOCK NUT 5		1	*	
202	JM23100007	FLAT WASHER 5		1	*	
203	JM23100139	LEVER SCREW		1	*	
204	JM23500045	LEVER SPRING		1	*	
205	JM23500044	LOCK LEVER BRACKET		1	*	
206	JM23500043	LOCK LEVER		1	*	
207	JM23500103	OUTPUT SHAFT		1		
208	JM23100156	KEY 5X10		1		
209	JM23100157	BEARING 6304		1		
210	JM23100158	RETAINING RING 20		1		
211	JM23500104	GEAR WHEEL		1		
212	JM23100160	RETAINING RING 16		1		
213	JM23100161	OUTPUT SHAFT SCREW M8X12		1		
214	JM23510011	GEAR BOX COMPLETE		1		
C10	JM23500105	GEAR BOX		1	*	
C20	JM23100162	BUSH		1	*	
215	JM23100165	CORD GUARD S		1	*	
215-1	JM00000268	PROTECTION TUBE	>	1		
216	JM23000156	POWER SUPPLY CORD ASSY EURO		1		
217	JM23100166	CORD CLAMP		1		
218	JM23100193	PIN C		2	*	
218-1	JM23500040	CROSS HEAD SCREW ST4.2X12	X	2		
219	JM23500108	PROTECTIVE SLEEVE		1		
220	JM23500133	MAGNETIC RING ASSY		1		
221	JM23500109	TRANSFORMER		1		
222	JM23100177	LOCK OFF BUTTON		1		
223	JM23100175	SWITCH LOCK PLATE		1		
224	JM23100171	TERMINAL BLOCK 2P		1		
225	JM23100173	SWITCH LOCK BRACKET		1		
226	JM23100169	CAPACITOR		1		
227	JM23100179	ELECTRIC SWITCH		1		
228	JM23100176	SWITCH HANDLE SPRING		1		
229	JM23100174	SWITCH HANDLE		1		
230	JM23500110	BAFFLER RING		1		
231	JM23500137	BALL BEARING 6201		1		
232	JM23500001	ARMATURE ASSY (230V)		1		
D10		INC. 231,233				
233	JM23500111	BALL BEARING 608		1		
234	JM23500112	DAMPING RING		1		
235	JM23500113	S.T. CROSS HEAD 4.2X65		2		
236	JM23500004	FIELD 230V		1		
237	JM23510012	MOTOR HOUSING COMPLETE		1		

C10	JM23500114	MOTOR HOUSING		1	*		
C20	JM23500115	BRUSH HOLDER		2	*		
C30	JM23100185	H.S.SCREW M5X8		2	*		
C40	JM23180057	CAUTION LABEL		1	*		
C50	JM23180056	CAUTION LABEL		1	*		
238	JM23500116	BRUSH COVER		2			
239	JM23500117	CARBON BRUSH 2PCS/SET		2	*		
239-1	JM23500117	CARBON BRUSH 2PCS/SET	<	1			
240	JM23100190	SPECIAL WASHER 6		4			
241	JM23500118	CROSS HEAD SCREW M6X60		4			
242	JM23100186	SOFT STARTER		1			
243	JM23500119	MOTOR REAR COVER		1			
244	JM23100167	SELF TAPPING SCREW M4X16		2			
245	JM23500121	RIGHT HANDLE		1			
246	JM23100007	FLAT WASHER 5		3			
247	JM23500123	CROSS HEAD SCREW M5X40		3			
248	JM23100167	SELF TAPPING SCREW M4X16		3			
249	JM23500124	SWITCH BRACKET		1			
250	JM23500125	LASER SWITCH		1			
251	JM23500126	LASER SWITCH PROTECTIVE COVER		1			
252	JM23500120	ST CROSS HEAD SCREW 4.2X28		2			
253	JM23500107	LEFT HANDLE		1			
254	JM23580018	NAMEPLATE		1	*		
255	JM00000038	EXTENSION TABLE ASSEMBLY		2			
D10		INC. 277, 278					
256	JM2708B060	CAUTION LABEL		2			
257	JM23100034	HEX BOLT M6X28		1			
258	JM23100035	ANTI-LOOSEN RING		1			
259	JM23100034	HEX BOLT M6X28		1			
260	JM23100035	ANTI-LOOSEN RING		1			
261	JM23100087	HEX SOCKET SET SCREW M6X8		2			
262	JM23100081	BUFFER A		2			
263	JM23500089	LINEAR BEARING		3			
264	JM23500092	BEARING GASKET		2			
265	JM23500090	SUPPORT ARM		1			
266	JM23500091	ANGLE LIMIT		1			
267	JM23100019	CROSS HEAD SCREW M4X18		1			
268	JM23100016	FLAT WASHER 4		1			
269	JM23500038	BLADE FLANGE		1			
271	JM23500046	UP BLADE GUARD		1			
272	JM23100114	LINK PIN		1			
273	JM23100147	BUFFER		1			
274	JM23100019	CROSS HEAD SCREW M4X18		1			
275	JM23100016	FLAT WASHER 4		1			
276	JM23100016	FLAT WASHER 4		2			
277	JM00000259	WING BOLT M6X14		2			
278	JM00000260	LEVELING FOOT BOLT M8X54		2			
A01	JM23000127	HOLDER		2	*		
A02	JM23570002	SAW BLADE		1			
A03	JM23510009	VISE ASSEMBLY		1			
C10	JM23500098	GUIDE ROD		1			

C20	JM23100152	WING KNOB,M6X10		1		
C30	JM23500099	CLAMP KNOB		1		
C40	JM27000218	WISE ARM		1		
C50	JM27000219	WISE PLATE		1		
C60	JM23100065	PAN HEAD SCREW M4X8		1		
C70	JM23100016	FLAT WASHER 4		1		
C80	JM23100015	SPRING WASHER 4		1		
A04	JM23510010	DUST BAG ASSY		1		
C10	JM23500100	DUST BAG BEAM		1		
C20	JM23500101	DUST BAG CLAMP		1		
C30	JM23500102	DUST BAG		1		
A05	JM27000328	TRIANGLE PLATE		1		
A06	782230-2	BOX WRENCH 13-3		1		
A07	JM23100144	RING 30		1		
F01	198688-9	STAND SET		1		
F02-1	198687-1	STAND SET	<	1		

Please state Parts No. when your order.

Print Date 10/23/2023