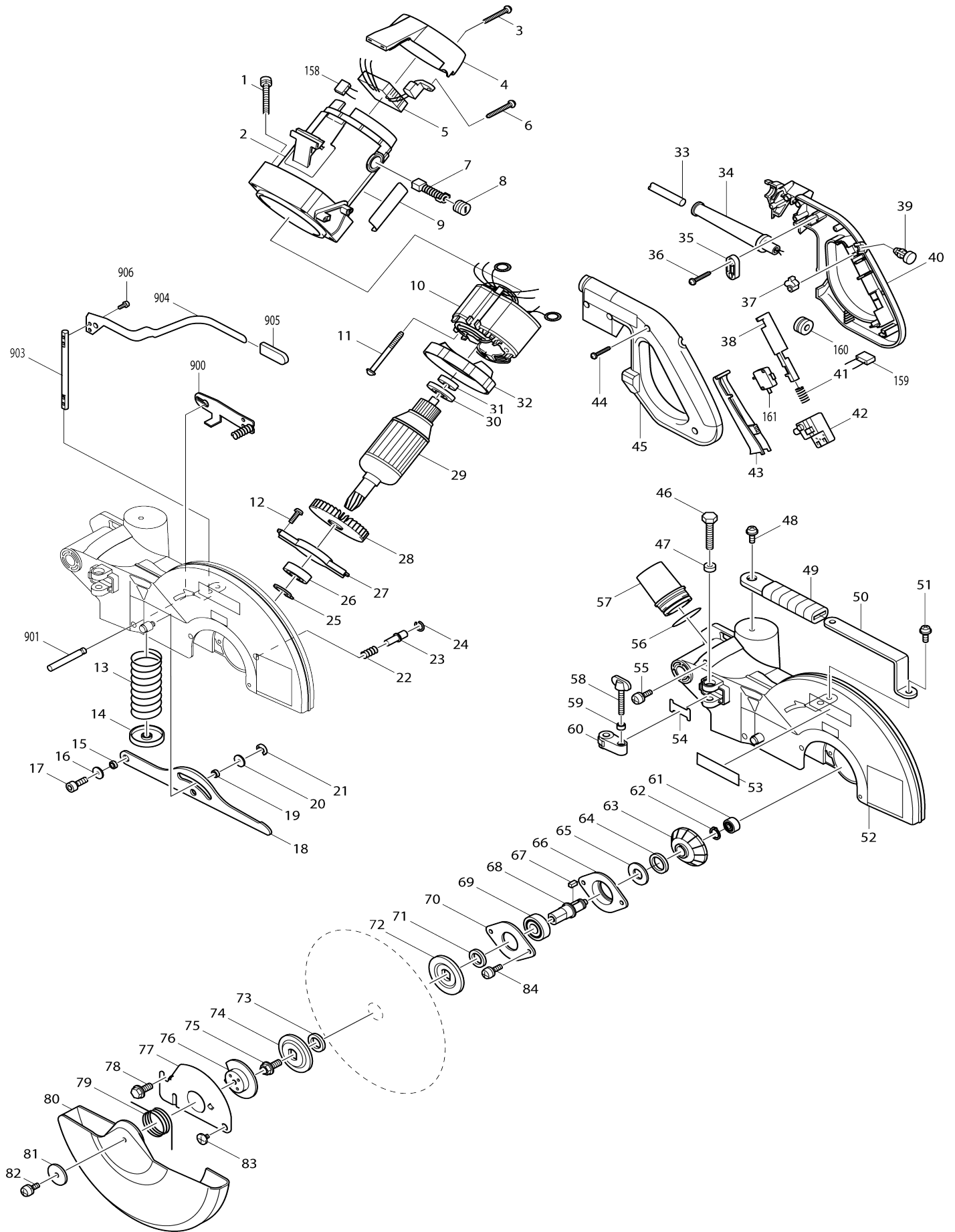
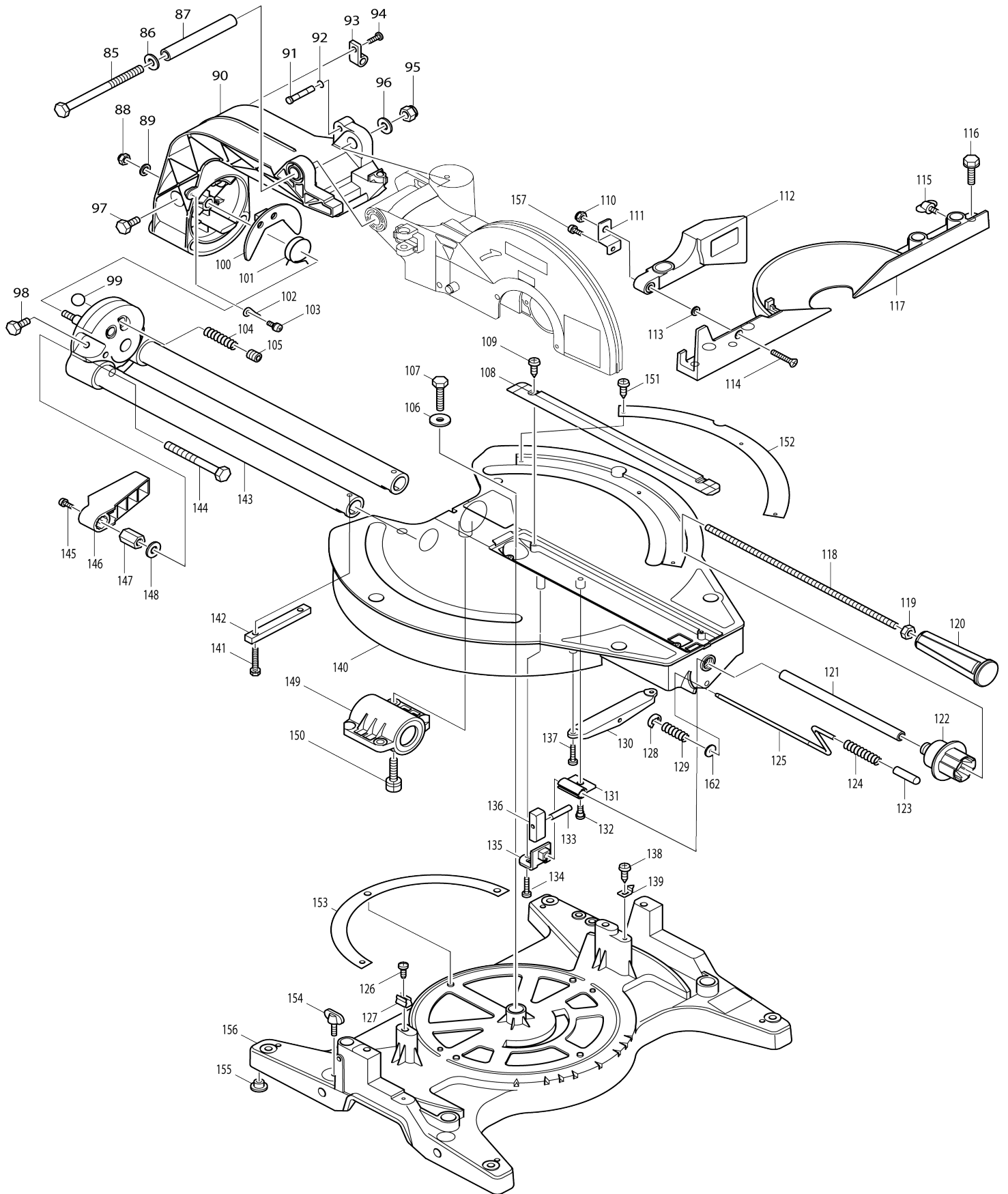


Model No.LS1013 SLIDE COMPOUND SAW 255MM



Model No. LS1013 SLIDE COMPOUND SAW 255MM



Model No.LS1013 SLIDE COMPOUND SAW 255MM

Item No.	Parts No.	Description	Interchangability	Q'ty	New/Old	Note1	Note2
001	911373-5	PAN HEAD SCREW M6X50		4			
002A_	159963-8	MOTOR HOUSING COMPLETE		1	*		
C10	643660-1	BRUSH HOLDER 6.5-13.5		2	*		
C20	817881-3	CAUTION LABEL		1	*		
002A1	154568-9	MOTOR HOUSING COMPLETE	<	1			
C10	643660-1	BRUSH HOLDER 6.5-13.5		2			
C20	817320-3	CAUTION LABEL		1			
003	265995-6	TAPPING SCREW 4X18		2			
004	416075-3	REAR COVER		1			
005	631219-6	CONTROLLER		1			
006	265995-6	TAPPING SCREW 4X18		1			
007	181044-0	CARBON BRUSH CB-153		1	*		
007-1	194985-1	CARBON BRUSH SET CB-153	O	1			
008	643650-4	BRUSH HOLDER CAP 6.5-13.5		2	*		
008-1	643650-4	BRUSH HOLDER CAP 6.5-13.5	O	2			
009	858580-8	NAME PLATE LS1013		1			
010F_	599506-8	FIELD ASS'Y 220V		1			
C10	654020-2	RING TERMINAL		2			
C20	654502-4	CONNECTOR P-2		2			
011	266029-8	TAPPING SCREW 5X65		2			
012	911223-4	PAN HEAD SCREW M5X16		2			
013	233165-5	COMPRESSION SPRING 28		1			
014	344464-1	SPRING HOLDER		1			
015	257163-5	RING 6		1			
016	253804-1	FLAT WASHER 6		1			
017	922331-6	HEX. SOCKET HEAD BOLT M6X20		1			
018	344415-4	LINK PLATE		1			
019	257163-5	RING 6		1			
020	253804-1	FLAT WASHER 6		1			
021	961018-5	STOP RING E-5		1			
022	231240-1	COMPRESSION SPRING 7		1			
023	256633-1	PIN 6		1			
024	231928-3	RING SPRING 8		1			
025	961057-5	RETAINING RING S-17		1			
026	211275-8	BALL BEARING 6003DDW		1			
027	285686-3	BEARING RETAINER 94		1			
028	240001-8	FAN 80		1			
029C_	516723-5	ARMATURE ASS'Y 220V		1			
D10		INC. 28,30,31					
030	681642-5	INSULATION WASHER		1			
031	211061-7	BALL BEARING 6000LLB		1			
032	416107-6	BAFFLE PLATE		1			
033E_	665865-3	POWER SUPPLY CORD 1.0-2-2.5		1			
034A_	682540-6	CORD GUARD 9.3-90		1			
035B_	687063-9	CORD CLAMP		1	*		
035B1	687052-4	STRAIN RELIEF	X	1			
036	265995-6	TAPPING SCREW 4X18		2			

037	414546-4	CAM		1		
038	416000-4	LOCK OFF LEVER		1		
039	411478-6	SWITCH BUTTON		1		
040A_	182911-2	HANDLE SET		1	*	
C10	810642-0	CAUTION LABEL		1	*	
D10		INC. 45				
040A1	183840-2	HANDLE SET	<	1		
C10	810966-4	CAUTION LABEL		1		
D10		INC. 45				
041	231457-6	COMPRESSION SPRING 3		1		
042	651923-1	SWITCH TG70B		1		
043	415999-0	SWITCH LEVER		1		
044	265995-6	TAPPING SCREW 4X18		6	*	
044-1	265995-6	TAPPING SCREW 4X18	S	4		
045A_	182911-2	HANDLE SET		1	*	
C10	810642-0	CAUTION LABEL		1	*	
D10		INC. 40				
045A1	183840-2	HANDLE SET	<	1		
C10	810966-4	CAUTION LABEL		1		
D10		INC. 40				
046	921467-8	HEX. BOLT M8X45		1		
047	262003-4	RUBBER RING 6		1		
048	911323-0	PAN HEAD SCREW M6X16		1		
049	421562-9	GRIP		1		
050	344420-1	GRIP HOLDER		1		
051	911323-0	PAN HEAD SCREW M6X16		1		
052A_	151470-7	BLADE CASE COMPLETE		1	*	
C10	263005-3	RUBBER PIN 6		1	*	
C20	817667-5	CAUTION LABEL		1	*	
C30	817874-0	CAUTION LABEL		1	*	
052A1	151470-7	BLADE CASE COMPLETE	<	1	*	
C10	263005-3	RUBBER PIN 6		1	*	
C20	817667-5	CAUTION LABEL		1	*	
C30	817874-0	CAUTION LABEL		1	*	
052A2	154566-3	BLADE CASE COMPLETE	<	1	*	
C10	263005-3	RUBBER PIN 6		1	*	
C20	817667-5	CAUTION LABEL		1	*	
C30	810968-0	CAUTION LABEL		1	*	
052A3	154827-1	BLADE CASE COMPLETE	S	1	*	
C10	263005-3	RUBBER PIN 6		1	*	
C20	817667-5	CAUTION LABEL		1	*	
C30	810968-0	CAUTION LABEL		1	*	
052A4	188386-3	BLADE CASE SET	<	1		
C10	263005-3	RUBBER PIN 6		1		
C20	816847-0	OPERATIONAL INDICATION LABEL		1		
C30	810968-0	CAUTION LABEL		1		
D10		INC. 53				
053	819064-1	MAKITA MARK		1	*	
053-1	819214-8	MAKITA LOGO LABEL	X	1		
054	344045-1	STOPPER ARM PLATE		1		
055	911113-1	PAN HEAD SCREW M4X10 WITH		1		

		WR				
056	213460-9	O RING 35		1		
057	416133-5	DUST NOZZLE		1	*	
057-1	419277-0	DUST NOZZLE	O	1		
058	265717-4	SCREW M6X43		1		
059	262001-8	URETHANE RING 5		1		
060	316471-4	STOPPER ARM		1	*	
060-1	317176-9	STOPPER ARM	O	1		
061	211021-9	BALL BEARING 607LLB		1		
062	961054-1	RETAINING RING S-14		1		
063	226742-0	SPIRAL BEVEL GEAR 33		1		
064	262074-1	RUBBER RING 20		1		
065	267035-6	FLAT WASHER 14		1		
066	316836-0	BEARING BOX (A)		1		
067	254202-2	KEY 4		1		
068	322899-6	SPINDLE		1		
069	211275-8	BALL BEARING 6003DDW		1		
070	285828-9	BEARING RETAINER 66		1		
071	257022-3	RING 16		1		
072	224333-1	FLANGE 53		1		
073A_	257137-6	RING 16		1	*	
073A1	257262-3	RING 16	O	1		
074	224333-1	FLANGE 53		1		
075	265355-2	HEX. FLANGE HEAD BOLT M8X20		1		
076	343639-9	CENTER PLATE		1		
077	344380-7	CENTER COVER		1	*	
077-1	345226-0	CENTER COVER	<	1		
078	265324-3	HEX. FLANGE HEAD BOLT M8X12		1		
079	231593-8	TORSION SPRING 36		1		
080	416105-0	SAFETY COVER		1	*	
080-1	450047-8	SAFETY COVER	<	1		
081	267136-0	FLAT WASHER 5		1		
082	911213-7	PAN HEAD SCREW M5X12		1		
083	265008-3	+ FLAT HEAD SCREW M5		1		
084	911223-4	PAN HEAD SCREW M5X16		2		
085	265406-1	HEX. BOLT M10X130		1	*	
086	253024-7	FLAT WASHER 10		1	*	
087	331428-4	PIN 16-113		1	*	
087-1	331428-4	PIN 16-113	O	1		
088	252105-4	HEX. LOCK NUT M8-13		1		
089	941201-0	FLAT WASHER 8		1		
090	316839-4	ARM		1	*	
090-1	317983-0	ARM	<	1		
091	322317-4	STOPPER PIN		1	*	
091-1	324183-5	STOPPER PIN	S	1		
092	213021-5	O RING 5		1		
093	687042-7	STRAIN RELIEF		1		
094	266026-4	TAPPING SCREW BIND CT 4X12		1		
095	252130-5	HEX. LOCK NUT M10-17		1	*	
096	253024-7	FLAT WASHER 10		1	*	
097-1	265455-8	HEX. BOLT M8X28		2		
098	265412-6	HEX. BOLT M8X20		2		

099	216003-6	STEEL BALL 10		2		
100	344414-6	GUIDE PLATE		1	*	
100-1	345418-1	GUIDE PLATE	<	1		
101	231626-9	TORSION SPRING 28		1		
102	413067-3	INDICATION PLATE		2		
103	911114-9	PAN HEAD SCREW M4X10		2		
104	233168-9	COMPRESSION SPRING 5		2		
105	266131-7	H.S.SET SCREW(FLATPOINT)M12X 12		2		
106	253852-0	FLAT WASHER 8		1		
107	265442-7	HEX. BOLT M8X40		1		
108	415209-5	KERF BOARD		2		
109	266026-4	TAPPING SCREW BIND CT 4X12		4		
110	252014-7	HEX. LOCK NUT M6-10		1		
111	344463-3	SUB FENCE PLATE		1		
112A_	150711-8	SUB FENCE COMPLETE		1	*	
C10	810858-7	CAUTION LABEL		1	*	
112A1	154564-7	SUB FENCE COMPLETE	<	1		
C10	810967-2	CAUTION LABEL		1		
113	253715-0	FLAT WASHER 6		1		
114	912357-6	COUNTERSUNK HEAD SCREW M6 X35		1		
115	251887-5	SCREW M6X10		1		
116	921451-3	HEX. BOLT M8X30		4	*	
116-1	265488-3	HEX. BOLT M8X30	O	4		
117	316840-9	GUIDE RULE		1	*	
117-1	316840-9	GUIDE RULE	O	1		
118	266132-5	SCREW M8X320		1		
119	931402-8	HEX. NUT M8		1		
120	273444-9	GRIP 37		1	*	
120-1	271314-6	GRIP 40	O	1		
121	331491-7	PIN 9-200		1	*	
121-1	331491-7	PIN 9-200	O	1		
122	152541-3	KNOB 48 COMPLETE		1		
123	421563-7	CAP 10		1		
124	322924-3	COIL SPRING		1		
125	322909-9	LOCK PIN		1		
126	266034-5	TAPPING SCREW CT 4X16		1		
127	232075-3	LEAF SPRING		1		
128	961018-5	STOP RING E-5		1		
129	231307-5	COMPRESSION SPRING 6		1		
130	316899-6	PIN HOLDER		1		
131	344411-2	SLIDE STOPPER		1		
132	251267-5	+ PAN HEAD SCREW M6		1		
133	256196-7	PIN 5		1		
134	266034-5	TAPPING SCREW CT 4X16		1		
135	344412-0	STOPPER HOLDER		1		
136	331493-3	TURN STOPPER		1		
137	266034-5	TAPPING SCREW CT 4X16		2		
138	266026-4	TAPPING SCREW BIND CT 4X12		1		
139	816128-2	POINTER		1		
140	151468-4	TURN BASE COMPLETE		1	*	

C10	211444-1	LINEAR BALL BEARING 3064		1	*		
C20	219002-7	BEARING 30		1	*		
C30	262048-2	FELT RING 30		2	*		
C40	263005-3	RUBBER PIN 6		1	*		
C50	343676-3	CAP		1	*		
C60	817283-3	CAUTION LABEL		2	*		
140-1	151468-4	TURN BASE COMPLETE	O	1	*		
C10	211444-1	LINEAR BALL BEARING 3064		1	*		
C20	211439-4	LINEAR BALL BEARING 3050		1	*		
C30	262048-2	FELT RING 30		1	*		
C40	263005-3	RUBBER PIN 6		1	*		
C50	343676-3	CAP		1	*		
C60	817283-3	CAUTION LABEL		2	*		
C70	262076-7	FELT RING 30		1	*		
140-2	153832-5	TURN BASE COMPLETE	O	1			
C10	211444-1	LINEAR BALL BEARING 3064		1			
C20	219002-7	BEARING 30		1			
C30	262048-2	FELT RING 30		2			
C40	263005-3	RUBBER PIN 6		1			
C50	343676-3	CAP		1			
C60	817283-3	CAUTION LABEL		2			
141	921356-7	HEX. BOLT M6X35		2			
142	152542-1	SQUARE ROD COMPLETE		1			
C10	263005-3	RUBBER PIN 6		1			
143	151459-5	ARM HOLDER COMPLETE		1			
C10	816313-7	BEVEL SCALE LABEL		1	*		
C11	816771-7	BEVEL SCALE LABEL	<	1			
144	251668-7	HEX. BOLT M10X90		1			
145	911113-1	PAN HEAD SCREW M4X10 WITH WR		1			
146	416006-2	LEVER 100		1			
147	252144-4	HEX. NUT M10-17		1			
148	253024-7	FLAT WASHER 10		1			
149	152540-5	BEARING BOX B COMPLETE		1			
C10	211444-1	LINEAR BALL BEARING 3064		1			
C20	262048-2	FELT RING 30		2			
C30	343676-3	CAP		2			
C40	316837-8	BEARING BOX (B)		1			
150	922451-6	HEX. SOCKET HEAD BOLT M8X30		2			
151	266026-4	TAPPING SCREW BIND CT 4X12		2			
152	816326-8	MITER SCALE PLATE		1			
153	344477-2	SLIDE PLATE		2			
154	251887-5	SCREW M6X10		2			
155	286212-1	CAP 20		4			
156A_	150714-2	BASE COMPLETE		1	*		
C10	817838-4	CAUTION LABEL		1	*		
156A1	151898-9	BASE COMPLETE		1	*		
C10	817838-4	CAUTION LABEL		1	*		
156A2	153837-5	BASE COMPLETE	O	1	*		
C10	817838-4	CAUTION LABEL		1	*		
156A3	153889-6	BASE COMPLETE	<	1			
C10	810965-6	CAUTION LABEL		1			

157	911108-4	PAN HEAD SCREW M4X8		1			
158	645006-7	NOISE SUPPRESSOR		1	*		
158-1	645185-1	NOISE SUPPRESSOR	O	1			
159	645105-5	NOISE SUPPRESSOR		1	*		
159-1	645185-1	NOISE SUPPRESSOR	O	1			
160	688106-0	LINE FILTER		1	*		
160-1	688131-1	LINE FILTER	O	1	*		
160-2	688131-1	LINE FILTER	O	1			
161	651941-9	SWITCH V-15-2A5		1			
162	253804-1	FLAT WASHER 6		1			
163	941201-0	FLAT WASHER 8		1			
164	231266-3	COMPRESSION SPRING 5		1			
165	271601-3	KNOB 20		1			
166	251961-9	H.S.SET SCREW(FLAT POINT)M6X10		1			
900	344468-3	LOCK PLATE		1	*		
900-1	344855-6	LOCK PLATE	S	1	*		
900-2	345616-7	LOCK PLATE	S	1			
901	322985-3	LOCK PIN 8		1	*		
901-1	324654-2	LOCK PIN 8	S	1			
903	322984-5	ROD 8		1	*		
903-1	324640-3	ROD 8	S	1			
904	344469-1	LEVER		1	*		
904-1	345606-0	LOCK LEVER	S	1	*		
904-2	345829-0	LOCK LEVER	S	1			
905	421589-9	CAP		1			
906	911113-1	PAN HEAD SCREW M4X10 WITH WR		4	*		
906-1	922107-1	HEX. SOCKET HEAD BOLT M4X8	<	2			
907	911113-1	PAN HEAD SCREW M4X10 WITH WR		2			
A01	762001-3	TRIANGULAR RULE		1			
A02	782212-4	SOCKET WRENCH 13		1			
A03	122523-9	DUST BAG ASS'Y		1	*		
C10	410602-8	FASTENER		1	*		
A03-1	122852-0	DUST BAG ASS'Y	O	1			
C10	410602-8	FASTENER		1			
A04	411478-6	SWITCH BUTTON		2			
A05	322932-4	HOLDER 255		2			
A06	251887-5	SCREW M6X10		1			
A07	322983-7	WISE ROD		1			
A08	271309-9	KNOB 40		1			
A09	122538-6	WISE ASS'Y		1			
C10	316898-8	WISE ARM		1			
D10		INC. A06-A08,A10-A12					
A10	253804-1	FLAT WASHER 6		1			
A11	343651-9	WISE PLATE		1			
A12	251370-2	+ PAN HEAD SCREW M5		1			
A13	151917-1	KERF BLOCK COMPLETE		1			
C10	810993-1	CAUTION LABEL		1			
A14	251314-2	+ SCREW M4X12		2			
E01	646049-2	CHOKO COIL		1			

E02	646080-8	CHOKE COIL		1		
E05	163388-0	SPIRAL SPRING		1	*	
E06	231401-3	COMPRESSION SPRING 7		1	*	
E06-1	231633-2	TORSION SPRING 8	S	1		
E07	265056-2	+ PAN HEAD SCREW M5		1	*	
E16	253804-1	FLAT WASHER 6		1	*	
E22	A-85014	T.C.T.SAW BLADE 260X60TX30		1	*	
E22-1	B-04597	TCT SAW BLADE 260X30X70T	O	1		
E24	192648-3	SUB FENCE (R) SET		1	*	
C10	810877-3	CAUTION LABEL		1	*	
C20	251887-5	SCREW M6X10		2	*	
E24-1	194002-7	SUB FENCE (R) SET	O	1	*	
C10	810877-3	CAUTION LABEL		1	*	
C20	251887-5	SCREW M6X10		2	*	
E24-2	153896-9	SUB FENCE R COMPLETE	<	1		
C10	817319-8	CAUTION LABEL		1		
E25	344854-8	ADJUSTER PLATE		1	*	
E26	912107-9	COUNTERSUNK HEAD SCREW M4 X8		1	*	
E27	421863-5	CAP		1		
E28	345494-5	STOPPER		1		
E29	266050-7	TAPPING SCREW 4X30		2		
E30	419075-2	ROD HOLDER		1		
E31	961012-7	STOP RING E-6		2		
E32	345610-9	GUARD PLATE		1		
E33	421916-0	GUARD		1		
E34	911114-9	PAN HEAD SCREW M4X10		1		
E37	251887-5	SCREW M6X10		2		
F02	192628-9	CROWN MOLDING STOPPER (L.R)		1		
F06-1	198688-9	STAND SET	<	1		

Please state Parts No. when your order.

Print Date 12/04/2023