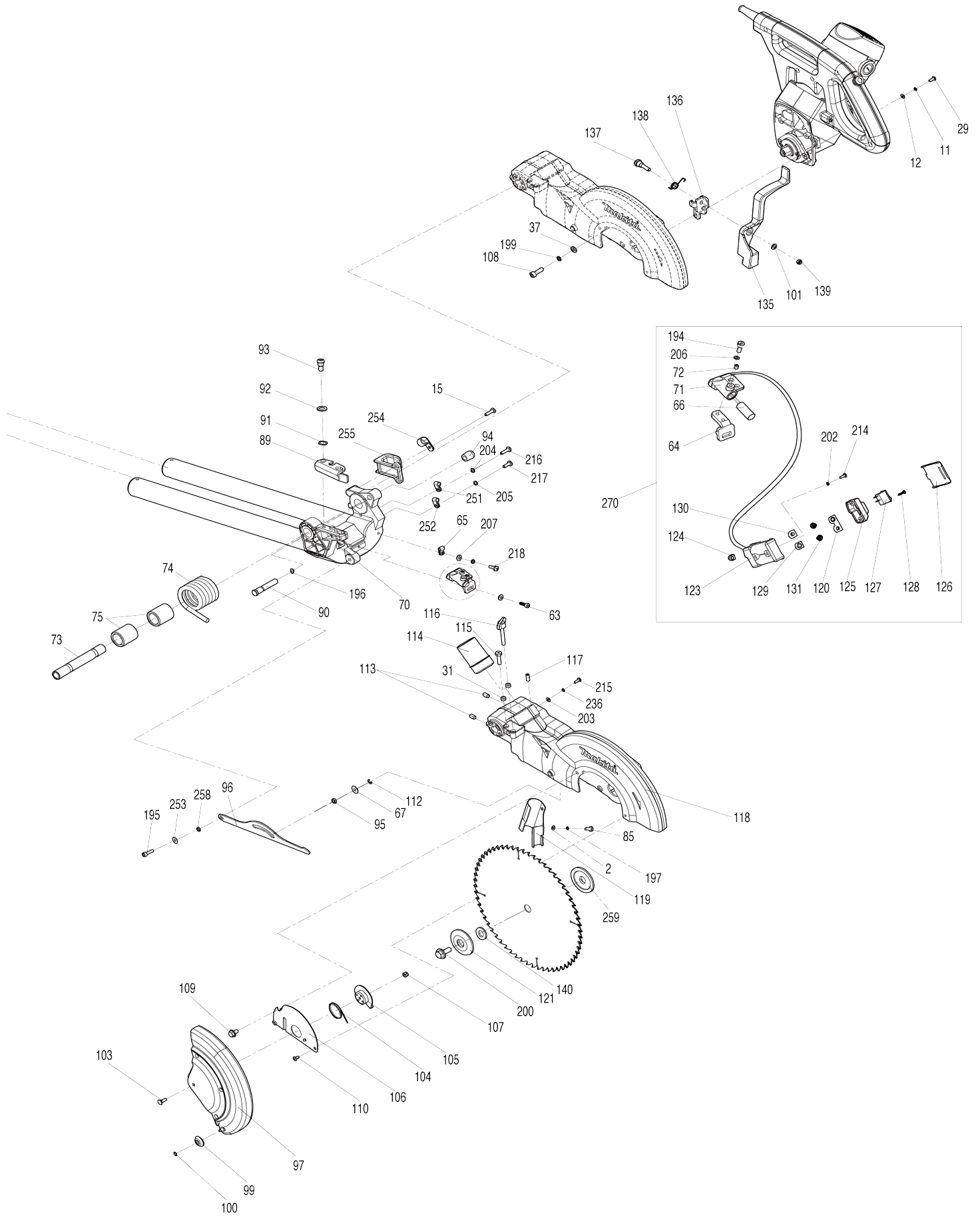
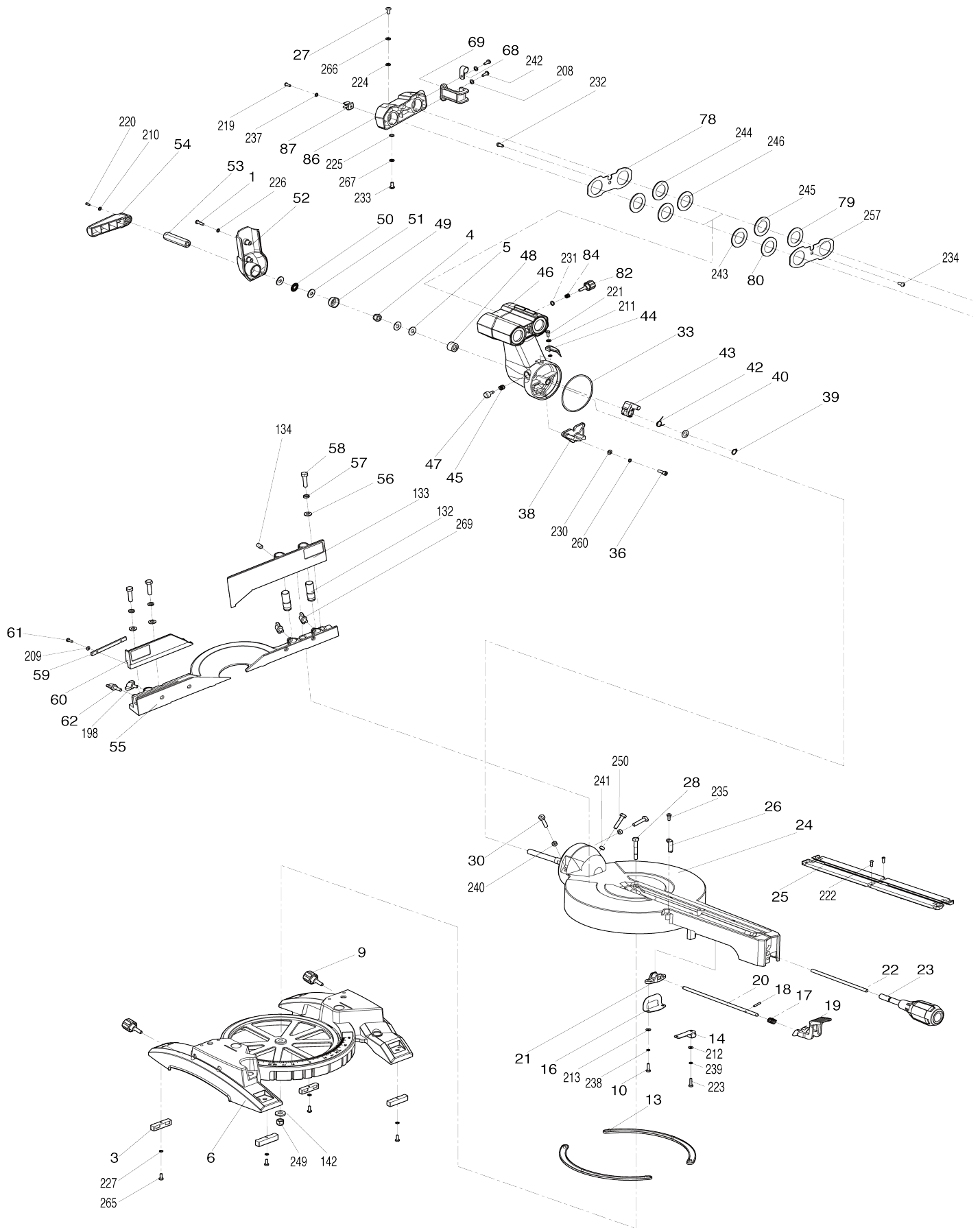


# Model No.LS1018L 260MM SLIDE COMPOUND MITER SAW



# Model No.LS1018L 260MM SLIDE COMPOUND MITER SAW



# Model No. LS1018L 260MM SLIDE COMPOUND MITER SAW



Model No.LS1018L 260MM SLIDE COMPOUND MITER SAW

Item No.	Parts No.	Description	Interchangeability	Q'ty	New/Old	Note1	Note2
001	JM23100006	CROSS HEAD SCREW M5X20		2			
002	JM23100007	FLAT WASHER 5		2			
003	JM23100008	PAD		4			
004	JM23100009	HEX LOCK NUT M10		1			
005	JM23100010	FLAT WASHER 10		2			
006	JM23100300	BASE COMPLETE		1			
C10	JM2708A060	CAUTION LABEL		2			
C20	JM23100012	MITER SCALE LABEL		1	*		
D10		INC. 7					
D11		INC. 289					
D12		INC. 007, 289					
007	JM23100012	MITER SCALE LABEL		1	*		
007-1	JM23100012	MITER SCALE LABEL		1			
009	JM23100013	KNOB FOR EXT.WING		2	*		
009-1	JM00000074	PAN HEAD SCREW M6X20	X	2			
010	JM23100014	CROSS HEAD SCREW M4X15		2			
011	JM23100015	SPRING WASHER 4		2	*		
012	JM23100016	FLAT WASHER 4		2	*		
013	JM23100017	FRICTION PLATE		2			
014	JM23100018	LOCK PLATE A		1			
015	JM23100019	CROSS HEAD SCREW M4X18		2	*		
015-1	JM23100019	CROSS HEAD SCREW M4X18	O	1			
016	JM23100020	LOCK PLATE B		1			
017	JM23100021	LOCK SPRING		1			
018	JM23100022	LOCK PIN		1			
019	JM23100023	PRESS PLATE		1			
020	JM23100024	LOCK SHAFT B		1			
021	JM23100025	WORKING TABLE LOCKING BRACKET		1			
022	JM23100026	LOCK SHAFT A		1			
023	JM23100027	MITER LOCKING HANDLE		1			
024	JM23200100	WORKING TABLE COMPLETE		1			
C10	JM23200004	BEVEL SCALE		1	*		
C20	JM23100038	ELASTIC PIN 4X20		1	*		
C30	JM23100039	LOCKING ROD		1	*		
C40	JM23100009	HEX LOCK NUT M10		1	*		
D10		INC. 32,34,35					
D11		INC. 292-295					
D12		INC. 292-295, 308					
025	JM23100029	TABLE INSERT		2	*		
025-1	JM00000430	KERF BOARD	O	2			
026	JM23100030	MITER POINTER		1			
027	JM23100031	CROSS HEAD SCREW M5X15		2			
028	JM23100032	PIVOT SHAFT		1			
029	JM23100033	PAN HEAD SCREW M4X12		2	*		
030	JM23100034	HEX BOLT M6X28		1			
031	JM23100035	ANTI-LOOSEN RING		2	*		
031-1	JM23100035	ANTI-LOOSEN RING	O	1			

032	JM23200004	BEVEL SCALE		1	*		
033	JM23100037	FRICITION RING		1			
034	JM23100038	ELASTIC PIN 4X20		1	*		
035	JM23100039	LOCKING ROD		1	*		
036	JM23100040	H.S.BOLT M6X20		3			
037	JM23100041	FLAT WASHER 6		4			
038	JM23200005	45DEGREE LIMIT BRACKET		1			
039	JM23100043	RETAINING RING 10		1	*		
039-1	JM27100102	RETAINING RING S-12	X	1			
040	JM23100044	FLAT WASHER 12X20X1		1			
041	JM23100045	ANGLE LIMIT SHAFT		1	*		
041-1	JM23100045	ANGLE LIMIT SHAFT		1			
042	JM23100046	90DEGREE BLOCK SPRING		1			
043	JM23100047	90DEGREE BLOCK		1			
044	JM23100048	BEVEL POINTER		1			
045	JM23100049	MITER PRESSION SPRING		1			
046	JM23100330	SUPPORT ARM COMPLETE		1	*		
C10	JM23100045	ANGLE LIMIT SHAFT		1	*		
C20	JM23100081	BUFFER A		1	*		
C30	JM23100085	LINEAR BEARING		1	*		
C40	JM23100087	HEX SOCKET SET SCREW M6X8		1	*		
D10		INC. 77,79-81,83,243-246,256					
D11		INC. 79-80,243-246					
D12		INC. 79,80,243-246,296-303					
046-1	JM00000415	SUPPORT ARM COMPLETE	O	1			
D12		INC. 79,80,243-246,296-303					
047	JM23100051	LIMITED KNOB		1			
048	JM23100052	CLAMP PLATE		1			
049	JM23100053	BOWL TYPE PLATE		1			
050	JM23100054	SURFACE BEARING		1			
051	JM23100055	BIG FLAT WASHER 10X26X2.5		2			
052	JM23100056	SLIDING BRACKET COVER		1			
053	JM23100057	HEX NUT		1			
054	JM23100058	BEVEL LOCKING HANDLE		1			
055	JM23100059	RIP FENCE		1	*		
055-1	JM23200037	RIP FENCE	O	1	*		
055-2	JM00000076	RIP FENCE	X	1			
056	JM23100060	FLAT WASHER 8		4			
057	JM23100061	SPRING WASHER 8		4			
058	JM23100062	HEX BOLT M8X30		4			
059	JM23100063	KEY		1			
060	JM23100320	SUB FENCE COMPLETE		1	*		
C10	JM23180060	CAUTION LABEL		1	*		
060-1	JM23210006	SUB FENCE COMPLETE	<	1			
C10	JM23180060	CAUTION LABEL		1	*		
D10		INC. 311, 312					
061	JM23100065	PAN HEAD SCREW M4X8		2			
062	JM23100066	WING KNOB M6X20		1			
063	JM23100067	H.S.BOLT M4X12		1	*		
063-1	JM23100146	H.S.BOLT M4X10	X	1			
064	JM23100068	LASER MOVING FIX PLATE		1			

065	JM23100069	LASER CORD CLAMP		1		
066	JM23100070	LASER		1		
067	JM23100071	THIN FLAT WASHER 6		1		
068	JM23100072	CORD CLAMP		1		
069	JM23100073	CORD WRAP BRACKET		1		
070	JM23100340	UP BLADE GUARD BRACKET		1	*	
C10	JM23180059	CAUTION LABEL		1	*	
D10		INC. 76,141				
070-1	JM23100342	UP BLADE GUARD BRACKET CMP LT	O	1	*	
C10	JM23100145	ELASTIC PIN 5X30		2	*	
C20	JM23180059	CAUTION LABEL		1	*	
D10		INC. 76,141				
070-2	JM23100343	UP BLADE GUARD BRACKET CMP LT	O	1	*	
C20	JM23180059	CAUTION LABEL		1	*	
070-3	JM23100342	UP BLADE GUARD BRACKET CMP LT	X	1		
D11		INC. 314				
071	JM23100075	LASER BASE		1		
072	JM23100076	H.S.SCREW M4X10		1	*	
072-1	JM23300038	HEX SOCKET SET SCREW M4X6	X	1		
073	JM23100077	CONNECTION SHAFT		1		
074	JM23100078	TORSION SPRING		1		
075	JM23100079	LOCATION TUBE		2		
076	JM23100080	SLIDING BAR		2	*	
077	JM23100081	BUFFER A		1	*	
078	JM23100082	BEARING BAFFLE		1		
079	JM23100083	LIMITED BRACKET		2	*	
079-1	JM23100083	LIMITED BRACKET	O	1		
080	JM23100084	DUSTPROOF RING		1	*	
080-1	JM23100083	LIMITED BRACKET	X	1		
081	JM23100085	LINEAR BEARING		3	*	
082	JM23100086	SLIDING BAR LOCKING KNOB		1		
083	JM23100087	HEX SOCKET SET SCREW M6X8		2	*	
084	JM23100088	PRESSURE SPRING		1		
085	JM23100089	CROSS HEAD SCREW M5X12		2		
086	JM23100090	SLIDING BAR REAR COVER		1		
087	JM23100091	WRENCH CLIP		1		
089	JM23100092	CUTTING DEPTH ADJUSTABLE PL ATE		1		
090	JM23100093	PIN C		1	*	
090-1	JM23100193	PIN C	O	1		
091	JM23100094	WAVE WASHER 8		1		
092	JM23100095	FLAT WASHER 8X14X1		1		
093	JM23100096	DEPTH ADJUSTABLE PLATE BOLT		1		
094	JM23100097	PIN CAP		1		
095	JM23100098	LINK SLEEVE		1		
096	JM23100099	LINK		1		
097	JM23100350	LOWER BLADE GUARD COMPLET E		1	*	
C10	JM23100101	GUARD RIVET		3	*	
C20	JM23100105	LOWER BLADE GUARD PLATE		1	*	

C30	JM23100104	FLAT WASHER 5		3	*		
D10		INC. 98,101,102					
D11		INC. 101					
097-1	JM23210008	LOWER BLADE GUARD COMPLETE	X	1			
098	JM23100101	GUARD RIVET		3	*		
099	JM23100102	GUARD WHEEL		1			
100	JM23100103	WHEEL LOCK RING		1			
101	JM23100104	FLAT WASHER 5		1	*		
102	JM23100105	LOWER BLADE GUARD PLATE		1	*		
103	JM23100106	SQUARE NECK BOLT M6X12		1			
104	JM23100107	GUARD SPRING		1			
105	JM23100108	BOWL PLATE		1			
106	JM23100109	GUARD FIX PLATE		1			
107	JM23100110	HEX LOCK NUT M6		1			
108	JM23200006	H.S.BOLT M6X22		4			
109	JM23100112	HEX BOLT FOR GUARD		1			
110	JM23100113	CROSSHEAD SCREW FOR GUARD		1			
111	JM23100114	LINK PIN		1	*		
112	JM23100115	RETAINING RING 5		1			
113	JM23100116	LOCK SCREW M6X12		2			
114	JM23100117	DUST PORT		1			
115	JM23100118	HEX BOLT M6X25		1			
116	JM23100119	LIMITED KNOB		1			
117	JM23100120	H.S.SET BOLT M6X16		1			
118	JM23100360	UP BLADE GUARD COMPLETE		1	*		
C10	JM23180058	CAUTION LABEL		1	*		
D10		INC. 143					
118-1	JM23200141	UP BLADE GUARD COMPLETE	O	1	*		
C10	JM23180058	CAUTION LABEL		1	*		
D10		INC. 143					
118-2	JM23200146	UP BLADE GUARD COMPLETE	O	1	*		
C10	JM23180058	CAUTION LABEL		1	*		
C20	JM23100114	LINK PIN		1	*		
C30	JM23100147	BUFFER		1	*		
D10		INC. 143					
118-3	JM23200147	UP BLADE GUARD COMPLETE	>	1			
C10	JM23180058	CAUTION LABEL		1	*		
C20	JM23100114	LINK PIN		1	*		
C30	JM23100147	BUFFER		1	*		
D10		INC. 305,306					
119	JM23100122	DUST GUIDE PLATE		1			
120	JM23100123	COPPER CONNECTION PLATE		1			
121	JM23100124	BLADE FLANGE		1			
123	JM23100125	BATTERY BOX		1			
124	JM23100126	LASER CORD TUBE		1			
125	JM23100127	LASER SWITCH COVER		1			
126	JM23100128	BATTERY BOX COVER		1			
127	JM23100129	LASER SWITCH		1			
128	JM23100130	SELF-TAPPING SCREW 2.9X12		2			
129	JM23100131	ANODE COPPER SHEET		1			
130	JM23100132	CATHODE COPPER SHEET		1			

131	JM23100133	BATTERY BOX SPRING		2		
132	JM23200007	RIGHT SUB FENCE CONNECTION PIN		2		
133	JM23200110	RIGHT SUB FENCE COMPLETE		1	*	
C10	JM23280056	CAUTION LABEL		1	*	
133-1	JM00000077	RIGHT SUB FENCE COMPLETE	X	1		
C10	JM23280056	CAUTION LABEL		1	*	
134	JM23200009	H.S.SCREW WITH DOG POINT M6 X10		2		
135	JM23200010	LOCK LEVER		1	*	
136	JM23200011	LOCK LEVER BRACKET		1	*	
137	JM23100139	LEVER SCREW		1	*	
138	JM23100140	LEVER SPRING		1	*	
139	JM23100141	HEX LOCK NUT 5		1	*	
140	JM23100144	RING 30		1		
141	JM23100145	ELASTIC PIN 5X30		2	*	
142	JM23100154	BIG FLAT WASHER 10		1		
143	JM23100147	BUFFER		1	*	
145	JM23200012	OUTPUT SHAFT RING 15.88		1		
146	JM23200013	COUNTERSUNK HEAD BOLT M4X 10		2		
147	JM23200014	COUNTERSUNK HEAD BOLT M6X 15		2		
148	JM23200015	BEARING PRESS PLATE		1		
149	JM23200016	BEARING COVER		1		
150	JM23200017	OUTPUT SHAFT		1		
151	JM23200018	KEY 4X10		1		
152	JM23200019	BEARING 6003		1	*	
152-1	JM23200031	BEARING 6003	X	1	*	
152-2	JM23200019	BEARING 6003	O	1		
153	JM23200020	GEAR		1		
154	JM23200021	SHAFT WASHER		1		
155	JM23200022	RETAINING RING 14		1		
156	JM23200023	OIL BUSH		1	*	
157	JM23200130	GEAR BOX COMPLETE		1		
C10	JM23200023	OIL BUSH		1	*	
D10		INC. 156				
158	JM23200025	GEAR LOCK SPRING		1		
159	JM23200026	GEAR LOCK PIN		1		
160	JM23200027	RETAINING RING 10.5X1		1		
161	JM23200028	SHAFT FIX COVER		1		
162	JM23200029	CROSS HEAD SCREW M5X18		2		
163	JM23200030	RETAINING RING 16		1		
164	JM23200031	BEARING 6003		1	*	
164-1	JM23200019	BEARING 6003	O	1		
165	JM23100168	BAFFLE RING		1		
166	JM23200001	ROTOR ASSEMBLY		1		
D10		INC. 161,164,167				
167	JM23200032	BEARING 6001		1		
168	JM23100170	SELF-TAPPING SCREW M5X70		2		
169	JM23100001	STATOR ASSEMBLY		1		
170	JM23100172	ABSORBER RING		1		
171	JM23200120	MOTOR HOUSE COMPLETE		1	*	



C10	JM23180056	CAUTION LABEL		1	*		
C20	JM23180057	CAUTION LABEL		1	*		
C30	JM23280021	NAME PLATE		1	*		
C40	JM23100184	CARBON BRUSH HOUSE		2	*		
C50	JM23100185	H.S.SCREW M5X8		2	*		
D10		INC. 190,191					
171-1	JM23200121	MOTOR HOUSE COMPLETE	>	1			
C10	JM23180056	CAUTION LABEL		1	*		
C20	JM23180057	CAUTION LABEL		1	*		
C30	JM23280021	NAME PLATE		1	*		
C40	JM23100184	CARBON BRUSH HOUSE		2	*		
C50	JM23100185	H.S.SCREW M5X8		2	*		
172	JM23100167	SELF TAPPING SCREW M4X16		2	*		
172-1	JM23000106	SELF TAPING SCREWST4.2X12	X	2			
173	JM23100166	CORD CLAMP		1			
174	JM23100165	CORD GUARD S		1			
175	JM23000156	POWER SUPPLY CORD ASSY EURO		1			
176	JM23100169	CAPACITOR		1			
177	JM23200034	RIGHT HANDLE		1			
178	JM23100176	SWITCH HANDLE SPRING		1			
179	JM23100171	TERMINAL BLOCK 2P		1			
180	JM23100174	SWITCH HANDLE		1			
181	JM23100175	SWITCH LOCK PLATE		1			
182	JM23100177	LOCK OFF BUTTON		1			
183	JM23100173	SWITCH LOCK BRACKET		1			
184	JM23100178	BRAKE SYSTEM SWITCH		1			
185	JM23100179	ELECTRIC SWITCH		1			
186	JM23200035	CROSS HEAD SCREW M6X50		4			
187	JM23200036	LEFT HANDLE		1			
188	JM23100182	SCREW CAP		2			
189	JM23100183	CARBON BRUSH		2	*		
189-1	JM23000123	CARBON BRUSH 2PCS/SET	O	2	*		
189-2	JM23000123	CARBON BRUSH 2PCS/SET	O	1			
190	JM23100184	CARBON BRUSH HOUSE		2	*		
191	JM23100185	H.S.SCREW M5X8		2	*		
192	JM23100186	SOFT STARTER		1			
193	JM23100188	MOTOR REAR COVER		1			
194	JM23100146	H.S.BOLT M4X10		2			
195	JM23100148	H.S.BOLT M6X20 WITH GLUE		1			
196	JM23100150	SEALING RING		1			
197	JM23100149	SPRING WASHER 5		2			
198	JM23100152	WING KNOB,M6X10		1			
199	JM23100151	SPRING WASHER 6		4			
200	JM23100153	BLADE BOLT		1			
201	JM23100190	SPECIAL WASHER 6		4			
202	JM23100016	FLAT WASHER 4		2			
203	JM23100016	FLAT WASHER 4		1			
204	JM23100016	FLAT WASHER 4		1			
205	JM23100016	FLAT WASHER 4		1			
206	JM23100016	FLAT WASHER 4		2			
207	JM23100016	FLAT WASHER 4		2	*		

207-1	JM23100016	FLAT WASHER 4	O	1		
208	JM23100016	FLAT WASHER 4		1		
209	JM23100016	FLAT WASHER 4		2		
210	JM23100016	FLAT WASHER 4		1		
211	JM23100016	FLAT WASHER 4		1		
212	JM23100016	FLAT WASHER 4		2		
213	JM23100016	FLAT WASHER 4		2		
214	JM23100033	PAN HEAD SCREW M4X12		2		
215	JM23100033	PAN HEAD SCREW M4X12		1		
216	JM23100033	PAN HEAD SCREW M4X12		1		
217	JM23100033	PAN HEAD SCREW M4X12		1		
218	JM23100033	PAN HEAD SCREW M4X12		1		
219	JM23100033	PAN HEAD SCREW M4X12		1		
220	JM23100033	PAN HEAD SCREW M4X12		1		
221	JM23100033	PAN HEAD SCREW M4X12		1		
222	JM23100033	PAN HEAD SCREW M4X12		6		
223	JM23100033	PAN HEAD SCREW M4X12		2		
224	JM23100007	FLAT WASHER 5		2		
225	JM23100007	FLAT WASHER 5		2		
226	JM23100007	FLAT WASHER 5		2		
227	JM23100007	FLAT WASHER 5		4		
228	JM23100007	FLAT WASHER 5		2		
229	JM23100007	FLAT WASHER 5		2	*	
230	JM23100041	FLAT WASHER 6		3		
231	JM23100041	FLAT WASHER 6		1		
232	JM23100089	CROSS HEAD SCREW M5X12		1		
233	JM23100089	CROSS HEAD SCREW M5X12		2		
234	JM23100089	CROSS HEAD SCREW M5X12		1		
235	JM23100089	CROSS HEAD SCREW M5X12		1		
236	JM23100015	SPRING WASHER 4		1		
237	JM23100015	SPRING WASHER 4		1		
238	JM23100015	SPRING WASHER 4		2		
239	JM23100015	SPRING WASHER 4		2		
240	JM23100035	ANTI-LOOSEN RING		1		
241	JM23100035	ANTI-LOOSEN RING		2	*	
241-1	JM23100035	ANTI-LOOSEN RING	O	1		
242	JM23100019	CROSS HEAD SCREW M4X18		2	*	
242-1	JM23100019	CROSS HEAD SCREW M4X18	O	1		
243	JM23100083	LIMITED BRACKET		1	*	
243-1	JM23100084	DUSTPROOF RING	X	1		
244	JM23100083	LIMITED BRACKET		1		
245	JM23100084	DUSTPROOF RING		2	*	
245-1	JM23100084	DUSTPROOF RING	O	1		
246	JM23100084	DUSTPROOF RING		1		
247	JM23100104	FLAT WASHER 5		3	*	
248	JM23100009	HEX LOCK NUT M10		1	*	
249	JM23100009	HEX LOCK NUT M10		1		
250	JM23100034	HEX BOLT M6X28		2	*	
250-1	JM23100034	HEX BOLT M6X28	O	1		
251	JM23100069	LASER CORD CLAMP		1		
252	JM23100069	LASER CORD CLAMP		1		
253	JM23100071	THIN FLAT WASHER 6		1		

254	JM23100072	CORD CLAMP		1			
255	JM23100073	CORD WRAP BRACKET		1			
256	JM23100081	BUFFER A		1	*		
257	JM23100082	BEARING BAFFLE		1			
258	JM23100098	LINK SLEEVE		1			
259	JM23100124	BLADE FLANGE		1			
260	JM23100151	SPRING WASHER 6		3			
261	JM23100167	SELF TAPPING SCREW M4X16		5	*		
261-1	JM00000217	SELF TAPPING SCREW ST4.2X18	X	6			
262	JM23100167	SELF TAPPING SCREW M4X16		1	*		
262-1	JM00000217	SELF TAPPING SCREW ST4.2X18	X	1			
263	JM23100167	SELF TAPPING SCREW M4X16		2	*		
263-1	JM00000217	SELF TAPPING SCREW ST4.2X18	X	1			
264	JM23100167	SELF TAPPING SCREW M4X16		2	*		
264-1	JM00000217	SELF TAPPING SCREW ST4.2X18	>	2			
265	JM23100006	CROSS HEAD SCREW M5X20		4	*		
265-1	JM23200029	CROSS HEAD SCREW M5X18	X	4			
266	JM23100149	SPRING WASHER 5		2			
267	JM23100149	SPRING WASHER 5		2			
268	JM23100149	SPRING WASHER 5		2			
269	JM23100066	WING KNOB M6X20		2			
270	JM23100390	LASER ASSEMBLY		1			
D10		INC. 64,66,71,72,120,123-131,					
D20		INC. 194,202,206,214					
271	JM00000038	EXTENSION TABLE ASSEMBLY		2			
D10		INC. 290,291					
272	JM23100500	HOLDER		2			
273	JM23100016	FLAT WASHER 4		1			
274	JM23100019	CROSS HEAD SCREW M4X18		1			
275	JM23100016	FLAT WASHER 4		1			
276	JM23100019	CROSS HEAD SCREW M4X18		1			
277	JM23100016	FLAT WASHER 4		1			
278	JM00000217	SELF TAPPING SCREW ST4.2X18		1			
279	JM23100007	FLAT WASHER 5		1			
280	JM23100007	FLAT WASHER 5		1			
281	JM23500053	EXTERNAL TOOTHED LOCK WASHER 4		1			
282	JM23100035	ANTI-LOOSEN RING		1			
283	JM23100034	HEX BOLT M6X28		1			
284	JM23100007	FLAT WASHER 5		1			
285	JM00000216	EXTERNAL TOOTHED LOCK WASHER 5		1			
286	JM23100035	ANTI-LOOSEN RING		1			
287	JM23100041	FLAT WASHER 6		1			
288	JM23100016	FLAT WASHER 4		1			
289	JM2708B060	CAUTION LABEL		2			
290	JM00000259	WING BOLT M6X14		2			
291	JM00000260	LEVELING FOOT BOLT M8X54		4			
292	JM23100039	LOCKING ROD		1			
293	JM23100038	ELASTIC PIN 4X20		1			
294	JM23100009	HEX LOCK NUT M10		1			
295	JM23100028	WORKING TABLE		1			

296	JM23100083	LIMITED BRACKET		1		
297	JM23100084	DUSTPROOF RING		1		
298	JM23100081	BUFFER A		1		
299	JM23100087	HEX SOCKET SET SCREW M6X8		2		
300	JM23100081	BUFFER A		1		
301	JM23100085	LINEAR BEARING		1		
302	JM23100085	LINEAR BEARING		1		
303	JM23100085	LINEAR BEARING		1		
305	JM23100114	LINK PIN		1		
306	JM23100147	BUFFER		1		
308	JM23200004	BEVEL SCALE		1		
311	JM23180060	CAUTION LABEL		1		
312	JM23200039	SUB FENCE		1		
313	JM23280056	CAUTION LABEL		1		
314	JM23180059	CAUTION LABEL		1		
315	JM00000061	CAUTION LABEL		1		
317	JM23280074	NAME PLATE		1		
318	JM23180057	CAUTION LABEL		1		
319	JM23180056	CAUTION LABEL		1		
A01	JM23100500	HOLDER		1	*	
A01-1	JM23100500	HOLDER	<	2		
A02	782230-2	BOX WRENCH 13-3		1	*	
A02-1	JM23100197	BOX WRENCH 13-3	O	1		
A03	JM23100005	SAW BLADE		1	*	
A03-1	JM00000382	SAW BLADE	O	1		
A04	JM27000328	TRIANGLE PLATE		1		
A05	JM23100501	DUST BAG ASSEMBLY		1		
A06	JM23100502	WISE ASSEMBLY		1		

Please state Parts No. when your order.

Print Date 10/23/2023