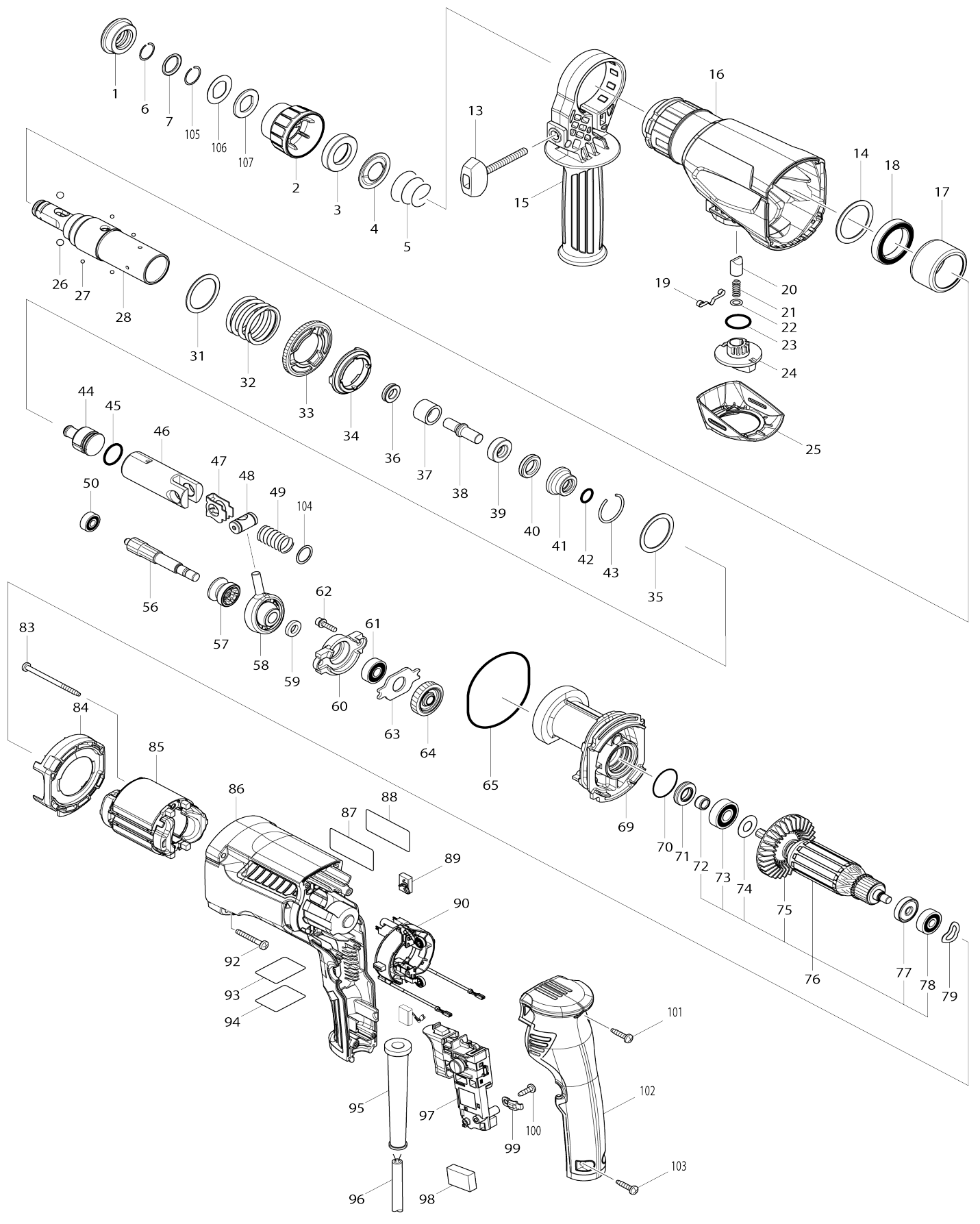


# Model No.M8700 20MM ROTARY HAMMER



**Model No.M8700 20MM ROTARY HAMMER**

Item No.	Parts No.	Description	Interchangability	Q'ty	New/Old	Note1	Note2
F01	199140-0	GUIDE RAIL 1000 SET		1			
F02	199141-8	GUIDE RAIL 1500 SET		1			
F03	194368-5	GUIDE RAIL 1400 SET		1			
F04	194925-9	GUIDE RAIL 1900 SET		1			
F05	194367-7	GUIDE RAIL 3000 SET		1			
F06	194416-0	SHEET 10000 SET		1			
F07	194417-8	RUBBER SHEET 10000 SET		1			
F08	194418-6	POSITION SHEET 1400 SET		1			
F09	194910-2	POSITION SHEET 1900 SET		1			
001	286288-8	CAP 35		1			
002	452986-8	CHUCK COVER		1	*		
002-1	456529-8	CHUCK COVER	S	1			
003	325813-1	RING 21		1			
004	346177-0	GUIDE WASHER		1			
005	233916-6	CONICAL COMP. SPRING 21-29		1			
006	233989-9	RING SPRING 14		1			
007	346221-3	WASHER 16		1	*		
007-1	346834-0	WASHER 16	S	1			
013	265795-4	THUMB SCREW M6X52		1			
014	267415-6	FLAT WASHER 33		1			
015	452985-0	GRIP 34		1			
016	143120-8	GEAR HOUSING COMPLETE		1			
C10	213636-8	OIL SEAL 25		1			
017	346178-8	CUP SLEEVE		1			
018	211423-9	BALL BEARING 6806DDW		1			
019	232152-1	LEAF SPRING		1			
020	325785-0	PUSH CORN		1			
021	234147-0	COMPRESSION SPRING 5		1			
022	253308-3	THIN WASHER 6		1			
023	213258-4	O RING 17.5		1			
024	452983-4	CHANGE LEVER		1			
025	452982-6	CHANGE LEVER COVER		1			
026	216022-2	STEEL BALL 7.0		2			
027	216019-1	STEEL BALL 3		4			
028	141068-8	TOOL HOLDER COMPLETE		1	*		
028-1	144273-6	TOOL HOLDER COMPLETE	<	1			
031	267153-0	FLAT WASHER 30		1			
032	234222-2	COMPRESSION SPRING 31		1			
033	227268-5	SPUR GEAR 51		1			
034	313218-7	DRIVING FLANGE		1			
035	267153-0	FLAT WASHER 30		1			
036	213075-2	X-RING 9		1			
037	325782-6	SLEEVE 9A		1			
038	325789-2	IMPACT BOLT A		1			
039	325794-9	RING 10A		1			
040	424267-0	CUSHION RING 12		1			
041	325798-1	O-RING CASE A		1			

042	213073-6	O RING 9		1		
043	233979-2	RING SPRING 28		1		
044	326096-6	STRIKER		1		
045	213258-4	O RING 17.5		1		
046	310345-1	PISTON CYLINDER		1		
047	346036-8	GUIDE PLATE		1		
048	326097-4	PISTON JOINT		1	*	
048-1	324215-8	PISTON JOINT	O	1		
049	234098-7	COMPRESSION SPRING 14		1		
050	210028-2	BALL BEARING 606ZZ		1		
056	227269-3	SPUR GEAR 10		1		
057	223174-2	CLUTCH CAM		1		
058	219021-3	SWASH BEARING 10		1		
059	257321-3	RING 8		1		
060	310344-3	BEARING BOX		1		
061	210029-0	BALL BEARING 608ZZ		1		
062	266437-3	HEX. SOCKET HEAD BOLT M4X16		2		
063	285735-6	BEARING RETAINER		1		
064	227748-1	HELICAL GEAR 27		1		
065	213727-5	O-RING 63		1		
069	141664-2	INNER HOUSING COMPLETE		1		
C10	443153-6	FELT		1		
070	213407-3	O RING 26		1		
071	213678-2	OIL SEAL 12		1		
072	262571-7	SLEEVE 8		1		
073	210067-2	BALL BEARING 6000ZZ		1		
074	267213-8	FLAT WASHER 10		1		
075	240084-8	FAN 60		1		
076	515859-7	ARMATURE ASSEMBLY 240V		1		
D10		INC. 72-75,77,78				
077	681652-2	INSULATION WASHER		1		
078	210030-5	BALL BEARING 627ZZ		1		
079	267804-5	WAVE WASHER 15		1		
083	266334-3	TAPPING SCREW 4X60		2		
084	452984-2	BAFFLE PLATE		1		
085	633793-0	FIELD 220-240V		1		
086	453915-4	MOTOR HOUSING		1	*	
086-1	452979-5	MOTOR HOUSING	<	1	*	
086-2	413568-5	MOTOR HOUSING	>	1		
087	850W86-0	M8700 NAME PLATE		1		
088	890304-6	CLEAR LABEL		1	*	
089	194722-3	CARBON BRUSH CB-459		1	*	
089-1	195026-6	CARBON BRUSH SET CB-459	O	1		
090	638747-2	BRUSH HOLDER UNIT		1		
092	266361-0	TAPPING SCREW 4X30		4		
093	850W88-6	M8700 SERIAL NO. LABEL		1		
094	890297-7	CLEAR LABEL		1		
095	682566-8	CORD GUARD 10		1		
096	665890-4	POWER SUPPLY CORD 1.0-2-4.0		1	*	
096-1	695490-6	POWER SUPPLY CORD 1.0-2-4.0	O	1	*	
096-2	665890-4	POWER SUPPLY CORD 1.0-2-4.0	O	1		
097	650671-9	SWITCH TG853TB-1C		1		

098	645190-8	NOISE SUPPRESSOR		1		
099	687682-1	STRAIN RELIEF		1		
100	266385-6	TAPPING SCREW 4X14		1		
101	266326-2	TAPPING SCREW 4X18		1		
102	453916-2	HANDLE COVER		1	*	
102-1	452981-8	HANDLE COVER	<	1	*	
102-2	413572-4	HANDLE COVER	<	1		
103	266326-2	TAPPING SCREW 4X18		2		
104	267447-3	FLAT WASHER 14		1		
105	233992-0	RING SPRING 15		1		
106	267437-6	FLAT WASHER 17		1	*	
106-1	267114-0	FLAT WASHER 17	S	1		
107	424364-2	RUBBER WASHER 16		1	*	
A01	321144-6	DEPTH GAUGE		1		
A02	821660-3	PLASTIC CARRYING CASE		1		
C10	452432-1	SLIDE LATCH		2		
C20	806G57-9	MAKITA MT LOGO LABEL		1		
A03	806N84-8	M8700 PLASTIC CASE LABEL		2	*	
A03-1	807W93-4	M8700 PLASTIC CASE LABEL	<	2		
B01	195796-7	HAMMER SERVICE KIT		1		
C10	195127-0	OIL VESSEL SET		2		
D10		INC. 1,6,26,36,40,42,43,45,89				
D20		INC. 105,107				
F01	195127-0	OIL VESSEL SET		1		

Please state Parts No. when your order.

Print Date 03/01/2024