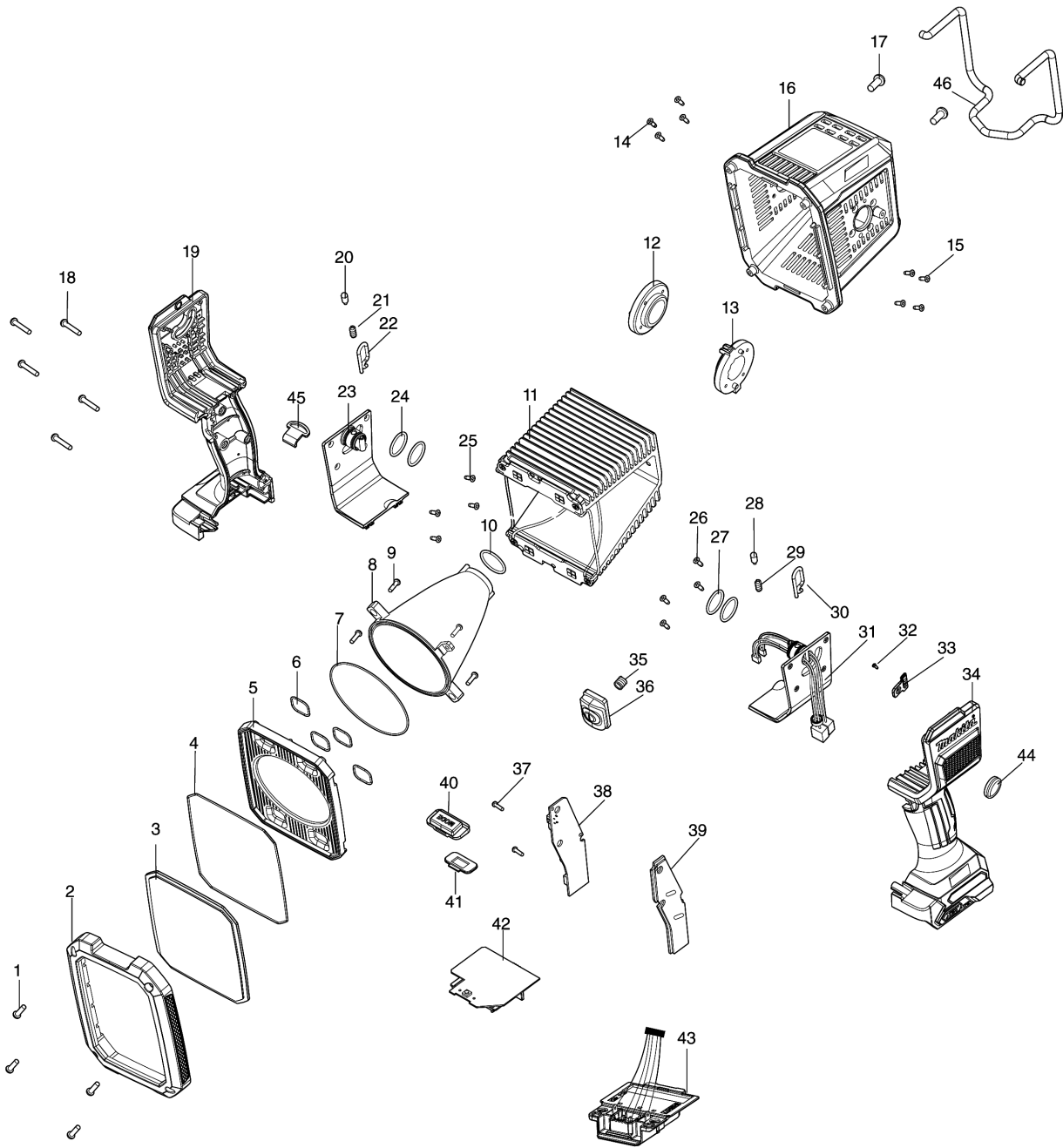


Model No.ML007G CORDLESS FLASHLIGHT



Model No.ML007G CORDLESS FLASHLIGHT

Item	Parts No.	Description	I/C	Qty	New/Old	Opt. 1	Opt. 2	Note
001	GM00001332	SCREW 3 X 8 PB		4				
002	GM00002360	LENS COVER ASSY		1				
003	GM00002204	LENS		1				
004	GM00002205	LENS O-RING		1				
005	GM00002206	REFLECTION CUP COVER		1				
006	GM00002207	LED O-RING		4				
007	GM00002208	O-RING		1				
008	GM00002209	REFLECTION CUP		1				
009	GM00001322	SCREW 2.6X8 PB		4				
010	GM00002211	O-RING		1				
011	GM00002362	LED & HEAT SINK ASS LED		1				
012	GM00002218	RIGHT LATCH PLATE		1				
013	GM00002217	LEFT LATCH PLATE		1				
014	GM00002219	SCREW 2.6X7 KB		4				
015	GM00002219	SCREW 2.6X7 KB		4				
016	GM00002363	LIGHT HEAD CASE ASSY		1				
017	GM00002212	SCREW 3X8 PM		2				
018	GM00001012	SCREW 3X12 PB BLACK ZN		5				
019	GM00002364	LEFT & RIGHT HOUSING ASSY		1				
D10		INC. 34						
020	GM00002225	LATCH PIN		1				
021	GM00002224	COMPRESSION SPRING		1				
022	GM00002251	SPRING CLIP 2X10X25		1				
023	GM00002371	RIGHT HOUSING COVER		1				
024	GM00002226	SHAFT O-RING		2				
025	GM00002219	SCREW 2.6X7 KB		4				
026	GM00002219	SCREW 2.6X7 KB		4				
027	GM00002226	SHAFT O-RING		2				
028	GM00002225	LATCH PIN		1				
029	GM00002224	COMPRESSION SPRING		1				
030	GM00002251	SPRING CLIP 2X10X25		1				
031	GM00002365	LEFT HOUSING COVER ASSY		1				
032	GM00002250	SCREW 2.0X5 KB		1				
033	GM00002222	LINE PRESSING BLOCK		1				
034	GM00002364	LEFT & RIGHT HOUSING ASSY		1				
D10		INC. 19						
035	GM00002249	SWITCH SPRING		1				
036	GM00002230	WHITE SWITCH ASSY		1				
037	GM00001322	SCREW 2.6X8 PB		2				
038	GM00002367	MAIN PCBA(SMD+ DIP)		1				
039	GM00002366	SILICONE & HEAT SINK(IC)		1				
040	GM00002368	DIMMER SWITCH RUBBER		1				
041	GM00002369	SWITCH SUPPORT		1				
042	GM00002370	ML007G FUSE PCB SP (ROHS)		1	*			
042-1	GM00002493	FUSE PCB SP (ROHS)	<	1				

Please order the parts with part number.

Print Date 26/10/2023

Model No.ML007G CORDLESS FLASHLIGHT

Item	Parts No.	Description	I/C	Qty	New/Old	Opt. 1	Opt. 2	Note
043	GM00002374	BATTERY HOLDER ASSY		1				
044	GM00002284	RING		1				
045	GM00002231	STRAP HOOK		1				
046	GM00002372	HANGING HOOKS		1				
A01	GM00002373	HAND STRAP WITH METAL STRAP HO		1				

Please order the parts with part number.

Print Date 26/10/2023