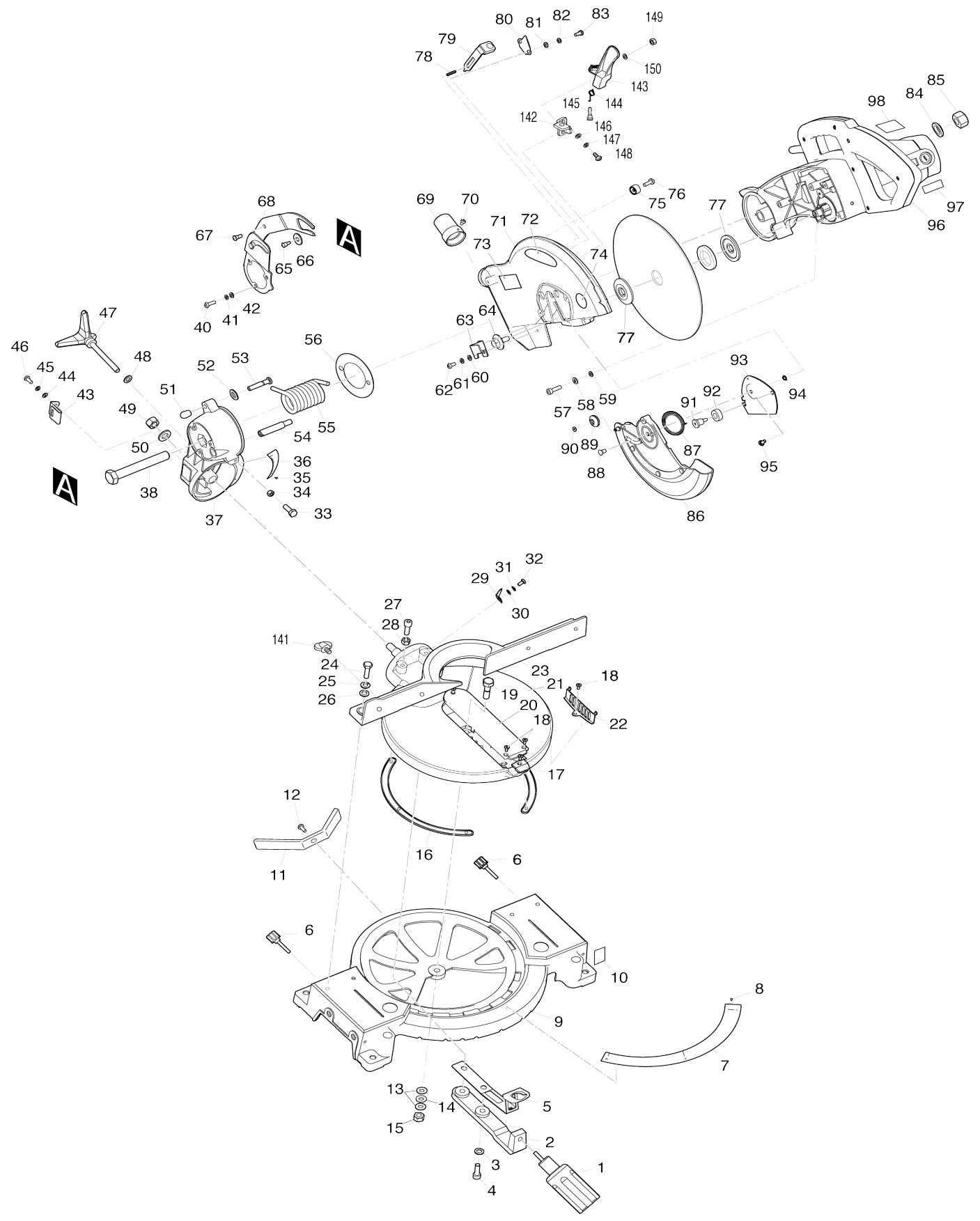
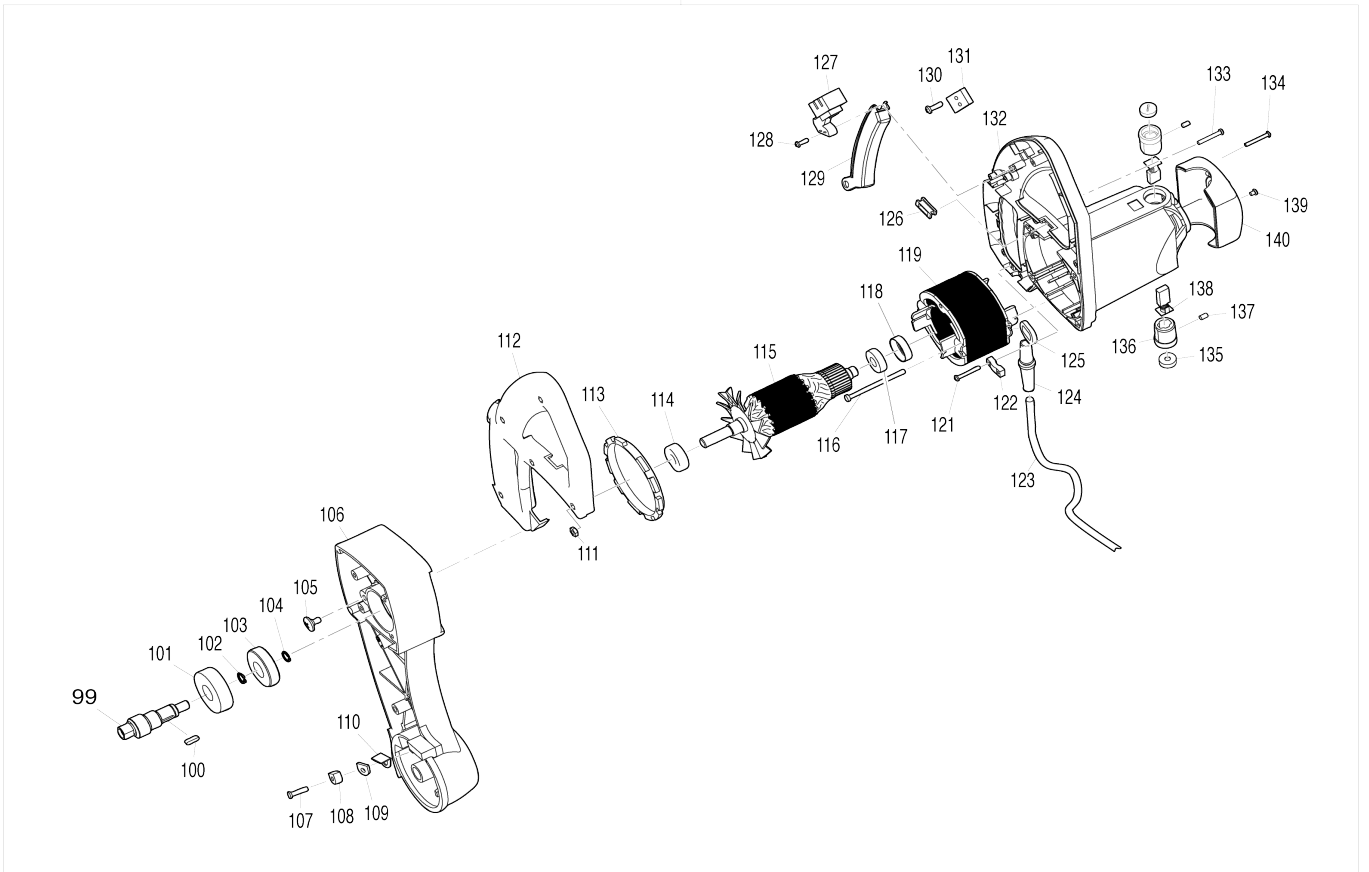


Model No.MLS100 MITER SAW





Model No.MLS100 MITER SAW

Item No.	Parts No.	Description	Interchangeability	Q'ty	New/Old	Note1	Note2
001	JM23000001	GRIP		1			
002	JM23000002	HANDLE BRACKET		1			
003	JM23000003	SPRING WASHER8		2			
004	JM23000004	HEX SOCKET HEAD BOLT M8X25		2	*		
004-1	JM00000207	HEX SOCKET HEAD BOLT M8X30	<	1			
005	JM23000005	KNOCK SPRING		1	*		
005-1	JM23000200	KNOCK SPRING SET	<	1			
D10		INC. 152,153					
006	JM23000006	LOCK KNOB FOR EXT.WINGS		2			
007	JM23000007	MITER ANGLE LABEL		1	*		
008	JM23000008	RIVET		2	*		
009	JM23000009	BASE COMP		1	*		
D10		INC. 7,8,10					
009-1	JM00000066	BASE COMP	O	1			
D10		INC. 10,177					
D11		INC. 177					
010	810965-6	CAUTION LABEL		1	*		
011	JM23000011	BASE SUPPORTER		1			
012	JM23000012	SCREW		1			
013	JM23000013	FLAT WASHER10		2	*		
013-1	JM23000013	FLAT WASHER10	O	1			
014	JM23000014	WAVE WASHER 6		1			
015	JM23000015	HEX NUT M10		1			
016	JM23000016	SLIDE PLATE		2			
017	JM23000017	MITER ANGLE POINTER		1			
018	JM23000018	COUNTERSUNK HEAD SCREW M4 X10		5	*		
018-1	JM23000018	COUNTERSUNK HEAD SCREW M4 X10	O	3			
019	JM23000019	PIVOT		1			
020	JM23000141	KERF BOARD BLUE		1	*		
020-1	JM23000141	KERF BOARD BLUE	O	1			
021	JM23000021	TURN BASE COMP.		1			
022	JM23000022	PROTECTION NET		1			
023	JM23000023	GUIDE RULE		1	*		
023-1	JM23000204	GUIDE RULE	S	1			
024	JM23000024	HEX.BOLT M8X30		4			
025	JM23000003	SPRING WASHER8		4			
026	JM23000026	FLAT WASHER8		4			
027	JM23000027	HEX. BOLT M8 X 20		2	*		
027-1	JM23000024	HEX.BOLT M8X30	X	2			
028	JM23000028	HEX. NUT M8		2			
029	JM23000029	BEVEL POINTER		1			
030	JM23000030	FLAT WASHER5		1			
031	JM23000031	SPRING WASHER5		1	*		
032	JM23000032	PAN HEAD SCREW M5 X 10		1			
033	JM23000033	HEX. BOLT M8X16		1			
034	JM23000028	HEX. NUT M8		1			

035	JM23000034	RIVET		2	*		
036	JM23000035	SCALE LABEL		1	*		
037	JM23000036	ARM COMPLETE		1			
D10		INC. 35,36					
038	JM23000037	SHAFT		1			
039	JM23000038	LINK SUPPORT PLATE		1	*		
039-1	JM23000038	LINK SUPPORT PLATE		1			
040	JM23000039	PAN HEAD SCREW M6 X 16		3			
041	JM23000040	SPRING WASHER6		3			
042	JM23000041	FLAT WASHER6		3			
043	JM23000042	CLIP		1			
044	JM23000030	FLAT WASHER5		1			
045	JM23000031	SPRING WASHER5		1			
046	JM23000032	PAN HEAD SCREW M5 X 10		1			
047	JM23000143	KNOB BOLT M10 BLUE		1	*		
047-1	JM23000143	KNOB BOLT M10 BLUE	O	1			
048	JM23000013	FLAT WASHER10		1			
049	JM23000044	ANTI-LOOSE NUTM12		1			
050	JM23000045	FLAT WASHER12		1			
051	JM23000046	LOCK PIN CAP		1			
052	JM23000047	O RING		1			
053	JM23000048	PIN		1			
054	JM23000049	LIMIT PIN		1			
055	JM23000050	TORSIONAL SPRING		1			
056	JM23000051	RING		1			
057	JM23000052	HEX. SOCKET HEAD BOLT M6 X 20		4			
058	JM23000040	SPRING WASHER6		4			
059	JM23000041	FLAT WASHER6		4			
060	JM23000030	FLAT WASHER5		2			
061	JM23000031	SPRING WASHER5		2			
062	JM23000032	PAN HEAD SCREW M5 X 10		2	*		
062-1	JM23000069	PAN HEAD SCREW M5X12	X	2			
063	JM23000053	PLATE		1			
064	JM23000054	BLADE LOCK BOLT M8X20(LH)		1	*		
064-1	JM23000054	BLADE LOCK BOLT M8X20(LH)	O	1			
065	JM23000055	STEPPED BOLT M5		1			
066	JM23000056	BUSH		1			
067	JM23000057	STEPPED BOLT M6		1			
068	JM23000058	LINK COMP.		1			
069	JM23000059	DUST NOZZLE		1	*		
069-1	JM23000178	DUST NOZZLE 38	<	1	*		
069-2	JM23000059	DUST NOZZLE	O	1	*		
069-3	JM23000178	DUST NOZZLE 38	O	1			
070	JM23000060	PAN HEAD SCREW M4		1	*		
070-1	JM23000060	PAN HEAD SCREW M4	O	2	*		
070-2	JM23000138	PAN HEAD SCREW M4X10	X	2			
071	JM23000146	BLADE CASE COMP.		1	*		
D10		INC. 72-74					
071-1	JM23000180	BLADE CASE COMP.	O	1	*		
D10		INC. 72-74					
071-2	JM00000065	BLADE CASE COMPLETE	X	1			

072	JM23080002	MAKITA LABEL		1		
073	817667-5	CAUTION LABEL		1		
074	810968-0	CAUTION LABEL		1		
075	JM23000063	LIMIT RING		1		
076	JM23000064	SCREW		1	*	
077	JM23000065	FLANGE		2		
078	JM23000066	LOCK SPRING		1		
079	JM23000067	SHAFT LOCK		1		
080	JM23000068	COVER		1		
081	JM23000030	FLAT WASHER5		2		
082	JM23000031	SPRING WASHER5		2	*	
082-1	JM23000025	SPRING WASHER8	X	2		
083	JM23000069	PAN HEAD SCREW M5X12		2		
084	JM23000070	FLAT WASHER16		1		
085	JM23000071	ANTI-LOOSE NUT16		1		
086	JM23000072	SAFETY COVER COMP.		1		
087	JM23000073	TORSION SPRING		1		
088	JM23000074	SQUARE NECK BOLTM6X10		1		
089	JM23000075	WHEEL		1		
090	JM23000076	PUSH NUT		1		
091	JM23000077	STEPPED BOLT M6		1		
092	JM23000078	RUBBER SLEEVE		1		
093	JM23000079	FIX PLATE		1		
094	JM23000080	ANTI-LOOSE NUTM6		1		
095	JM23000081	STEPPED BOLT M5		1		
097	810964-8	CAUTION LABEL		1		
098	JM23080055	NAME PLATE		1		
099	JM23000084	SPINDLE		1		
100	JM23000085	KEY5X10		1		
101	JM23000086	BALL BEARING 6304-RZ		1		
102	JM23000087	RETAINING RING S-20		1		
103	JM23000088	HELICAL GEAR		1		
104	JM23000089	RETAINING RING S-16		1		
105	JM23000090	TRUSS HEAD SCREW M8X12		1		
106	JM23000091	GEAR HOUSING COMP.		1		
107	JM23000092	PAN HEAD SCREW M5 X 25		1	*	
107-1	JM23000092	PAN HEAD SCREW M5 X 25	O	1		
108	JM23000093	LIMIT PLATE		1		
109	JM23000094	LIMIT PAD		1		
110	JM23000095	ADJUST PAD		1		
111	JM23000096	HEX.NUTM4		6		
112	JM23000195	HANDLE COVER		1	*	
112-1	JM23000149	HANDLE COVER	S	1	*	
112-2	JM00000021	HANDLE COVER BLUE	X	1		
113	JM23000098	FAN GUIDE		1		
114	JM23000099	BALL BEARING 6201Z		1		
115	JM23000100	ARMATURE ASS'Y (230V)		1		
D10		INC. 114,117				
116	JM23000101	SELF TAPING SCREWST4.8X70		2		
117	JM23000102	BALL BEARING 6001Z		1		
118	JM23000103	RUBBER RING		1		
119	JM23000104	FIELD ASS'Y (230V)		1		

D10		INC. 120				
120	JM23000105	NOISE SUPPRESSOR		2	*	
120-1	JM23000105	NOISE SUPPRESSOR	O	1	*	
121	JM23000106	SELF TAPING SCREWST4.2X12		2		
122	JM23000107	STRAIN RELIEF		1		
123	JM23000156	POWER SUPPLY CORD ASSY EUR O		1		
124	JM23000109	CORD GUARD		1		
125	JM23000110	CHOKE COIL		1	*	
125-1	JM23000110	CHOKE COIL	O	1		
126	JM23000111	CLAMP		1		
127	JM23000112	SWITCHCB21-B		1	*	
127-1	JM00000067	SWITCH	X	1		
128	JM23000113	SELF TAPING SCREWST 3X8		2	*	
128-1	JM23000106	SELF TAPING SCREWST4.2X12	X	2		
129	JM23000114	SWITCH LEVER		1	*	
129-1	JM00000272	SWITCH LEVER	X	1		
130	JM23000115	SELF TAPING SCREWST4.2X12		2	*	
130-1	JM00000211	TAPING SCREW ST2.9X17	X	2		
131	JM23000116	TERMINAL BASE		1		
132	JM23000194	MOTOR HOUSING COMP.		1	*	
D10		INC. 97,136,137				
132-1	JM23000151	MOTOR HOUSING COMP.	S	1	*	
D10		INC. 97,136,137				
132-2	JM00000019	MOTOR HOUSING COMP BLUE	X	1		
D10		INC. 97				
133	JM23000118	PAN HEAD SCREW M4X30		6	*	
133-1	JM00000212	TAPPING SCREW ST2.9X30	X	1		
134	JM23000119	SELFTAPPING SCREW		1	*	
134-1	JM00000214	PAN HEAD SCREW M5X25	X	4		
135	JM23000120	BRUSH HOLDER CAP		2		
136	JM23000121	BRUSH HOLDER		2	*	
137	JM23000122	HEX. SOCKET HEAD BOLT M5 X 8		2	*	
138	JM23000123	CARBON BRUSH 2PCS/SET		1		
139	JM23000124	SELF TAPING SCREWST5.2X12		2	*	
139-1	JM00000213	SELF TAPING SCREW ST4.8X9	X	2		
140	JM23000125	MOTOR REAR COVER		1		
141	JM23000126	WING BOLT M6X12		1		
142	JM23000132	BRACKET		1	*	
143	JM23000133	LOCK LEVER		1	*	
144	JM23000134	SPRING		1	*	
145	JM23000135	SCREW M5		1	*	
146	JM23000136	FLAT WASHER4		2	*	
147	JM23000137	SPRING WASHER4		2	*	
148	JM23000138	PAN HEAD SCREW M4X10		2	*	
149	JM23000139	ANTI-LOOSE NUTM5		1	*	
150	JM23000030	FLAT WASHER5		1	*	
151	JM23000183	CAPACITOR		1	*	
151-1	JM23000183	CAPACITOR		1		
152	JM23000185	LOCKING KNOB		1		
153	JM23000005	KNOCK SPRING		1		
154	JM23000138	PAN HEAD SCREW M4X10		1		

155	JM23000138	PAN HEAD SCREW M4X10		1		
156	JM23000136	FLAT WASHER4		2		
157	JM23000118	PAN HEAD SCREW M4X30		5		
162	JM23000014	WAVE WASHER 6		1		
164	JM00000210	PAN HEAD SCREW M4X28		1		
165	JM23000030	FLAT WASHER5		4		
166	JM23000030	FLAT WASHER5		2		
167	JM23000137	SPRING WASHER4		1		
168	JM23000136	FLAT WASHER4		1		
169	JM00000206	FLAT HEAD SCREW M4X8		1		
170	JM23000040	SPRING WASHER6		1		
171	JM23000041	FLAT WASHER6		1		
172	JM23000013	FLAT WASHER10		1		
173	JM23000004	HEX SOCKET HEAD BOLT M8X25		1		
174	JM00000208	CONE WASHER 6		1		
177	JM2708B060	CAUTION LABEL		2		
188	JM23000136	FLAT WASHER4		2		
195	JM23180056	CAUTION LABEL		1		
A01	JM23000127	HOLDER		2		
A02	JM23000128	SET PLATE		2		
A03	JM23000129	WING BOLT M6X20		1		
A04	JM23000130	WRENCH 13		1		
A05	JM23000131	WISE ASS'Y		1		
A06	122523-9	DUST BAG ASS'Y		1	*	
A06-1	122852-0	DUST BAG ASS'Y	O	1	*	
A06-2	JM23000174	DUST BAG ASSEMBLY	O	1		
A07	762001-3	TRIANGULAR RULE		1		
A08	JM23000172	SAW BLADE 255-30		1	*	
A08-1	JM00000388	SAW BLADE 255-30	O	1		
A09	JM23100144	RING 30		1		
E01	JM23010001	SUB FENCE COMPLETE	S	1		
C10	JM23380067	CAUTION LABEL		1		
E02	JM23000201	COUNTERSUNK HEAD SCREW M6 X25	S	1		
E03	JM23100110	HEX LOCK NUT M6	S	1		
E04	JM23000202	FIX PLATE	S	1		
E05	JM23100033	PAN HEAD SCREW M4X12	S	1		
E06	JM23000137	SPRING WASHER4	S	1		
E07	JM23100071	THIN FLAT WASHER 6	S	1		
E08	JM23000136	FLAT WASHER4		1		

Please state Parts No. when your order.

Print Date 26.10.2023