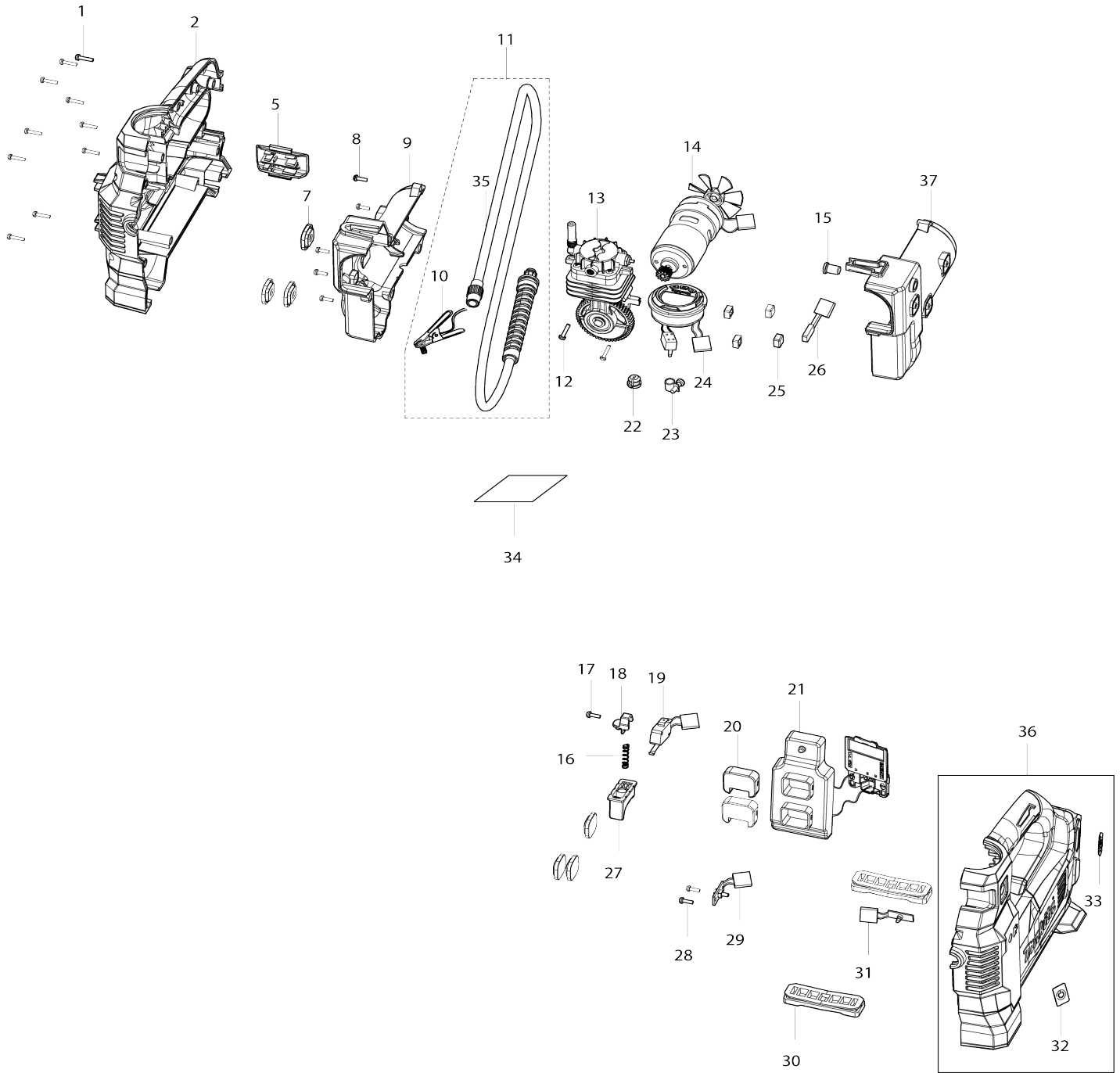


Model No.MP001G CORDLESS INFLATOR



Model No.MP001G CORDLESS INFLATOR

Item No.	Parts No.	Description	Interchangability	Q'ty	New/Old	Note1	Note2
001	TE0000028	TAPPING SCREW 3X14		10			
002	TE00000591	HOUSING SET		1			
D10		INC. 32,33,36					
D11		INC. 36					
005	TE00000593	FIXED BRACKET		1			
007	TE00000595	INNER PAD		6			
008	TE0000029	TAPPING SCREW 3X10		5			
009	TE00000596	INNER HOUSING SET		1			
D10		INC. 37					
010	TE00000597	BRITISH ADAPTER		1			
011	TE00000598	HOSE ASSEMBLY		1			
D10		INC. 10					
012	TE00000624	SCREW 4X6		2			
013	TE00000625	CYLINDER COMPLETE		1			
014	TE00000599	MOTOR ASSEMBLY		1			
015	TE00000600	RELEASE VALVE BUTTON		1			
016	TE00000330	SPRING		1			
017	TE0000029	TAPPING SCREW 3X10		1			
018	TE00000328	TRIGGER SPRING-FIXED BLOCK		1			
019	TE00000601	SWITCH		1	*		
019-1	TE00000601	SWITCH	O	1			
020	TE00000602	PLATE		2			
021	TE00000603	CONTROLLER ASSY		1	*		
021-1	TE00000694	CONTROLLER ASSY	<	1			
022	TE00000604	PLUG		1			
023	TE00000352	CLAMP		1			
024	TE00000605	DIGITAL DISPLAY		1			
025	TE00000606	PAD		4			
026	TE00000607	THERMAL PROTECTOR		1			
027	TE00000485	SWITCH TRIGGER		1			
028	TE0000029	TAPPING SCREW 3X10		2			
029	TE00000608	POWER SWITCH		1			
030	TE00000609	MAT		2			
031	TE00000610	LED CIRCUIT		1			
032	TE00000426	SWITCH LABEL		1			
033	TE00000611	XGT LABEL		1			
034	TE00000612	NAME PLATE		1			
036	TE00000591	HOUSING SET		1			
D10		INC. 2,32,33					
D11		INC. 2					
037	TE00000596	INNER HOUSING SET		1			
D10		INC. 9					
A01	TE00000592	BALL ADAPTER		1			
A02	TE00000333	SWIM RING ADAPTER		1			
A03	TE00000594	FRENCH ADAPTER		1			
F01	TE00000691	AIR CHUCK		1			
F02	TE00000796	AIR CHUCK		1			

Please state Parts No. when your order.

Print Date 26.10.2023