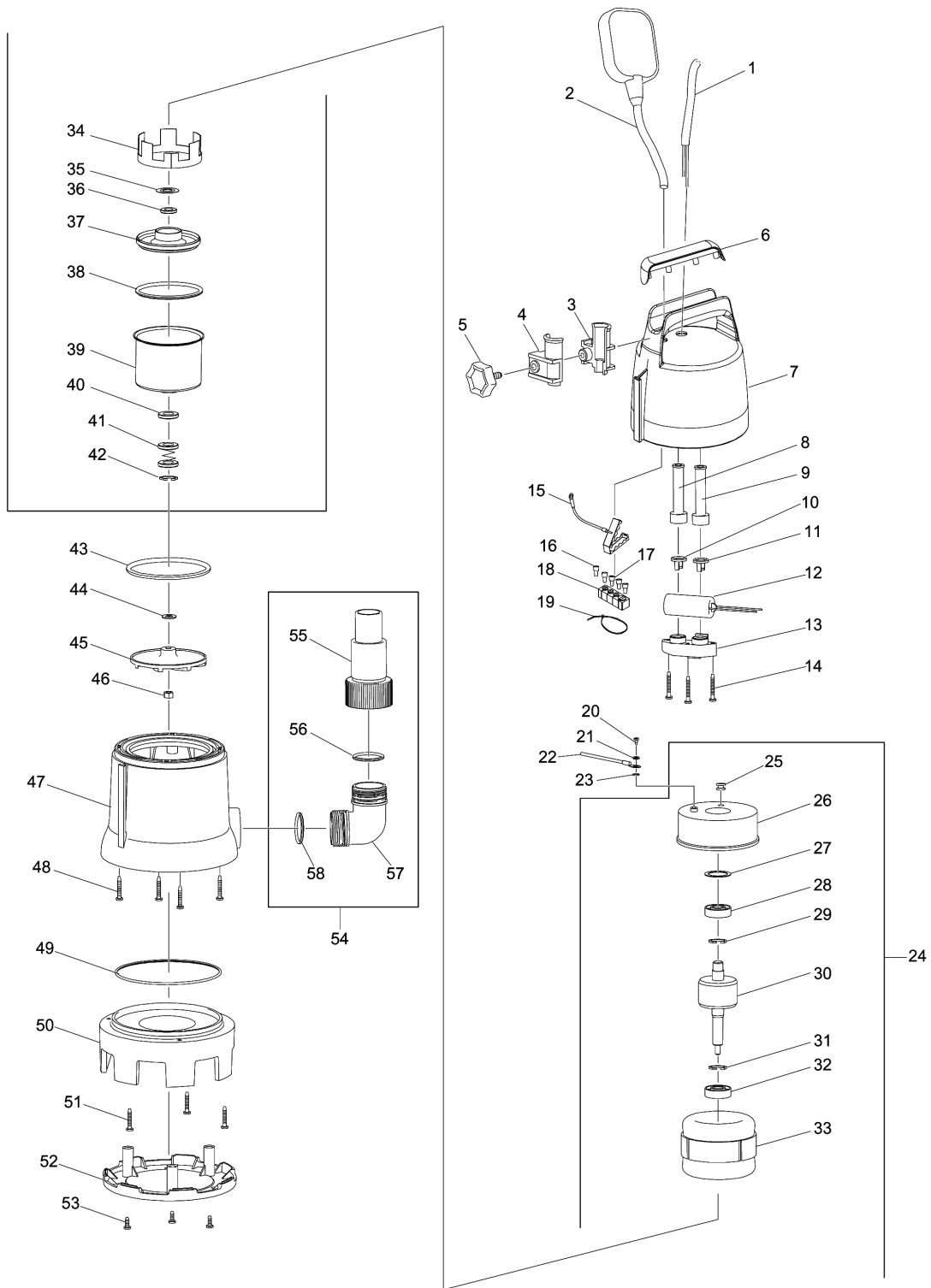


# Model No.PF1010 SUBMERSIBLE PUMP



Model No.PF1010 SUBMERSIBLE PUMP

Item	Parts No.	Description	I/C	Qty	New/Old	Opt. 1	Opt. 2	Note
001	609025435	POWER SUPPLY CORD 1.0-3-10		1	*			
001-1	JH00000123	CORD H07RN-F 1.0-3-10 EU	<	1				
002	609026209	FLOAT SWITCH BLUE		1	*			
002-1	JH00000126	FLOAT SWITCH BLUE	<	1				
003	609026210	CORD CLAMP BODY SIDE		1	*			
003-1	JH00000078	CORD CLAMP BODY SIDE	O	1				
004	609026211	CORD CLAMP THUMB SCREW SIDE		1	*			
004-1	JH00000079	CORD CLAMP THUMB SCREW SIDE	O	1				
005	609026212	THUMB SCREW M5X16		1				
006	609024586	HANDLE COVER MAKITA		1	*			
007	609026219	UPPER HOUSING BLUE		1	*			
007-1	JH00000040	UPPER HOUSING BLUE	X	1				
008	609024588	CORD GUARD 8.5		1	*			
008-1	JH00000110	CORD GUARD 8.5	<	1				
009	609024588	CORD GUARD 8.5		1	*			
009-1	JH00000110	CORD GUARD 8.5	<	1				
010	609024590	CORD CLAMP 8.5		1				
011	609024590	CORD CLAMP 8.5		1				
012	JH00000045	CAPACITOR 16 MICRO F		1	*			
012-1	JH00000182	CAPACITOR 16 MICRO F	O	1				
013	609024592	CAPACITOR HOLDER		1				
014	609024593	TAPPING SCREW 4X32		3				
015	609024628	GROUND COVER FOR RUBBER COVER		1				
016	609024629	CLOSED END SPLICE 5.5-SD		2				
017	609024630	CLOSED END SPLICE 2-SD		3				
018	609024631	RUBBER COVER FOR 4 SPLICE		1	*			
018-1	JH00000116	RUBBER COVER FOR 4 SPLICE	<	1				
019	609024632	CABLE TIE		1	*			
019-1	609024632	CABLE TIE		1				
020	609024601	SCREW M4X8		1				
021	609024596	SPRING WASHER 4		1				
022	JH00000004	GROUND WIRE ASSY		1				
023	609024600	TOOTHED LOCK SPRING WASHER 4		1	*			
023-1	JH00000082	TOOTHED LOCK SPRING WASHER 4	<	1				
024	JH00000067	MOTOR ASSY 230V 50HZ		1				
D10		INC. 25-42			*			
D11		INC. 25-28, 30, 32-42						
025	609024595	GROMMET 10		1				
026	609024594	MOTOR HOUSING UPPER SIDE		1				
027	609024602	WAVE WASHER 25		1				
028	609024603	BALL BEARING 6201Z		1				
029	961052-5	RETAINING RING (EXT) S-12		1	*			

Please order the parts with part number.

Print Date 15/12/2023

Model No.PF1010 SUBMERSIBLE PUMP

Item	Parts No.	Description	I/C	Qty	New/Old	Opt. 1	Opt. 2	Note
030	JH00000053	ROTOR		1				
031	961052-5	RETAINING RING (EXT) S-12		1	*			
032	609024603	BALL BEARING 6201Z		1				
033	JH00000054	STATOR ASSY 230V 50HZ		1				
034	609024679	LINING RING		1	*			
034-1	609024667	LINING RING	X	1				
035	609024607	SHIM		1				
036	609024608	SKELETON SEAL RING		1	*			
036-1	JH00000111	SKELETON SEAL RING	<	1				
037	609024609	BEARING BOX		1				
038	609024610	O-RING		1	*			
038-1	JH00000112	O-RING	<	1				
039	JH00000055	MOTOR HOUSING LOWER SIDE		1				
040	609024608	SKELETON SEAL RING		1	*			
040-1	JH00000111	SKELETON SEAL RING	<	1				
041	609024633	MECHANICAL SEAL		1	*			
042	609024634	RETAINING RING S-12 INOX		1				
043	609024612	O-RING		1	*			
043-1	JH00000113	O-RING	<	1				
044	609024613	SPACER WASHER 12		1				
045	JH00000056	IMPELLER		1				
046	609024615	NYLON INSERT HEX LOCK NUT M8		1				
047	609024682	MAIN PUMP SHELL		1				
C10	216013-3	STEEL BALL 6		1				
048	609024620	Y-HEAD TAPPING SCREW 4X28 INOX		4				
049	609024621	O-RING		1	*			
049-1	JH00000114	O-RING	<	1				
050	609024658	BASE		1				
051	609024659	SELF-TAPPING SCREW		3				
052	609024660	BOTTOM PLATE		1				
053	609026213	TAPPING SCREW 4.2X13 INOX		3				
054	JH00000005	OUTLET CONNECTOR KIT		1				
D10		INC. 55-58						
055	609024627	OUTLET CONNECTOR		1				
056	609024625	O-RING		1	*			
056-1	JH00000115	O-RING	<	1				
057	609024626	ELBOW		1				
058	609024625	O-RING		1	*			
058-1	JH00000115	O-RING	<	1				

Please order the parts with part number.

Print Date 15/12/2023