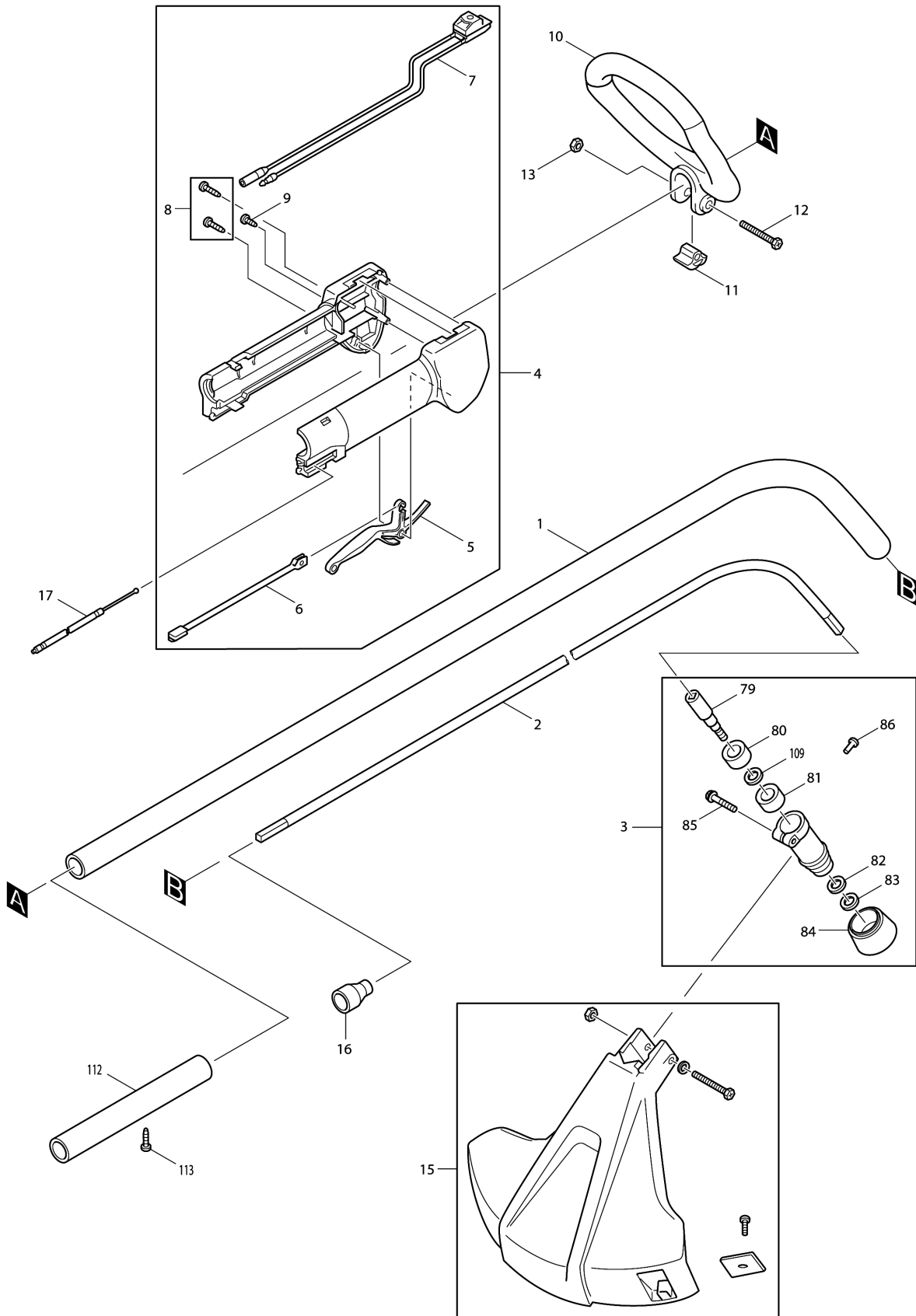
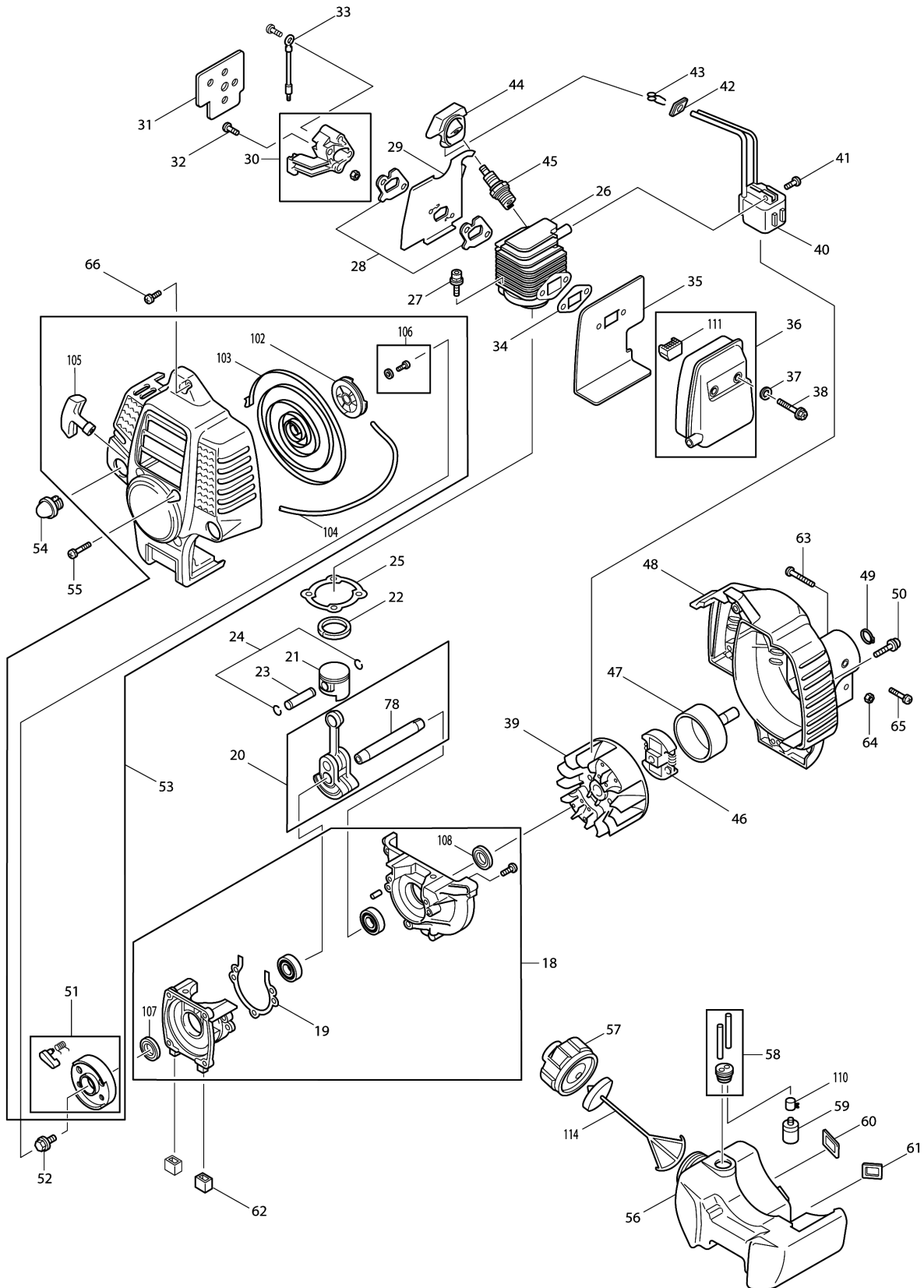


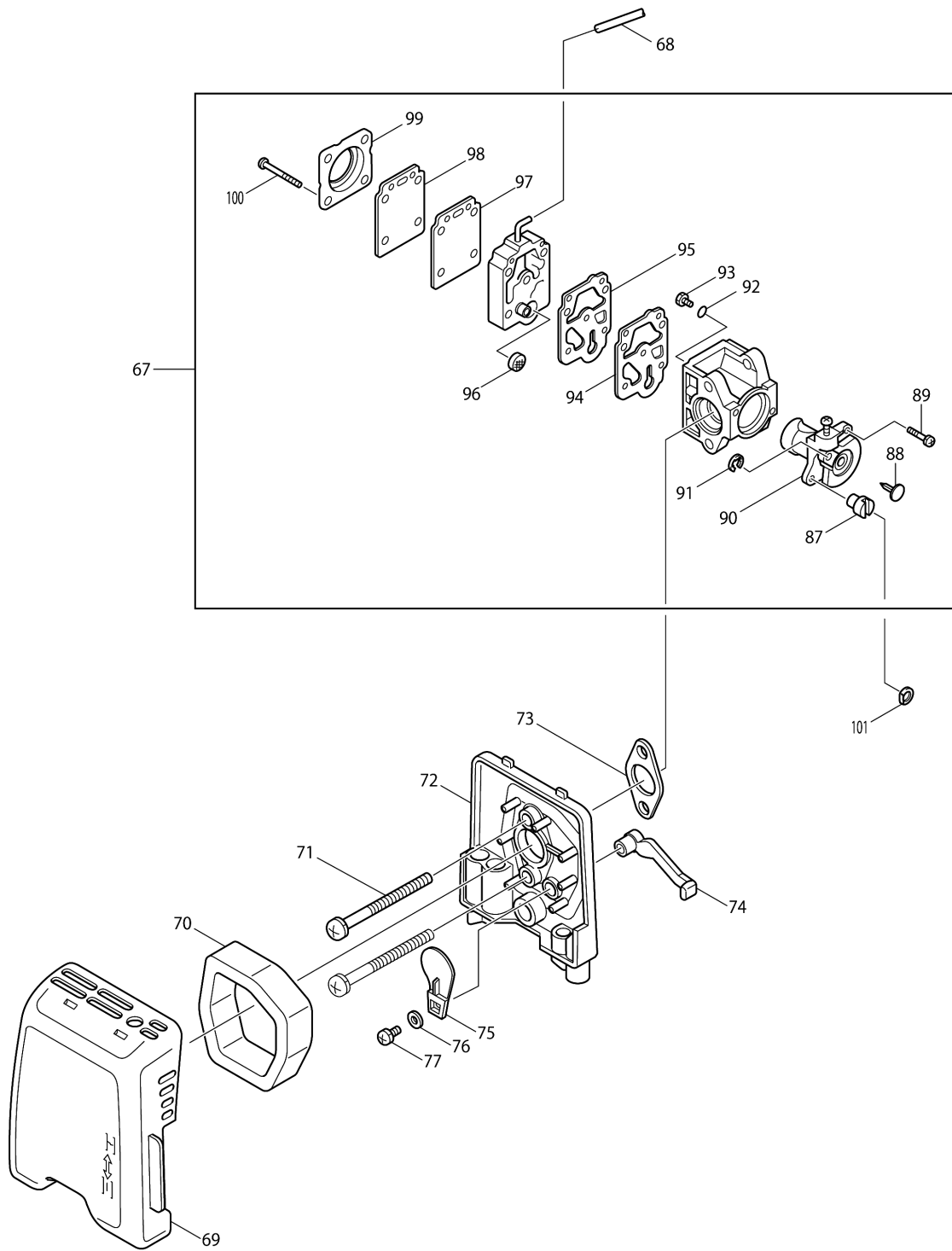
Model No.RST250 STRING TRIMMER



Model No.RST250 STRING TRIMMER



Model No.RST250 STRING TRIMMER



Model No.RST250 STRING TRIMMER

Item	Parts No.	Description	I/C	Qty	New/Old	Opt. 1	Opt. 2	Note
001	6161009000	FLEXIBLE PIPE UNIT	X	1	*			
D10		INC. 016			*			
001-1	6161011000	FLEXIBLE PIPE UNIT	S	1	*			
001-2	6161011001	FLEXIBLE PIPE UNIT	O	1				
002	6161005031	FLEXIBLE SHAFT		1				
003	6163002002	GEAR CASE COMPLETE		1	*			
D10		INC. 079-086			*			
003-1	6163003000	GEAR CASE COMPLETE	X	1				
D10		INC. 79-1,80-1,81-85,86-2,109						
004	6165006002	CONTROL LEVER ASS'Y		1	*			
D10		INC.005-009			*			
004-1	6165006003	CONTROL LEVER ASSY	X	1	*			
D10		INC. 5,6,7-1,8,9			*			
004-2	6165006004	CONTROL LEVER ASS'Y	S	1				
D10		INC. 5,6,7-1,8-1,9						
005	6165500601	LEVER		1				
006	6165500701	CONNECTOR		1				
007	6165009001	SWITCH COMPLETE		1	*			
007-1	6165009002	SWITCH COMPLETE	X	1	*			
007-2	632B99-5	SWITCH COMPLETE	O	1				
008	0150049920	TAPPING SCREW		2	*			
008-1	0150049920	TAPPING SCREW	S	3				
009	0150049910	TAPPING SCREW		1	*			
009-1	0150049911	TAPPING SCREW	O	1				
010	6164002002	HANDLE COMPLETE		1	*			
010-1	6164002003	HANDLE COMPLETE	O	1				
011	6164500200	SPACER		1				
012	0017006450	BOLT M6X45		1	*			
012-1	0100069820	CROSS RECESS BOLT	O	1	*			
012-2	265664-9	+HEX. BOLT M6X45 WITH G	O	1				
013	0023706000	FLANGE NUT M6		1	*			
013-1	264092-5	FLANGE NUT M6	O	1				
014	0031106000	WASHER		1	*			
015	6168004001	PROTECTOR ASS'Y		1	*			
015-1	6168004002	PROTECTOR A'SSY	X	1	*			
015-2	6168004003	PROTECTOR ASSEMBLY	O	1	*			
015-3	6168004004	PROTECTOR ASSEMBLY	<	1				
016	6161005041	SPACER		1				
017	0630039900	CONTROL CABLE		1				
018	5231011000	CRANKCASE COMPLETE		1	*			
D10		INC.019			*			
D11		INC. 19,107,108			*			
018-1	5231011001	CRANK CASE ASS'Y	O	1				
D10		INC. 19,107,108						
019	5231502202	CRANKCASE GASKET		1	*			

Please order the parts with part number.

Print Date 22/11/2023

Model No.RST250 STRING TRIMMER

Item	Parts No.	Description	I/C	Qty	New/Old	Opt. 1	Opt. 2	Note
019-1	424447-8	CRANK CASE GASKET	O	1				
020	5232015000	CRANKSHAFT COMPLETE		1	*			
020-1	5232011006	CRANKSHAFT COMPLETE	O	1	*			
D10		INC. 78-1			*			
020-2	5252016000	CRANKSHAFT COMPLETE	O	1	*			
D10		INC. 78-1			*			
020-3	5252016001	CRANKSHAFT COMPLETE	O	1	*			
D10		INC. 78-1			*			
020-4	140990-6	CRANKSHAFT COMPLETE	O	1	*			
D10		INC. 78-1			*			
020-5	144614-6	CRANK SHAFT COMPLETE	S	1				
D10		INC. 78-1						
021	5232501902	PISTON		1				
022	5242500701	PISTON RING		1	*			
022-1	257979-8	PISTON RING	O	1				
023	5232502600	PISTON PIN		1	*			
023-1	257781-9	PISTON PIN	O	1				
024	0565089970	CLIP		2	*			
024-1	233976-8	CLIP	O	2				
025	5231502302	CYLINDER GASKET		1	*			
025-1	5231502303	CYLINDER GASKET	O	1	*			
025-2	5231502304	CYLINDER GASKET	O	1	*			
025-3	442171-1	CYLINDER GASKET	O	1				
026	5231501802	CYLINDER		1	*			
026-1	5231501803	CYLINDER	X	1	*			
026-2	5231501804	CYLINDER	O	1	*			
026-3	318762-9	CYLINDER	O	1				
027	0119059730	SOCKET HEAD BOLT M5X20		2	*			
027-1	0140059700	SCREW ASS'Y M5X20	O	2	*			
027-2	0119059730	SOCKET HEAD BOLT M5X20	O	2	*			
027-3	266814-9	HEX SOCKET HEAD BOLT M5X20	O	2				
028	5233503902	INSULATOR GASKET		2	*			
028-1	424448-6	INSULATOR GASKET	O	2				
029	5233504001	CARBURETOR INSULATOR		1				
030	5233038001	INSULATOR COMPLETE		1				
031	5233504102	INSULATOR GASKET		1	*			
031-1	5233504103	INSULATOR GASKET	O	1				
032	0140059520	SCREW M5X25		2	*			
032-1	0140059500	SCREW M5X25	O	2	*			
032-2	266700-4	PAN HEAD SCREW M5X25	O	2				
033	6165501200	WIRE		1	*			
033-1	6165500201	WIRE	O	1	*			
033-2	638784-6	WIRE	O	1				
034	5233504302	MUFFLER GASKET		1				
035	5233504402	MUFFLER INSULATOR		1				

Please order the parts with part number.

Print Date 22/11/2023

Model No.RST250 STRING TRIMMER

Item	Parts No.	Description	I/C	Qty	New/Old	Opt. 1	Opt. 2	Note
036	5233037003	EXHAUST MUFFLER		1	*			
D10		INC. 111			*			
036-1	5253026001	EXHAUST MUFFLER	O	1				
D10		INC. 111						
037	0031005000	WASHER M5		2	*			
038	0119059650	SOCKET HEAD BOLT		2	*			
038-1	0119059600	SOCKET HEAD BOLT M5X45	O	2	*			
038-2	266697-7	SOCKET HEAD BOLT M5X45	O	2				
039	5237031010	FLYWHEEL		1	*			
039-1	5237031011	FLYWHEEL	O	1	*			
039-2	5257002010	FLYWHEEL	O	1				
040	5237031022	COIL		1	*			
040-1	5237031023	COIL	O	1	*			
040-2	5237031024	COIL	O	1				
041	0043304200	SCREW ASS'Y M4X20		2	*			
041-1	0140049920	SCREW ASS'Y M4X20	O	2				
042	5237503202	GROMMET		1	*			
042-1	424449-4	GROMMET	O	1				
043	0654009940	PLUG CAP SPRING		1	*			
043-1	0654009931	PLUG CAP SPRING	O	1	*			
043-2	324891-8	PLUG CAP SPRING	O	1				
044	5237503301	PLUG CAP		1				
045A_	0650149721	SPARK PLUG		1	*			
045A1	168662-1	SPARK PLUG(BMR7A)	O	1				
046	6162005002	CLUTCH ASS'Y		1	*			
046-1	168672-8	CLUTCH	O	1				
047	6162004002	CLUTCH DRUM COMPLETE		1				
048	5235020001	ENGINE COVER COMPLETE		1				
049	0031510000	OUTER SNAP RING 10		1	*			
049-1	961006-2	RETAINING RING S-10	O	1				
050	0140059510	SCREW M5X20		3	*			
050-1	0140059700	SCREW ASS'Y M5X20	O	3	*			
050-2	0140059360	SCREW & WASHER ASS'Y	O	3	*			
050-3	266788-4	PAN HEAD SCREW M5X20 WITH WR	O	3				
051	5215003002	PULLEY		1				
052	5235504700	BOLT ASS'Y		1	*			
052-1	266703-8	HEX. HEAD BOLT M6X14	O	1				
053	5235021000	REWIND STARTER		1	*			
053-1	5235019003	STARTER COVER COMPLETE	O	1	*			
D10		INC. 51			*			
D11		INC. 51,102-106			*			
053-2	5235019004	STARTER COVER COMPLETE	X	1				
D10		INC. 51,102-106						
054	5236504300	PUMP		1	*			
054-1	168398-2	PRIMER PUMP	O	1				

Please order the parts with part number.

Print Date 22/11/2023

Model No.RST250 STRING TRIMMER

Item	Parts No.	Description	I/C	Qty	New/Old	Opt. 1	Opt. 2	Note
055	0043605180	SCREW ASS'Y M5X18		4	*			
055-1	0140059450	SCREW M5X18	O	4	*			
055-2	0140059350	SCREW ASS'Y M5X18(W,SW)	O	4	*			
055-3	266699-3	PAN HEAD SCREW M5X18	O	4				
056	5236504101	FUEL TANK		1	*			
056-1	455630-6	FUEL TANK	O	1				
057A_	5316011000	FUEL TANK CAP ASS'Y		1	*			
057A1	5316014000	FUEL TANK CAP COMPLETE	O	1	*			
057A2	5256058000	FUEL TANK CAP	S	1	*			
057A3	452920-8	FUEL TANK CAP	O	1				
058	5236048001	TUBE		1	*			
058-1	5236048002	TUBE	O	1	*			
058-2	5236048003	TUBE	O	1				
059	5236503900	FILTER		1	*			
059-1	163447-0	FUEL FILTER	O	1	*			
059-2	163447-0	FUEL FILTER	O	1				
060	5036500300	PLATE		1	*			
060-1	424103-0	PLATE	O	1				
061	5036500200	PLATE		1	*			
061-1	424102-2	PLATE	O	1				
062	5216500200	DAMPER		2	*			
062-1	424446-0	DAMPER	O	2				
063	0043605300	SCREW ASS'Y		2	*			
063-1	911253-5	PAN HEAD SCREW M5X30	O	2				
064	0022705000	NUT M5		2	*			
064-1	264093-3	HEX. NUT M5	O	2	*			
064-2	931202-6	HEX. NUT M5	O	2				
065	0150059950	TAPPING SCREW M5X8		1				
066	5235504600	TAPPING SCREW		1	*			
066-1	0150059800	TAPPING SCREW M5X18	O	1				
067	5236047003	CARBURETOR		1	*			
067-1	5236047004	CARBURETOR	O	1	*			
D10		INC. 87-100			*			
067-2	5236057000	CARBURETOR	O	1				
D10		INC. 87,89,91-100						
068	5236504601	TUBE 3X5X140		1	*			
068-1	0851149960	TUBE 2.5X5X140	O	1				
069	5233504602	AIR CLEANER CASE		1				
070	5233504700	AIR CLEANER ELEMENT		1	*			
070-1	443167-5	AIR CLEANER ELEMENT	O	1				
071	0043605650	SCREW ASS'Y M5X65		2	*			
071-1	0140059470	SCREW M5X62	O	2	*			
071-2	265666-5	PAN HEAD SCREW M5X62	O	2				
072	5233504502	CLEANER PLATE		1	*			
072-1	5233048001	CLEANER PLATE	X	1				

Please order the parts with part number.

Print Date 22/11/2023

Model No.RST250 STRING TRIMMER

Item	Parts No.	Description	I/C	Qty	New/Old	Opt. 1	Opt. 2	Note
073	5233504200	CARBURETOR GASKET		1				
074	5233504801	CHOKE LEVER		1				
075	5233505002	CHOKE PLATE		1				
076	0031104000	WASHER		1				
077	0150049980	TAPPING SCREW M4X8		1				
078	5232502402	STUD		1	*			
078-1	0105064970	STUD	O	1	*			
078-2	266696-9	STUD BOLT M6X30	O	1	*			
079	6163002021	CUTTER SHAFT		1	*			
079-1	6163003020	CUTTER SHAFT	X	1				
080	6163002041	METAL BUSH		1	*			
080-1	6163002031	BALL BEARING 608LLU	X	1	*			
080-2	211367-3	BALL BEARING 608DDW	O	1				
081	6163002031	BALL BEARING 608LLU		1	*			
081-1	211367-3	BALL BEARING 608DDW	O	1				
082	6163002051	WASHER		1				
083	6163002061	SPRING WASHER		1				
084	6168500800	RECEIVE WASHER		1				
085	6163002121	BOLT ASS'Y		1				
086	0040151000	SCREW		1	*			
086-1	0043105100	PAN HEAD SCREW M5X10	O	1	*			
086-2	0017005100	CROSS RECESS HEAD BOLT	O	1				
087	5236018040	SWIVEL		1	*			
087-1	325922-6	SWIVEL	O	1				
088	5206008110	PLUG		1	*			
089	5206008030	PAN HEAD SCREW		2	*			
089-1	266581-6	PAN HEAD SCREW M3X8 WITH W	O	2	*			
089-2	WJ00096364	SCREW M3X8 WITH WASHER	O	2				
090	5236047022	THROTTLE VALVE ASS'Y		1	*			
091	5316005120	RING		1	*			
091-1	257964-1	STOP RING E-3	O	1				
092	5246001010	O RING		1	*			
092-1	213538-8	O RING 2	O	1				
093	5236029010	JET		1	*			
093-1	5036002010	JET	X	1	*			
093-2	5236057010	JET	S	1				
094	5246001030	PUMP GASKET		1	*			
094-1	442172-9	PUMP GASKET	O	1				
095	5246001040	PUMP DIAPHRAGM		1	*			
095-1	168575-6	PUMP DIAPHRAGM	O	1	*			
095-2	WJ00009599	PUMP DIAPHRAGM	O	1				
096	5016004010	INLET SCREEN		1	*			
096-1	352010-6	INLET SCREEN	O	1	*			
096-2	WJ00014070	INLET SCREEN	O	1				
097	5016004130	GASKET		1	*			

Please order the parts with part number.

Print Date 22/11/2023

Model No.RST250 STRING TRIMMER

Item	Parts No.	Description	I/C	Qty	New/Old	Opt. 1	Opt. 2	Note
097-1	442183-4	METERING DIAPHRAGM GASKET	O	1				
098	5316005250	METERING DIAPHRAGM ASS'Y		1	*			
098-1	168767-7	METALING DIAPHRAGM	O	1				
099	5316005030	PRIMER PUMP COVER		1	*			
099-1	346608-9	METER DIAPHRAGM COVER	O	1	*			
099-2	WJ00021158	METERING DIAPHRAGM COVER	O	1				
100	5216002020	PAN HEAD SCREW		4	*			
100-1	266770-3	SCREW	O	4	*			
100-2	WJ00096325	SCREW	O	4				
101	5219500000	HOLDER		1				
102	5215002020	REEL		1				
103	5215002030	SPIRAL SPRING		1	*			
103-1	232258-5	SPIRAL SPRING	O	1				
104	5215002060	STARTER ROPE		1				
105	5225004020	HANDLE		1	*			
105-1	424319-7	STARTER KNOB	O	1				
106	5425003010	SET SCREW		1	*			
106-1	266580-8	TAPPING SCREW 5X10	O	1				
107	0440129970	OIL SEAL		1	*			
107-1	213628-7	OIL SEAL	O	1				
108	0440129970	OIL SEAL		1	*			
108-1	213628-7	OIL SEAL	O	1				
109	6163003041	SPACER		1				
111	5233506600	SPARK ARRESTER		1	*			
111-1	5253033010	SPARK ARRESTER	O	1	*			
111-2	352016-4	SPARK ARRESTER	O	1				
112	6161500901	SPAECER		1	*			
113	0150059940	TAPPING SCREW		1	*			
114	6255021001	STRAP UNIT		1	*			
114-1	6255021002	STRAP UNIT	O	1	*			
114-2	5256067000	STRAP	S	1	*			
114-3	140436-2	STRAP COMPLETE	O	1				
115	0610089990	NEEDLE ROLLER BEARING	S	1				
A01-1	5019001000	TOOL		1				
A02	B-02668	NYLON CUTTING HEAD 4X (R.H)		1				

Please order the parts with part number.

Print Date 22/11/2023