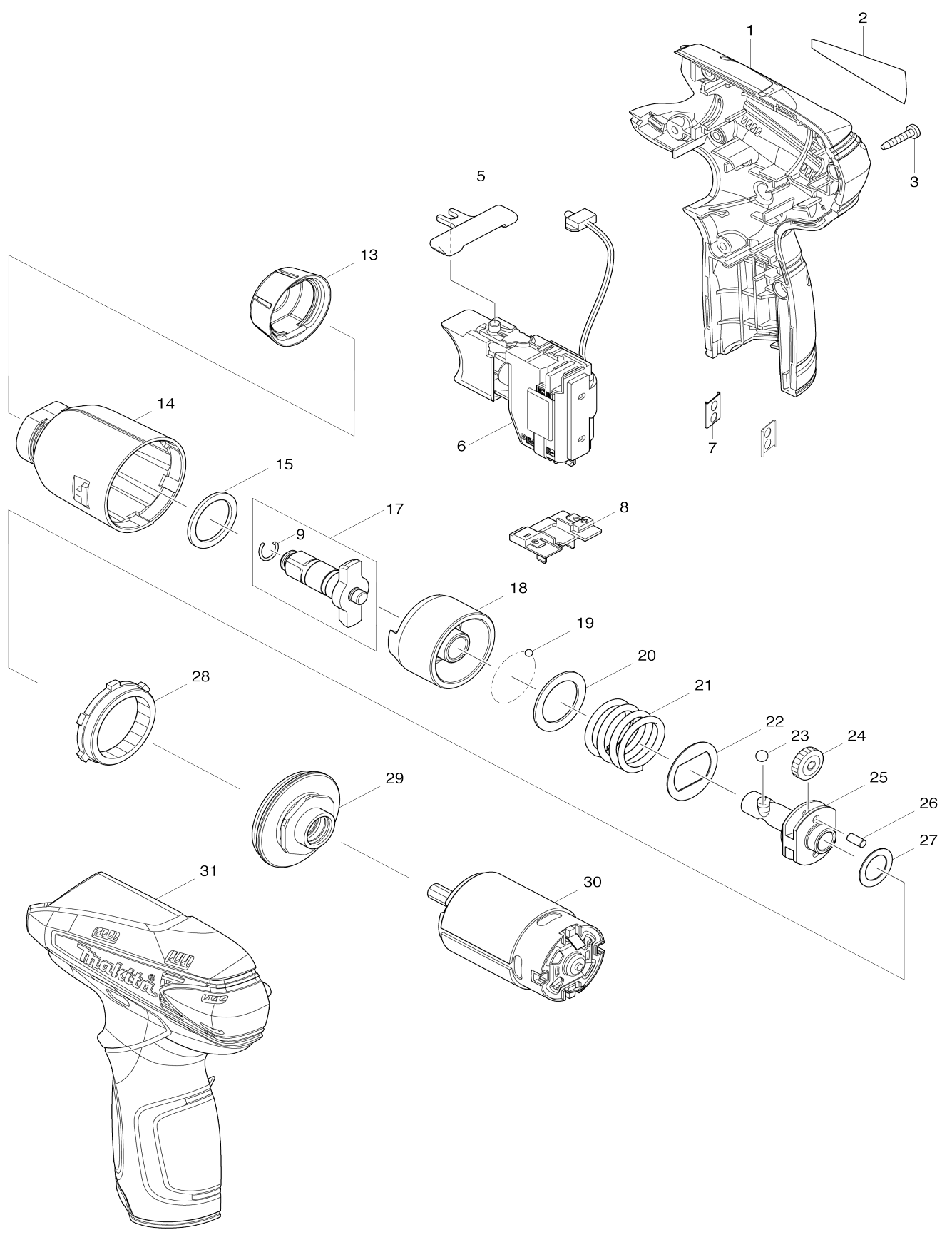


Model No.TW100D CORDLESS IMPACT WRENCH



Model No.TW100D CORDLESS IMPACT WRENCH

Item No.	Parts No.	Description	Interchangability	Q'ty	New/Old	Note1	Note2
001	188497-4	HOUSING SET		1	*		
D10		INC. 31					
001-1	187170-3	HOUSING SET	S	1	*		
D10		INC. 31					
001-2	187347-0	HOUSING SET	>	1			
D10		INC. 31					
002	869482-3	TW100D NAME PLATE		1			
003	266429-2	TAPPING SCREW 3X16		6			
005	450504-6	F/R CHANGE LEVER		1			
006	650656-5	SWITCH C3HY-1A-EF1M		1	*		
006-1	650691-3	SWITCH C3HW-3A-EF1M	<	1			
007	345998-7	SET PLATE		2			
008	643830-2	TERMINAL		1			
009	231964-9	RING SPRING 7		1			
013	424428-2	BUMPER		1			
014	140929-9	HAMMER CASE COMPLETE		1			
015	261140-1	NYLON WASHER 20		1			
017	135473-9	ANVIL ASSEMBLY		1			
D10		INC. 9					
018	324894-2	HAMMER		1			
019	216019-1	STEEL BALL 3		24			
020	267380-9	FLAT WASHER 20		1			
021	234217-5	COMPRESSION SPRING 21		1			
022	267813-4	WASHER 21		1			
023	216002-8	STEEL BALL 4.8		2			
024	227213-0	SPUR GEAR 17		2			
025	324897-6	SPINDLE		1			
026	268217-3	PIN 3.5		2			
027	253052-2	FLAT WASHER 12		1			
028	227215-6	INTERNAL GEAR 43		1			
029	158671-8	BEARING BOX COMPLETE		1			
C10	210112-3	BALL BEARING 6801LLB		1	*		
C11	210242-0	BALL BEARING 6801LLB	O	1			
C20	213188-9	O-RING 13		1			
030	629904-3	DC MOTOR		1			
031	188497-4	HOUSING SET		1	*		
D10		INC. 1					
031-1	187170-3	HOUSING SET	S	1	*		
D10		INC. 1					
031-2	187347-0	HOUSING SET	>	1			
D10		INC. 1					
032	268284-8	PIN 1.5	S	1			
033	263038-8	RUBBER PIN 6	S	1			
034	533020-4	LEAD ASS'Y		1	*		
034-1	533031-9	LEAD ASS'Y	O	1			
035	533019-9	LEAD ASS'Y		1	*		
035-1	533030-1	LEAD ASS'Y	O	1			

A01	***DC10WA	DC10WA BATTERY CHARGER		1			
A02	194550-6	BATTERY BL1013 SET		2	*		
A02-1	196066-7	BATTERY BL1013 SET	O	2			
A03	141104-0	PLASTIC CARRYING CASE COMPLETE		1			
C10	324679-6	SHAFT		1			
C20	417724-5	LATCH		2			
E01	638929-6	LINE FILTER UNIT		1			
C10	654086-2	RECEPTACLE		2			
F01-1	196066-7	BATTERY BL1013 SET	O	1			
A03	824781-0	PLASTIC CASE		1			
A04	821549-5	CONNECTOR PLASTIC CASE (TYPE1)		1	*		
C10	453974-8	LATCH		4	*		
A04-1	821549-5	CONNECTOR PLASTIC CASE (TYPE1)	<	1			
C10	453974-8	LATCH		4			
A05	837663-7	INNER TRAY		1	*		
A05-1	837866-3	INNER TRAY	<	1			
A06	800Y82-0	TW100DWJ INDICATION LABEL		1			
A07	800Y83-8	TW100DWJ PLASTIC CASE LABEL		2			

Please state Parts No. when your order.

Print Date 10/25/2023