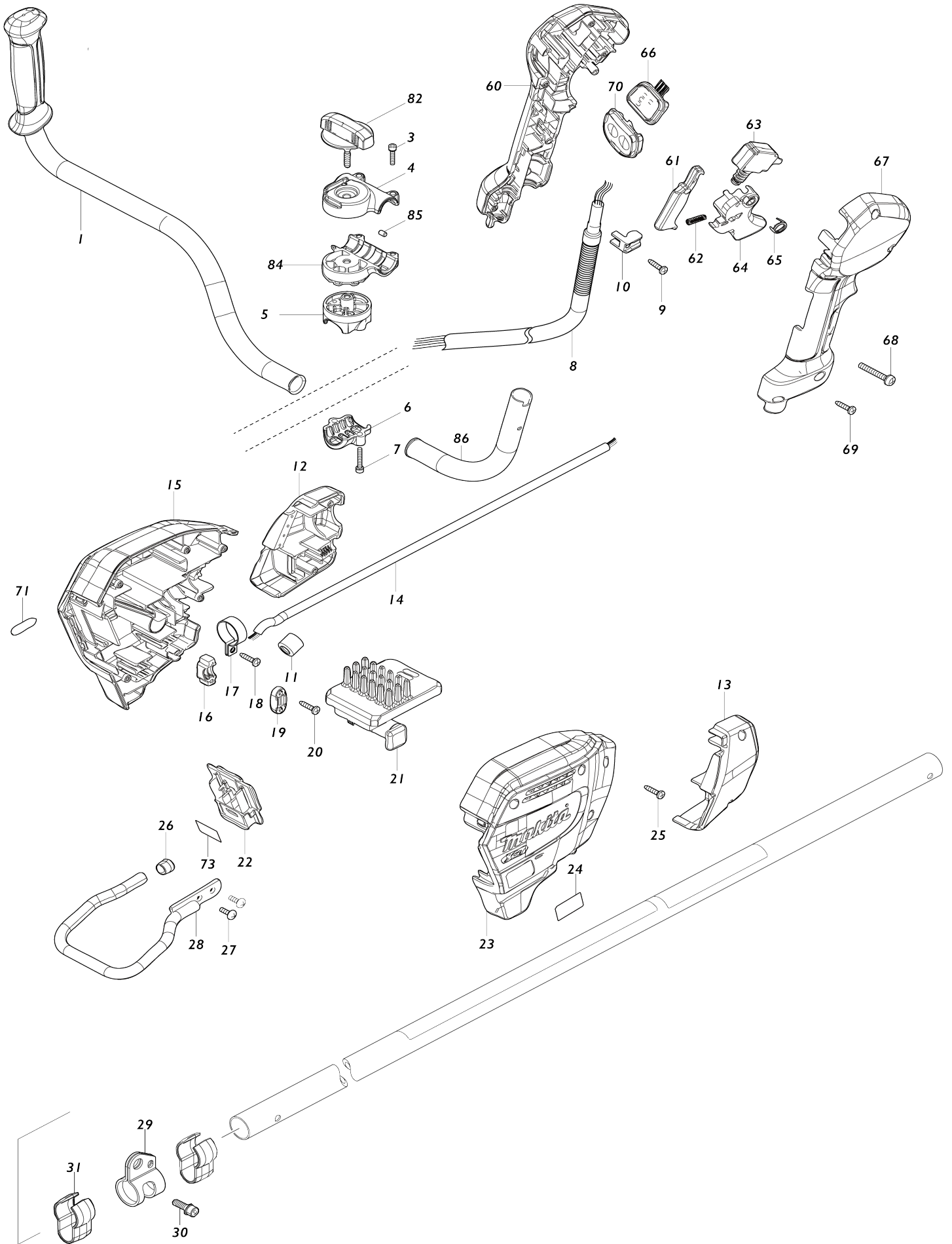
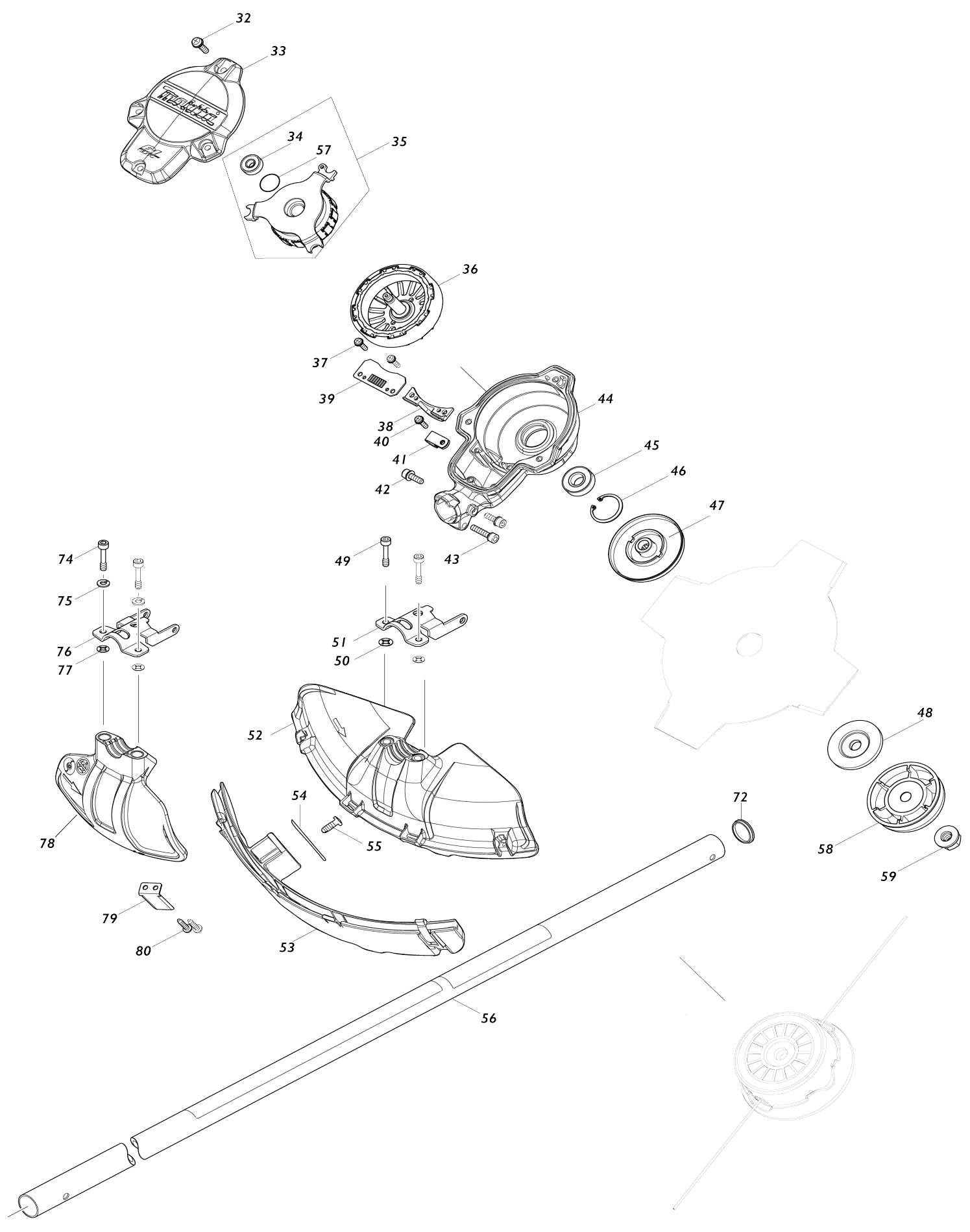


Model No.UR002G CORDLESS GRASS TRIMMER



Model No.UR002G CORDLESS GRASS TRIMMER



Model No.UR002G CORDLESS GRASS TRIMMER

Item No.	Parts No.	Description	Interchangeability	Q'ty	New/Old	Note1	Note2
F01	199140-0	GUIDE RAIL 1000 SET		1			
F02	199141-8	GUIDE RAIL 1500 SET		1			
F03	194368-5	GUIDE RAIL 1400 SET		1			
F04	194925-9	GUIDE RAIL 1900 SET		1			
F05	194367-7	GUIDE RAIL 3000 SET		1			
F06	194416-0	SHEET 10000 SET		1			
F07	194417-8	RUBBER SHEET 10000 SET		1			
F08	194418-6	POSITION SHEET 1400 SET		1			
F09	194910-2	POSITION SHEET 1900 SET		1			
001	140L83-1	HANDLE 19 COMPLETE		1	*		
001-1	141E67-0	HANDLE 19 L COMPLETE	<	1			
003	922241-7	HEX. SOCKET HEAD BOLT M5X25		4	*		
003-1	922241-7	HEX. SOCKET HEAD BOLT M5X25	<	2			
004	318272-6	HANDLE HOLDER 1		1	*		
004-1	141D69-0	UPPER HANDLE HOLDER19 COMPLETE	<	1			
005	318273-4	HANDLE HOLDER 2		1	*		
005-1	312B65-5	UPPER PIPE HOLDER 24	<	1			
006	318274-2	HANDLE HOLDER 3		1	*		
006-1	312B66-3	LOWER PIPE HOLDER 24	<	1			
007	922241-7	HEX. SOCKET HEAD BOLT M5X25		2	*		
007-1	922251-4	HEX. SOCKET HEAD BOLT M5X30	<	2			
008	699132-4	POWER SUPPLY CORD UNIT		1	*		
008-1	699172-2	POWER SUPPLY CORD UNIT	<	1			
C10	688163-8	LINE FILTER		1			
009	266326-2	TAPPING SCREW 4X18		1			
010	687260-7	STRAIN RELIEF		1			
011	688163-8	LINE FILTER		1			
012	183S35-1	HOUSING COVER SET		1			
D10		INC. 13					
013	183S35-1	HOUSING COVER SET		1			
D10		INC. 12					
014	699159-4	POWER SUPPLY CORD UNIT		1			
015	183S34-3	HOUSING SET		1			
C10	263005-3	RUBBER PIN 6		2			
D10		INC. 23					
016	687051-6	STRAIN RELIEF		1			
017	346248-3	CLAMP 24		1			
018	266326-2	TAPPING SCREW 4X18		1			
019	687124-5	STRAIN RELIEF		1			
020	266326-2	TAPPING SCREW 4X18		2			
021	620E46-6	CONTROLLER		1	*		
021-1	620J65-2	CONTROLLER	S	1			
022	632P49-4	TERMINAL UNIT		1			
023	183S34-3	HOUSING SET		1			
C10	263005-3	RUBBER PIN 6		2			
D10		INC. 15					
024	811A45-7	UR002G NAME PLATE		1			

025	266326-2	TAPPING SCREW 4X18		7		
026	422230-7	CAP		1		
027	266420-0	TAPPING SCREW 5X20		2		
028	347752-5	BATTERY GUARD		1		
029	347116-3	HANGER		1		
030	922212-4	HEX. SOCKET HEAD BOLT M5X12		1		
031	457458-8	CLAMP		2		
032	911233-1	PAN HEAD SCREW M5X20		4		
033	413335-4	TOP COVER		1		
034	210062-2	BALL BEARING 607ZZ		1		
035	529146-8	STATOR ASS'Y		1	*	
D10		INC. 34,57				
035-1	520136-4	STATOR ASS'Y	S	1		
D10		INC. 34,57				
036	619462-7	ROTOR		1		
037	911128-8	P.H.SCREW M4X16 WITH WR		2		
038	455628-3	INNER COVER		1		
039	620E48-2	CONTROLLER B		1		
040	911128-8	P.H.SCREW M4X16 WITH WR		1		
041	687042-7	STRAIN RELIEF		1		
042	922223-9	H.S.H.BOLT M5X16 WITH WR		2		
043	922241-7	HEX. SOCKET HEAD BOLT M5X25		1		
044	141A05-8	MOTOR HOUSING COMPLETE		1		
045	211131-2	BALL BEARING 6001DDW		1		
046	962106-1	RETAINING RING R-28		1		
047	140L84-9	RECEIVE WASHER COMPLETE G		1		
048	346084-7	CLAMP WASHER		1		
049	266896-1	HEX. SOCKET HEAD BOLT M5X20		2		
050	261156-6	POLYPROPYLENE WASHER 4		2		
051	346785-7	PROTECTOR CLAMP		1		
052	413336-2	PROTECTOR		1		
053	141A09-0	PROTECTOR U EXT. 350 COMPLETE		1		
054	347115-5	CUTTER		1		
055	266388-0	TAPPING SCREW 5X16		1		
056	141B05-4	PIPE COMPLETE O		1		
C10	819312-8	MAKITA LOGO LABEL		1		
C20	819J22-7	CAUTION LABEL		1		
057	213325-5	O RING 19		1		
058	168526-9	CUP		1		
059	264025-0	HEX. NUT M10-17		1		
060	183S64-4	GRIP SET		1		
C10	252180-0	HEX. LOCK NUT M5-8		1		
D10		INC. 67				
061	459146-3	LOCK OFF LEVER		1		
062	233101-1	COMPRESSION SPRING 4		1		
063	651492-2	SWITCH C3JR-1A-PAXD3		1		
064	459145-5	SWITCH LEVER		1		
065	233540-5	TORSION SPRING 11		1		
066	141B31-3	INDICATION CIRCUIT COMPLETE		1		
067	183S64-4	GRIP SET		1		
C10	252180-0	HEX. LOCK NUT M5-8		1		

D10		INC. 60				
068	911258-5	PAN HEAD SCREW M5X35		1		
069	266326-2	TAPPING SCREW 4X18		5		
070	140W06-5	SWITCH CIRCUIT COMPLETE G		1		
C10	819J26-9	SWITCH LABEL		1		
071	8012U4-2	XGT LOGO LABEL		1		
072	422727-6	RUBBER CAP 24		1		
073	811A49-9	UR002G SERIAL NO. LABEL		1		
081	213960-9	O RING 5		1		
082	162965-5	KNOB 57		1		
083	253047-5	FLAT WASHER 6		1		
084	312B85-9	LOWER HANDLE HOLDER 19		1		
085	263005-3	RUBBER PIN 6		2		
086	327861-6	HANDLE 19 R		1		
A01	122906-3	BAND ASSY		1		
A02	198893-8	CUTTER ASSEMBLY 95-M10L SET ME		1		
A03	783013-3	BOX DRIVER 16-17		1		
A04	783202-0	HEX. WRENCH 4		1		
A05	831304-7	ACCESSORY BAG		1		
A06	456924-2	TOOL COVER		1		
A08	195150-5	CUTTER BLADE SET		1		
A09	126642-3	PLASTIC BLADE ASSEMBLY255-M 10L		1		
E01	8030T4-9	SOUND XXDB LABEL		1	*	
E01-1	807E85-5	SOUND 92DB LABEL	<	1		
F09	197472-9	NYLON CORD 2.0-15M SET		1		
F10	197473-7	NYLON CORD 2.0-30M SET		1		
F11	197474-5	NYLON CORD 2.0-160M SET		1		
F12	197475-3	NYLON CORD 2.0-280M SET		1		
F17	198502-9	NYLON CORD 2.4-30M SET		1		
F18	198503-7	NYLON CORD 2.4-120M SET		1		
F19	198504-5	NYLON CORD 2.4-180M SET		1		

Please state Parts No. when your order.

Print Date 03/01/2024