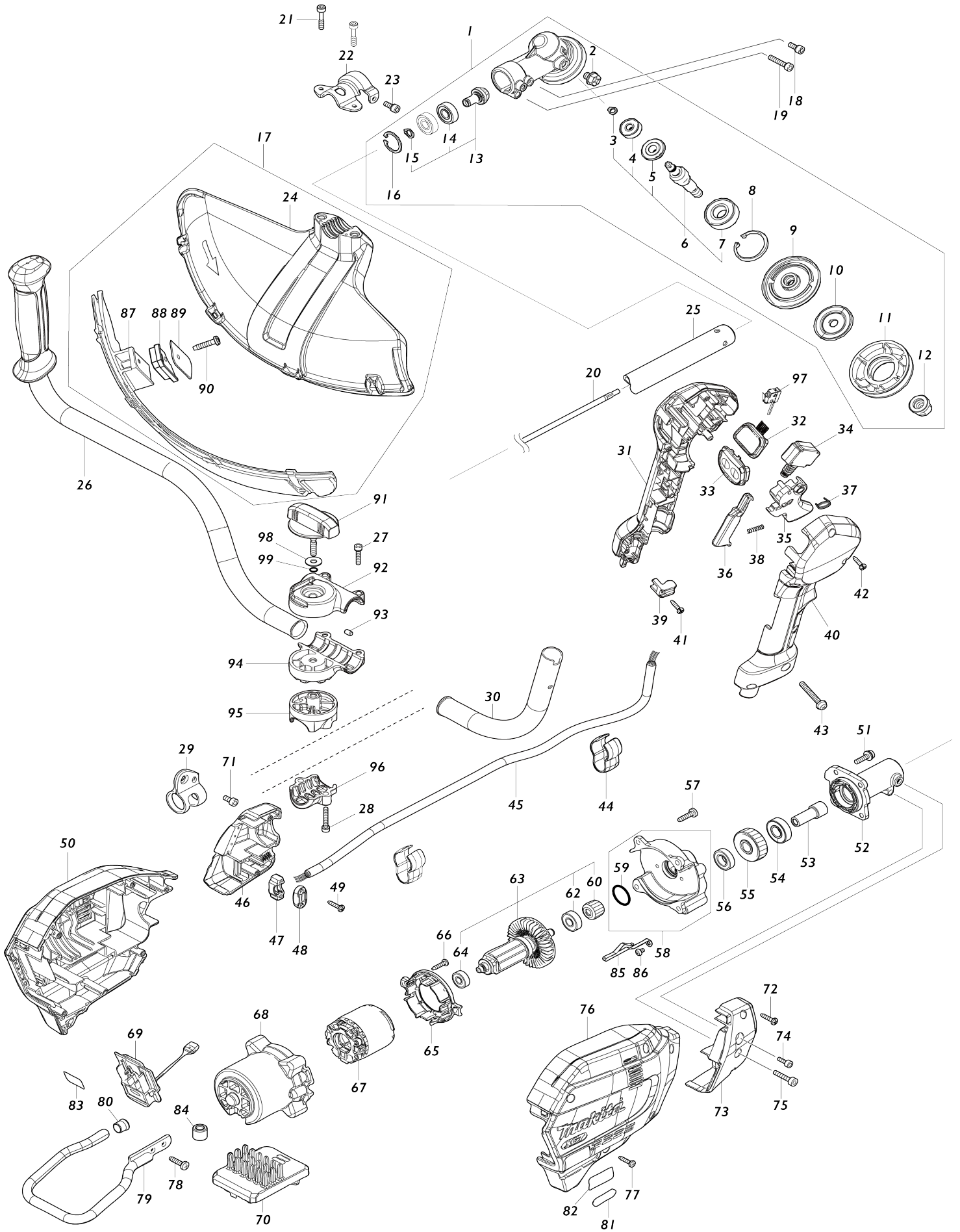


Model No.UR006G CORDLESS GRASS TRIMMER



Model No.UR006G CORDLESS GRASS TRIMMER

Item No.	Parts No.	Description	Interchangability	Q'ty	New/Old	Note1	Note2
F01	199140-0	GUIDE RAIL 1000 SET		1			
F02	199141-8	GUIDE RAIL 1500 SET		1			
F03	194368-5	GUIDE RAIL 1400 SET		1			
F04	194925-9	GUIDE RAIL 1900 SET		1			
F05	194367-7	GUIDE RAIL 3000 SET		1			
F06	194416-0	SHEET 10000 SET		1			
F07	194417-8	RUBBER SHEET 10000 SET		1			
F08	194418-6	POSITION SHEET 1400 SET		1			
F09	194910-2	POSITION SHEET 1900 SET		1			
001	123853-1	GEAR CASE ASSEMBLY		1			
D10		INC. 2,6,8-13,16					
002	265590-2	+HEX.BOLT M8X10 WITH R		1			
003	232350-7	RING SPRING 6		1			
004	210030-5	BALL BEARING 627ZZ		1			
005	221484-1	SPIRAL BEVEL GEAR 19		1			
006	136233-2	CUTTER SHAFT ASS'Y		1			
D10		INC. 3-5,7					
007	211228-7	BALL BEARING 6202DDW		1			
008	257432-4	RETAINING RING R-35		1			
009	144312-2	RECEIVE WASHER COMPLETE		1			
010	347104-0	CLAMP WASHER		1			
011	457274-8	CUP US		1			
012	252236-9	HEX. LOCK NUT M10-17		1			
013	136235-8	SPIRAL BEVEL GEAR ASS'Y		1			
D10		INC. 14,15					
014	210049-4	BALL BEARING 609ZZ		2			
015	257986-1	RETAINING RING (EXT) S-9		1			
016	257987-9	RETAINING RING (INT)R-24		1			
017	191B54-1	PROTECTOR U 430 SET MG		1			
D10		INC. 24,87-90					
018	922216-6	H.S.H.BOLT M5X14 WITH W		1			
019	922242-5	HEX. SOCKET HEAD BOLT M5X25		1			
020	327056-1	SHAFT		1			
021	251513-6	H.S.H.BOLT M5X25		2			
022	347107-4	PROTECTOR CLAMP 24		1			
023	922216-6	H.S.H.BOLT M5X14 WITH W		1			
024	457271-4	PROTECTOR U 450		1			
025	140S82-5	SHAFT PIPE COMPLETE I		1			
C10	819312-8	MAKITA LOGO LABEL		1			
C20	819J22-7	CAUTION LABEL		1			
026	141D27-6	HANDLE 22L COMPLETE		1			
C10	273014-4	GRIP 36		1			
027	922241-7	HEX. SOCKET HEAD BOLT M5X25		2			
028	922251-4	HEX. SOCKET HEAD BOLT M5X30		2			
029	347116-3	HANGER		1			
030	327837-3	HANDLE 22 R		1			
031	183T68-2	GRIP SET		1			

C10	252180-0	HEX. LOCK NUT M5-8		1		
D10		INC. 40				
032	141D25-0	INDICATION CIRCUIT COMPLETE E		1		
033	140W06-5	SWITCH CIRCUIT COMPLETE G		1		
C10	819J26-9	SWITCH LABEL		1		
034	651492-2	SWITCH C3JR-1A-PAXD3		1		
035	459145-5	SWITCH LEVER		1		
036	459146-3	LOCK OFF LEVER		1		
037	233540-5	TORSION SPRING 11		1		
038	233101-1	COMPRESSION SPRING 4		1		
039	687260-7	STRAIN RELIEF		1		
040	183T68-2	GRIP SET		1		
C10	252180-0	HEX. LOCK NUT M5-8		1		
D10		INC. 31				
041	266326-2	TAPPING SCREW 4X18		1		
042	266326-2	TAPPING SCREW 4X18		5		
043	911258-5	PAN HEAD SCREW M5X35		1		
044	457458-8	CLAMP		2		
045	699165-9	POWER SUPPLY CORD UNIT		1		
046	183N25-4	HOUSING COVER SET		1		
D10		INC. 73				
047	687051-6	STRAIN RELIEF		1		
048	687124-5	STRAIN RELIEF		1		
049	266326-2	TAPPING SCREW 4X18		2		
050	183S87-2	HOUSING SET		1		
C10	263005-3	RUBBER PIN 6		2		
D10		INC. 76				
051	911233-1	PAN HEAD SCREW M5X20		4		
052	140Y38-4	PIPE BRACKET COMPLETE		1		
C10	263002-9	RUBBER PIN 4		1		
053	325811-5	SPINDLE HUB		1		
054	211131-2	BALL BEARING 6001DDW		1		
055	227848-7	HELICAL GEAR 33		1		
056	211150-8	BALL BEARING 6901ZZ		1		
057	266420-0	TAPPING SCREW 5X20		4		
058	136368-9	GEAR BOX ASSY		1		
D10		INC. 59				
059	213961-7	O RING 22		1		
060	227834-8	HELICAL GEAR 16		1		
062	210005-4	BALL BEARING 608DDW		1		
063	519647-4	ROTOR ASSY		1		
D10		INC. 60,62,64				
064	210062-2	BALL BEARING 607ZZ		1		
065	459764-7	BAFFLE PLATE		1		
066	266326-2	TAPPING SCREW 4X18		2		
067	629A25-7	STATOR		1		
068	412961-6	MOTOR HOUSING		1		
069	632P49-4	TERMINAL UNIT		1		
070	620F24-2	CONTROLLER		1		
071	922212-4	HEX. SOCKET HEAD BOLT M5X12		1		
072	266326-2	TAPPING SCREW 4X18		2		

073	183N25-4	HOUSING COVER SET		1		
D10		INC. 46				
074	922211-6	H.S.H.BOLT M5X12 WITH W		1	*	
074-1	922216-6	H.S.H.BOLT M5X14 WITH W	O	1		
075	922233-6	H.S.H.BOLT M5X20 WITH WR		1		
076	183S87-2	HOUSING SET		1		
C10	263005-3	RUBBER PIN 6		2		
D10		INC. 50				
077	266326-2	TAPPING SCREW 4X18		6		
078	266420-0	TAPPING SCREW 5X20		2		
079	347752-5	BATTERY GUARD		1		
080	422230-7	CAP		1		
081	8025F3-0	XGT LOGO LABEL		1		
082	811X73-0	UR006G NAME PLATE		1		
083	811X79-8	UR006G SERIAL NO. LABEL		1		
084	688163-8	LINE FILTER		1		
085	347751-7	PLATE		1	*	
085-1	654886-0	EARTH PLATE	O	1		
086	911102-6	PAN HEAD SCREW M4X6		1		
087	144316-4	PROTECTOR U EXT. 420-450 COM P		1		
C10	346696-6	HOOK		2		
C20	232284-4	LEAF SPRING		2		
088	459765-5	CUTTER EXTENSION		1		
089	347115-5	CUTTER		1		
090	266459-3	TAPPING SCREW 5X25		1		
091	162965-5	KNOB 57		1		
092	141D24-2	UPPER HANDLE HOLDER 22 COM P		1		
C10	263005-3	RUBBER PIN 6		1		
093	263005-3	RUBBER PIN 6		2		
094	312B68-9	LOWER HANDLE HOLDER 22		1		
095	312B65-5	UPPER PIPE HOLDER 24		1		
096	312B66-3	LOWER PIPE HOLDER 24		1		
098	253047-5	FLAT WASHER 6		1		
099	213960-9	O RING 5		1		
A01	122A37-4	BAND ASSEMBLY		1		
A02	197993-1	TRIMMER HEAD 95-M10L SET ME		1		
C10	456640-6	SPOOL HOLDER		1		
C20	232289-4	COMPRESSION SPRING 15		1		
C30	144259-0	SPOOL COVER COMPLETE		1		
C40	456642-2	SPOOL		1		
A03	126642-3	PLASTIC BLADE ASSEMBLY255-M 10L		1		
A04	144392-8	TOOL COVER 2T		1		
A05	198345-9	CUTTER BLADE 255-2 SET ME		1		
A06	782238-6	BOX WRENCH 17		1		
A07	783202-0	HEX. WRENCH 4		1		
A08	831304-7	ACCESSORY BAG		1		
E01	807811-2	SOUND 96DB LABEL		1		
F14	1912L4-0	PROTECTOR 225 SET MG		1		
F17	197472-9	NYLON CORD 2.0-15M SET		1		

F18	197473-7	NYLON CORD 2.0-30M SET		1		
F19	197474-5	NYLON CORD 2.0-160M SET		1		
F20	197475-3	NYLON CORD 2.0-280M SET		1		
F26	199868-0	PLASTIC BLADE 305 SET MG		1		
F27	199870-3	PLASTIC BLADE 305 BLADE SET MG		1		
F28	198266-5	TRIMMER HEAD 110-M10L SET M E		1		
F34	198502-9	NYLON CORD 2.4-30M SET		1		
F35	198503-7	NYLON CORD 2.4-120M SET		1		
F36	198504-5	NYLON CORD 2.4-180M SET		1		
F39	199378-7	BAND ASSEMBLY SET		1		
F40	199450-5	GREASE VESSEL SET		1		
A02	191D90-9	TRIMMER HEAD 96-M10L SET		1		
D10		COMPO-PARTS				

Please state Parts No. when your order.

Print Date 03/01/2024