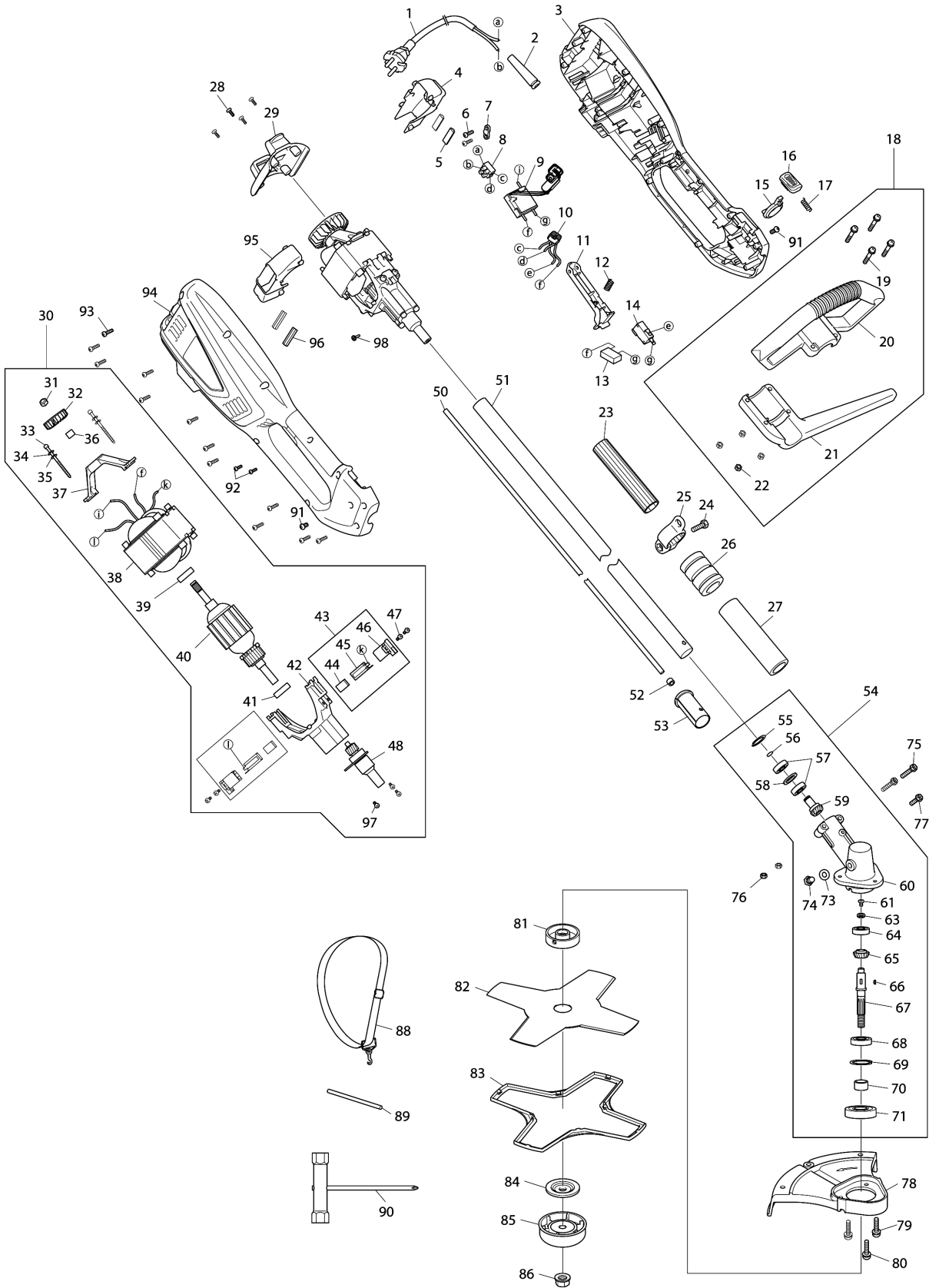


# Model No.UR2300 ELECTRIC GRASS TRIMMER



Model No.UR2300 ELECTRIC GRASS TRIMMER

| Item  | Parts No.  | Description                  | I/C | Qty | New/Old | Opt. 1 | Opt. 2 | Note |
|-------|------------|------------------------------|-----|-----|---------|--------|--------|------|
| 001   | YA00000497 | POWER CORD & PLUG            |     | 1   |         |        |        |      |
| 002   | YA00000516 | CORD PROTECTOR               |     | 1   |         |        |        |      |
| 003   | YA00000661 | HOUSING ASSEMBLY RED         |     | 1   | *       |        |        |      |
| D10   |            | INC. 94                      |     |     | *       |        |        |      |
| 003-1 | YA00000661 | HOUSING ASSEMBLY RED         | O   | 1   | *       |        |        |      |
| D10   |            | INC. 94                      |     |     | *       |        |        |      |
| 003-2 | YA00000660 | HOUSING ASSEMBLY BLUE        | X   | 1   |         |        |        |      |
| D10   |            | INC. 94                      |     |     |         |        |        |      |
| 004   | YA00000562 | FAN HOUSING L                |     | 1   | *       |        |        |      |
| 004-1 | YA00000562 | FAN HOUSING L                | O   | 1   |         |        |        |      |
| 005   | YA00000514 | RUBBER PAD                   |     | 2   |         |        |        |      |
| 006   | YA00000618 | TAPPING SCREW ST4X14         |     | 2   |         |        |        |      |
| 007   | YA00000547 | CABLE PRESS BOARD            |     | 1   |         |        |        |      |
| 008   | YA00000501 | TERMINAL SET                 |     | 2   | *       |        |        |      |
| 008-1 | YA00001306 | TERMINAL BLOCK 2P            | <   | 1   |         |        |        |      |
| 009   | YA00000619 | PCB CONTROL BOARD            |     | 1   |         |        |        |      |
| 010   | YA00000499 | INDUCTANCE                   |     | 1   | *       |        |        |      |
| 011   | YA00000554 | SWITCH TRIGGER               |     | 1   |         |        |        |      |
| 012   | YA00000513 | SPRING                       |     | 1   |         |        |        |      |
| 013   | YA00000498 | CAPACITOR                    |     | 1   | *       |        |        |      |
| 014   | YA00000555 | SWITCH                       |     | 1   | *       |        |        |      |
| 014-1 | YA00001315 | SWITCH                       | O   | 1   |         |        |        |      |
| 015   | YA00000539 | SPACING COLLAR               |     | 1   |         |        |        |      |
| 016   | YA00000525 | PUSH BUTTON                  |     | 1   |         |        |        |      |
| 017   | YA00000511 | COMPRESSION SPRING           |     | 1   |         |        |        |      |
| 018   | YA00000620 | AUXILIARY HANDLE ASSEMBLY    |     | 1   |         |        |        |      |
| D10   |            | INC. 19-22                   |     |     |         |        |        |      |
| 019   | YA00000621 | NYLOC SCREW                  |     | 4   | *       |        |        |      |
| 019-1 | YA00000621 | NYLOC SCREW                  | O   | 4   |         |        |        |      |
| 020   | YA00000564 | AUX.HANDLE COVER             |     | 1   |         |        |        |      |
| 021   | YA00000563 | AUX.HANDLE SUPPORT           |     | 1   |         |        |        |      |
| 022   | YA00000622 | HEX LOCK NUT M5              |     | 4   | *       |        |        |      |
| 022-1 | YA00000622 | HEX LOCK NUT M5              | O   | 4   |         |        |        |      |
| 023   | YA00000623 | THE INSULATING SHEATH        |     | 1   |         |        |        |      |
| 024   | YA00000624 | PAN HEAD SCREWS M6X20        |     | 1   | *       |        |        |      |
| 024-1 | YA00000624 | PAN HEAD SCREWS M6X20        | O   | 1   |         |        |        |      |
| 025   | YA00000541 | SHOULD BELT RING             |     | 1   |         |        |        |      |
| 026   | YA00000521 | RUBBER COVER                 |     | 1   |         |        |        |      |
| 027   | YA00000644 | HANDLE SHEATH                |     | 1   |         |        |        |      |
| 028   | YA00000625 | TAPPING SCREW ST4.2X10       |     | 4   | *       |        |        |      |
| 028-1 | YA00000625 | TAPPING SCREW ST4.2X10       | O   | 4   | *       |        |        |      |
| 028-2 | YA00000453 | T20 HEAD TAPPING SCREW ST4.2 | O   | 4   | *       |        |        |      |
| 028-3 | YA00000625 | TAPPING SCREW ST4.2X10       | O   | 4   |         |        |        |      |
| 029   | YA00000560 | REAR COVER                   |     | 1   |         |        |        |      |

Please order the parts with part number.

Print Date 30/1/2024

Model No.UR2300 ELECTRIC GRASS TRIMMER

| Item  | Parts No.  | Description                     | I/C | Qty | New/Old | Opt. 1 | Opt. 2 | Note |
|-------|------------|---------------------------------|-----|-----|---------|--------|--------|------|
| 030   | YA00000626 | MOTOR ASSEMBLY<br>230V/1000W    |     | 1   |         |        |        |      |
| D10   |            | INC. 31-42,44-48, 97            |     |     | *       |        |        |      |
| D11   |            | INC. 31-33,36-42,44-48,97       |     |     |         |        |        |      |
| 031   | YA00000627 | HEX LOCK NUT M6                 |     | 1   | *       |        |        |      |
| 031-1 | YA00000627 | HEX LOCK NUT M6                 | O   | 1   |         |        |        |      |
| 032   | YA00000507 | IMPELLER                        |     | 1   |         |        |        |      |
| 033   | YA00000538 | PAN HEAD SCREW M4X55<br>WITH WG |     | 2   | *       |        |        |      |
| 033-1 | YA00000538 | PAN HEAD SCREW M4X55<br>WITH WG | O   | 2   |         |        |        |      |
| 034   | YA00000523 | SPRING WASHER                   |     | 2   | *       |        |        |      |
| 035   | YA00000524 | FLAT WASHER                     |     | 2   | *       |        |        |      |
| 036   | YA00000531 | AXLE SLEEVE                     |     | 1   |         |        |        |      |
| 037   | YA00000526 | REAR BRACKET                    |     | 1   |         |        |        |      |
| 038   | YA00000505 | STATOR ASS'Y                    |     | 1   |         |        |        |      |
| 039   | YA00000431 | BALL BEARING 608ZZ              |     | 1   | *       |        |        |      |
| 039-1 | YA00000431 | BALL BEARING 608ZZ              | O   | 1   |         |        |        |      |
| 040   | YA00000628 | ROTOR ASSEMBLY                  |     | 1   |         |        |        |      |
| 041   | YA00000430 | BALL BEARING 6900RS             |     | 1   | *       |        |        |      |
| 041-1 | YA00000430 | BALL BEARING 6900RS             | O   | 1   | *       |        |        |      |
| 041-2 | YA00000430 | BALL BEARING 6900RS             | O   | 1   |         |        |        |      |
| 042   | YA00000629 | FRONT BRACKET ASSEMBLY          |     | 1   |         |        |        |      |
| 043   | YA00000489 | CARBON BRUSH ASS'Y<br>2PCS/SET  |     | 2   | *       |        |        |      |
| D10   |            | INC. 44-46                      |     |     | *       |        |        |      |
| 043-1 | YA00000489 | CARBON BRUSH ASS'Y<br>2PCS/SET  | O   | 2   | *       |        |        |      |
| D10   |            | INC. 44-46                      |     |     | *       |        |        |      |
| 043-2 | YA00000489 | CARBON BRUSH ASS'Y<br>2PCS/SET  | O   | 1   |         |        |        |      |
| D10   |            | INC. 44-46                      |     |     |         |        |        |      |
| 044   | YA00000504 | CARBON BRUSH                    |     | 1   | *       |        |        |      |
| 044-1 | YA00001194 | CARBON BRUSH 2PCS/SET           | S   | 1   |         |        |        |      |
| 045   | YA00000502 | COPPER BRUSH HOLDER             |     | 1   | *       |        |        |      |
| 045-1 | YA00000502 | COPPER BRUSH HOLDER             | O   | 2   |         |        |        |      |
| 046   | YA00000503 | BRUSH HOLDER BRACKET            |     | 1   | *       |        |        |      |
| 046-1 | YA00000503 | BRUSH HOLDER BRACKET            | O   | 2   |         |        |        |      |
| 047   | YA00000630 | PAN HEAD SCREW M4X12<br>WITH WR |     | 4   |         |        |        |      |
| 048   | YA00000483 | SHAFT ASS'Y                     |     | 1   |         |        |        |      |
| 050   | YA00000550 | FLEXIBLE SHAFT                  |     | 1   |         |        |        |      |
| 051   | YA00000481 | TUBE ASS'Y                      |     | 1   |         |        |        |      |
| 052   | YA00000528 | FLEXIBLE SHAFT CLIP             |     | 1   |         |        |        |      |
| 053   | YA00000553 | CONNECTOR                       |     | 1   |         |        |        |      |
| 054   | YA00000480 | GEAR BOX ASS'Y                  |     | 1   |         |        |        |      |
| D10   |            | INC. 55-61, 63-71, 73-74        |     |     |         |        |        |      |
| 055   | YA00000468 | RETAINING COLLAR                |     | 1   |         |        |        |      |
| 056   | YA00000434 | C SHAPE RETAINING COLLAR        |     | 1   |         |        |        |      |

Please order the parts with part number.

Print Date 30/1/2024

Model No.UR2300 ELECTRIC GRASS TRIMMER

| Item  | Parts No.  | Description                  | I/C | Qty | New/Old | Opt. 1 | Opt. 2 | Note |
|-------|------------|------------------------------|-----|-----|---------|--------|--------|------|
| 057   | YA00000471 | 6900 BEARING                 |     | 2   | *       |        |        |      |
| 057-1 | YA00000430 | BALL BEARING 6900RS          | O   | 2   | *       |        |        |      |
| 057-2 | YA00000430 | BALL BEARING 6900RS          | O   | 2   |         |        |        |      |
| 058   | YA00000440 | WASHER                       |     | 1   |         |        |        |      |
| 059   | YA00000442 | BEVEL GEAR 16                |     | 1   | *       |        |        |      |
| 059-1 | YA00000442 | BEVEL GEAR 16                | O   | 1   |         |        |        |      |
| 060   | YA00000548 | GEAR BOX                     |     | 1   |         |        |        |      |
| 061   | YA00000460 | FLAT HEAD SCREW M4X8         |     | 1   | *       |        |        |      |
| 061-1 | YA00000460 | FLAT HEAD SCREW M4X8         | O   | 1   |         |        |        |      |
| 063   | YA00000542 | WASHER                       |     | 1   |         |        |        |      |
| 064   | YA00000470 | BALL BEARING 629Z            |     | 1   | *       |        |        |      |
| 064-1 | YA00000470 | BALL BEARING 629Z            | O   | 1   |         |        |        |      |
| 065   | YA00000443 | BEVEL GEAR 20                |     | 1   | *       |        |        |      |
| 065-1 | YA00000443 | BEVEL GEAR 20                | O   | 1   |         |        |        |      |
| 066   | YA00000465 | WHITNEY KEY                  |     | 1   |         |        |        |      |
| 067   | YA00000552 | OUTPUT SHAFT                 |     | 1   |         |        |        |      |
| 068   | YA00000469 | BALL BEARING 6002-2RS        |     | 1   | *       |        |        |      |
| 068-1 | YA00000469 | BALL BEARING 6002-2RS        | O   | 1   |         |        |        |      |
| 069   | YA00000467 | JUMP RING                    |     | 1   |         |        |        |      |
| 070   | YA00000515 | AXLE SLEEVE                  |     | 1   |         |        |        |      |
| 071   | YA00000441 | OIL SEAL                     |     | 1   |         |        |        |      |
| 073   | YA00000533 | SEALING SHEET                |     | 1   |         |        |        |      |
| 074   | YA00000459 | HEX BOLT M8X10               |     | 1   | *       |        |        |      |
| 074-1 | YA00000459 | HEX BOLT M8X10               | O   | 1   |         |        |        |      |
| 075   | YA00000458 | HEX BOLT M5X30               |     | 2   | *       |        |        |      |
| 075-1 | YA00000458 | HEX BOLT M5X30               | O   | 2   |         |        |        |      |
| 076   | YA00000461 | HEX LOCK NUT M5              |     | 2   | *       |        |        |      |
| 076-1 | YA00000461 | HEX LOCK NUT M5              | O   | 2   | *       |        |        |      |
| 076-2 | YA00000622 | HEX LOCK NUT M5              | O   | 2   |         |        |        |      |
| 077   | YA00000446 | HEX BOLT M5X12               |     | 1   | *       |        |        |      |
| 077-1 | YA00000446 | HEX BOLT M5X12               | O   | 1   |         |        |        |      |
| 078   | YA00000543 | SMALL SAFETY GUARD           |     | 1   |         |        |        |      |
| 079   | YA00000631 | PAN HEAD SCREW M5X14 WITH WR |     | 2   | *       |        |        |      |
| 079-1 | YA00000631 | PAN HEAD SCREW M5X14 WITH WR | O   | 2   |         |        |        |      |
| 080   | YA00000632 | PAN HEAD SCREW M6X14 WITH WR |     | 1   | *       |        |        |      |
| 080-1 | YA00000632 | PAN HEAD SCREW M6X14 WITH WR | O   | 1   |         |        |        |      |
| 081   | YA00000540 | AXLE RING                    |     | 1   |         |        |        |      |
| 082   | YA00000662 | BLADE                        |     | 1   | *       |        |        |      |
| 082-1 | YA00000530 | BLADE                        | O   | 1   |         |        |        |      |
| 083   | YA00000520 | BLADE COVER                  |     | 1   | *       |        |        |      |
| 084   | 168526-9   | CUP                          |     | 1   | *       |        |        |      |
| 084-1 | 346084-7   | CLAMP WASHER                 | X   | 1   |         |        |        |      |
| 085   | 346084-7   | CLAMP WASHER                 |     | 1   | *       |        |        |      |
| 085-1 | 168526-9   | CUP                          | X   | 1   |         |        |        |      |

Please order the parts with part number.

Print Date 30/1/2024

Model No.UR2300 ELECTRIC GRASS TRIMMER

| Item  | Parts No.  | Description                       | I/C | Qty | New/Old | Opt. 1 | Opt. 2 | Note |
|-------|------------|-----------------------------------|-----|-----|---------|--------|--------|------|
| 086   | 264025-0   | HEX. NUT M10-17                   |     | 1   |         |        |        |      |
| 088   | YA00000639 | STRAP                             |     | 1   |         |        |        |      |
| 089   | YA00000473 | PIN 5X120                         |     | 1   | *       |        |        |      |
| 089-1 | YA00000473 | PIN 5X120                         | X   | 1   | *       |        |        |      |
| 090   | 783013-3   | BOX DRIVER 16-17                  |     | 1   | *       |        |        |      |
| 091   | YA00000640 | T20 PAN HEAD SCREW M5X10          |     | 2   | *       |        |        |      |
| 091-1 | YA00000640 | T20 PAN HEAD SCREW M5X10          | O   | 2   |         |        |        |      |
| 092   | YA00000641 | T10 HEAD TAPPING SCREW<br>ST3X10  |     | 2   | *       |        |        |      |
| 092-1 | YA00000641 | T10 HEAD TAPPING SCREW<br>ST3X10  | O   | 2   |         |        |        |      |
| 093   | YA00000656 | T20 HEAD TAPPING SCREW<br>ST4.2X1 |     | 12  | *       |        |        |      |
| 093-1 | YA00000656 | T20 HEAD TAPPING SCREW<br>ST4.2X1 | O   | 12  |         |        |        |      |
| 094   | YA00000661 | HOUSING ASSEMBLY RED              |     | 1   | *       |        |        |      |
| D10   |            | INC. 3                            |     |     | *       |        |        |      |
| 094-1 | YA00000661 | HOUSING ASSEMBLY RED              | O   | 1   | *       |        |        |      |
| D10   |            | INC. 3                            |     |     | *       |        |        |      |
| 094-2 | YA00000660 | HOUSING ASSEMBLY BLUE             | X   | 1   |         |        |        |      |
| D10   |            | INC. 3                            |     |     |         |        |        |      |
| 095   | YA00000561 | FAN HOUSING R                     |     | 1   | *       |        |        |      |
| 095-1 | YA00000561 | FAN HOUSING R                     | O   | 1   |         |        |        |      |
| 096   | YA00000514 | RUBBER PAD                        |     | 2   |         |        |        |      |
| 097   | YA00000455 | 3 IN 1 SCREW                      |     | 3   | *       |        |        |      |
| 097-1 | YA00000630 | PAN HEAD SCREW M4X12<br>WITH WR   | X   | 3   |         |        |        |      |
| 098   | YA00000657 | PAN HEAD SCREW M3X6               |     | 1   | *       |        |        |      |
| 098-1 | YA00000657 | PAN HEAD SCREW M3X6               | O   | 1   |         |        |        |      |
| A01   | 783013-3   | BOX DRIVER 16-17                  |     | 1   |         |        |        |      |
| A02   | YA00000473 | PIN 5X120                         |     | 1   |         |        |        |      |
| A03   | YA00000520 | BLADE COVER                       |     | 1   |         |        |        |      |

Please order the parts with part number.

Print Date 30/1/2024