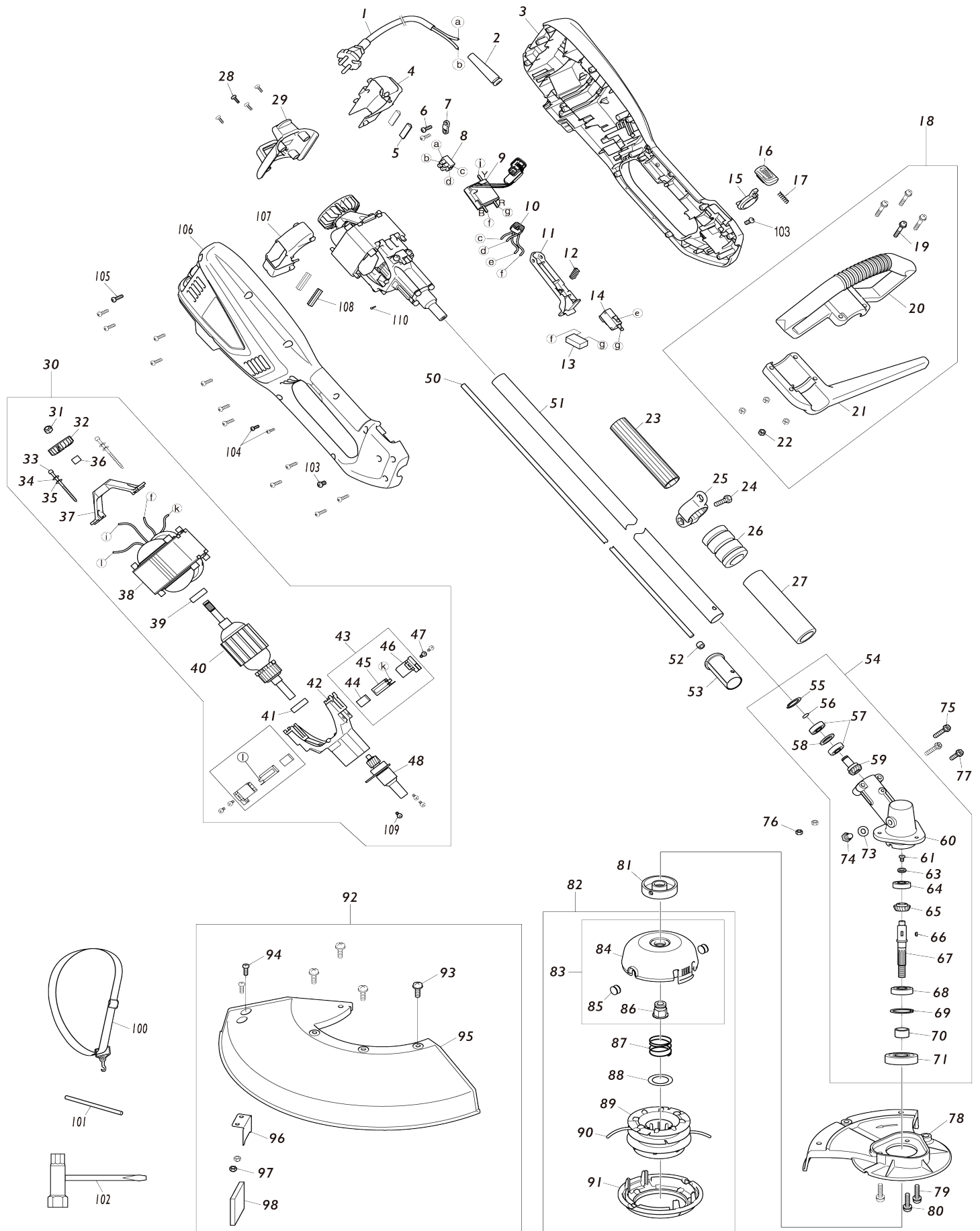


# Model No.UR3502 ELECTRIC GRASS TRIMMER



Model No.UR3502 ELECTRIC GRASS TRIMMER

Item No.	Parts No.	Description	Interchangability	Q'ty	New/Old	Note1	Note2
001	YA00000497	POWER CORD & PLUG		1			
002	YA00000516	CORD PROTECTOR		1			
003	YA00000660	HOUSING ASSEMBLY BLUE		1			
D10		INC. 106					
004	YA00000562	FAN HOUSING L		1			
005	YA00000514	RUBBER PAD		2			
006	YA00000618	TAPPING SCREW ST4X14		2			
007	YA00000547	CABLE PRESS BOARD		1			
008	YA00000501	TERMINAL SET		2	*		
008-1	YA00001306	TERMINAL BLOCK 2P	<	1			
009	YA00000619	PCB CONTROL BOARD		1			
010	YA00000499	INDUCTANCE		1	*		
011	YA00000554	SWITCH TRIGGER		1			
012	YA00000513	SPRING		1			
013	YA00000498	CAPACITOR		1	*		
013-1	YA00001307	CAPACITOR		1			
014	YA00000555	SWITCH		1	*		
014-1	YA00001315	SWITCH	O	1			
015	YA00000539	SPACING COLLAR		1			
016	YA00000525	PUSH BUTTON		1			
017	YA00000511	COMPRESSION SPRING		1			
018	YA00000620	AUXILIARY HANDLE ASSEMBLY		1			
D10		INC. 19-22					
019	YA00000621	NYLOC SCREW		4			
020	YA00000564	AUX.HANDLE COVER		1			
021	YA00000563	AUX.HANDLE SUPPORT		1			
022	YA00000622	HEX LOCK NUT M5		4			
023	YA00000623	THE INSULATING SHEATH		1			
024	YA00000624	PAN HEAD SCREWS M6X20		1			
025	YA00000541	SHOULD BELT RING		1			
026	YA00000521	RUBBER COVER		1			
027	YA00000519	FOAM GRIP		1			
028	YA00000625	TAPPING SCREW ST4.2X10		4	*		
028-1	YA00000453	T20 HEAD TAPPING SCREW ST4.2	O	4	*		
028-2	YA00000625	TAPPING SCREW ST4.2X10	O	4			
029	YA00000560	REAR COVER		1			
030	YA00000626	MOTOR ASSEMBLY 230V/1000W		1			
D10		INC. 31-42 44-48, 109					
D11		INC. 31-33,36-42,44-48,109					
031	YA00000627	HEX LOCK NUT M6		1			
032	YA00000507	IMPELLER		1			
033	YA00000538	PAN HEAD SCREW M4X55 WITH WG		2			
034	YA00000523	SPRING WASHER		2	*		
035	YA00000524	FLAT WASHER		2	*		
036	YA00000531	AXLE SLEEVE		1			
037	YA00000526	REAR BRACKET		1			
038	YA00000505	STATOR ASS'Y		1			

039	YA00000431	BALL BEARING 608ZZ		1	*		
039-1	YA00000431	BALL BEARING 608ZZ	O	1			
040	YA00000628	ROTOR ASSEMBLY		1			
041	YA00000430	BALL BEARING 6900RS		1	*		
041-1	YA00000430	BALL BEARING 6900RS	O	1			
042	YA00000629	FRONT BRACKET ASSEMBLY		1			
043	YA00000489	CARBON BRUSH ASS'Y 2PCS/SET		2	*		
D10		INC. 44-46					
043-1	YA00000489	CARBON BRUSH ASS'Y 2PCS/SET	O	1			
D10		INC. 44-46					
044	YA00000504	CARBON BRUSH		1	*		
044-1	YA00001194	CARBON BRUSH 2PCS/SET	S	1			
045	YA00000502	COPPER BRUSH HOLDER		1	*		
045-1	YA00000502	COPPER BRUSH HOLDER	O	2			
046	YA00000503	BRUSH HOLDER BRACKET		1	*		
046-1	YA00000503	BRUSH HOLDER BRACKET	O	2			
047	YA00000630	PAN HEAD SCREW M4X12 WITH WR		4			
048	YA00000483	SHAFT ASS'Y		1			
050	YA00000550	FLEXIBLE SHAFT		1			
051	YA00000481	TUBE ASS'Y		1			
052	YA00000528	FLEXIBLE SHAFT CLIP		1			
053	YA00000553	CONNECTOR		1			
054	YA00000480	GEAR BOX ASS'Y		1			
D10		INC. 55-61, 63-71, 73-74					
055	YA00000468	RETAINING COLLAR		1			
056	YA00000434	C SHAPE RETAINING COLLAR		1			
057	YA00000471	6900 BEARING		2	*		
057-1	YA00000430	BALL BEARING 6900RS	O	2	*		
057-2	YA00000430	BALL BEARING 6900RS	O	2			
058	YA00000440	WASHER		1			
059	YA00000442	BEVEL GEAR 16		1			
060	YA00000548	GEAR BOX		1			
061	YA00000460	FLAT HEAD SCREW M4X8		1			
063	YA00000542	WASHER		1			
064	YA00000470	BALL BEARING 629Z		1			
065	YA00000443	BEVEL GEAR 20		1			
066	YA00000465	WHITNEY KEY		1			
067	YA00000552	OUTPUT SHAFT		1			
068	YA00000469	BALL BEARING 6002-2RS		1			
069	YA00000467	JUMP RING		1			
070	YA00000515	AXLE SLEEVE		1			
071	YA00000441	OIL SEAL		1			
073	YA00000533	SEALING SHEET		1			
074	YA00000459	HEX BOLT M8X10		1			
075	YA00000458	HEX BOLT M5X30		2			
076	YA00000461	HEX LOCK NUT M5		2	*		
076-1	YA00000622	HEX LOCK NUT M5	O	2			
077	YA00000446	HEX BOLT M5X12		1			
078	YA00000546	SMALL SAFETY GUARD		1			
079	YA00000631	PAN HEAD SCREW M5X14 WITH WR		2			

080	YA00000632	PAN HEAD SCREW M6X14 WITH WR		1		
081	YA00000540	AXLE RING		1		
082	YA00000633	GRASS HEAD ASSEMBLY		1	*	
D10		INC. 84-91				
082-1	YA00000681	NYLON HEAD ASSEMBLY	<	1		
D10		INC. 84-91				
083	YA00000477	SPOOL BASE ASS'Y		1	*	
D10		INC. 84-86				
083-1	YA00000682	SPOOL BASE ASS'Y	S	1		
D10		INC. 84-86				
084	YA00000556	SPOOL BASE		1	*	
084-1	YA00000678	SPOOL BASE	S	1		
085	YA00000532	EYELET		2	*	
085-1	YA00001193	EYELET	X	2		
086	YA00000535	NUT		1		
087	YA00000634	GEAR PAD		1	*	
087-1	YA00000466	SPRING	<	1		
088	YA00000510	GEAR CUSHION 1		1		
089	YA00000549	WINDING BASE		1	*	
089-1	YA00000679	WINDING BASE	S	1		
090	YA00000635	NYLON CORD / LINE 5M		1	*	
090-1	YA00000635	NYLON CORD / LINE 5M	O	1		
091	YA00000557	SPOOL COVER		1	*	
091-1	YA00000680	SPOOL COVER	S	1		
092	YA00000636	SHIELD ASSEMBLY		1		
D10		INC. 93-98				
093	YA00000637	PAN HEAD SCREW M6X18 WITH WR		4	*	
093-1	YA00000637	PAN HEAD SCREW M6X18 WITH WR	O	4		
094	YA00000638	PAN HEAD SCREW M5X14		2	*	
094-1	YA00000638	PAN HEAD SCREW M5X14	X	2		
095	YA00000545	SAFETY GUARD		1		
096	YA00000439	BLADE		1		
097	YA00000622	HEX LOCK NUT M5		2		
098	YA00000472	BLADE PROTECTOR		1		
100	YA00000639	STRAP		1		
101	YA00000473	PIN 5X120		1	*	
101-1	YA00000473	PIN 5X120	X	1	*	
102	YA00000438	SPANNER		1	*	
103	YA00000640	T20 PAN HEAD SCREW M5X10		2	*	
103-1	YA00000640	T20 PAN HEAD SCREW M5X10	O	2		
104	YA00000641	T10 HEAD TAPPING SCREW ST3X 10		2	*	
104-1	YA00000641	T10 HEAD TAPPING SCREW ST3X 10	O	2		
105	YA00000656	T20 HEAD TAPPING SCREW ST4.2 X1		12	*	
105-1	YA00000656	T20 HEAD TAPPING SCREW ST4.2 X1	O	12		
106	YA00000660	HOUSING ASSEMBLY BLUE		1		
D10		INC. 3				
107	YA00000561	FAN HOUSING R		1		

108	YA00000514	RUBBER PAD		2			
109	YA00000630	PAN HEAD SCREW M4X12 WITH WR		3			
110	YA00000657	PAN HEAD SCREW M3X6		1	*		
110-1	YA00000657	PAN HEAD SCREW M3X6	0	1			
A01	YA00000438	SPANNER		1			
A02	YA00000473	PIN 5X120		1			

Please state Parts No. when your order.

Print Date 30/01/2024